

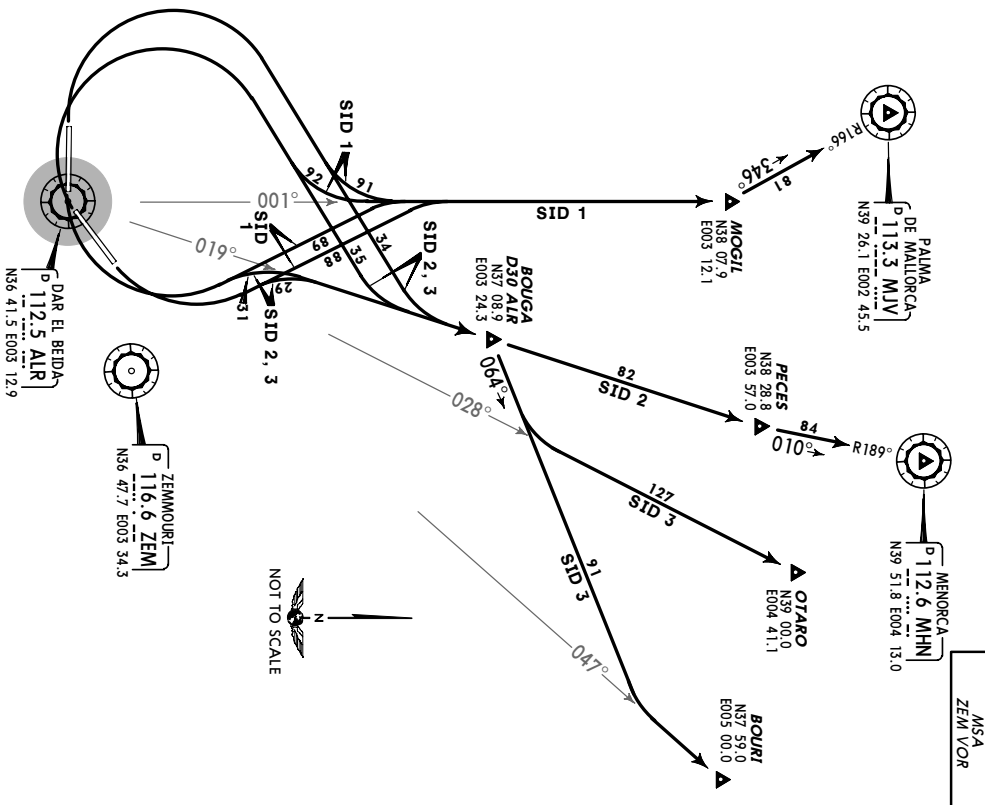
**DAAG/ALG**  
**HOUARI BOUMEDIENE**

8 JUL 05 (10-3)

**ALGIERS, ALGERIA**  
**SID**

Ap/ Elev 82' Trans level: By ATC Trans alt: 3940'

**SID 1, SID 2, SID 3**  
**RWYS 05, 09, 23, 27 DEPARTURES**



SID	RWY	INITIAL CLIMB/ROUTING
SID 1	05, 09	Turn LEFT, intercept ALR R-001 to MOGIL.
SID 2	05, 09	Turn RIGHT, intercept ALR R-001 to MOGIL, then to MJV.
SID 2	23, 27	Turn LEFT, intercept ALR R-019 to PECES, then to MHN.
SID 2	23, 27	Turn RIGHT, intercept ALR R-019 to PECES, then to MHN.
SID 3	05, 09	Turn LEFT, intercept ALR R-019 to D30 ALR, turn RIGHT, 064° track, intercept ALR R-028 to OTARO or ALR R-047 to BOURI.
SID 3	23, 27	Turn RIGHT, intercept ALR R-019 to D30 ALR, turn RIGHT, intercept ALR R-028 to OTARO or ALR R-047 to BOURI.

CHANGES: None. © JEPPESEN SANDERSON, INC., 2003, 2005. ALL RIGHTS RESERVED.

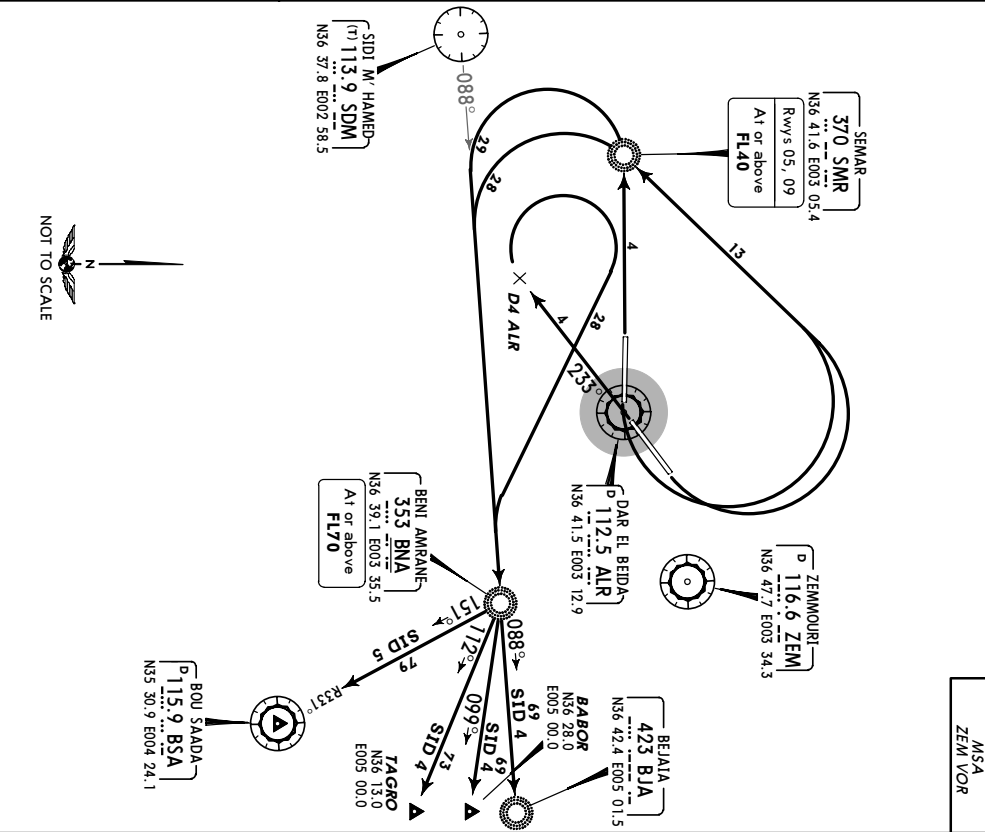
**DAAG/ALG**  
**HOUARI BOUMEDIENE**

8 JUL 05 (10-3A)

**ALGIERS, ALGERIA**  
**SID**

Ap/ Elev 82' Trans level: By ATC Trans alt: 3940'

**SID 4, SID 5**  
**RWYS 05, 09, 23, 27 DEPARTURES**



RWY	INITIAL CLIMB
05, 09	Turn LEFT to SMR, intercept SDM R-088 to BNA.
23	To ALR, ALR R-233 to D4 ALR, turn RIGHT, intercept SDM R-088 to BNA.
27	To SMR, turn LEFT, intercept SDM R-088 to BNA.
SID 4	At BNA to BJA or BABOR or TAGRO.
SID 5	At BNA to BSA.

CHANGES: TAGRO INS coordinates. © JEPPESEN SANDERSON, INC., 2003, 2005. ALL RIGHTS RESERVED.









**DAAG/ALG**  
**HOUARI BOUMEDIENE**  
**ALGIERS, ALGERIA**  
**16 DEC 05 (1-3) CAT II VOR DME ILS Rwy 23**  
**JEPPRESEN**  
**16 DEC 05 (1-3) EFF 22 Dec**  
**ALGIERS Tower**

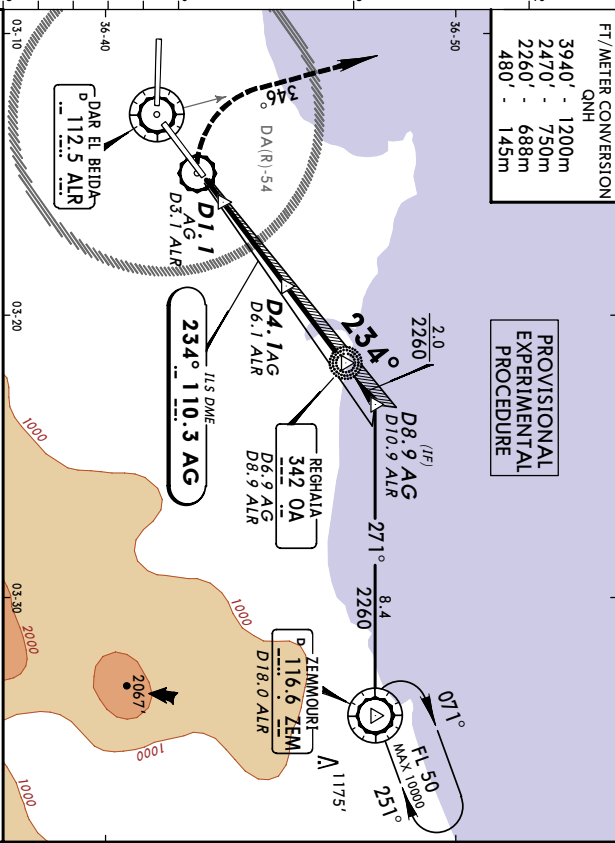
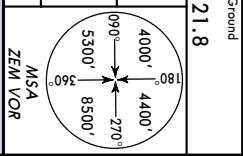
LOC	Final	GS	CAT I/ILS	Appt Elev	82'
AG	Appch Crs	D4.1 AG	RA 103'		
110.3	234°	1378' (1296')	DA(H) 182' (100')	RWY 82'	

**MISSED APCH:** Climb STRAIGHT AHEAD to 480', then turn RIGHT onto R-346 ALR, maintain 2470' and as directed.

Alt Set: MB Rwy Elev: 3 MB Trans level: By ATC Trans alt: 3940'

Special Altcrw & Altcrwt Certification Required.

FT/METER CONVERSION  
 QNH  
 3940' - 1200m  
 2470' - 750m  
 2260' - 688m  
 480' - 145m



Grnd speed-Kts	70	90	100	120	140	160	HAIS-II	480'	2470'	ALR
GS	3.00°	3.77	4.84	5.38	6.46	7.53	PAP			onto 112.5
							PAP			RT
										R-346

RA 103'  
 DA(H) 182' (100')

RVR 350m

RA 103'  
 DA(H) 182' (100')

RVR 350m

STRAIGHT-IN LANDING RWY 23  
 CAT II ILS

PANS OPS 3

CHANGES: New procedure.

© JEPPESEN SANDERSON, INC., 2005. ALL RIGHTS RESERVED.

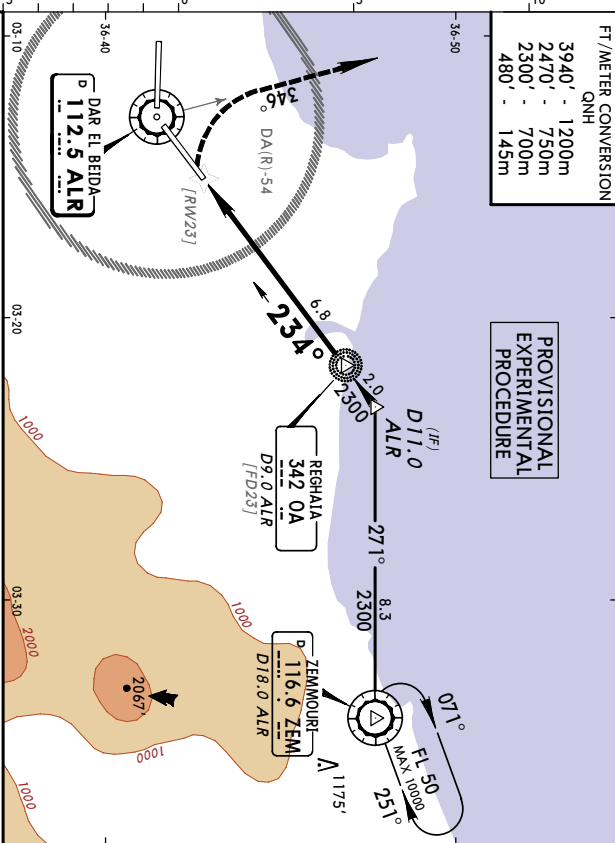
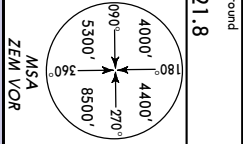
**DAAG/ALG**  
**HOUARI BOUMEDIENE**  
**ALGIERS, ALGERIA**  
**16 DEC 05 (3-1) EFF 22 Dec**  
**ALGIERS Tower**

LOC	Final	Minimum Alt	MDA(H)	Appt Elev	82'
VOR	Appch Crs	Lctr	490' (408')		
112.5	234°	2300' (2218')		RWY 82'	

**MISSED APCH:** Climb STRAIGHT AHEAD to 480', then turn RIGHT onto R-346 ALR, maintain 2470' and as directed.

Alt Set: MB Rwy Elev: 3 MB Trans level: By ATC Trans alt: 3940'

FT/METER CONVERSION  
 QNH  
 3940' - 1200m  
 2470' - 750m  
 2300' - 700m  
 480' - 145m



Grnd speed-Kts	70	90	100	120	140	160	HAIS-II	480'	2470'	ALR
Descent Gradient	5.24%	3.72	4.78	5.31	6.37	7.43	PAP			onto 112.5
Descent angle	3.00°						PAP			RT
Lctr to MAP	6.8	5:50	4:32	4:05	3:24	2:55				R-346

RA 103'  
 DA(H) 182' (100')

RVR 350m

RA 103'  
 DA(H) 182' (100')

RVR 350m

STRAIGHT-IN LANDING RWY 23  
 CAT II ILS

PANS OPS 3

CHANGES: New procedure.

© JEPPESEN SANDERSON, INC., 2005. ALL RIGHTS RESERVED.

**DAAG/ALG**  
**HOUARI BOUMEDIENE**  
**ALGIERS, ALGERIA**  
**VOR DME Rwy 27**

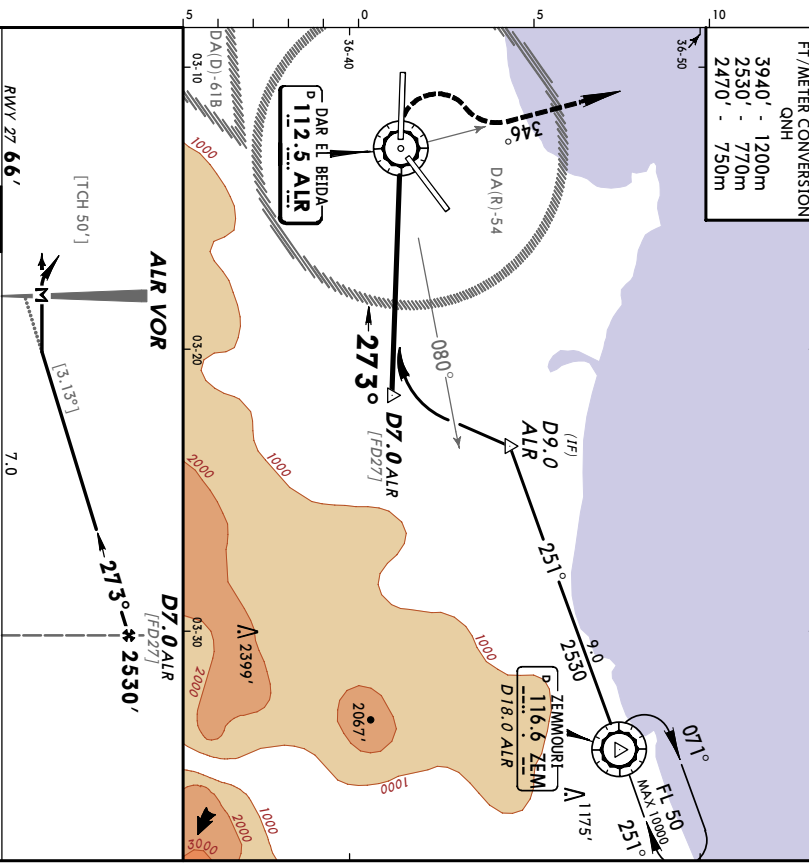
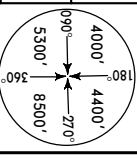
ALGIERS Approach (R)	ALGIERS Tower	Ground
121.4	118.7	121.8

VOR ALR	Final Appch Crs	Minimum Alt	MDA(H)	Appr Elev
112.5	273°	D7.0 ALR 2530' (2464')	520' (454')	Rwy 66'

**MISSED APCH: Climbing turn RIGHT onto R-346 ALR, maintain 2470' and as directed.**

Alt Set: MB Rwy Elev: 2 MB Trans level: By ATC Trans alt: 3940'

FT/METER CONVERSION  
 QNH  
 3940' - 1200m  
 2530' - 770m  
 2470' - 750m



Grd speed-Kts	70	90	100	120	140	160			
Descent Gradient	5.46%	388	498	554	665	775	886		
Descent angle	[3.13°]								
MAP at VOR									

**PANS OPS 3**  
 STRAIGHT-IN LANDING Rwy 27  
 MDA(H) **520' (454')**  
 Not authorized South of airport  
 Max Kts MDA(H)  
 A 2400m 650' (568')  
 B 2800m 850' (768')  
 C 3200m 850' (768')  
 D 205 4000m