

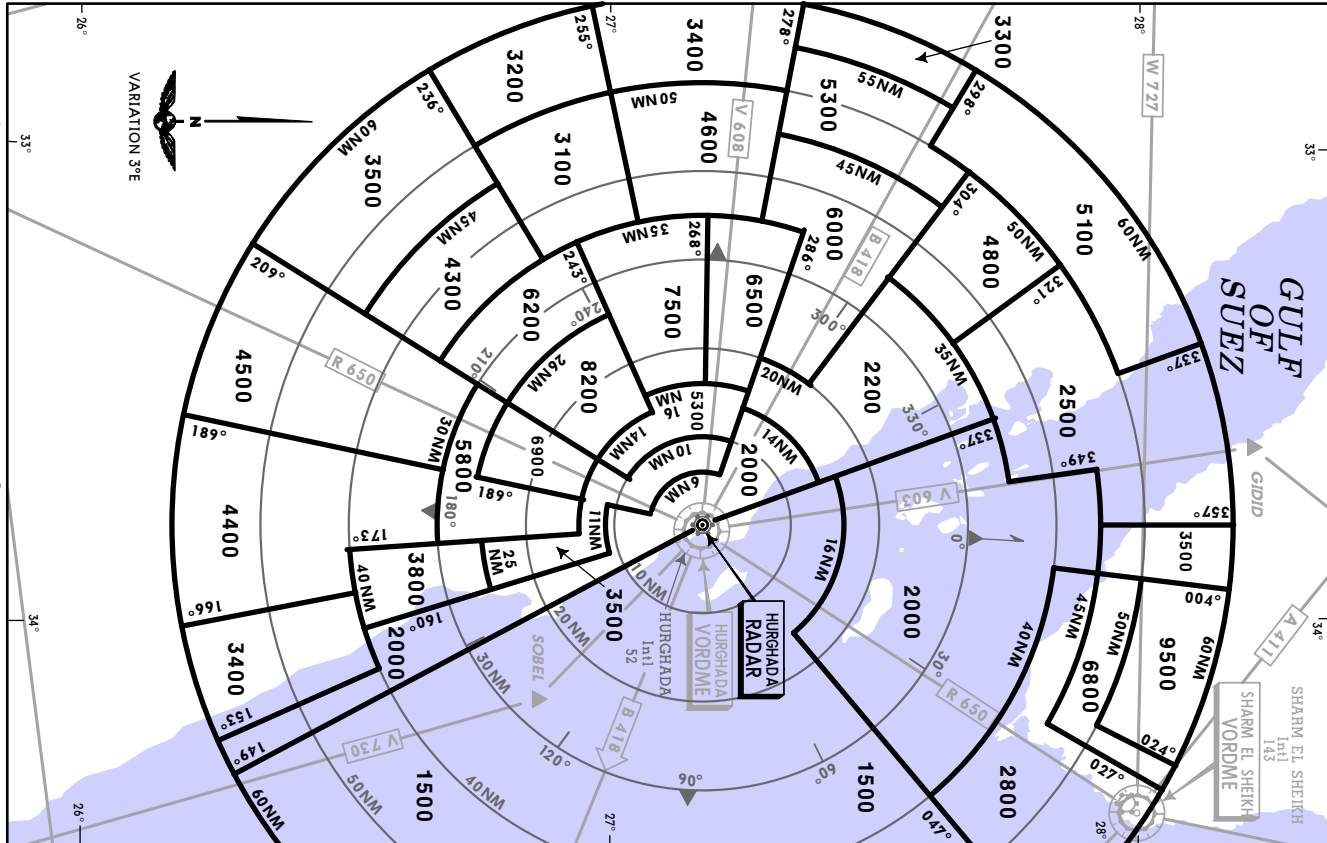
JEPPESSEN

20 DEC 02

(10-1R)

RADAR
HURGHADA, EGYPT

MINIMUM RADAR VECTORING ALTITUDES



CHANGES: New Chart. © JEPPESSEN SANDERSON, INC., 1998, 2001. ALL RIGHTS RESERVED.

HEGN
Apt Elev 52'

HGD 116.5 - On Airport

JEPPESSEN
12 OCT 01
(10-9)

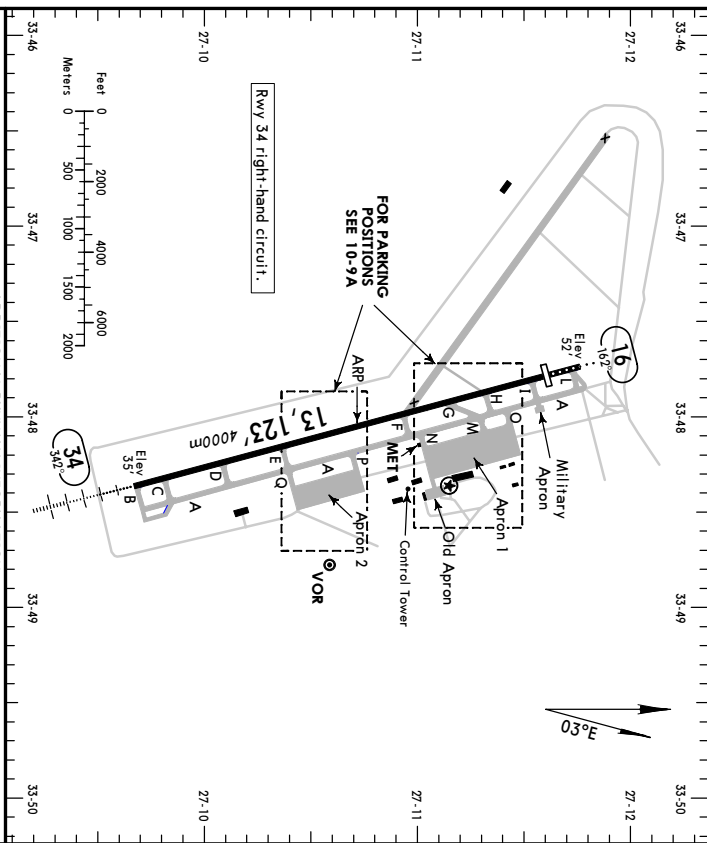
HURGHADA, EGYPT
HURGHADA INTL
N27 10.7 E033 48.1

HURGHADA Ground

121.9

Tower

119.6

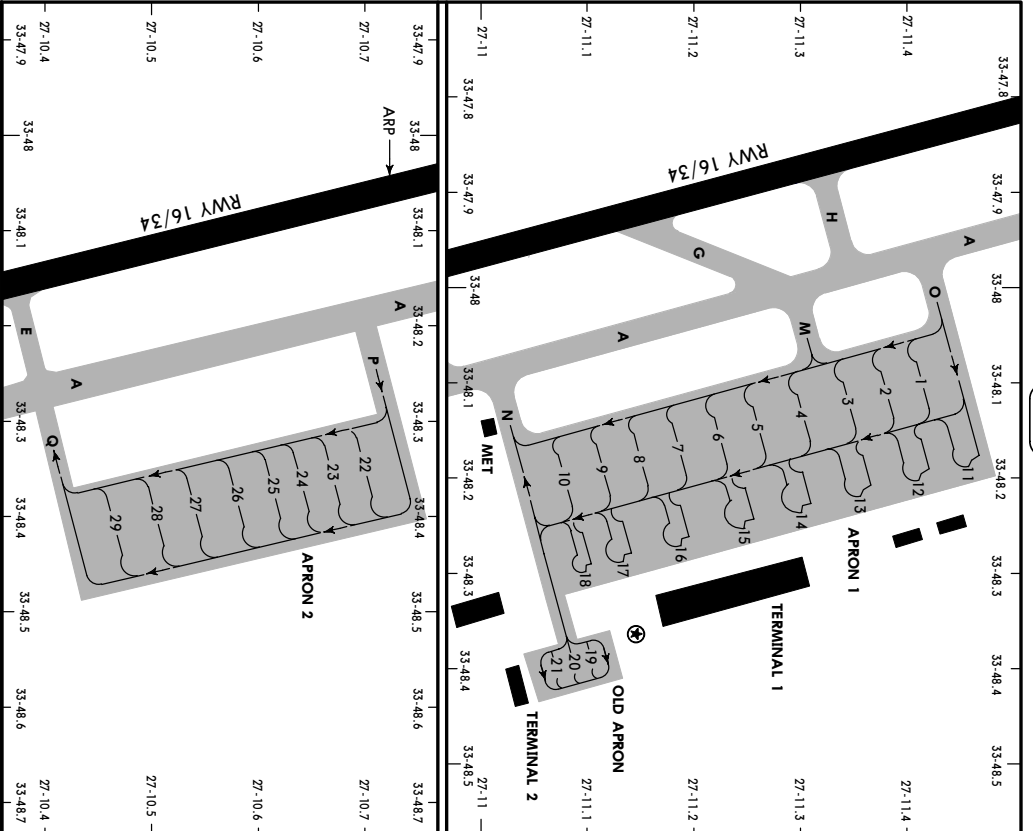


ADDITIONAL RUNWAY INFORMATION

RWY	HIRL (60m)	HIALS	PAPT (angle 3.0°)	USABLE LENGTHS		WIDTH
				LANDING BEYOND Threshold	TAKE-OFF BEYOND Glide Slope	
16				12,139' (3720m)	12,139' (3720m)	148' (45m)
34				12,151' (3704m)	12,139' (3720m)	148' (45m)

	TAKE-OFF	
	AIR CARRIER (JAA)	All Rwys
A	LVP must be in force RCIM (DAY only) or RL	RCIM (DAY only) or RL
B	250m	
C		400m
D	300m	

CHANGES: Rwy 34 elev. Taxiways. Aprons. © JEPPESSEN SANDERSON, INC., 1998, 2001. ALL RIGHTS RESERVED.



INS COORDINATES

STAND No.	COORDINATES	ELEV	STAND No.	COORDINATES	ELEV
1	N27 11.5 E033 48.1	40	12	N27 11.5 E033 48.2	38
2	N27 11.5 E033 48.1	39	13	N27 11.4 E033 48.2	38
3	N27 11.4 E033 48.1	39	14	N27 11.4 E033 48.2	35
4	N27 11.4 E033 48.1	38	15	N27 11.3 E033 48.2	34
5	N27 11.3 E033 48.1	37	16	N27 11.3 E033 48.3	33
6	N27 11.3 E033 48.2	37	17, 18	N27 11.2 E033 48.3	32
7	N27 11.3 E033 48.2	36	19 thru 21	N27 11.2 E033 48.4	29
8	N27 11.3 E033 48.2	35	22, 23	N27 10.8 E033 48.4	34
9	N27 11.2 E033 48.2	35	24, 25	N27 10.7 E033 48.4	34
10	N27 11.2 E033 48.2	34	26	N27 10.7 E033 48.4	31
11	N27 11.5 E033 48.2	39	27 thru 29	N27 10.6 E033 48.4	31

STRAIGHT-IN RWY	A	B	C	D
34 ILS DME	264° (230°) R600m R1000m	276° (242°) R600m R1000m	284° (250°) R600m R1000m	295° (261°) R650m R1200m
ALS out	520° (486°) R1000m	520° (486°) R1200m R1500m	520° (486°) R1200m R2000m	520° (486°) R1600m R2000m
LOC	520° (486°) R1500m	520° (486°) R1500m	520° (486°) R1500m	520° (486°) R2000m
ALS out	520° (486°) R1500m	520° (486°) R1500m	520° (486°) R1500m	520° (486°) R2000m
VOR DME	520° (486°) R1000m R1500m	520° (486°) R1200m R1500m	520° (486°) R1200m R2000m	520° (486°) R1600m R2000m
ALS out	520° (486°) R1500m	520° (486°) R1500m	520° (486°) R2000m	520° (486°) R2000m
CIRCLE-TO-LAND	100 KT	135 KT	180 KT	205 KT
Prohibited west of rwy 16/34	1150° (1098°) V1500m	1150° (1098°) V1500m	1250° (1198°) V2400m	1250° (1198°) V3600m

Take-off RWY 16, 34

LVP must be in Force		NIL (Day only)	
RCLM (Day only) or RL	RCLM (Day only) or RL	NIL (Day only)	
A	250m	400m	500m
B			
C			
D	300m		

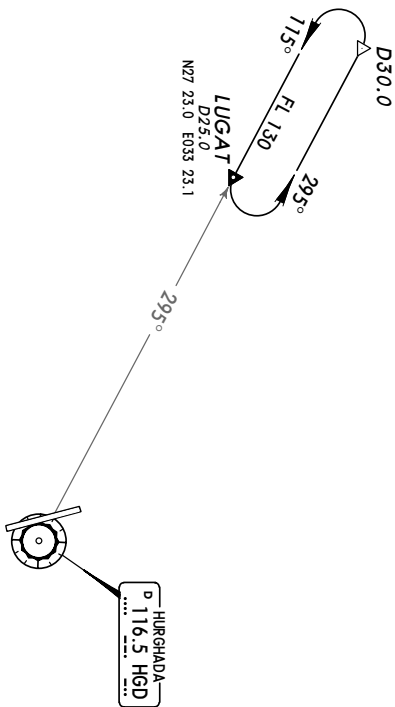
HEGN

JEPPesen
 2 MAR 01 (10-10)

HURGHADA, EGYPT
 HURGHADA INTL

**HURGHADA OUTER FIX
 HOLDING PROCEDURES**

Only to be used, when excessive holdings are expected.
 Vectors to compulsory reporting point LUGAT will be
 provided by ATC.

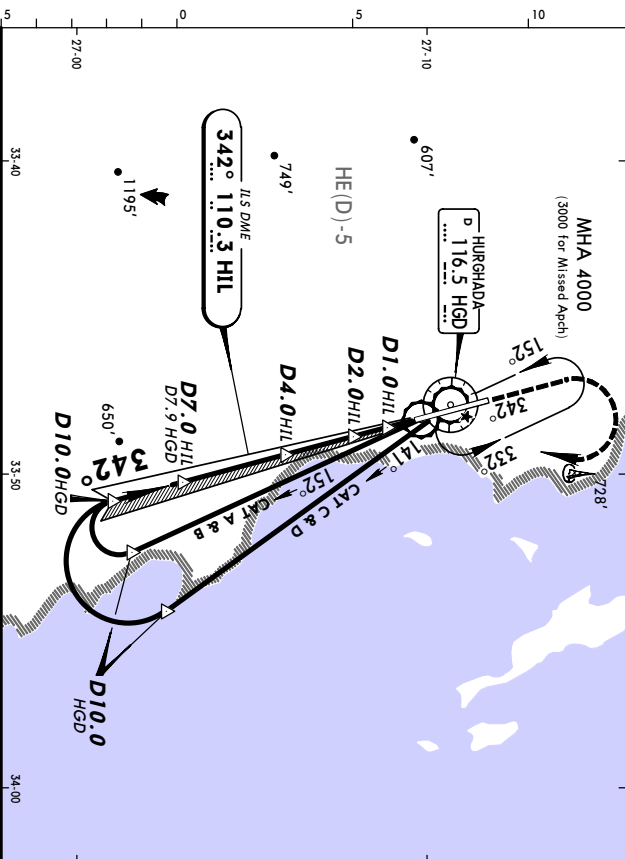


HEGN/HRG

JEPPesen
 21 JAN 05 (11-1)

HURGHADA, EGYPT
 ILS DME Rwy 34

HURGHADA Radar		Approach Control Through Tower		Ground	
LOC	123.4	HURGHADA Tower	119.6	ILS	121.9
HIL	110.3	Final Appch Crs	342°	D4.0 HIL	1308' (1273')
		Refer to Minimums		Rwy to Rwy	35'
<p>MISSED APCH: Climb STRAIGHT AHEAD on track 342° to 2000', then turn RIGHT to reach VOR at 3000' and hold, or as directed.</p>					
Alt. Set:	hPa	Rwy Elev:	1 hPa	Trans level:	FL 110
				Trans alt:	9500'



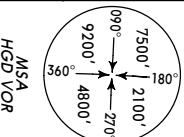
Gnd speed-Kts		70	90	100	120	140	160	HAAS	
ILS GS 3,00° or LOC Descant Gradient 5.2%		377	485	539	647	755	862	PART I PART II	
MAP at D1.0 HIL		STRAIGHT-IN LANDING Rwy 34 LOC (GS out)						CIRCLE-TO-LAND Prohibited West of rwy	
ILS		A: 264' (229') C: 284' (249') D4(H) B: 276' (241') D: 295' (260')						MDA(H) 530' (495')	
FULL		ALS out						ALS out	
Rwy 34 35'		TCH 50'						2000'	
		0.8 1.0 2.0 3.0						1150' (1098')	
								1150' (1098')	
								1250' (1198')	
								4800m	

PANS OPS

A		B		C		D	
800m		1200m		1200m		1600m	
2000m		2000m		2400m		205	

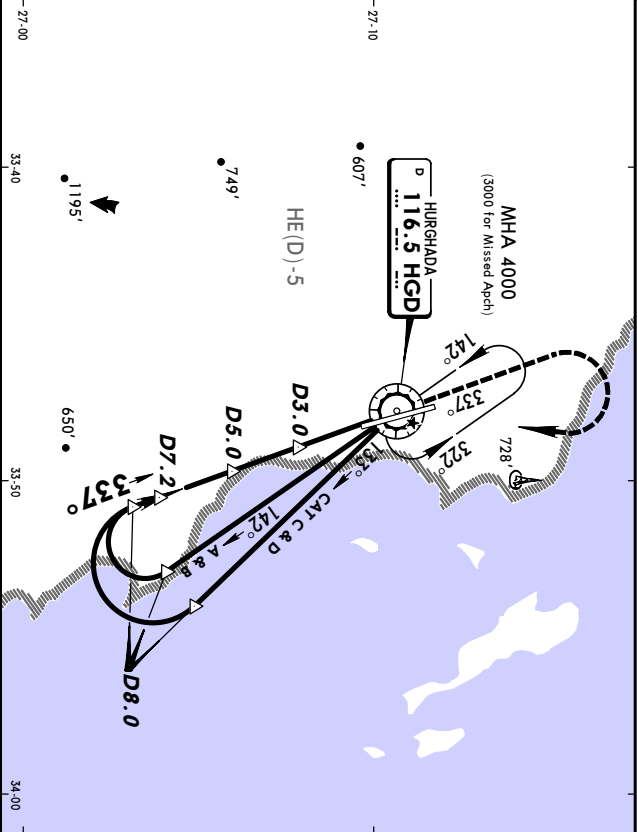
HEGN/HRG **JEPPESSEN** **HURGHADA, EGYPT**
HURGHADA INTL 21 JAN 05 **(3-1)** **VOR DME Rwy 34**

HURGHADA Radar	Approach Control Through Tower	HURGHADA Tower	Ground
VOR 123.4	Final	Minimum Alt	MDA(H)
HGD 116.5	Apch Crs	D7.2	520' (485')
		2400' (2365')	Rwy 35'



MISSED APCH: Climb STRAIGHT AHEAD to 2000', then turn RIGHT to reach VOR at 3000' and hold, or as directed.

Alt Set: MPA Rwy Elev: 1 hPa Trans level: FL 110 MSA HGD VOR Trans alt: 9500'



RWY 34 35'		1.9	2.0	2.2	0.8	
VOR 133°		CAT C & D		D8.0		
4000'		CAT A & B		D5.0		
142°		D3.0		D7.2		
910'		1620'		2400'		
RWY 34 35'		2.0		2.2		

STRAIGHT-IN LANDING RWY 34		CIRCLE-TO-LAND	
MDA(H) 520' (485')		Prohibited West of rwy	
ALS out		Max Alt	
A	800m	100	1150' (1098')
B	1600m	135	1150' (1098')
C	1200m	180	1250' (1198')
D	1600m	205	4800m

Gnd Speed-Kts	70	90	100	120	140	160
Descent Gradient	5.9%	418	538	597	717	856
MAP at VOR						956

HIAS	2000'
PAP1	
PAP2	