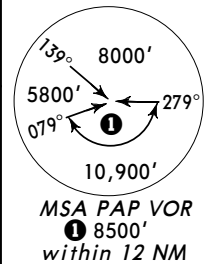
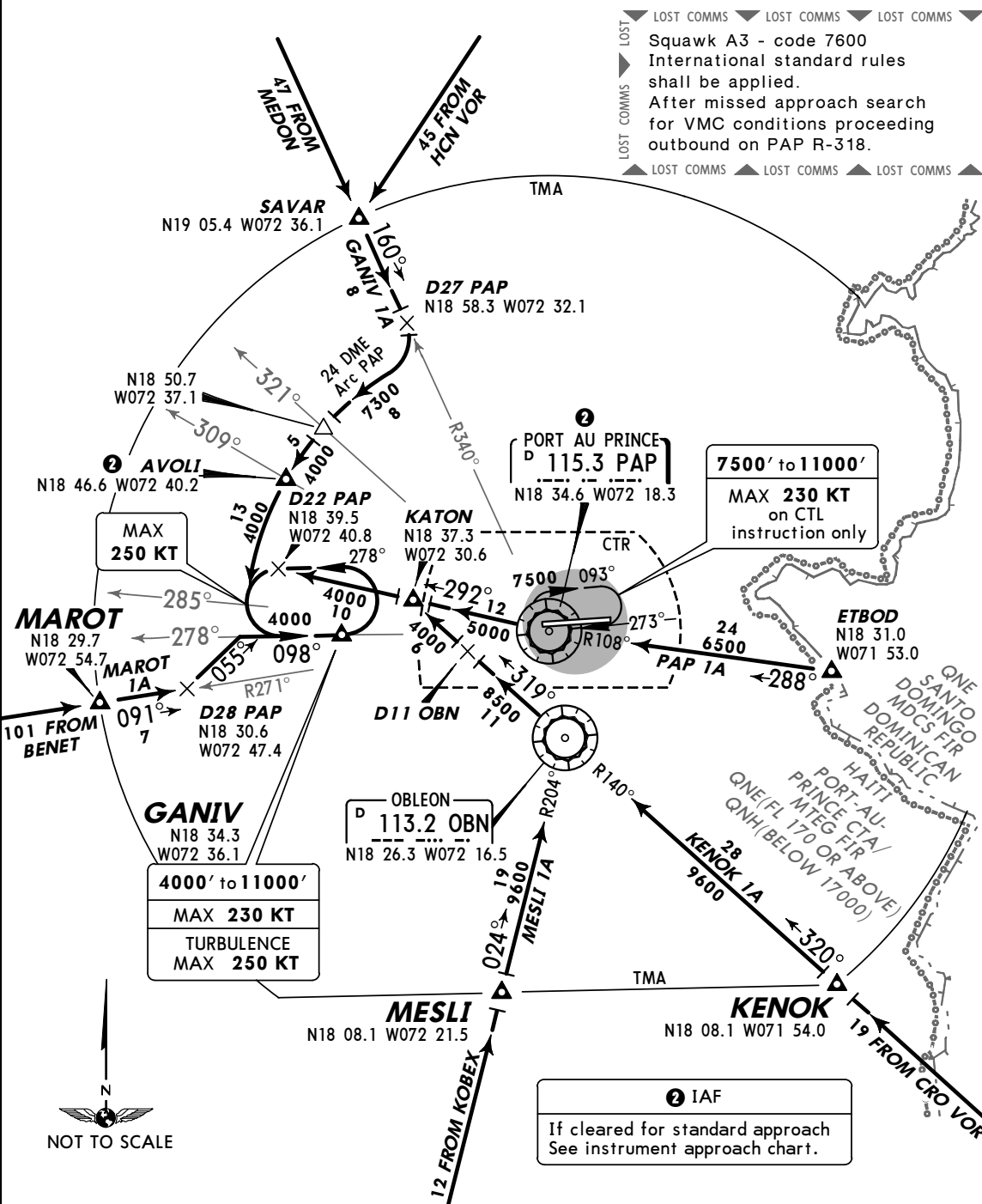


Apt Elev
122'

Alt Set: hPa Trans level: BY ATC Trans alt: 17000'



PORT-AU-PRINCE ARRIVALS

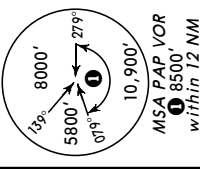


ARRIVALS WITHOUT DISTANCE INFORMATION

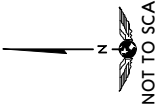
If an operator lacks DME they shall indicate this condition in their flight plan (ITEM 19N) prior to their departure to Port-Au-Prince.
 An operator lacking DME shall advise Port-Au-Prince Approach Control of this condition during their first communication.
 In the event radio communication is lost, aircraft shall proceed from the Terminal Control Area boundary to PAP.

Apt Elev
122'

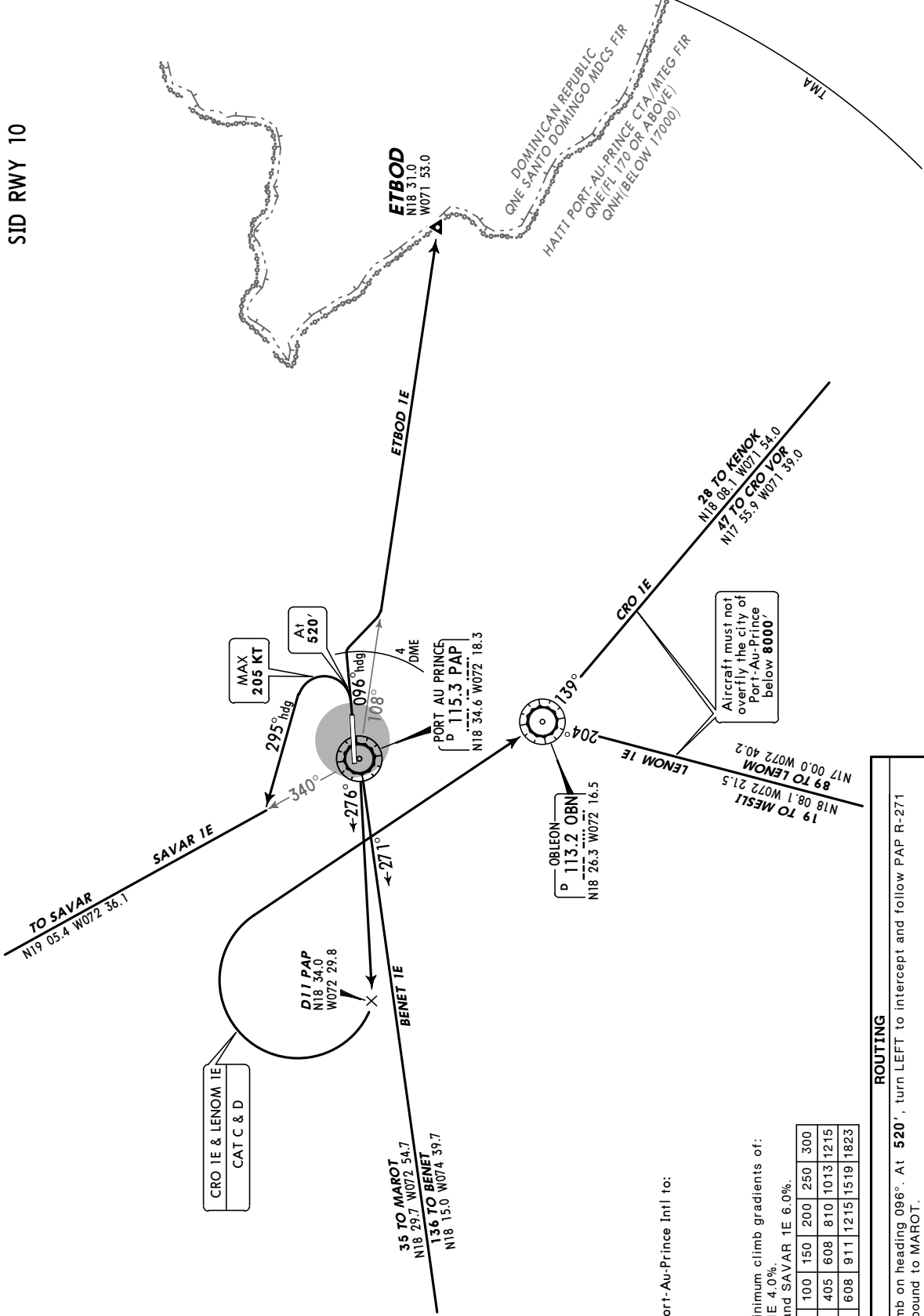
Trans level: By ATC Trans alt: 17000'



MSA PAV VOR
185500'
within 12 NM



SID RWY 10



Direct distance from Port-Au-Prince Intl to:
ETBOD 24 NM
OBN 9 NM
SAVAR 35 NM

These SIDs require minimum climb gradients of:
 BENET IE & ETBOD IE 4.0%.
 CRO IE, LENOM IE, and SAVAR IE 6.0%.

Gnd speed-KT	75	100	150	200	250	300
4.0% V/V (fpm)	304	405	608	810	1013	1215
6.0% V/V (fpm)	456	608	911	1215	1519	1823

SID

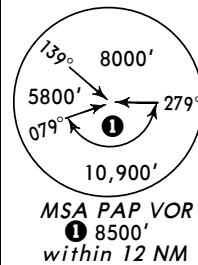
ROUTING

BENET IE	Climb on heading 096°. At 520', turn LEFT to intercept and follow PAP R-271 outbound to MAROT.
CRO IE (CAT C & D only)	Climb on heading 096°. At 520', turn LEFT to intercept and follow PAP R-276. At D11 PAP turn RIGHT inbound to OBN. Follow OBN R-139 outbound to KENOK.
ETBOD IE	Climb on heading 096°. At PAP 4 DME turn RIGHT to intercept and follow PAP R-108 outbound to ETBOD.
LENOM IE (CAT C & D only)	Climb on heading 096°. At 520', turn LEFT to intercept and follow PAP R-276. At D11 PAP turn RIGHT inbound to OBN. Follow OBN R-204 outbound to MESLI.
SAVAR IE	Climb on heading 096°. At 520', turn LEFT heading 295° to intercept and follow PAP R-340 outbound to SAVAR.

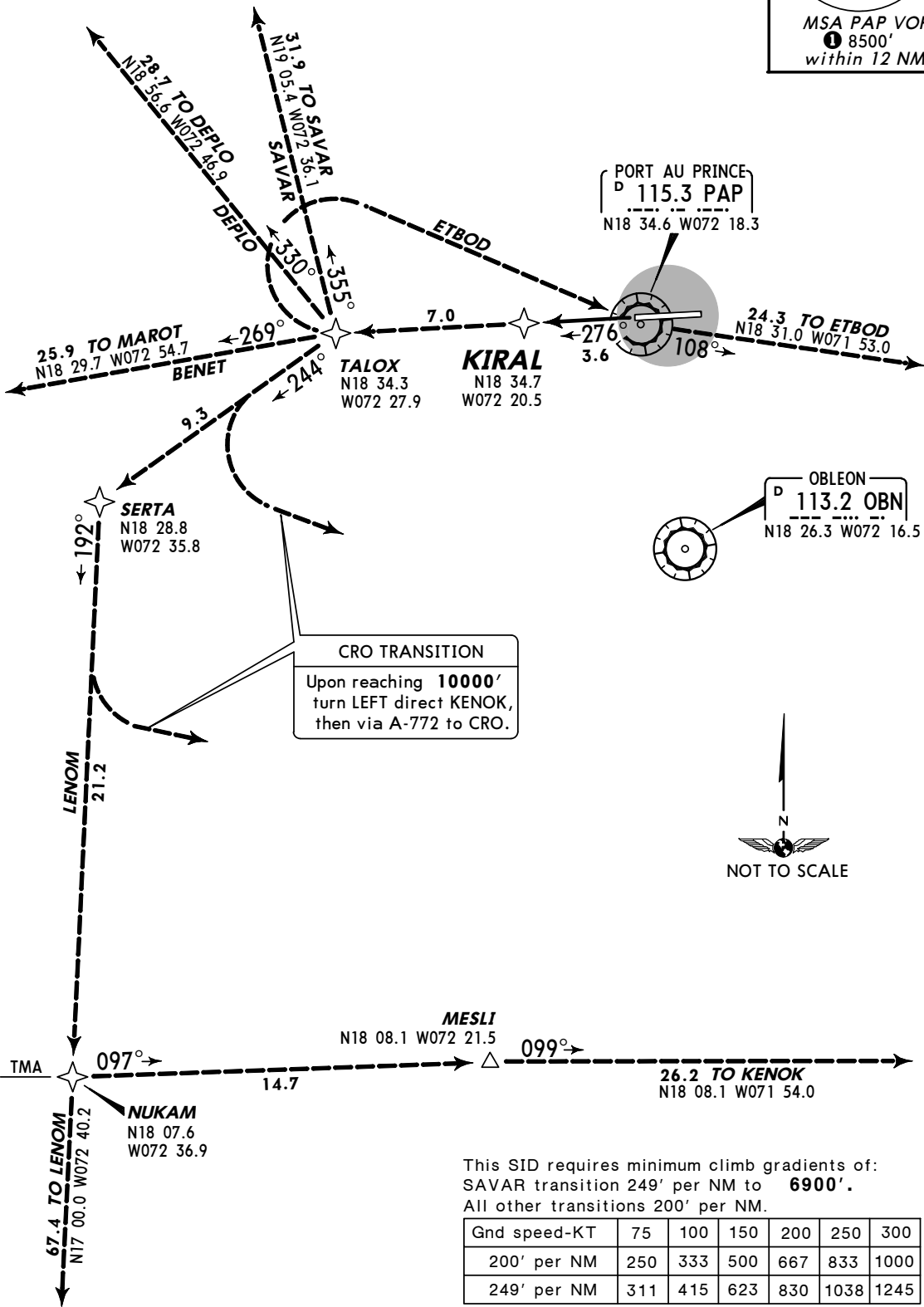
LOST COMMS
 ▼ LOST COMMS ▼ LOST COMMS ▼ LOST COMMS ▼ LOST COMMS ▼ LOST COMMS ▼ LOST COMMS ▼ LOST COMMS ▼ LOST COMMS ▼ LOST COMMS
 VMC: Turn back to Port-Au-Prince and land.
 IMC: MAINTAIN assigned flight level until Terminal Control Area boundary; then apply international standard rules.

Apt Elev
122'

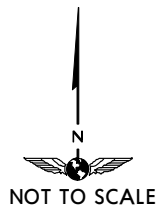
Trans level: BY ATC Trans alt: 17000'
1. For /E, /G and /R aircraft only. CDI will be set to 1 NM.
2. GPS required.



KIRAL ONE RNAV DEPARTURE
(RWY 28)



CRO TRANSITION
Upon reaching 10000' turn LEFT direct KENOK, then via A-772 to CRO.



This SID requires minimum climb gradients of:
SAVAR transition 249' per NM to 6900'.
All other transitions 200' per NM.

Gnd speed-KT	75	100	150	200	250	300
200' per NM	250	333	500	667	833	1000
249' per NM	311	415	623	830	1038	1245

INITIAL CLIMB

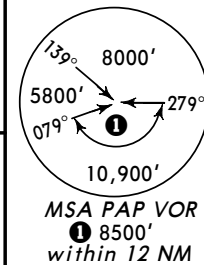
Climb via 276° course to KIRAL.

ROUTING

Via assigned transition.

Apt Elev
122'

- Trans level: BY ATC Trans alt: 17000'
1. For /E, /G and /R aircraft only. CDI will be set to 1 NM.
 2. GPS required.
 3. BENET transition: MAX 220 KT until PAP.
 4. CRO, LENOM, SAVAR transitions: MAX 220 KT until AGNUR.



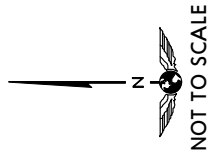
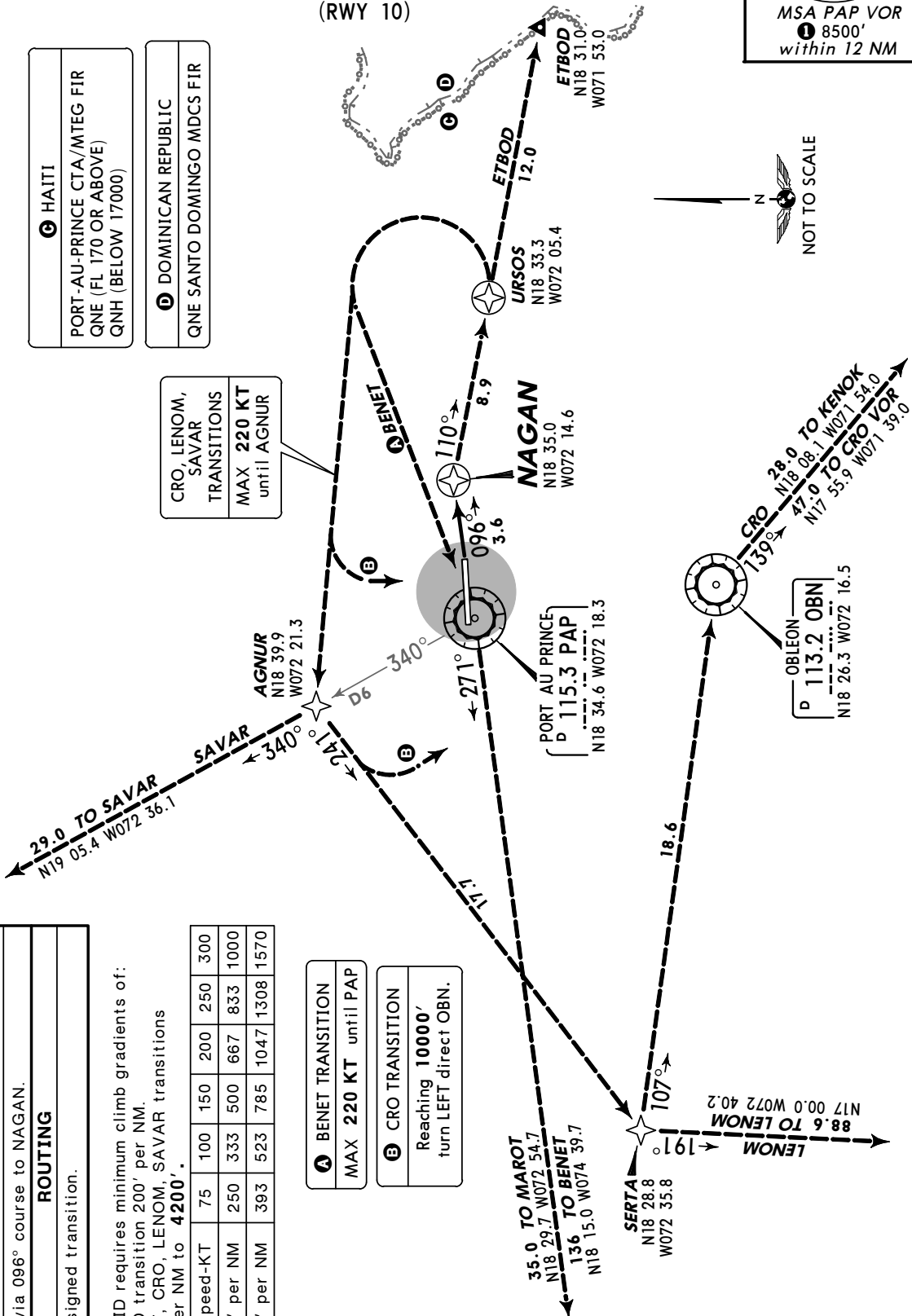
NAGAN ONE RNAV DEPARTURE

(RWY 10)

HAITI
PORT-AU-PRINCE CTA/MITEG FIR
QNE (FL 170 OR ABOVE)
QNH (BELOW 17000)

DOMINICAN REPUBLIC
QNE SANTO DOMINGO MDCS FIR

CRO, LENOM,
SAVAR
TRANSITIONS
MAX 220 KT
until AGNUR



INITIAL CLIMB
Climb via 096° course to NAGAN.

ROUTING
Via assigned transition.

This SID requires minimum climb gradients of:
ETBOD transition 200' per NM.
BENET, CRO, LENOM, SAVAR transitions
314' per NM to 4200'.

Gnd speed-KT	75	100	150	200	250	300
200' per NM	250	333	500	667	833	1000
314' per NM	393	523	785	1047	1308	1570

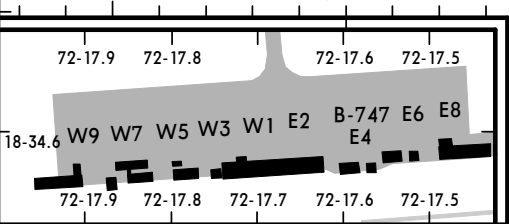
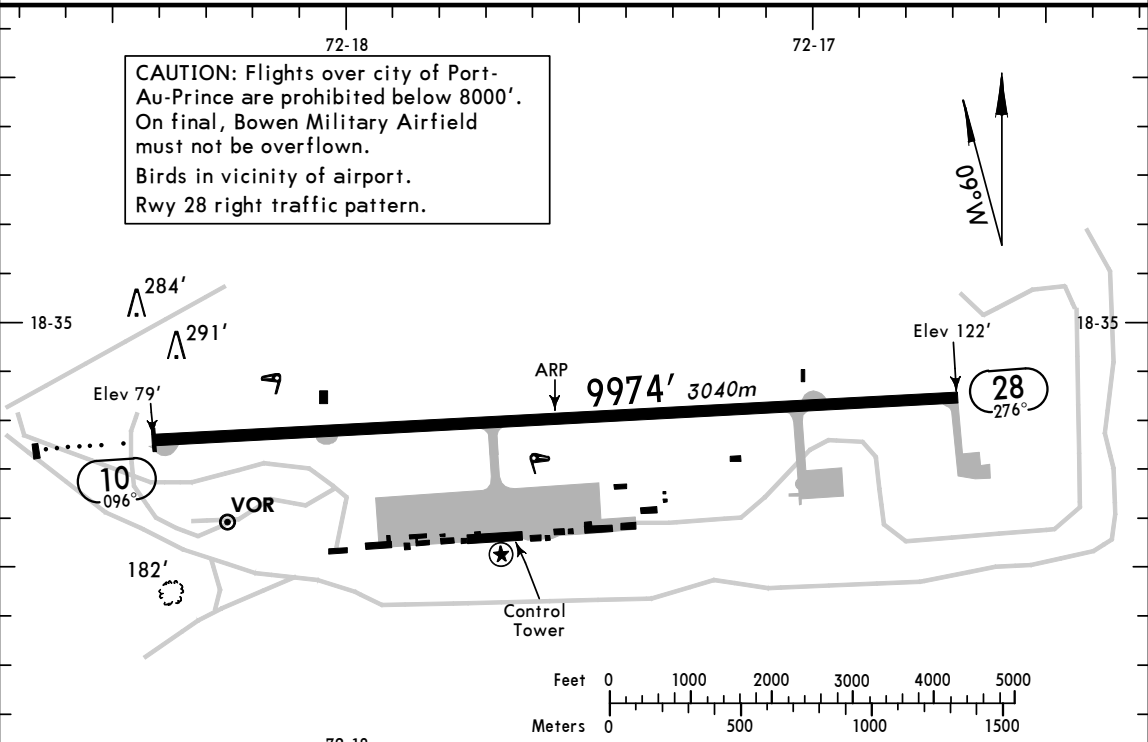
- A BENET TRANSITION**
MAX 220 KT until PAP
- B CRO TRANSITION**
Reaching 10000'
turn LEFT direct OBN.

MTPP/PAP
 Apt Elev **122'**
 N18 34.8 W072 17.6

JEPPESEN PORT-AU-PRINCE, HAITI
 20 MAY 05 **(10-9)**
TOUSSAINT LOUVERTURE INTL

*PORT-AU-PRINCE Tower **118.3**

CAUTION: Flights over city of Port-Au-Prince are prohibited below 8000'.
 On final, Bowen Military Airfield must not be overflown.
 Birds in vicinity of airport.
 Rwy 28 right traffic pattern.



POSITION NO.	COORDINATES
W9	N18 34.6 W072 17.9
W7, W5	N18 34.6 W072 17.8
W3, W1, E2	N18 34.6 W072 17.7
B-747, E4	N18 34.6 W072 17.6
E6, E8	N18 34.6 W072 17.5

ADDITIONAL RUNWAY INFORMATION

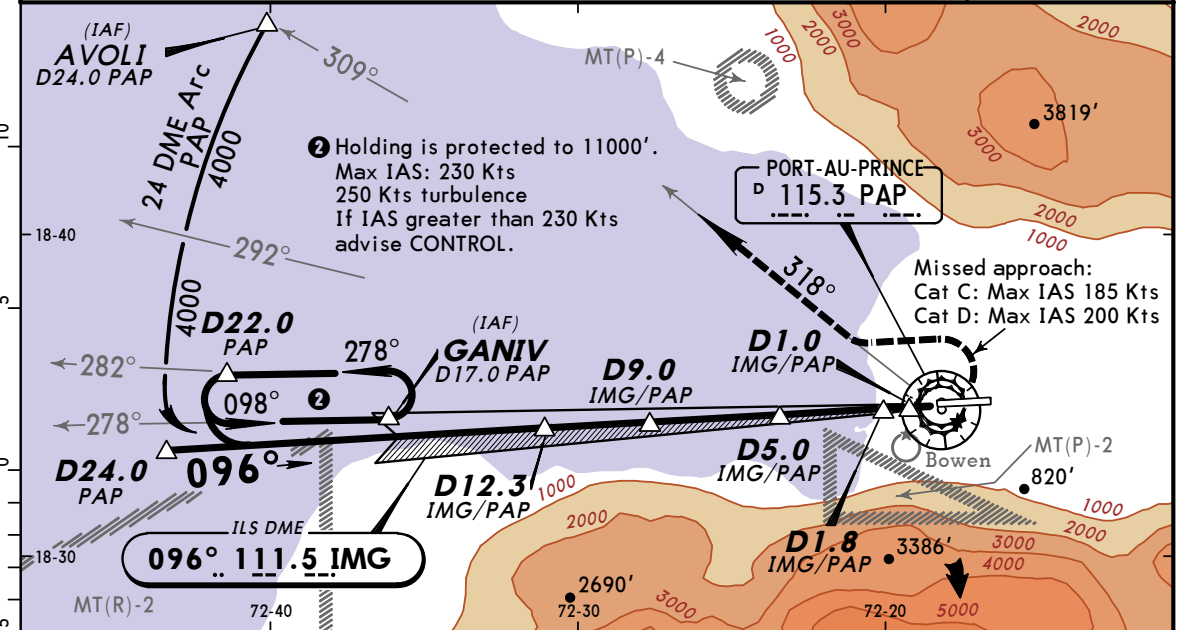
RWY		USABLE LENGTHS		TAKE-OFF	WIDTH
		Threshold	Glide Slope		
10	HIRL HIALS ① PAPI (angle 3.0°)		8848' 2697m		141'
28	HIRL ① PAPI (angle 3.0°)				43m

① On request.

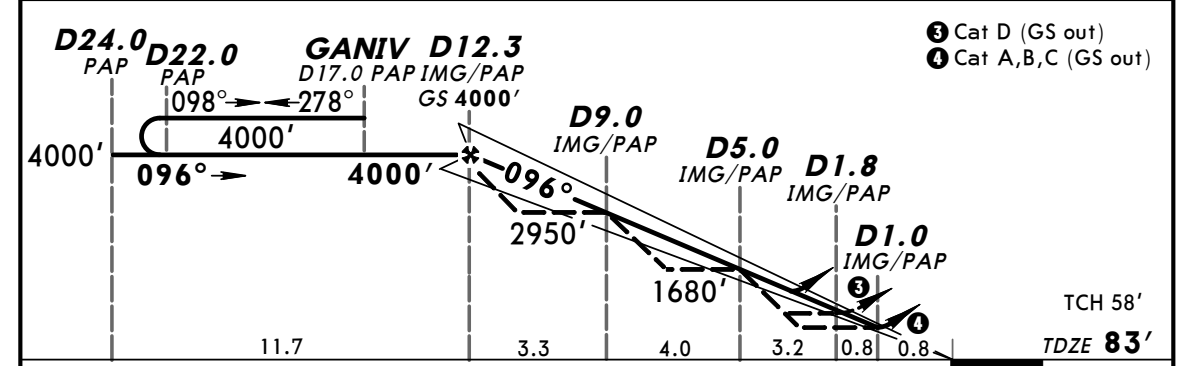
TAKE-OFF				
AIR CARRIER (JAA)		AIR CARRIER (FAR 121)		
LVP must be in Force All Rwys RCLM (DAY only) or RL		All Rwys Adequate Vis ref		
All Rwys RCLM (DAY only) or RL				
A	250m	400m	2 Eng	
B			400m	
C				3 & 4 Eng
D				

MTTP/PAP TOUSSAINT LOUVERTURE INTL

PORT-AU-PRINCE Approach				*PORT-AU-PRINCE Tower			
119.8				118.3			
LOC IMG 111.5	Final Apch Crs 096°	GS D12.3 IMG/PAP 4000' (3917')	DA(H) Refer to Minimums	Apt Elev 122' TDZE 83'			
<p>MISSED APCH: Climbing LEFT turn to 4000' to intercept and track outbound on PAP VOR R-318 (318° heading), then proceed according to CONTROL instructions. Climb to 1570' prior to level acceleration.</p> <p>Alt Set: hPa Rwy Elev: 3 hPa Trans level: By ATC Trans alt: 17000'</p> <p>1. CAUTION: Flights over city of Port-Au-Prince are prohibited below 8000'. 2. IMG ILS DME usable within PAP VOR R-230 to R-320. Within PAP VOR R-230 to R-320 PAP VOR DME is operationally equivalent to IMG ILS DME.</p>							



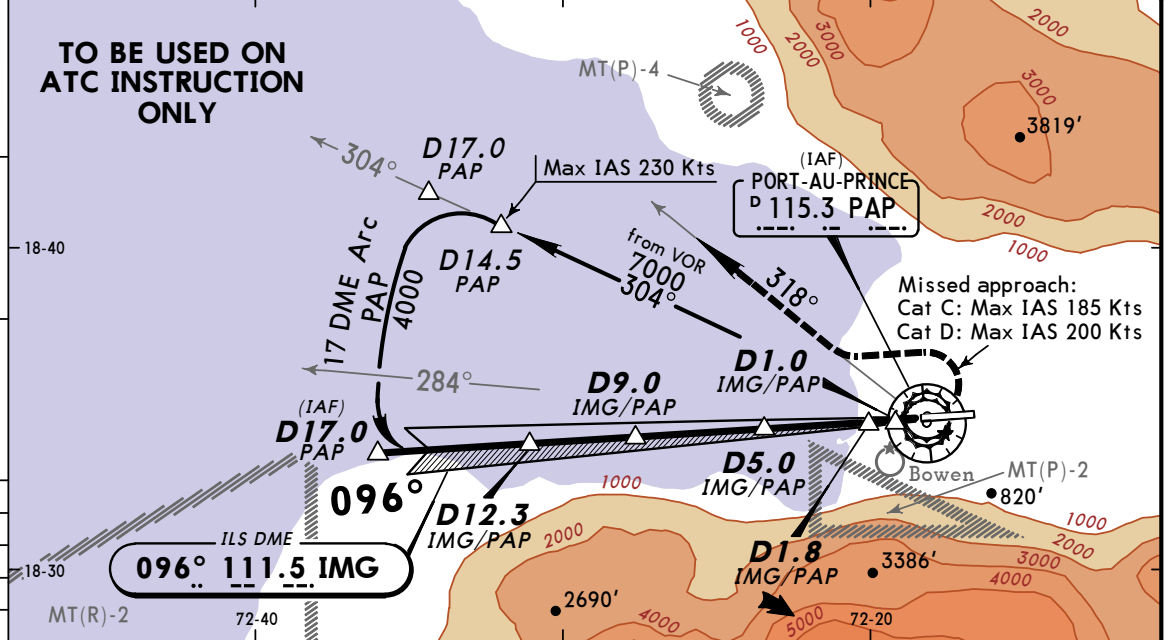
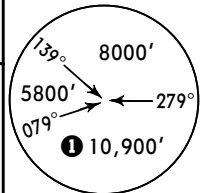
LOC	IMG/PAP DME	12.0	11.0	10.0	9.0	8.0	7.0	6.0	5.0	4.0	3.0	2.0
(GS out)	ALTITUDE	3900'	3580'	3270'	2950'	2630'	2310'	1990'	1680'	1360'	1040'	720'



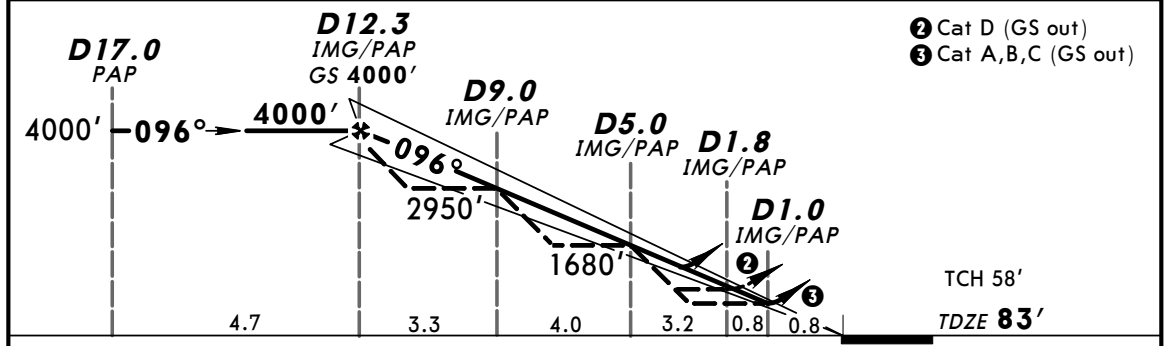
Gnd speed-Kts	70	90	100	120	140	160	PAPI HIALS	4000' ← LT	PAP 115.3 R-318
GS	3.00°	377	484	538	646	861			
Cat A,B,C: MAP at D1.0/Cat D: MAP at D1.8									

STRAIGHT-IN LANDING RWY10						CIRCLE-TO-LAND Not Authorized South of Rwy Centerline		
ILS			LOC (GS out)			Max Kts		
DA(H)		A: 515' (432') C: 535' (452') B: 525' (442') D: 569' (486')		A: 520' (437') C: 540' (457') B: 530' (447') D: 650' (567')				MDA(H)
FULL		ALS out		ALS out		MDA(H)		
A	2.2 km			1.6 km			100	660' (538') -2.2 km
B	2.3 km			2.0 km			135	850' (728') -2.2 km
C	2.5 km			2.8 km			180	950' (828') -2.4 km
D	2.5 km			2.8 km			205	1140' (1018') -3.6 km

PORT-AU-PRINCE Approach 119.8				*PORT-AU-PRINCE Tower 118.3		
LOC IMG 111.5	Final Apch Crs 096°	GS D12.3 IMG/PAP 4000' (3917')	DA(H) Refer to Minimums	Apt Elev 122'	TDZE 83'	
<p>MISSED APCH: Climbing LEFT turn to 4000' to intercept and track outbound on PAP VOR R-318 (318° heading) then proceed according to CONTROL instructions. Climb to 1570' prior to level acceleration.</p>						
<p>Alt Set: hPa Rwy Elev: 3 hPa Trans level: By ATC Trans alt: 17000'</p> <p>1. CAUTION: Flights over city of Port-Au-Prince are prohibited below 8000'. 2. CAUTION: GANIV holding pattern not be used. 3. IMG ILS DME usable within PAP VOR R-230 to R-320. Within PAP VOR R-230 to R-320 distance PAP VOR DME is operationally equivalent to IMG ILS DME.</p>						



LOC	IMG/PAP DME	12.0	11.0	10.0	9.0	8.0	7.0	6.0	5.0	4.0	3.0	2.0
(GS out)	ALTITUDE	3900'	3580'	3270'	2950'	2630'	2310'	1990'	1680'	1360'	1040'	720'



Gnd speed-Kts	70	90	100	120	140	160	PAPI HIALS	4000'	PAP 115.3 R-318
GS	3.00°	377	484	538	646	861			
Cat A,B,C: MAP at D1.0/Cat D: MAP at D1.8								LT	TDZE 83'

STRAIGHT-IN LANDING RWY10				CIRCLE-TO-LAND	
ILS		LOC (GS out)		Not Authorized South of Rwy Centerline	
DA(H)	A: 515' (432') B: 525' (442')	C: 535' (452') D: 569' (486')	MDA(H)	A: 520' (437') B: 530' (447')	C: 540' (457') D: 650' (567')
	FULL	ALS out		ALS out	
A	2.2 km		1.6 km		Max Kts
B	2.3 km		2.0 km		100
C	2.5 km		2.8 km		135
D	2.5 km		2.8 km		180
					205
					MDA(H)
					660' (538') -2.2 km
					850' (728') -2.2 km
					950' (828') -2.4 km
					1140' (1018') -3.6 km

MTPP/PAP

TOUSSAINT LOUVERTURE INTL

29 JUL 05 (12-1)

JEPPesen PORT-AU-PRINCE, HAITI
RNAV (GPS) Rwy 10

PORT-AU-PRINCE Approach
119.8

*PORT-AU-PRINCE Tower
118.3

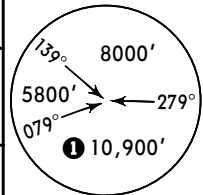
RNAV

Final
Apch Crs
096°

Minimum Alt
TALOX
3000' (2917')

LNAV/VNAV
DA(H)
460' (377')

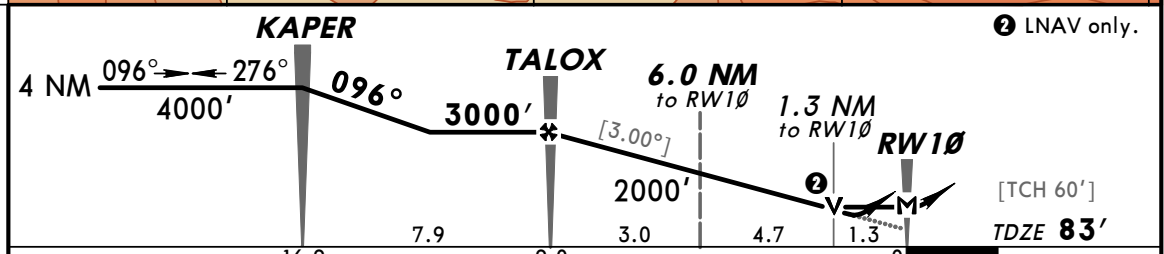
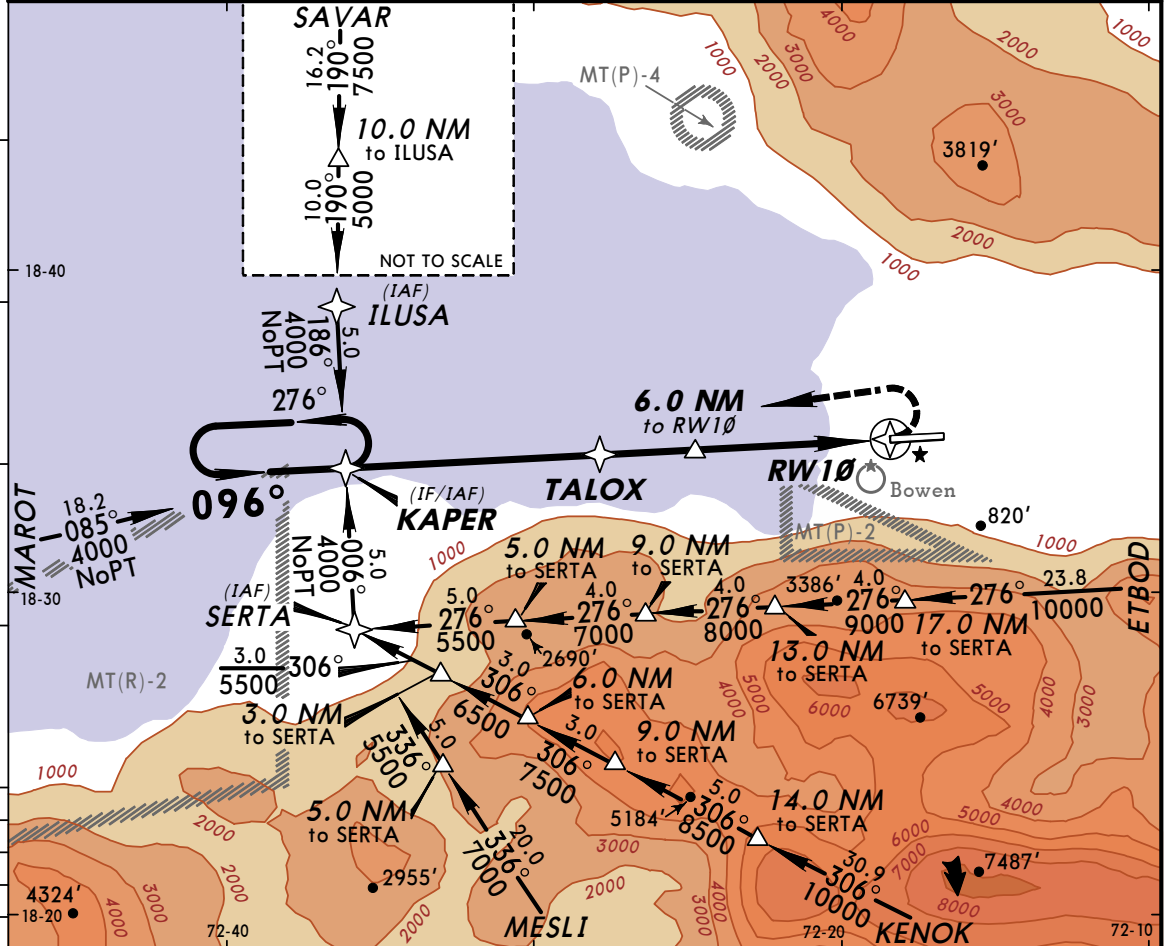
Apt Elev **122'**
TDZE **83'**



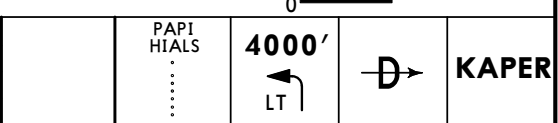
MISSED APCH: Climbing LEFT turn to 4000' direct KAPER and hold, or as directed by ATC.

- Alt Set: hPa TDZ Elev: 3 hPa Trans level: By ATC Trans alt: 17000'
- CAUTION: Flights over the city of Port-Au-Prince are prohibited below 8000'.
 - GPS required.

MSA RW10
1 8500'
within 12 NM



Gnd speed-Kts	70	90	100	120	140	160
Descent angle [3.00°]	372	478	531	637	743	849
MAP at RWY10						



PANS OPS	STRAIGHT-IN LANDING RWY10		Max Kts	MDA(H)
	LNAV/VNAV DA(H) 460' (377')	LNAV MDA(H) 560' (477')		
A	ALS out	ALS out	100	600' (478') - 1.6 km
B	1.6 km	1.6 km	135	640' (518') - 1.6 km
C	2.0 km	2.0 km	180	640' (518') - 2.4 km
D	2.0 km	2.4 km	205	680' (558') - 3.6 km

CHANGES: None.

MTPP/PAP

TOUSSAINT LOUVERTURE INTL

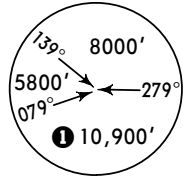
29 JUL 05 (12-2)

JEPPESEN PORT-AU-PRINCE, HAITI RNAV (GPS) Rwy 28

PORT-AU-PRINCE Approach
119.8

*PORT-AU-PRINCE Tower
118.3

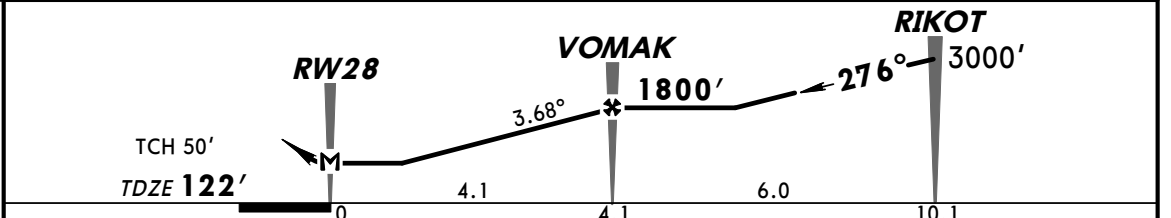
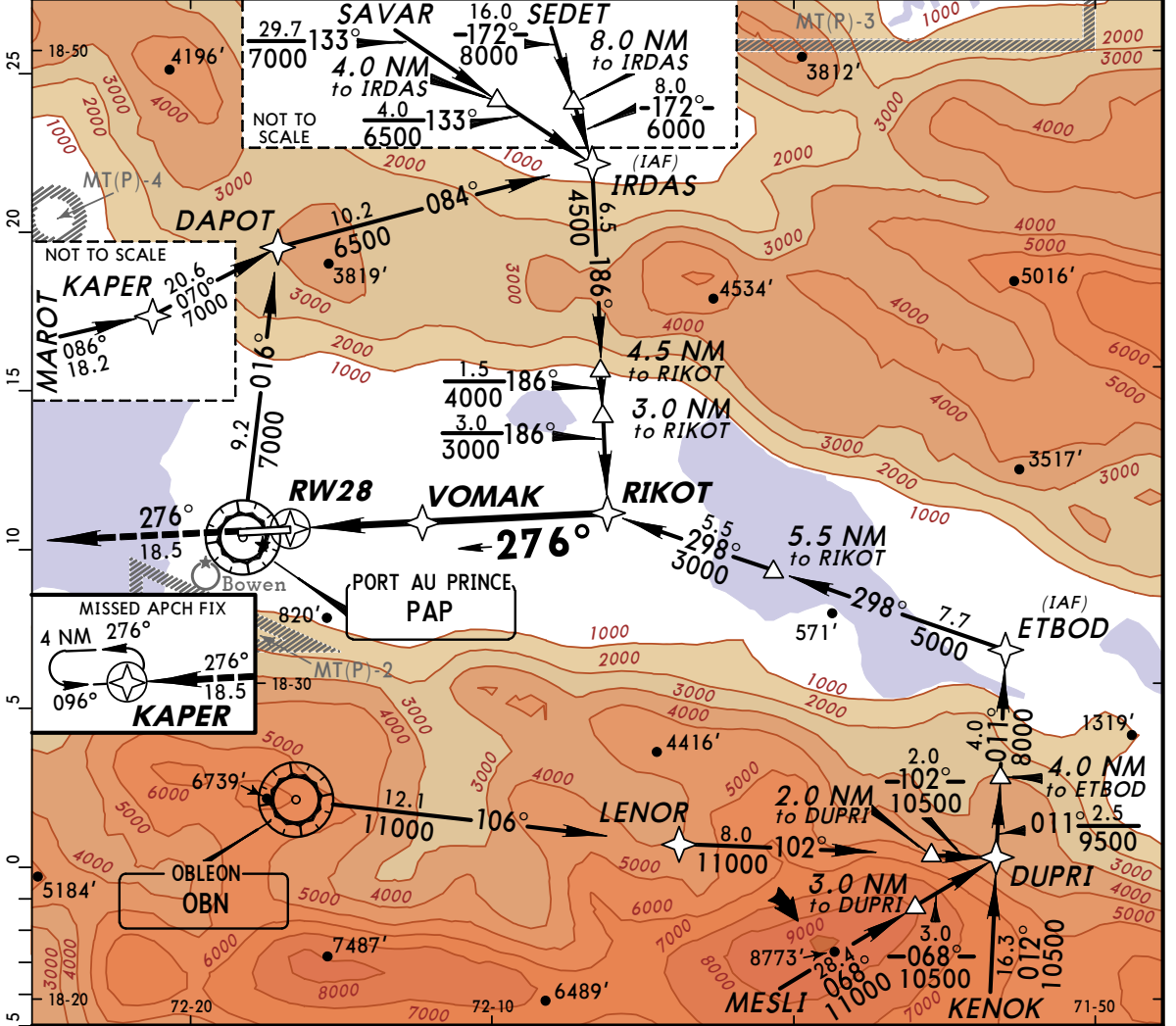
RNAV	Final Apch Crs 276°	Minimum Alt VOMAK 1800' (1678')	LNAV MDA(H) 620' (498')	Apt Elev 122' TDZE 122'
------	----------------------------------	---	--------------------------------------	--



MISSED APCH: Climb to 4000' direct KAPER and hold, or as directed by ATC.

Alt Set: hPa TDZ Elev: 3 hPa Trans level: By ATC Trans alt: 17000'
1. CAUTION: Flights over the city of Port-Au-Prince are prohibited below 8000' except as charted. 2. GPS required.

MSA RW28
1 8500'
within 12 NM



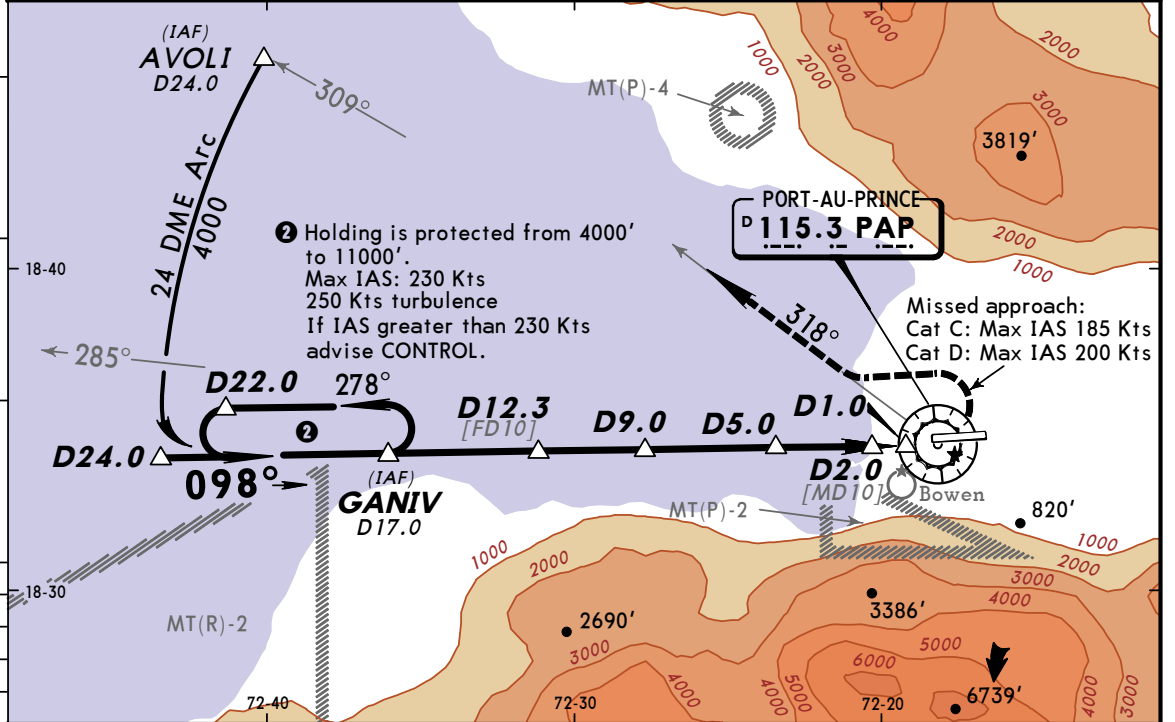
Gnd speed-Kts	70	90	100	120	140	160	PAPI	4000'	D	KAPER
Descent angle	3.68°	456	586	651	782	912				
MAP at RW28										

PANS OPS	STRAIGHT-IN LANDING RWY28		CIRCLE-TO-LAND	
	LNAV	MDA(H)	Max Kts	MDA(H)
A		620' (498')	100	620' (498') - 1.6 km
B	1.6 km		135	620' (498') - 2.4 km
C	2.0 km		180	620' (498') - 3.6 km
D	2.4 km		205	680' (558') - 3.6 km

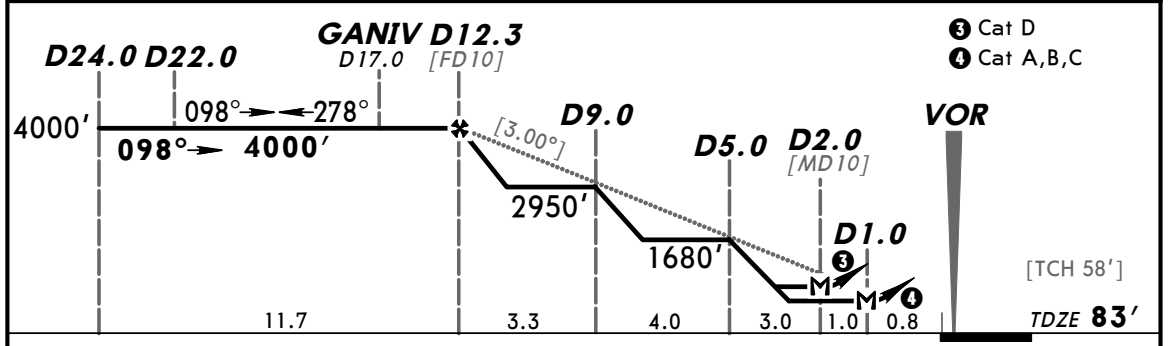
CHANGES: Descent angle.

© JEPPESEN SANDERSON, INC., 2005. ALL RIGHTS RESERVED.

PORT-AU-PRINCE Approach				*PORT-AU-PRINCE Tower	
119.8				118.3	
VOR PAP 115.3	Final Apch Crs 098°	Minimum Alt D12.3 4000' (3917')	MDA(H) Refer to Minimums	Apt Elev 122'	TDZE 83'
MISSED APCH: Climbing LEFT turn to 4000' to intercept and track outbound on PAP VOR R-318 (318° heading) then proceed according to CONTROL instructions. Climb to 1670' prior to level acceleration.					
Alt Set: hPa Rwy Elev: 3 hPa Trans level: By ATC Trans alt: 17000'					MSA PAP VOR 10,900' 8500' within 12 NM
1. CAUTION: Flights over city of Port-Au-Prince are prohibited below 8000'.					



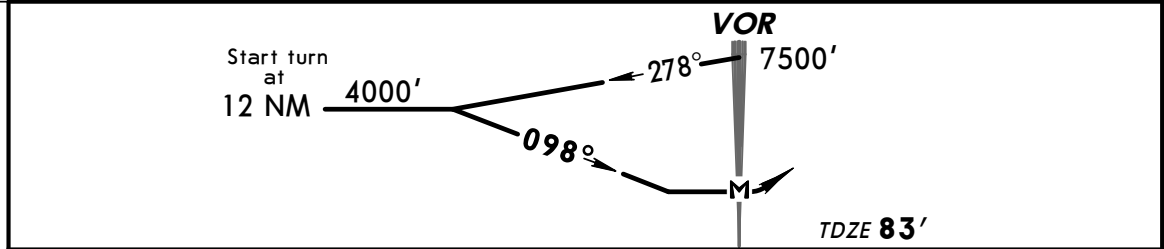
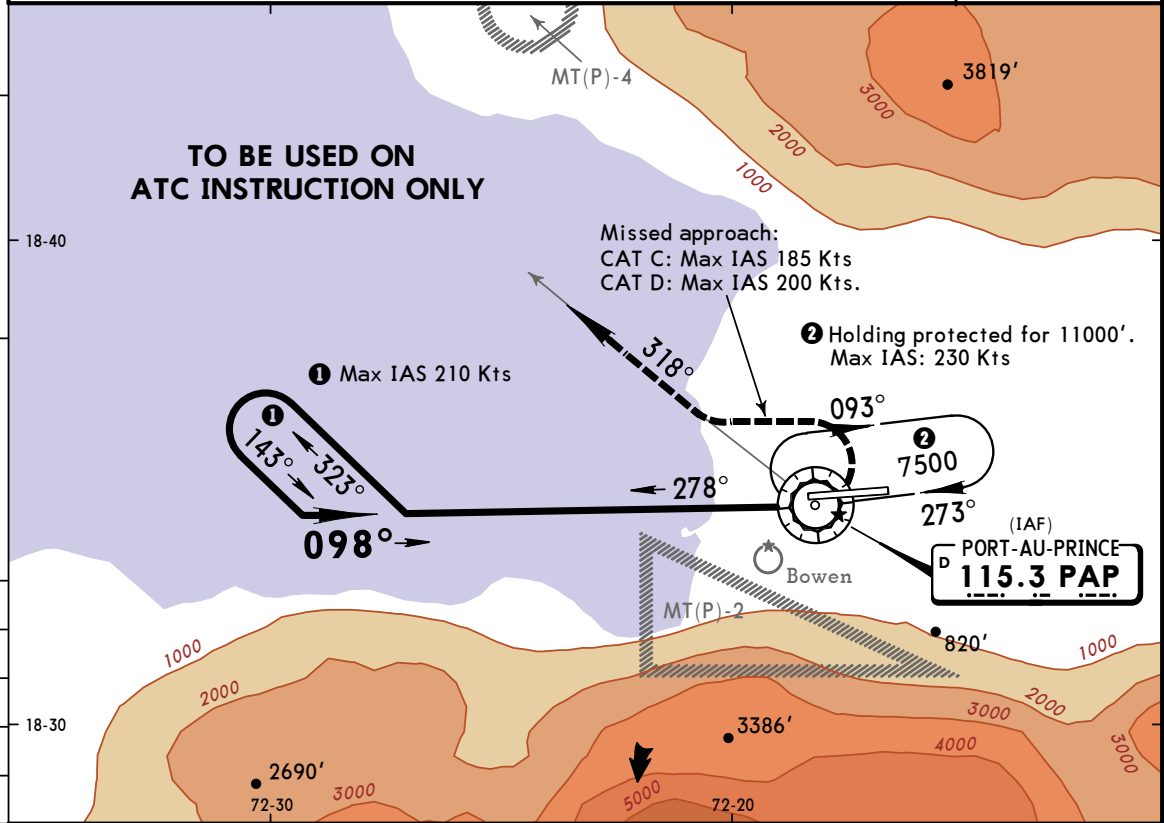
PAP DME	12.0	11.0	10.0	9.0	8.0	7.0	6.0	5.0	4.0	3.0	2.0
ALTITUDE	3900'	3580'	3270'	2950'	2630'	2310'	1990'	1680'	1360'	1040'	720'



Gnd speed-Kts	70	90	100	120	140	160	PAPI HIALS	4000'	PAP 115.3 R-318
Descent angle [3.00°]	372	478	531	637	743	849			
Cat A,B,C: MAP at D1.0/Cat D: MAP at D2.0								LT	

STRAIGHT-IN LANDING RWY 10				CIRCLE-TO-LAND			
MDA(H) A: 520' (437') C: 540' (457') B: 530' (447') D: 720' (637')				Not Authorized South of Rwy Centerline			
	ALS out			Max Kts	MDA(H)		
A	1.6 km			100	660' (538') - 1.6 km		
B				135	850' (728') - 1.6 km		
C	2.0 km			180	950' (828') - 2.4 km		
D	3.2 km			205	1140' (1018') - 3.6 km		

PORT-AU-PRINCE Approach			*PORT-AU-PRINCE Tower		
119.8			118.3		
VOR PAP 115.3	Final Apch Crs 098°	No FAF	MDA(H) Refer to Minimums	Apt Elev 122'	TDZE 83'
MISSED APCH: Climbing LEFT turn to 7500' to intercept and track outbound on PAP VOR R-318 (318° heading) then proceed according to CONTROL instructions. Climb to 1530' (Cat B & C) or 2320' (Cat D) prior to level acceleration.					
Alt Set: hPa Rwy Elev: 3 hPa Trans level: By ATC Trans alt: 17000' 1. CAUTION: Flights over city of Port-Au-Prince are prohibited below 8000'. Final descent below 4000' only when established on PAP VOR R-278 (098° inbound).					MSA PAP VOR 1 8500' within 12 NM



				PAP HIALS	7500'	PAP 115.3
				...	LT	R-318
MAP at VOR						

STRAIGHT-IN LANDING RWY10			CIRCLE-TO-LAND		
MDA(H) A,B,C: 780' (697')			Not Authorized South of Runway Centerline		
D: 1290' (1207')					
ALS out			Max Kts	MDA(H)	
A	1.6 km		100	780' (658') - 1.6 km	
B	3.2 km		135	850' (728') - 1.6 km	
C	4.8 km		180	950' (828') - 3.2 km	
D			205	1290' (1168') - 4.8 km	