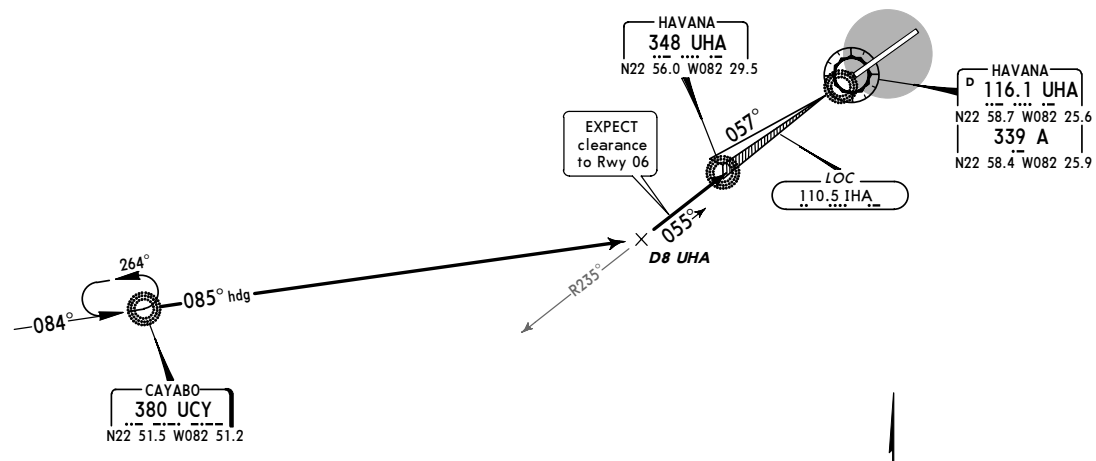
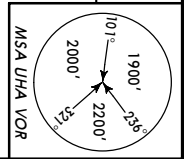


**MUHA/HAV**  
**JOSE MARTI INTL**  
 16 JUL 04 **10-2**  
**JEPPesen**  
**HAVANA, CUBA**  
**STAR**

*ATIS <b>132.5</b>	Apt Elev <b>210'</b>	Alt set: hPa Trans level: By ATC Max 210 KT within 25 NM of UHA at or below FL 100 unless otherwise cleared by ATC.	Trans alt: 3000'
-----------------------	-------------------------	--	------------------

**CAYABO 5 ARRIVAL**  
 (RWY 06)



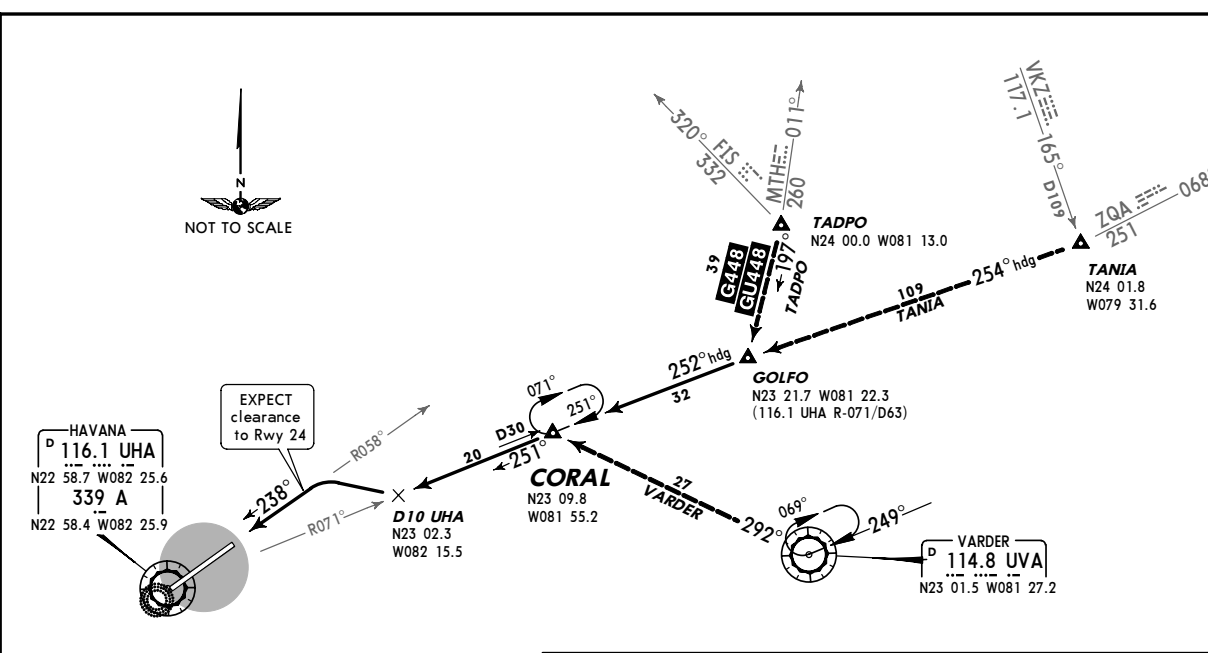
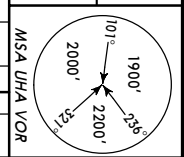
**ROUTING**

From UCY NDB proceed on 085° heading to intercept localizer course or UHA R-235 to UHA VOR and EXPECT Rwy 06 clearance.

**MUHA/HAV**  
**JOSE MARTI INTL**  
 16 JUL 04 **10-2A**  
**JEPPesen**  
**HAVANA, CUBA**  
**STAR**

*ATIS <b>132.5</b>	Apt Elev <b>210'</b>	Alt set: hPa Trans level: By ATC Max 210 KT within 25 NM of UHA at or below FL 100 unless otherwise cleared by ATC.	Trans alt: 3000'
-----------------------	-------------------------	--	------------------

**CORAL 4 ARRIVAL**  
 (RWY 24)



**TRANSITIONS**

<b>TADPO</b>	From TADPO via G/GU448 to GOLFO and continue on 252° heading direct to CORAL.
<b>TANIA</b>	From TANIA on 254° heading to GOLFO and continue on 252° heading to CORAL.
<b>VARDER</b>	From UVA VOR via R-292 direct to CORAL.

**ROUTING**

From CORAL via UHA R-071 to UHA VOR, at D10 UHA turn RIGHT and intercept UHA R-058 to UHA VOR and EXPECT Rwy 24 clearance.

MUHA/HAV  
JOSE MARTI INTL

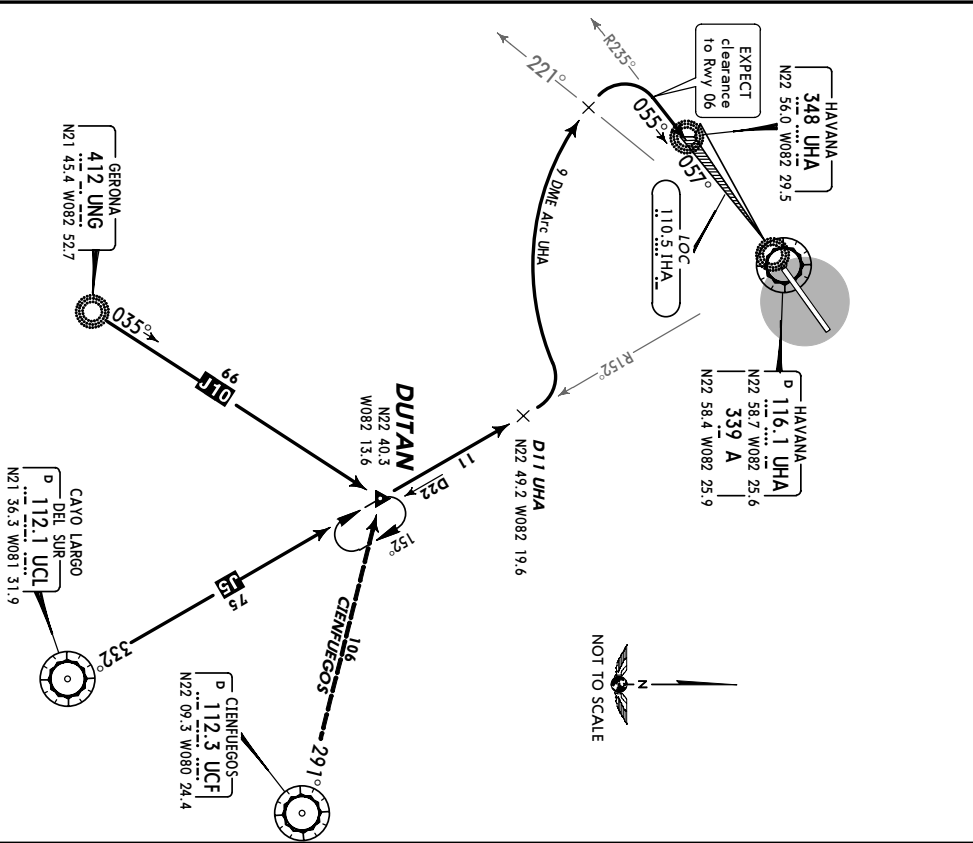
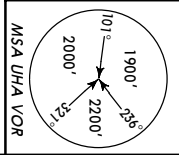
16 JUL 04 (10-2B)

HAVANA, CUBA  
STAR

\*ATIS 132.5  
Apt Elev 210'

Alt set: hPa  
Trans level: BY ATC  
Max 210 KT within 25 NM of UHA at or below  
FL 100 unless otherwise cleared by ATC.

DUTAN 1 ARRIVAL  
(RWY 06)



CIENFUEGOS

From UCF proceed on UCF R-291 direct to DUTAN.

TRANSITION

ROUTING

From DUTAN on UHA R-152 to D11 UHA turn LEFT on 9 DME Arc UHA, when crossing UHA R-221 turn RIGHT to intercept localizer course or UHA R-235 to UHA VOR and EXPECT Rwy 06 clearance.

© JEPPESEN SANDERSON, INC., 2003, 2004. ALL RIGHTS RESERVED.

MUHA/HAV  
JOSE MARTI INTL

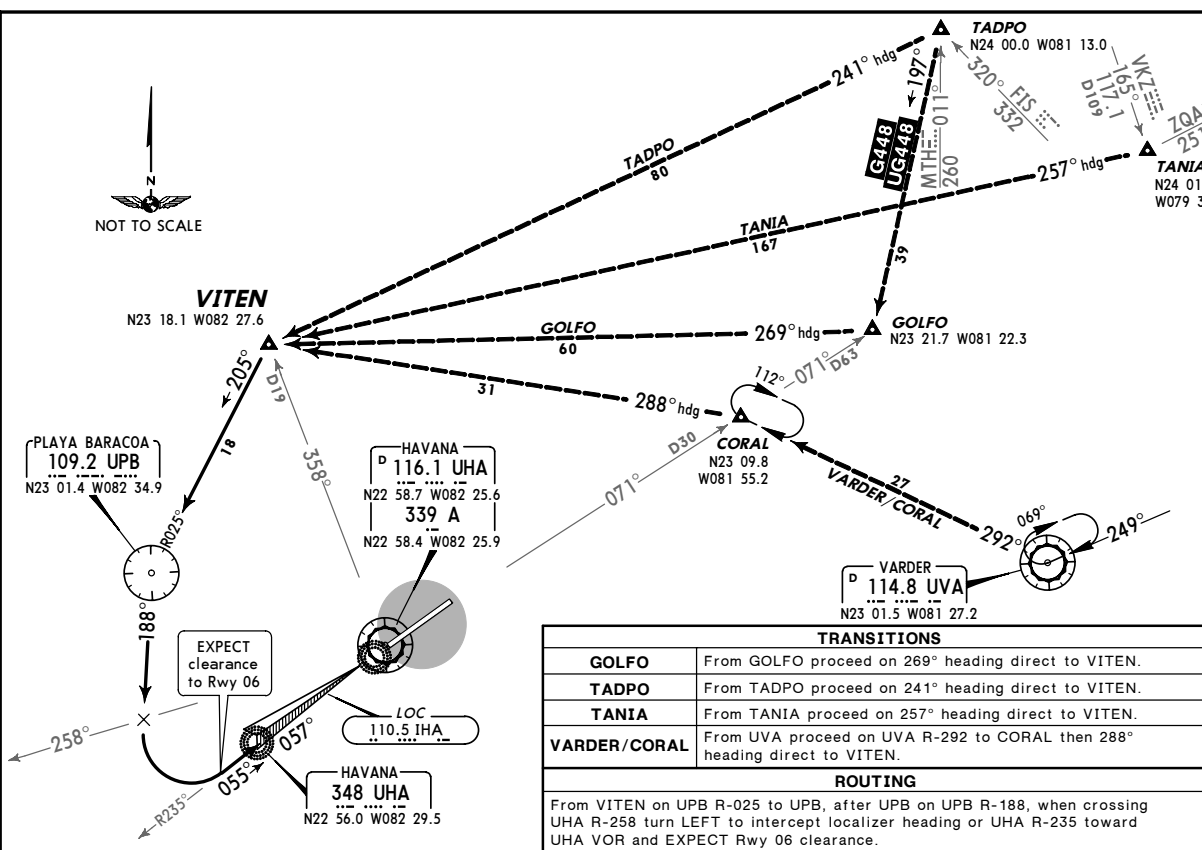
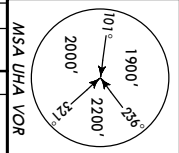
16 JUL 04 (10-2C)

HAVANA, CUBA  
STAR

\*ATIS 132.5  
Apt Elev 210'

Alt set: hPa  
Trans level: BY ATC  
Max 210 KT within 25 NM of UHA at or below  
FL 100 unless otherwise cleared by ATC.

VITEN 1 ARRIVAL  
(RWY 06)



TRANSITIONS	
GOLFO	From GOLFO proceed on 269° heading direct to VITEN.
TADPO	From TADPO proceed on 241° heading direct to VITEN.
TANIA	From TANIA proceed on 257° heading direct to VITEN.
VARDER/CORAL	From UVA proceed on UVA R-292 to CORAL then 288° heading direct to VITEN.

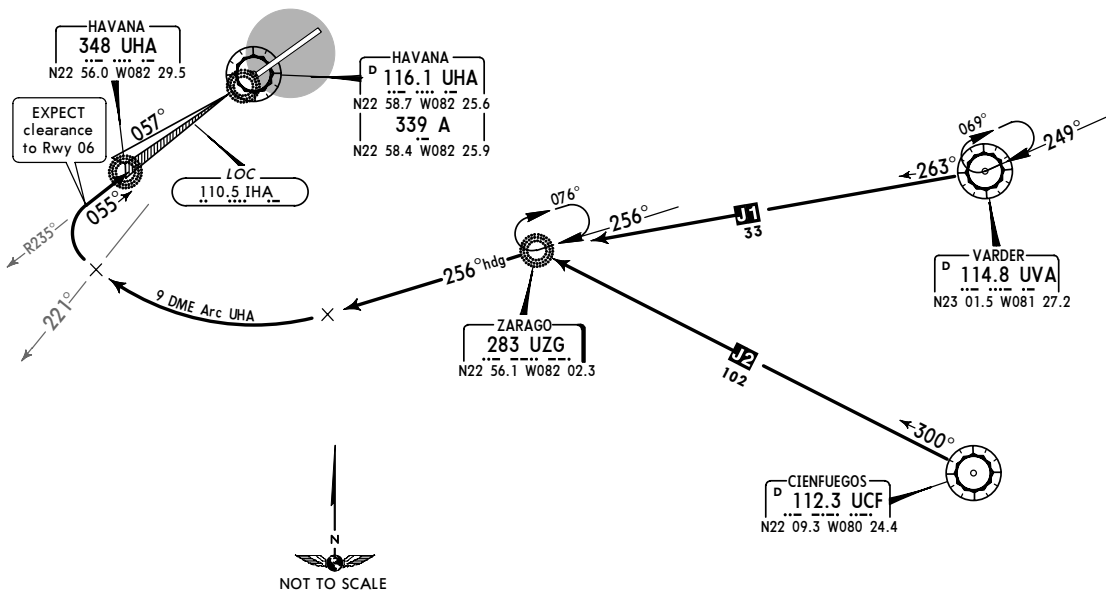
ROUTING	
From VITEN on UPB R-025 to UPB, after UPB on UPB R-188, when crossing UHA R-258 turn LEFT to intercept localizer heading or UHA R-235 toward UHA VOR and EXPECT Rwy 06 clearance.	

© JEPPESEN SANDERSON, INC., 2003, 2004. ALL RIGHTS RESERVED.

**MUHA/HAV**  
**JOSE MARTI INTL**  
 16 JUL 04 (10-2D)  
**JEPPesen**  
**HAVANA, CUBA**  
**STAR**

*ATIS <b>132.5</b>	Alt set: hpa
Apr Elev <b>210'</b>	Trans level: BY ATC
	Trans alt: 3000'
	Max 210 KT within 25 NM of UHA at or below
	FL 100 unless otherwise cleared by ATC.

**ZARAGO 1 ARRIVAL**  
(RWY 06)



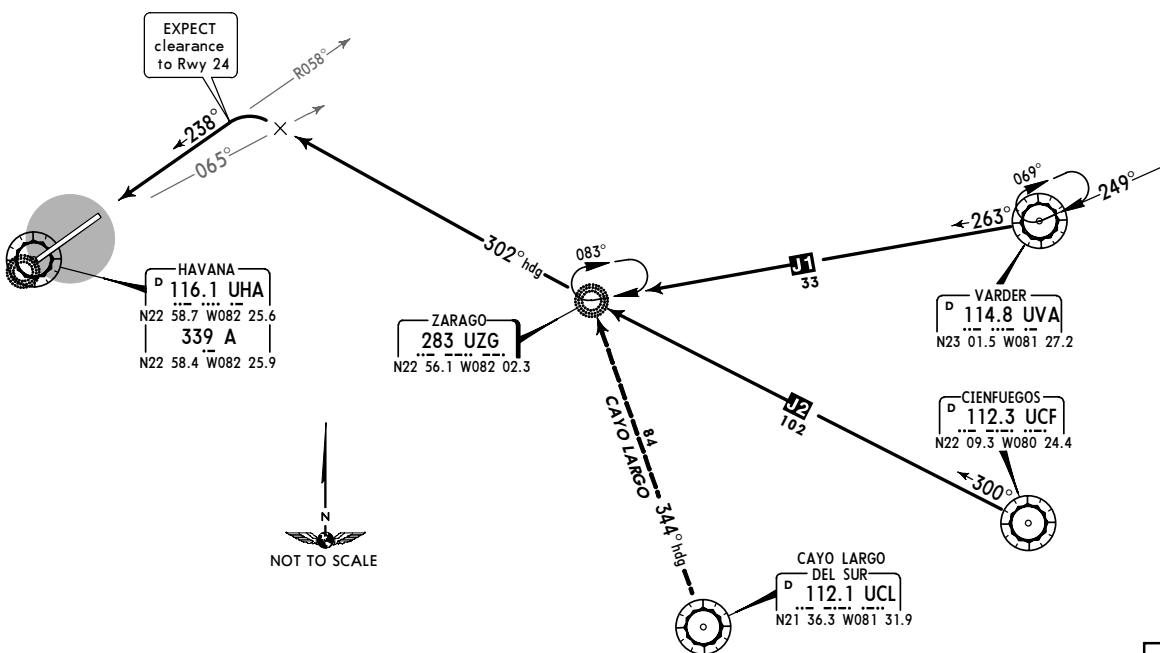
**ROUTING**

From UZG NDB proceed on 256° heading until intercepting 9 DME Arc UHA, when crossing UHA R-221 turn RIGHT to intercept localizer course or UHA R-235 to UHA VOR and EXPECT Rwy 06 clearance.

**MUHA/HAV**  
**JOSE MARTI INTL**  
 16 JUL 04 (10-2E)  
**JEPPesen**  
**HAVANA, CUBA**  
**STAR**

*ATIS <b>132.5</b>	Alt set: hpa
Apr Elev <b>210'</b>	Trans level: BY ATC
	Trans alt: 3000'
	Max 210 KT within 25 NM of UHA at or below
	FL 100 unless otherwise cleared by ATC.

**ZARAGO 1 ARRIVAL**  
(RWY 24)



**TRANSITION**

**CAYO LARGO** From UCL VOR proceed on 344° heading direct to UZG NDB.

**ROUTING**

From UZG NDB proceed on 302° heading, when crossing UHA R-065 turn LEFT to intercept UHA R-058 to UHA VOR and EXPECT Rwy 24 clearance.

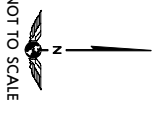
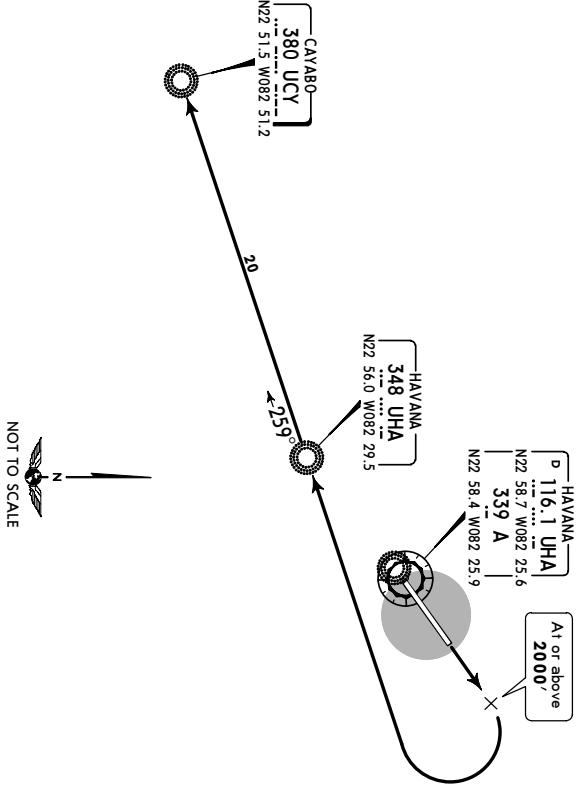
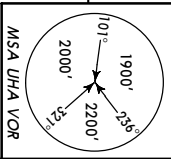
MUHA/HAV  
JOSE MARTI INTL

JEPPesen  
16 JUL 04 (10-3)

HAVANA, CUBA  
SID

Apr/Elev 210'  
Trans level: BY ATC Trans alt: 3000'  
Max 210 KT within 25 NM of UHA at or below  
FL 100 unless otherwise cleared by ATC.

**CAVABO 4 DEPARTURE**  
(RWY 06)



Climb on runway heading until **2000'** or above, turn **RIGHT** direct to UCY NDB and continue by assigned route.

**INITIAL CLIMB**

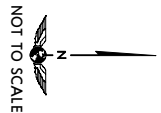
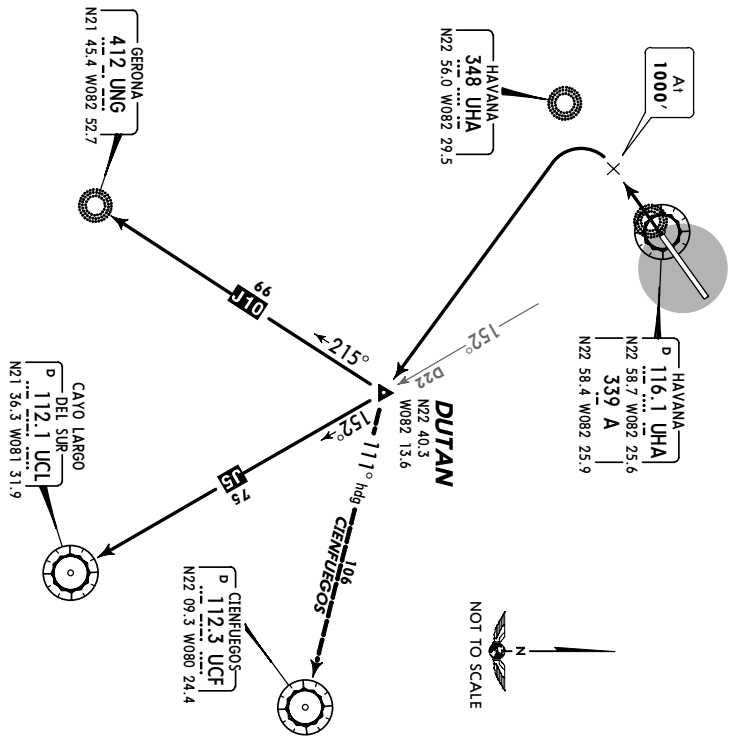
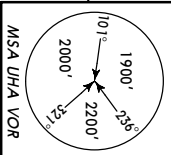
MUHA/HAV  
JOSE MARTI INTL

JEPPesen  
16 JUL 04 (10-3A)

HAVANA, CUBA  
SID

Apr/Elev 210'  
Trans level: BY ATC Trans alt: 3000'  
Max 210 KT within 25 NM of UHA at or below  
FL 100 unless otherwise cleared by ATC.

**DUTAN 2 DEPARTURE**  
(RWY 24)



Climb on runway heading to **1000'**, turn **LEFT** direct to DUTAN interception and continue by transition or assigned route.

**INITIAL CLIMB**

**TRANSITION**

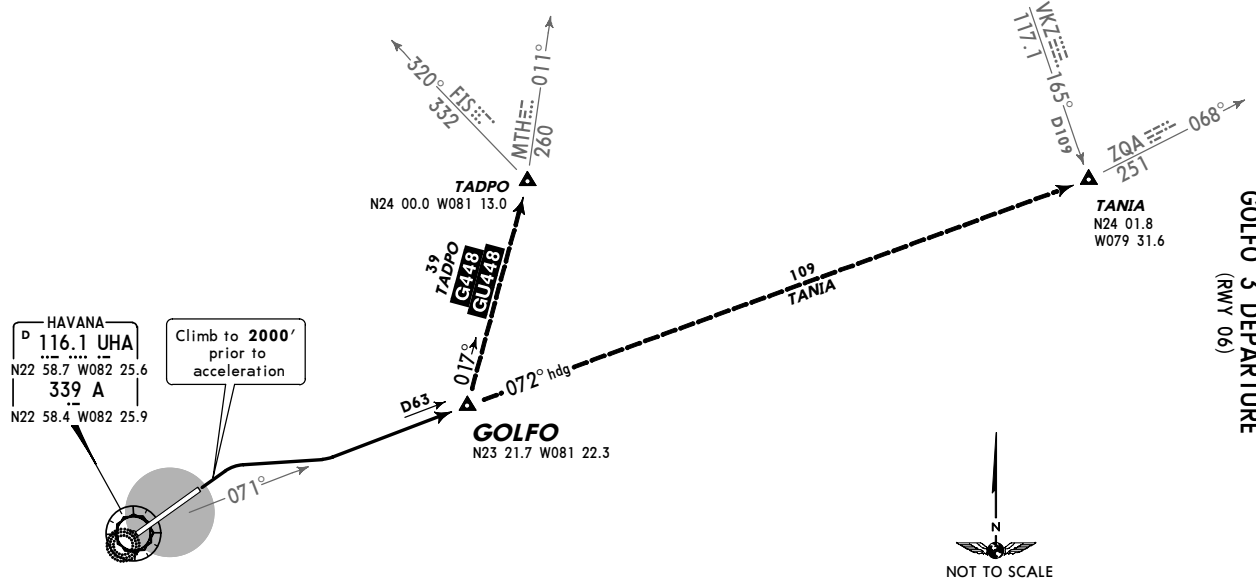
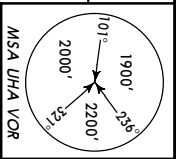
MUHA/HAV  
JOSE MARTI INTL

Jeppesen  
16 JUL 04 (10-3B)

HAVANA, CUBA  
SID

Apr/Elev  
210'  
Trans level: BY ATC Trans alt: 3000'  
Max 210 KT within 25 NM of UHA at or below  
FL 100 unless otherwise cleared by ATC.

**GOLFO 3 DEPARTURE**  
(RWY 06)



INITIAL CLIMB	
Climb to 2000' prior to acceleration, turn RIGHT to UHA R-071 direct to GOLFO and continue by transition or assigned route.	
TRANSITIONS	
TADPO	From GOLFO via G/GU-448 direct to TADPO.
TANIA	From GOLFO on 072° heading direct to TANIA.

CHANGES: Airspeed restriction, MSA. © JEPPESEN SANDERSON, INC., 2002, 2004. ALL RIGHTS RESERVED.

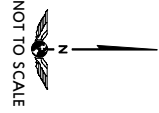
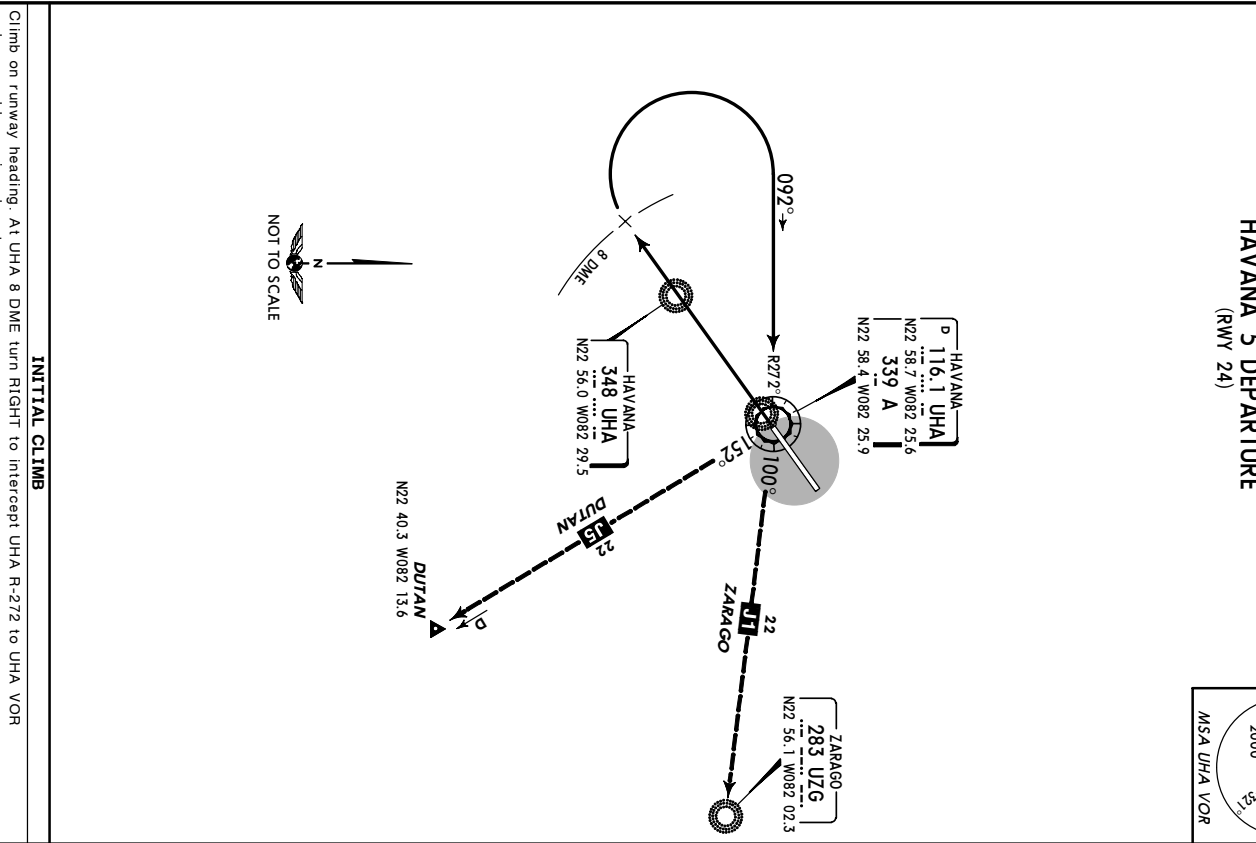
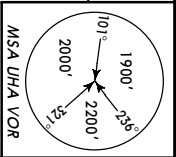
MUHA/HAV  
JOSE MARTI INTL

Jeppesen  
16 JUL 04 (10-3C)

HAVANA, CUBA  
SID

Apr/Elev  
210'  
Trans level: BY ATC Trans alt: 3000'  
Max 210 KT within 25 NM of UHA at or below  
FL 100 unless otherwise cleared by ATC.

**HAVANA 5 DEPARTURE**  
(RWY 24)

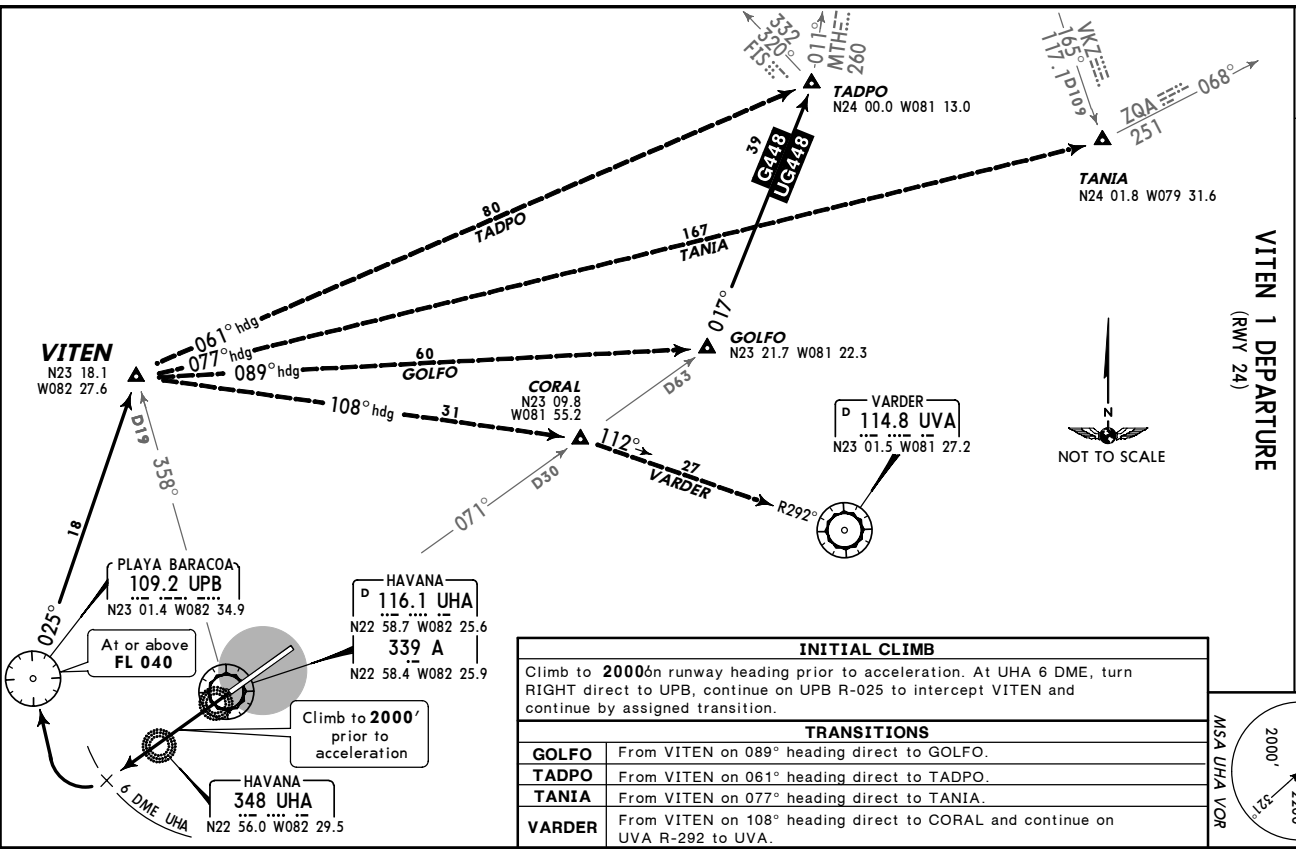


CHANGES: Airspeed restriction, MSA. © JEPPESEN SANDERSON, INC., 2002, 2004. ALL RIGHTS RESERVED.

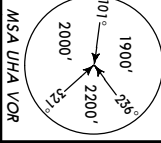
MUHA/HAV  
JOSE MARTI INTL  
16 JUL 04 (10-3D)  
JEPPesen  
HAVANA, CUBA  
SID

Apr Elev 210'  
Trans level: BY ATC Trans alt: 3000'  
Max 210 KT within 25 NM of UHA at or below  
FL 100 unless otherwise cleared by ATC.

VITEN 1 DEPARTURE  
(RWY 24)



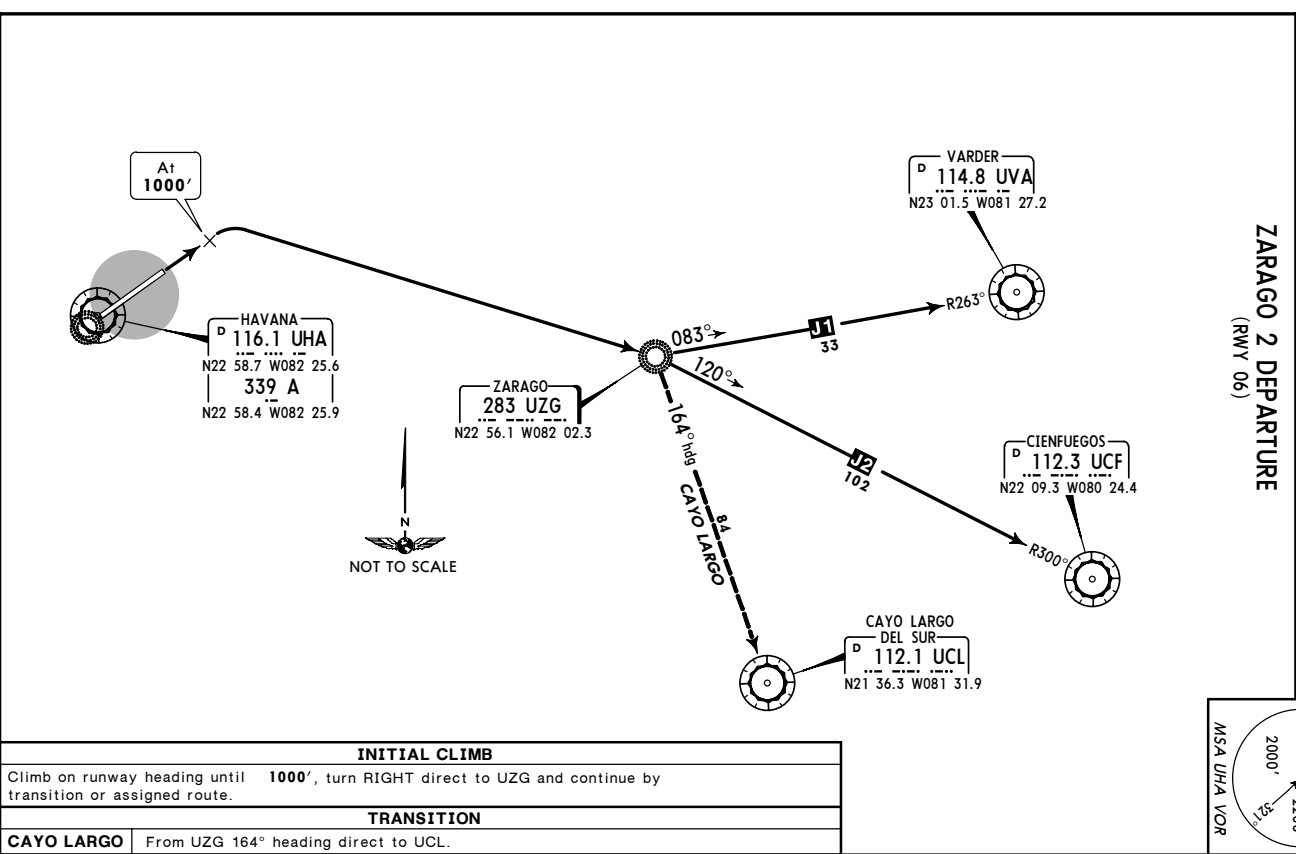
INITIAL CLIMB	
Climb to 2000ft runway heading prior to acceleration. At UHA 6 DME, turn RIGHT direct to UPB, continue on UPB R-025 to intercept VITEN and continue by assigned transition.	
TRANSITIONS	
<b>GOLFO</b>	From VITEN on 089° heading direct to GOLFO.
<b>TADPO</b>	From VITEN on 061° heading direct to TADPO.
<b>TANIA</b>	From VITEN on 077° heading direct to TANIA.
<b>VARDER</b>	From VITEN on 108° heading direct to CORAL and continue on UVA R-292 to UVA.



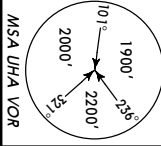
MUHA/HAV  
JOSE MARTI INTL  
16 JUL 04 (10-3E)  
JEPPesen  
HAVANA, CUBA  
SID

Apr Elev 210'  
Trans level: BY ATC Trans alt: 3000'  
Max 210 KT within 25 NM of UHA at or below  
FL 100 unless otherwise cleared by ATC.

ZARAGO 2 DEPARTURE  
(RWY 06)



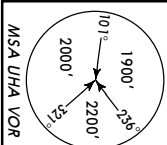
INITIAL CLIMB	
Climb on runway heading until 1000', turn RIGHT direct to UZG and continue by transition or assigned route.	
TRANSITION	
<b>CAYO LARGO</b>	From UZG 164° heading direct to UCL.



**MUHA/HAV**  
**JOSE MARTI INTL**  
 16 JUL 04  
**JEPPESEN**  
 10-3F  
**HAVANA, CUBA**  
**SID**

Apr Elev 210'  
 Trans level: By ATC Trans alt: 3000'  
 Max 210 KT within 25 NM of UHA at or below  
 FL 100 unless otherwise cleared by ATC.

**ZARAGO 4 DEPARTURE**  
 (RWY 24)



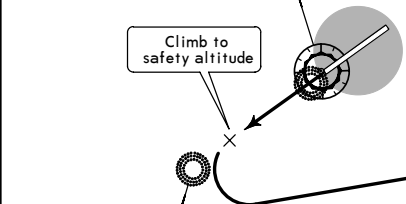
VARDER  
 D 114.8 UVA  
 N23 01.5 W081 27.2



ZARAGO  
 283 UZG  
 N22 56.1 W082 02.3

HAVANA  
 D 116.1 UHA  
 N22 58.7 W082 25.6  
 339 A  
 N22 58.4 W082 25.9

HAVANA  
 348 UHA  
 N22 56.0 W082 29.5



**INITIAL CLIMB**

Climb on runway heading to safety altitude, turn LEFT direct to UZG and continue by assigned route.

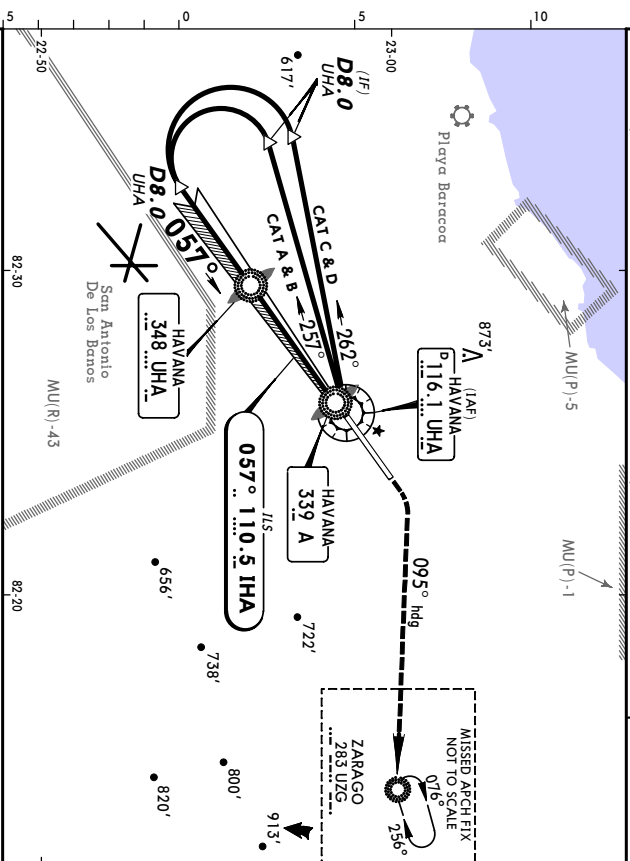
**MUHA/HAV**  
**JOSE MARTI INTL**  
 11 FEB 05  
**JEPPESEN**  
 11-1  
**HAVANA, CUBA**  
**ILS RWY 06**

\*ATIS  
 132.5  
 HAVANA Approach (FR)  
 119.35  
 MARTI tower  
 118.1

LOC IHA	Final Appch Crs	GS LOM	ILS DA(H)	Aprt Elev
110.5	057°	1700' (1497')	403' (200')	203'
MISSED ARCH: Climb to 2000' and turn RIGHT on 095° heading to UZG NDB holding pattern. Climb to 2000' before level acceleration.				
MARTI tower				



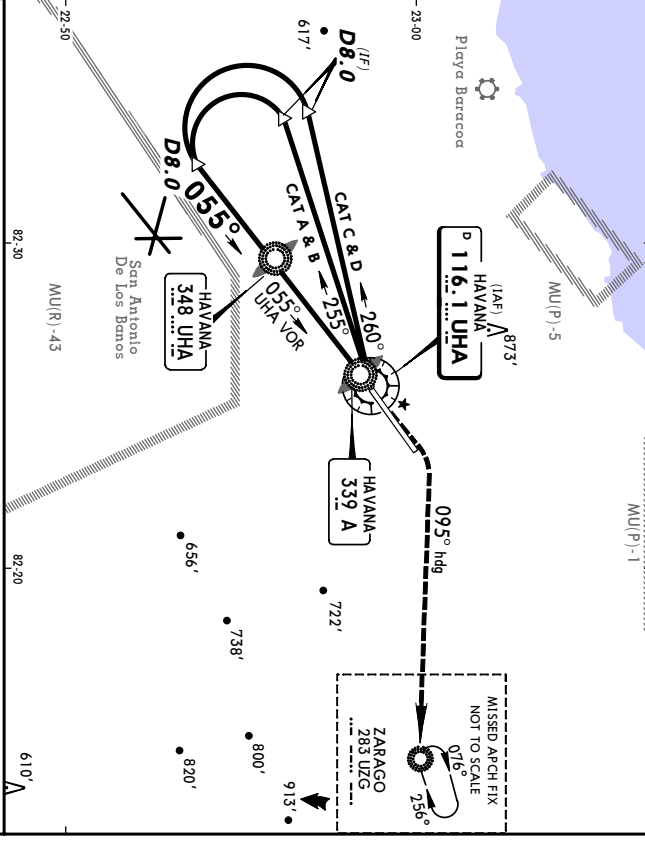
Alt Set: hPa  
 Rwy Elev: 7 hPa  
 1. Caution: Rwy 05 at San Antonio De Los Baños has the same alignment and is very close to Rwy 06 at Jose Marti Intl. Adhere to established procedure even in WMC.



PANS OPS		FULL		ALTS out		ALTS out		CIRCLE-TO-LAND	
A	0.8 km	70	90	100	120	140	160	2000'	095° hdg
B	1.2 km	377	485	538	646	754	861	800' (590') - 3.7 km	283 UZG
C	1.6 km	3.361	2.481	2.331	2:06	1:48	1:33	1000' (790') - 4.6 km	
D									

**MUHA/HAV** **JEPPIESSEN** **HAVANA, CUBA**  
**JOSE MARTI INTL** 28 JAN 05 **(3-1)** **VOR DME Rwy 06**

*ATIS 132.5		HAVANA Approach (4R) 119.35		MARTI tower 118.1	
VOR UHA	Final 116.1	Minimum Alt LOM 1700' (1497')	MDA(H) 610' (407')	Appt Elev 210'	RWY 06 203'
MISSED APCH: Climb to 2000' and turn RIGHT on 095° heading to UZG NDB holding pattern. Alt Set: HPA Rwy Elev: 7 hPa Trans level: By ATC Trans alt: 3000' 1. Caution: Rwy 05 at San Antonio De Los Banos has the same alignment and is very close to rwy 06 at Jose Marti Intl. Adhere to established procedure even in VMC.					
				MSA UHA VOR	



Gnd speed Kts		70	90	100	120	140	160	HIALS		
Descent Gradient		5.2%	369	474	577	652	737	843	2000'	
MAP at LMM or LOM to MAP		4:21	3:36	2:48	2:31	2:06	1:48	1:35	095°	
STRAIGHT-IN LANDING RWY 06									RT	UZG
MDA(H) 610' (407')									hdg	283
ALS out									CIRCLE-TO-LAND	
Max Kts									MDA(H)	
A	100								800' (590') - 3.7 km	
B	135									
C	180									
D	205								1000' (790') - 4.6 km	

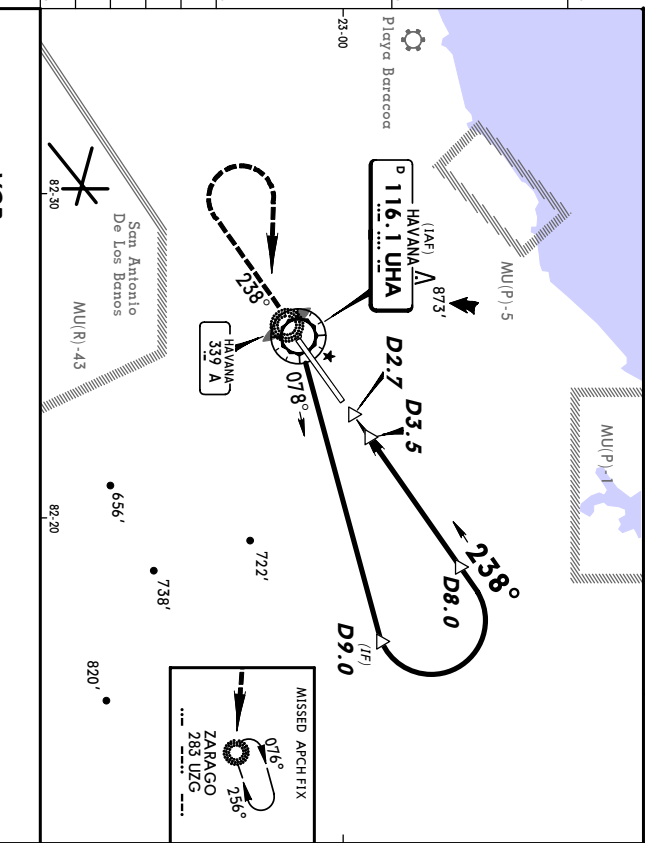
PANS OPS

CHANGES: Approach Frequency.

© JEPPIESSEN SANDERSON, INC., 2001, 2005. ALL RIGHTS RESERVED.

**MUHA/HAV** **JEPPIESSEN** **HAVANA, CUBA**  
**JOSE MARTI INTL** 28 JAN 05 **(3-2)** **CAT A & B VOR DME Rwy 24**

*ATIS 132.5		HAVANA Approach (4R) 119.35		MARTI tower 118.1	
VOR UHA	Final 116.1	Minimum Alt LOM 2000' (1790')	MDA(H) 650' (440')	Appt Elev 210'	RWY 24 210'
MISSED APCH: Climb outbound on UHA VOR R-238 to 2000', turn RIGHT to UZG NDB holding pattern. Climb to 2000' before level acceleration. Alt Set: HPA Rwy Elev: 8 hPa Trans level: By ATC Trans alt: 3000' 1. Caution: Rwy 05 at San Antonio De Los Banos has the same alignment and is very close to rwy 06 at Jose Marti Intl. Adhere to established procedure even in VMC.					
				MSA UHA VOR	



Gnd speed Kts		70	90	100	120	140	160	HIALS		
Descent Gradient		4.8%	340	437	486	583	681	778	2000'	
MAP at D2.7 or FAF to MAP		5:31	4:33	3:32	3:11	2:39	2:16	1:59	095°	
STRAIGHT-IN LANDING RWY 24									RT	UZG
MDA(H) 650' (440')									hdg	283
ALS out									CIRCLE-TO-LAND	
Max Kts									MDA(H)	
A	100								800' (590') - 3.7 km	
B	135									
C	180									
D	205								NOT APPLICABLE	

PANS OPS

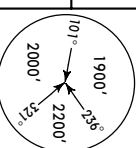
CHANGES: Approach Frequency.

© JEPPIESSEN SANDERSON, INC., 2001, 2005. ALL RIGHTS RESERVED.



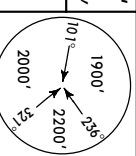
**MUHA/HAV** **JEPPESEN** **HAVANA, CUBA**  
**JOSE MARTI INTL** 28 JAN 05 **(13-3)** **CAT C & D VOR DME RWY 24**

*A/TIS		HAVANA Approach (°R)		*MARTI Tower	
VOR	Final	Minimum Alt	MDA(H)	Apt Elev	
UHA	Apch Crs	D8.0	650' (440')	RWY 24	210'
116.1	238°	2000' (1790')			



MSA UHA VOR

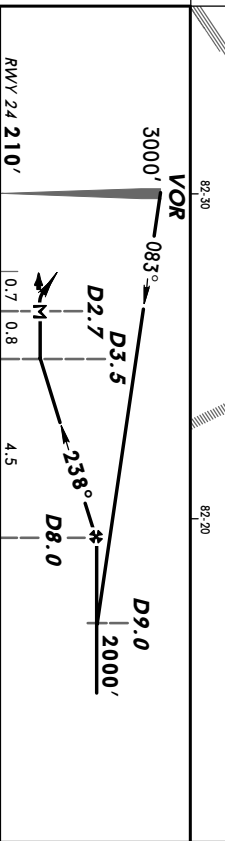
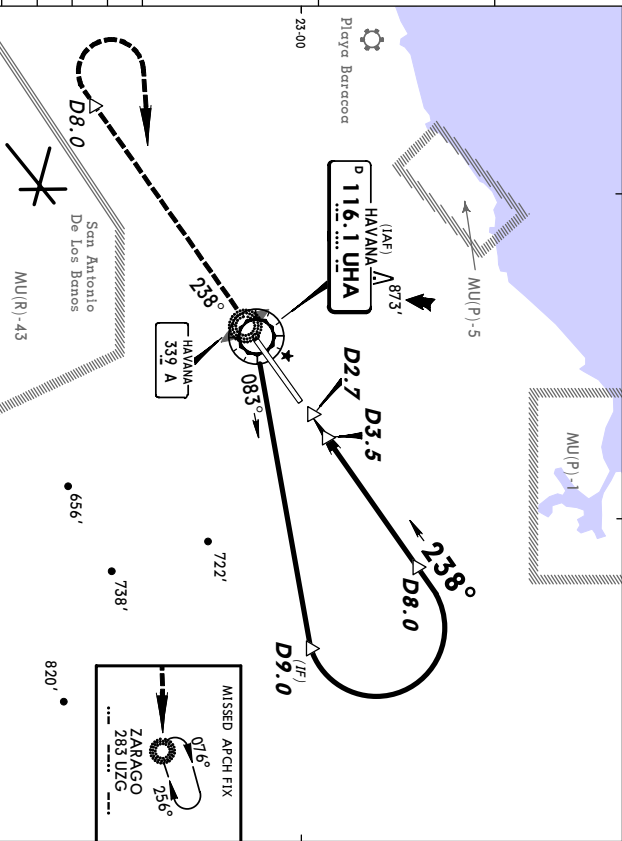
*A/TIS		HAVANA Approach (°R)		*MARTI Tower	
LOM	Final	Minimum Alt	MDA(H)	Apt Elev	
UHA	Apch Crs	LOM	610' (407')	RWY 06	203'
348	057°	1700' (1497')			



MSA A LMM

**MISSED APCH:** Climb to 2000' and turn RIGHT on 095° heading to UZG NDB holding pattern. Climb to 2000' before level acceleration.

**Alt Set:** hPa Rwy Elev: 7 hPa Trans level: By ATC  
 1. CAUTION: Rwy 05 at San Antonio De Los Banos has the same alignment and is very close to Rwy 06 at Jose Marti Intl. Adhere to established procedure even in VMC.



70	90	100	120	140	160	3000'	UHA	D8.0	UZG
340	437	486	583	681	778	3000'	on 116.1	at	283
MAP at D2.7 or						PAPI			
MAP to MAP						R-238			
5.3: 4.3:3.3: 3.32: 3.11: 2.3:91: 2.16: 1:1:591						CIRCLE-TO-LAND			

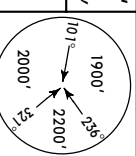
STRAIGHT-IN LANDING RWY 24  
 MDA(H) 650' (440')

A	NOT APPLICABLE	Max Kts	MDA(H)
B	NOT APPLICABLE	100	135
C	NOT APPLICABLE	180	180
D	2.8 km	205	205

CHANGES: Approach frequency.

**MUHA/HAV** **JEPPESEN** **HAVANA, CUBA**  
**JOSE MARTI INTL** 11 FEB 05 **(16-1)** **NDB RWY 06**

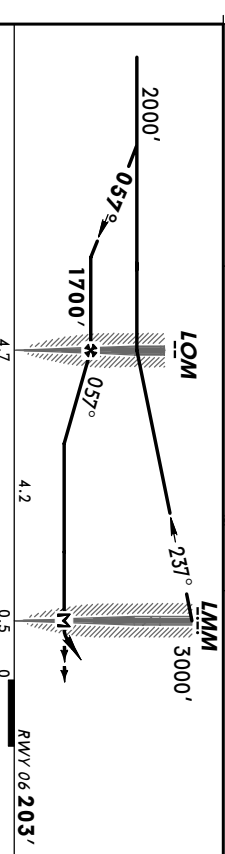
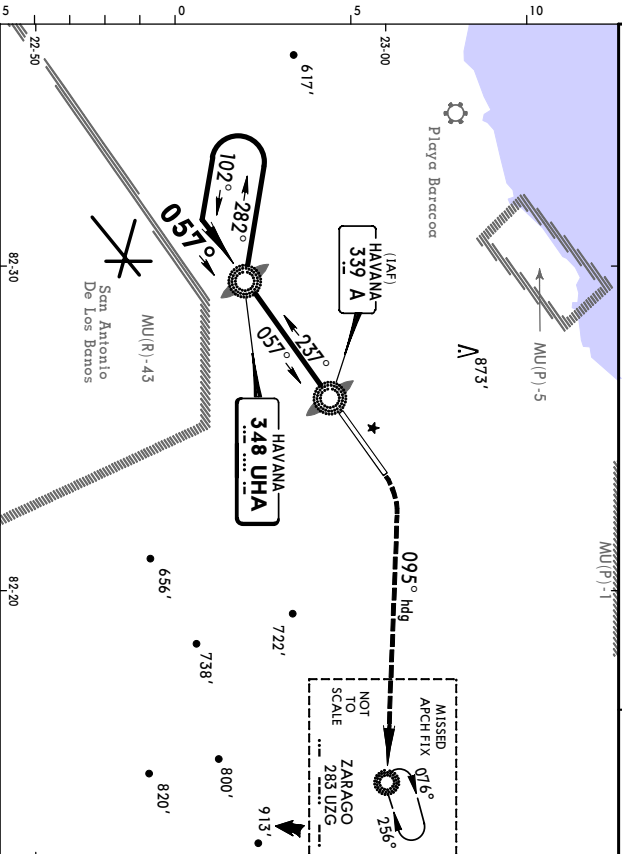
*A/TIS		HAVANA Approach (°R)		*MARTI Tower	
LOM	Final	Minimum Alt	MDA(H)	Apt Elev	
UHA	Apch Crs	LOM	610' (407')	RWY 06	203'
348	057°	1700' (1497')			



MSA A LMM

**MISSED APCH:** Climb to 2000' and turn RIGHT on 095° heading to UZG NDB holding pattern. Climb to 2000' prior to level acceleration.

**Alt Set:** hPa Rwy Elev: 7 hPa Trans level: By ATC  
 1. CAUTION: Rwy 05 at San Antonio De Los Banos has the same alignment and is very close to Rwy 06 at Jose Marti Intl. Adhere to established procedure even in VMC.



70	90	100	120	140	160	2000'	LMM	095°	UZG
369	474	527	632	737	843	2000'	on 116.1	at	283
MAP at LMM or						PAPI			
MAP to MAP						R-238			
4.2: 3:36: 2:48: 2:31: 2:06: 1:48: 1:35						CIRCLE-TO-LAND			

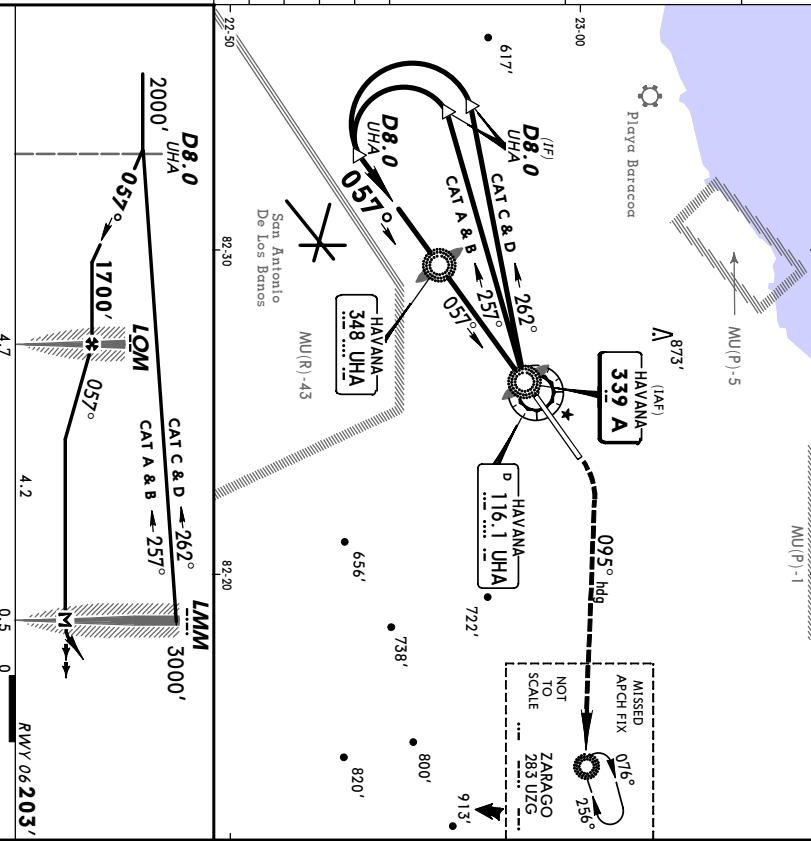
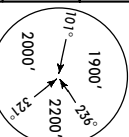
STRAIGHT-IN LANDING RWY 06  
 MDA(H) 610' (407')

A	NOT APPLICABLE	Max Kts	MDA(H)
B	NOT APPLICABLE	100	135
C	NOT APPLICABLE	180	180
D	1.6 km	205	205

CHANGES: Procedure ident.

**MUHA/HAV**  
**JOSE MARTI INTL**  
 11 FEB 05 (16-2)  
**HAVANA, CUBA**  
**NDB LOCATOR Rwy 06**

*ATIS		HAVANA Approach (R8)		MARTI tower	
LMM	132.5	119.35	118.1		
A	Final	Minimum Alt	MDA(H)	Appt Elev	210'
339	Apch Crs	LOM	610' (407')	RWY 06	203'
MISSED APCH: Climb to 2000' and turn RIGHT on 095° heading to LZG NDB holding pattern. Climb to 2000' prior to level acceleration.					
All Set: RPA 1. CAUTION: Rwy 05 at San Antonio De Los Baños has the same alignment and is very close to Rwy 06 at Jose Marti Intl. Adhere to established procedure even in VMC.			Trans alt: 3000'		
Rwy Elev: 7 hPa			Trans alt: 3000'		
MS4 A LMM					

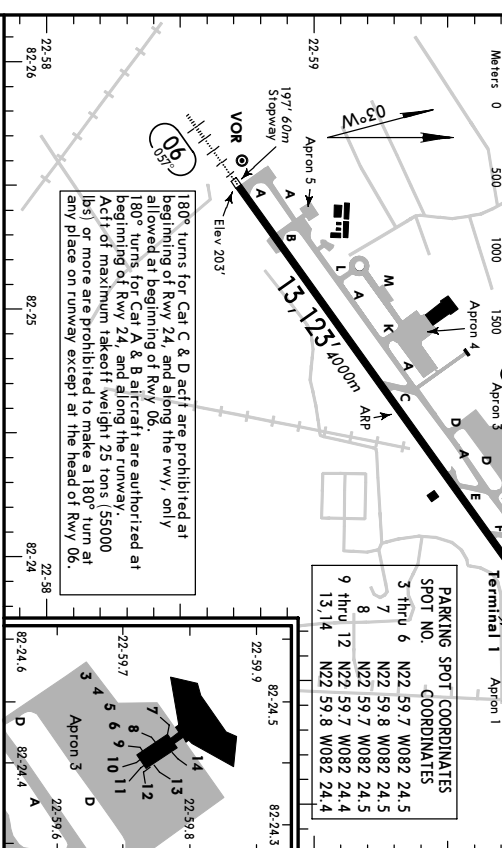
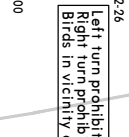


Grnd speed-Kts	70	90	100	120	140	160	HIALS	2000'	RT	095°	UZG
MAP at LMM	369	474	527	632	737	843	PAPI	2000'	RT	095°	283
LOM to MAP	4.2	3.36	2.48	2.31	2.06	1.35	REIL	2000'	RT	095°	283
STRAIGHT-IN LANDING RWY 06											
MDA(H) 610' (407')											

A	ALS out		Max Kts	100	800' (590') - 3.7 km
B			135		
C			180		
D			205		1000' (790') - 4.6 km

**MUHA/HAV**  
**JOSE MARTI INTL**  
 11 FEB 05 (11-1)  
**HAVANA, CUBA**  
**JOSE MARTI INTL**

*ATIS		MARTI Clearance		Tower	
LMM	132.5	121.9	118.1		
A	Final	Minimum Alt	MDA(H)	Appt Elev	210'
339	Apch Crs	LOM	610' (407')	RWY 06	203'
MISSED APCH: Climb to 2000' and turn RIGHT on 095° heading to LZG NDB holding pattern. Climb to 2000' prior to level acceleration.					
All Set: RPA 1. CAUTION: Rwy 05 at San Antonio De Los Baños has the same alignment and is very close to Rwy 06 at Jose Marti Intl. Adhere to established procedure even in VMC.			Trans alt: 3000'		
Rwy Elev: 7 hPa			Trans alt: 3000'		
MS4 A LMM					



RWY	RL HIALS	PAPI	REIL	ANGLE	USABLE LENGTHS	TAKE-OFF	WIDTH
06	24	RL SALS	PAPI-1	(angle 3.0°)		148'	45m

TAKE-OFF & DEPARTURE PROCEDURE		RWY 24	
A	610' - 1.6 km	440' - 2.8 km	
B	510' - 1.0 km	200' - 1.6 km	
DEPARTURE PROCEDURE: Left turn prohibited Rwy's 06 & 24.			