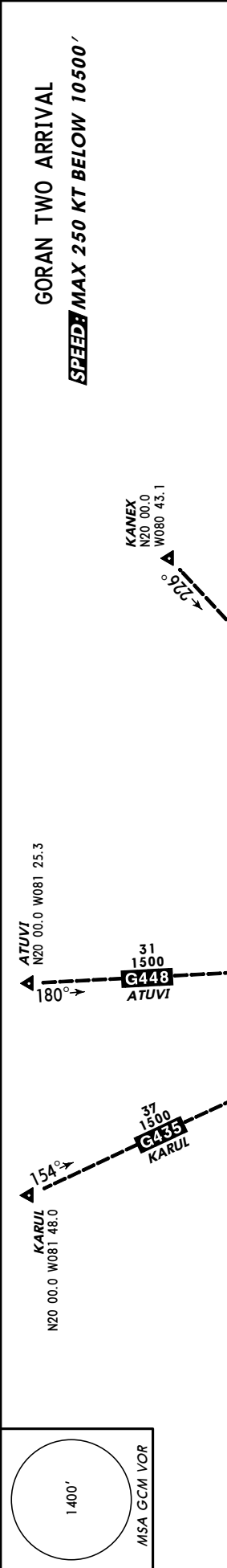


*ATIS **132.35** Alt Set: hPa and INCHES Trans level: FL 180 Trans alt: 17000' VOR/DME required.

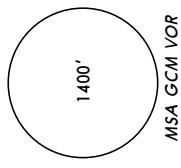


TRANSITIONS

ALOBO	From ALOBO to GORAN: Via GCM R-174 inbound to D12 GCM, then turn LEFT via GCM 10 DME Arc and GCM R-260 inbound.
ATUVI	From ATUVI to GORAN: Via GCM R-360 inbound to D12 GCM, then turn RIGHT via GCM 10 DME Arc and GCM R-260 inbound.
DELKA	From DELKA to GORAN: Via GCM R-214 inbound to D12 GCM, then turn LEFT via GCM 10 DME Arc and GCM R-260 inbound.
EMONA	From EMONA to GORAN: Via GCM R-187 inbound to D12 GCM, then turn LEFT via GCM 10 DME Arc and GCM R-260 inbound.
KANEX	From KANEX to GORAN: Via GCM R-045 inbound to GCM, then via GCM R-290 outbound to D8 GCM, then turn LEFT via GCM 10 DME Arc and GCM R-260 inbound.
KARUL	From KARUL to GORAN: Via GCM R-334 inbound to D12 GCM, then turn RIGHT via GCM 10 DME Arc and GCM R-260 inbound.
LEROL	From LEROL to GORAN: Via GCM R-204 inbound to D12 GCM, then turn LEFT via GCM 10 DME Arc and GCM R-260 inbound.
MAMBI	From MAMBI to GORAN: Via GCM R-288 inbound to D12 GCM, then turn RIGHT via GCM 10 DME Arc and GCM R-260 inbound.
MATIS	From MATIS to GORAN: Via GCM R-118 inbound to GCM, then via GCM R-290 outbound to D8 GCM, then turn LEFT via GCM 10 DME Arc and GCM R-260 inbound.
NALRO	From NALRO to GORAN: Via GCM R-107 inbound to GCM, then via GCM R-290 outbound to D8 GCM, then turn LEFT via GCM 10 DME Arc and GCM R-260 inbound.
NUBIS	From NUBIS to GORAN: Via GCM R-260 inbound.
TEXAM	From TEXAM to GORAN: Via GCM R-078 inbound to GCM, then via GCM R-290 outbound to D8 GCM, then turn LEFT via GCM 10 DME Arc and GCM R-260 inbound.
ULISA	From ULISA to GORAN: Via GCM R-237 inbound to D12 GCM, then turn LEFT via GCM 10 DME Arc and GCM R-260 inbound.

ROUTING

Via GCM R-260 inbound to GORAN descending to ATC assigned flight level/altitude. Hold at GORAN
MAINTAINING ATC assigned altitude unless/until cleared by ATC to execute the VOR/DME approach procedure to Rwy 08.



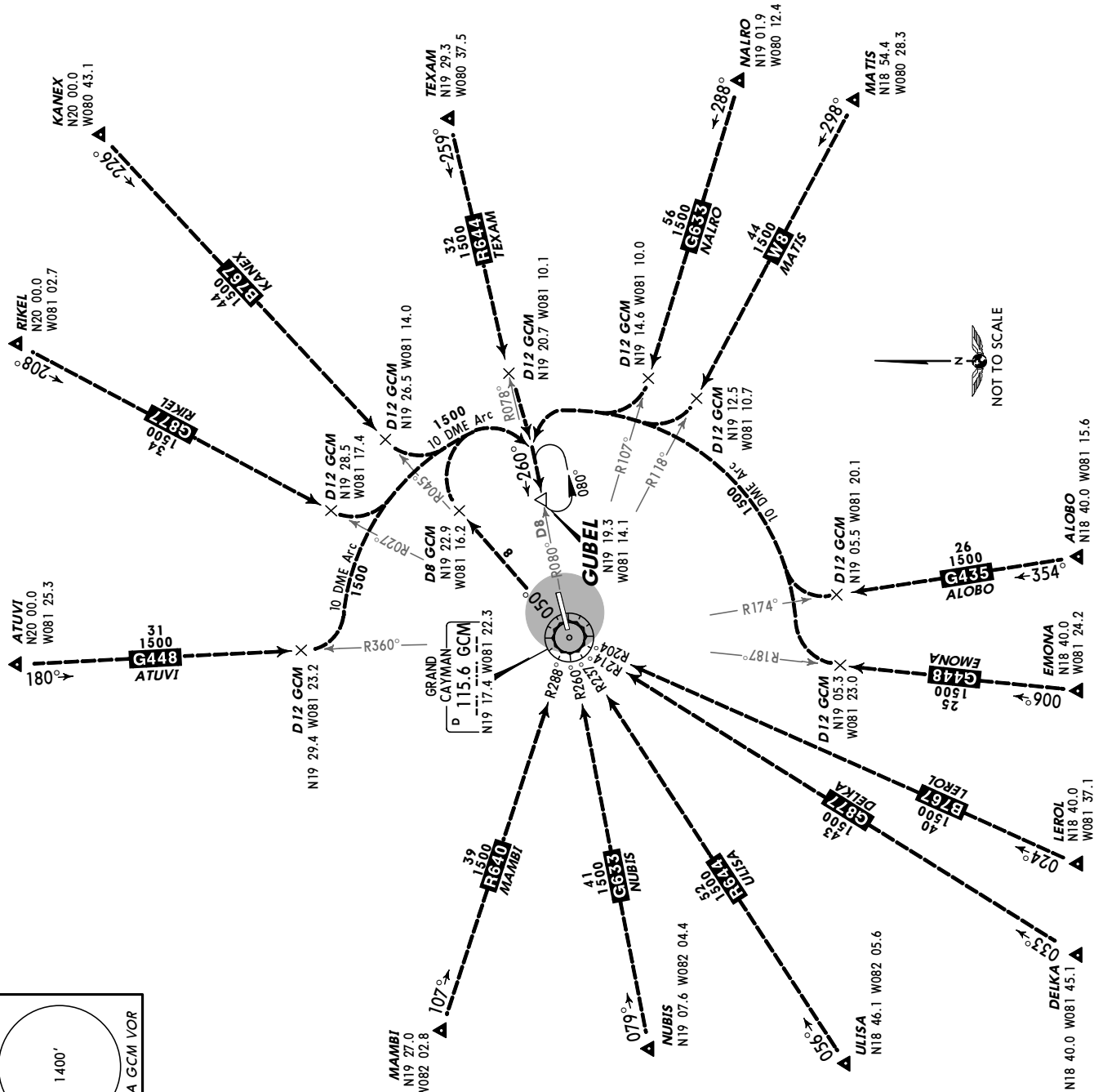
GUBEL TWO ARRIVAL

SPEED: MAX 250 KT BELOW 10500'

TRANSITIONS	
ALOBO	From ALOBO to GUBEL: Via GCM R-174 inbound to D12 GCM, then turn RIGHT via GCM 10 DME Arc and GCM R-080 inbound.
ATUVI	From ATUVI to GUBEL: Via GCM R-360 inbound to D12 GCM, then turn LEFT via GCM 10 DME Arc and GCM R-080 inbound.
DELKA	From DELKA to GUBEL: Via GCM R-214 inbound to GCM, then via GCM R-050 outbound to D8 GCM, then turn RIGHT via GCM 10 DME Arc and GCM R-080 inbound.
EMONA	From EMONA to GUBEL: Via GCM R-187 inbound to D12 GCM, then turn RIGHT via GCM 10 DME Arc and GCM R-080 inbound.
KANEX	From KANEX to GUBEL: Via GCM R-045 inbound to D12 GCM, then turn LEFT via GCM 10 DME Arc and GCM R-080 inbound.
LEROL	From LEROL to GUBEL: Via GCM R-204 inbound to GCM, then turn RIGHT via GCM R-050 outbound to D8 GCM, then turn RIGHT via GCM 10 DME Arc and GCM R-080 inbound.
MAMBI	From MAMBI to GUBEL: Via GCM R-288 inbound to GCM, then via GCM R-050 outbound to D8 GCM, then turn RIGHT via GCM 10 DME Arc and GCM R-080 inbound.
MATTIS	From MATTIS to GUBEL: Via GCM R-118 inbound to D12 GCM, then turn RIGHT via GCM 10 DME Arc and GCM R-080 inbound.
NALRO	From NALRO to GUBEL: Via GCM R-107 inbound to D12 GCM, then turn RIGHT via GCM 10 DME Arc and GCM R-080 inbound.
NUBIS	From NUBIS to GUBEL: Via GCM R-260 inbound to GCM, then via GCM R-050 outbound to D8 GCM, then turn RIGHT via GCM 10 DME Arc and GCM R-080 inbound.
RIKEL	From RIKEL to GUBEL: Via GCM R-027 inbound to D12 GCM, then turn LEFT via GCM 10 DME Arc and GCM R-080 inbound.
TEXAM	From TEXAM to GUBEL: Via GCM R-078 inbound to D12 GCM, then turn LEFT to intercept GCM R-080 inbound.
ULISA	From ULISA to GUBEL: Via GCM R-237 inbound to GCM, then via GCM R-050 outbound to D8 GCM, then turn RIGHT via GCM 10 DME Arc and GCM R-080 inbound.

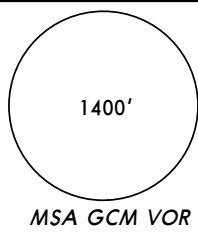
ROUTING

Via GCM R-080 inbound to GUBEL descending to ATC assigned flight level/altitude. Hold at GUBEL
MAINTAINING ATC assigned altitude unless/until cleared by ATC to execute the VOR DME approach procedure to Rwy 26.



Apt Elev
8'

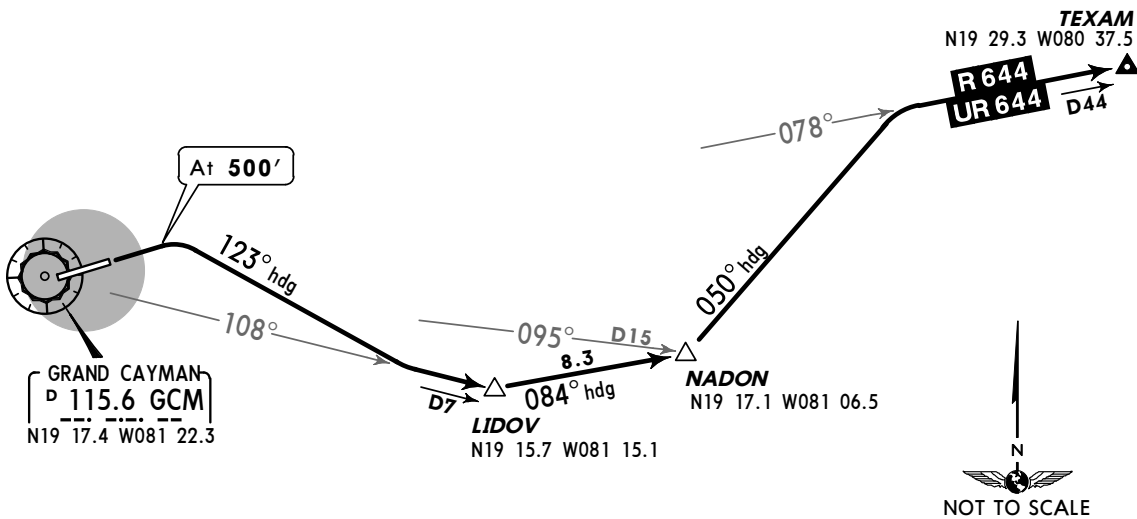
Trans level: FL180 Trans alt: 17000'
VOR/DME required.



EAST END TWO DEPARTURE

(RWY 08)

SPEED: MAX 250 KT BELOW 10500'



INITIAL CLIMB

ALTITUDE

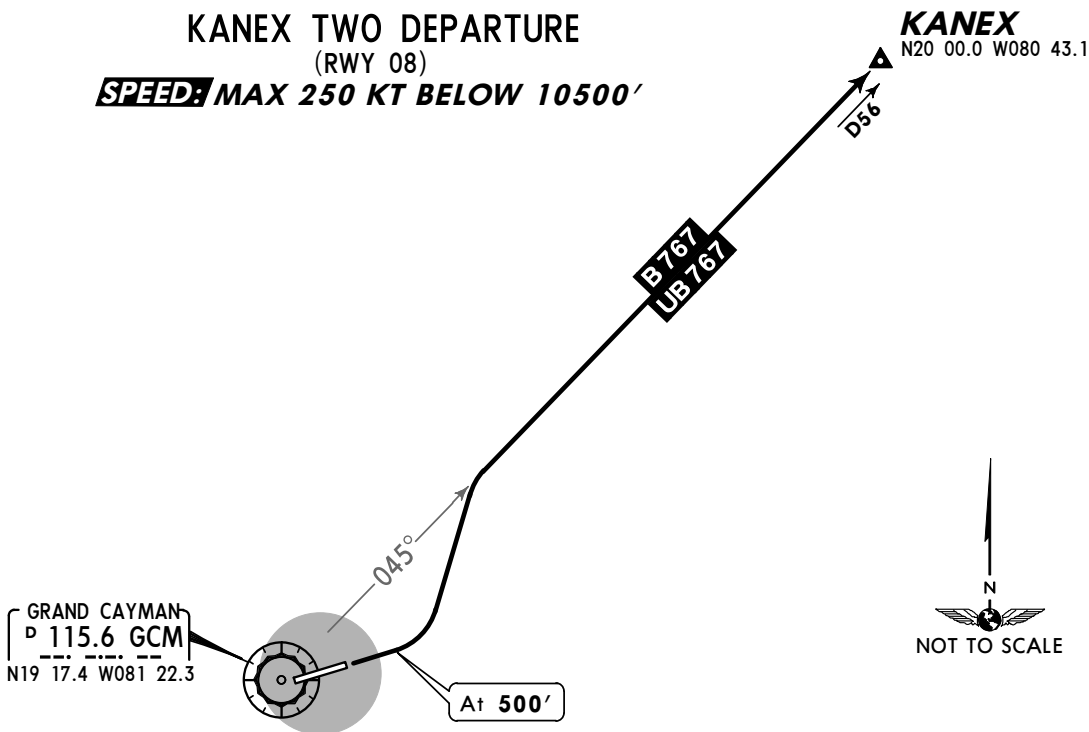
Climb on runway heading to 500', then turn RIGHT heading 123° to intercept and proceed on GCM R-108 to LIDOV. Then turn LEFT heading 084° to NADON, then turn LEFT heading 050° to intercept R/UR-644 route.

Climb to 5000' or flight level/altitude assigned by ATC.

KANEX TWO DEPARTURE

(RWY 08)

SPEED: MAX 250 KT BELOW 10500'



INITIAL CLIMB

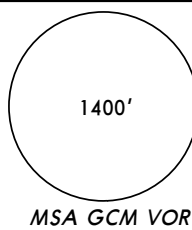
ALTITUDE

Climb on runway heading to 500', then turn LEFT to intercept B/UB-767 route.

Climb to 8000' or flight level/altitude assigned by ATC.

Apt Elev
8'

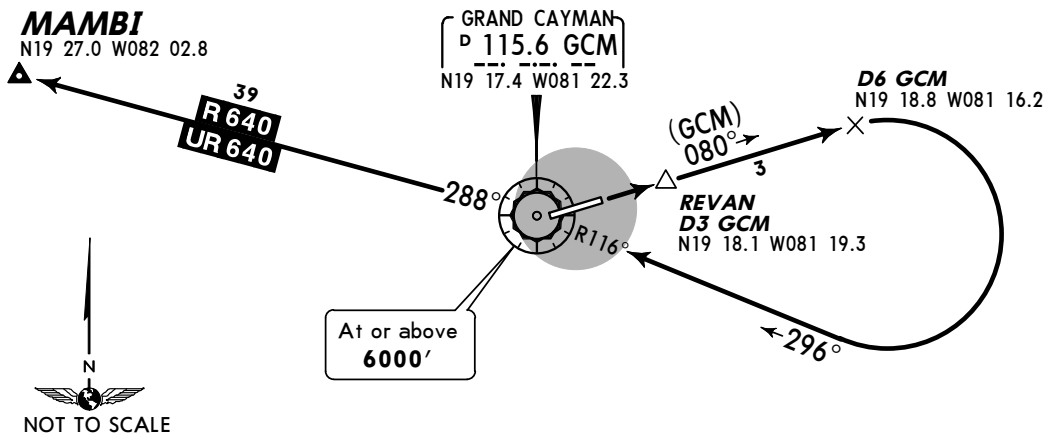
Trans level: FL180 Trans alt: 17000'
VOR/DME required.



MAMBI TWO DEPARTURE

(RWY 08)

SPEED: MAX 250 KT BELOW 10500'



INITIAL CLIMB

ALTITUDE

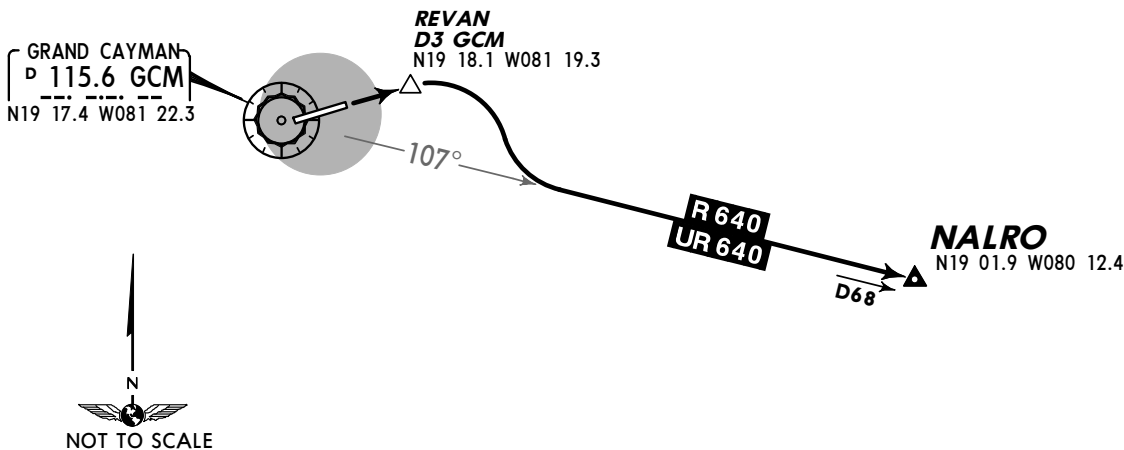
Climb on runway heading to REVAN, then via GCM R-080 to D6 GCM, turn RIGHT and intercept GCM R-116 inbound to GCM. Intercept R/UR-640 route.

Climb to 8000' or flight level/altitude assigned by ATC.

NALRO TWO DEPARTURE

(RWY 08)

SPEED: MAX 250 KT BELOW 10500'



INITIAL CLIMB

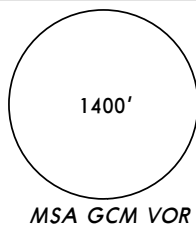
ALTITUDE

Climb on runway heading to REVAN, then turn RIGHT to intercept R/UR-640 route.

Climb to 7000' or flight level/altitude assigned by ATC.

Apt Elev
8'

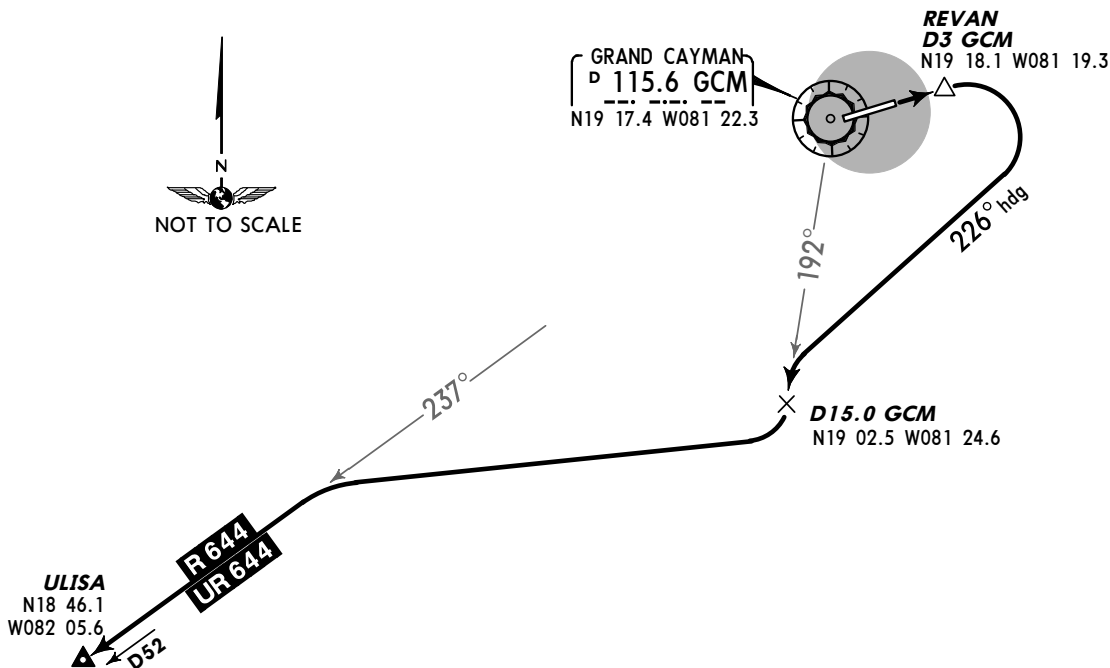
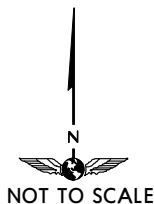
Trans level: FL180 Trans alt: 17000'
VOR/DME required.



RED BAY TWO DEPARTURE

(RWY 08)

SPEED: MAX 250 KT BELOW 10500'



INITIAL CLIMB

Climb on runway heading to REVAN, then turn RIGHT heading 226°, intercept and proceed on GCM R-192 until D15.0 GCM, turn RIGHT to intercept R/UR-644 route.

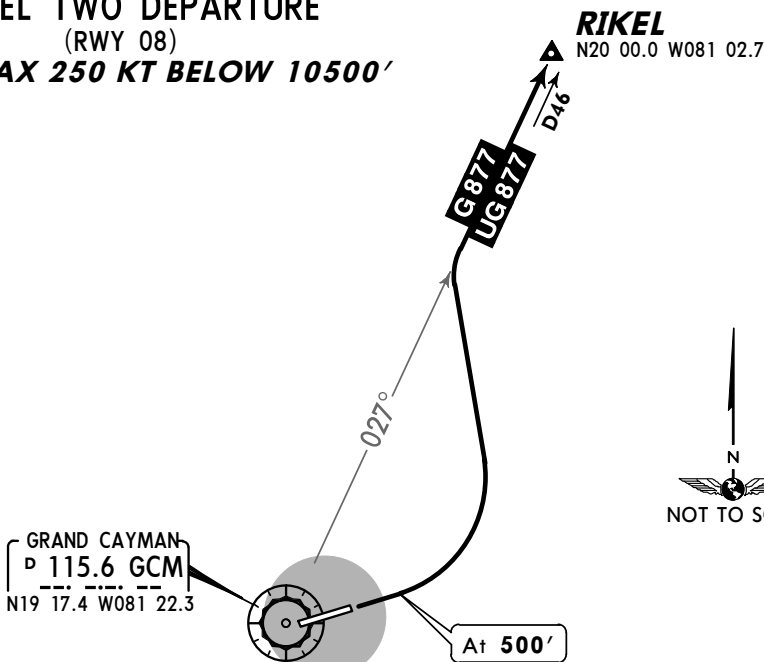
ALTITUDE

Climb to **8000'** or flight level/altitude assigned by ATC.

RIKEL TWO DEPARTURE

(RWY 08)

SPEED: MAX 250 KT BELOW 10500'



INITIAL CLIMB

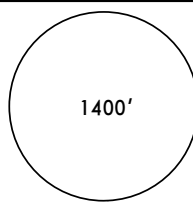
Climb on runway heading to **500'**, then turn LEFT to intercept G/UG-877 route.

ALTITUDE

Climb to **8000'** or flight level/altitude assigned by ATC.

Apt Elev
8'

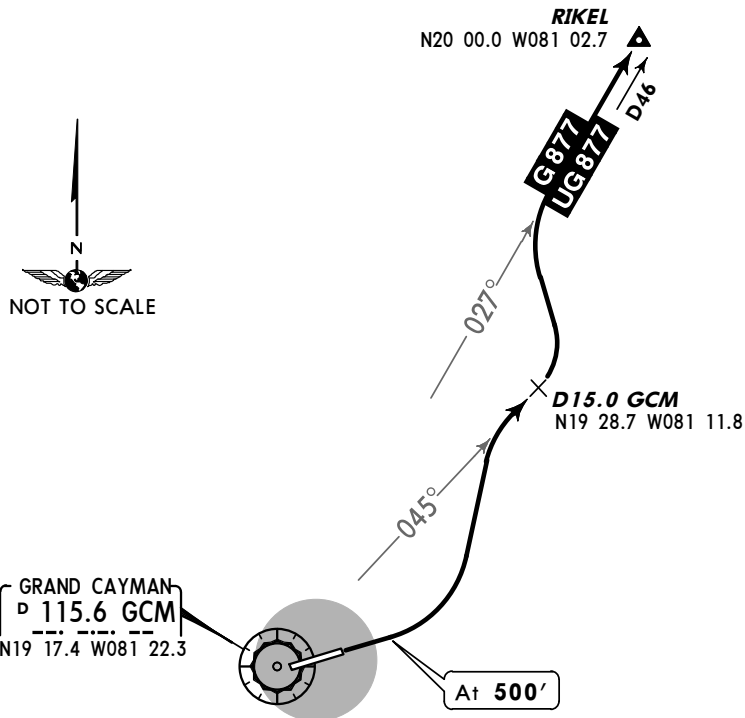
Trans level: FL180 Trans alt: 17000'
VOR/DME required.



STING RAY TWO DEPARTURE

(RWY 08)

SPEED: MAX 250 KT BELOW 10500'



INITIAL CLIMB

ALTITUDE

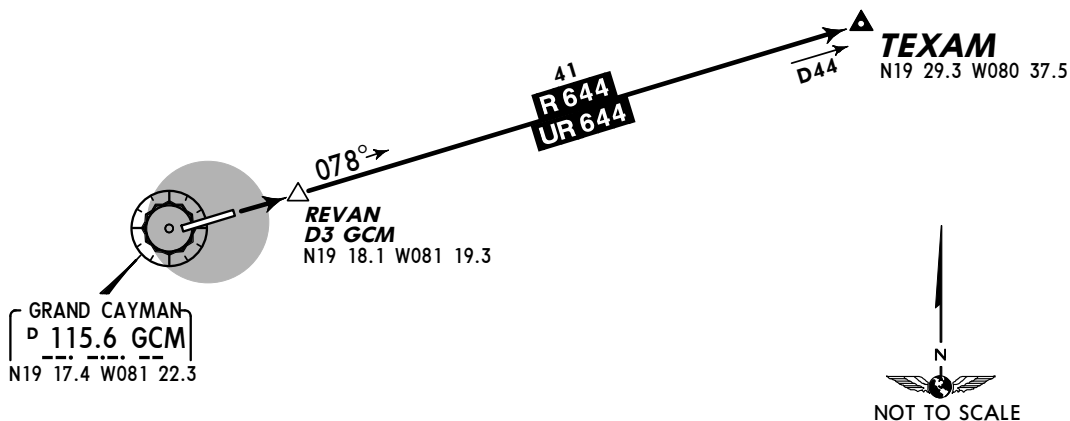
Climb on runway heading to 500', then turn LEFT to intercept and proceed on GCM R-045 until D15.0 GCM, then turn LEFT to intercept G/UG-877 route.

Climb to 8000' or flight level/altitude assigned by ATC.

TEXAM TWO DEPARTURE

(RWY 08)

SPEED: MAX 250 KT BELOW 10500'



INITIAL CLIMB

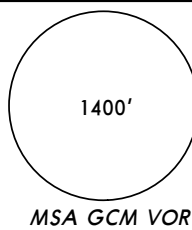
ALTITUDE

Climb on runway heading to REVAN, then intercept R/UR-644 route.

Climb to 5000' or flight level/altitude assigned by ATC.

Apt Elev
8'

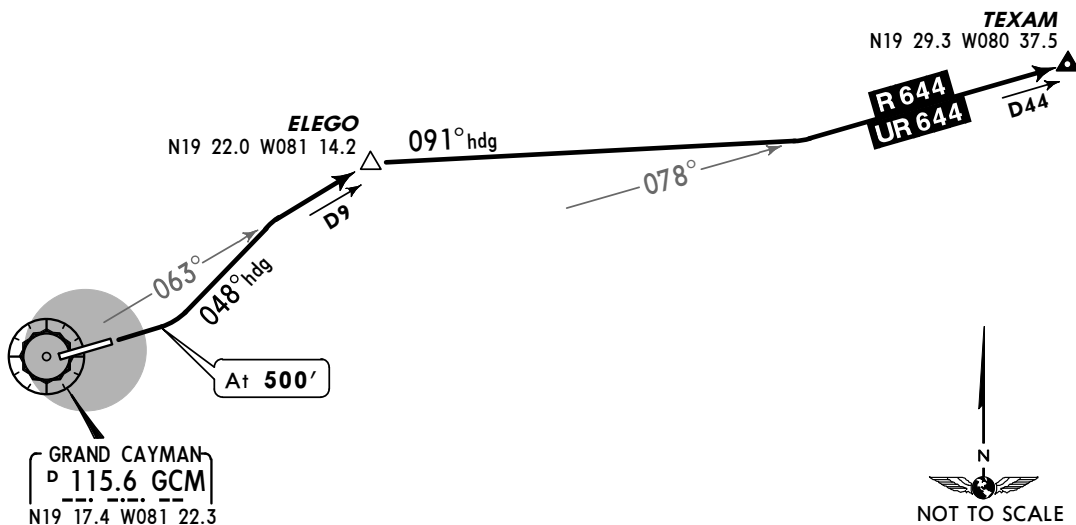
Trans level: FL180 Trans alt: 17000'
VOR/DME required.



TURTUGA TWO DEPARTURE

(RWY 08)

SPEED: MAX 250 KT BELOW 10500'



INITIAL CLIMB

Climb on runway heading to 500', then turn LEFT heading 048° to intercept and proceed on GCM R-063 to ELEGO. Then turn RIGHT heading 091° to intercept R/UR-644 route.

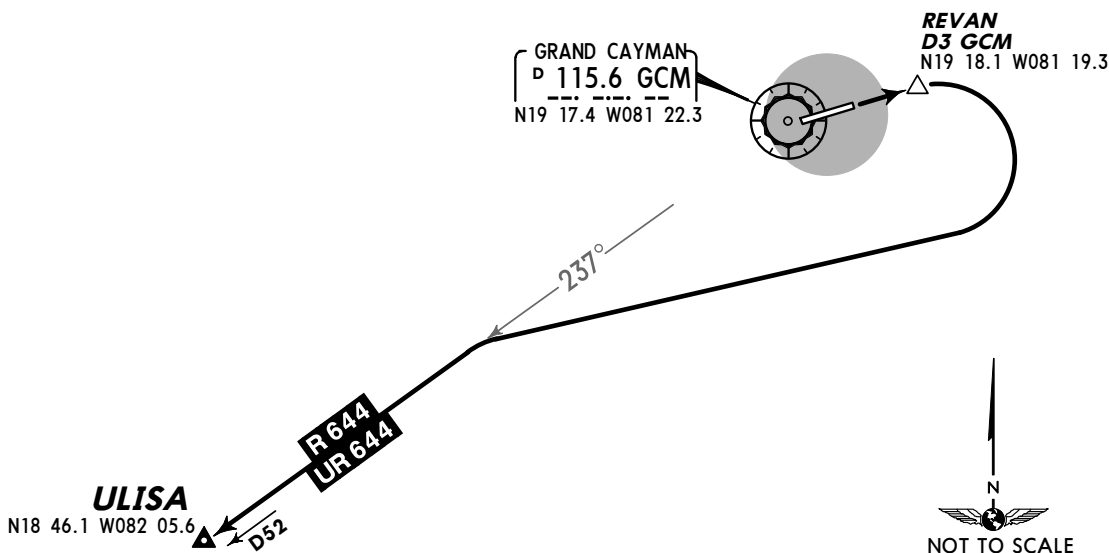
ALTITUDE

Climb to 5000' or flight level/altitude assigned by ATC.

ULISA TWO DEPARTURE

(RWY 08)

SPEED: MAX 250 KT BELOW 10500'



INITIAL CLIMB

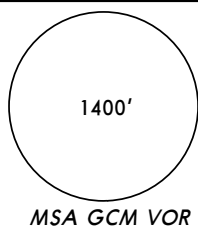
Climb on runway heading to REVAN, then turn RIGHT to intercept R/UR-644 route.

ALTITUDE

Climb to 8000' or flight level/altitude assigned by ATC.

Apt Elev
8'

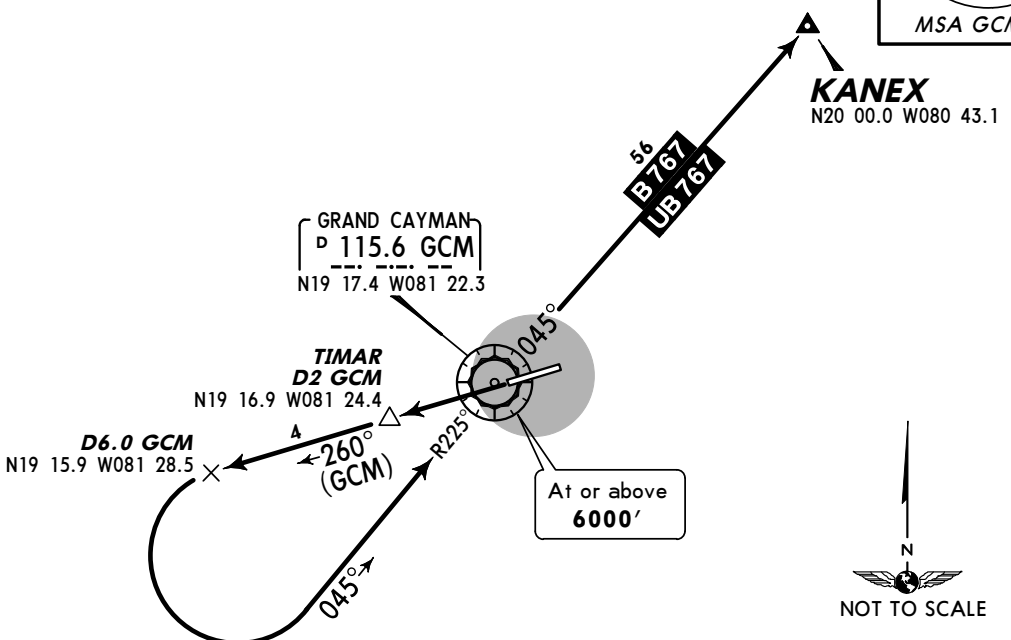
Trans level: FL180 Trans alt: 17000'
VOR/DME required.



KANEX TWO DEPARTURE

(RWY 26)

SPEED: MAX 250 KT BELOW 10500'



INITIAL CLIMB

Climb on runway heading to TIMAR, then via GCM R-260 to D6.0 GCM, turn LEFT and intercept GCM R-225 inbound to GCM. Intercept B/UB-767 route.

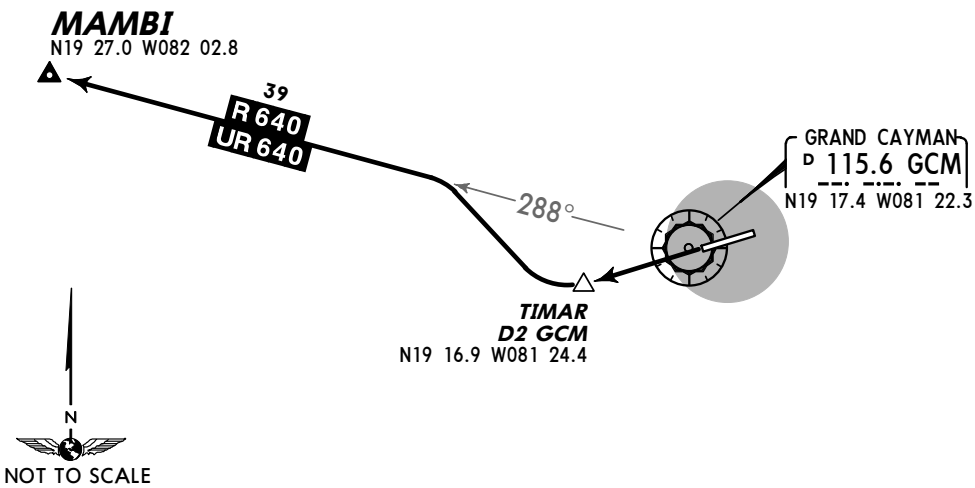
ALTITUDE

Climb to **8000'** or flight level/altitude assigned by ATC.

MAMBI TWO DEPARTURE

(RWY 26)

SPEED: MAX 250 KT BELOW 10500'



INITIAL CLIMB

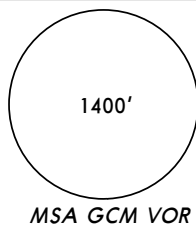
Climb on runway heading to TIMAR, then turn RIGHT to intercept R/UR-640 route.

ALTITUDE

Climb to **8000'** or flight level/altitude assigned by ATC.

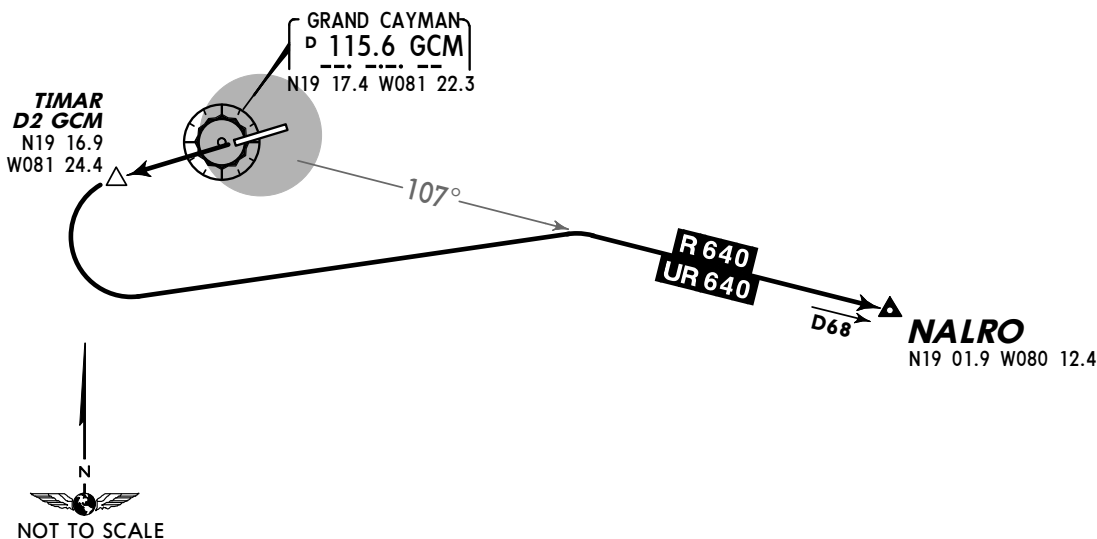
Apt Elev
8'

Trans level: FL180 Trans alt: 17000'
VOR/DME required.



NALRO TWO DEPARTURE
(RWY 26)

SPEED: MAX 250 KT BELOW 10500'



INITIAL CLIMB

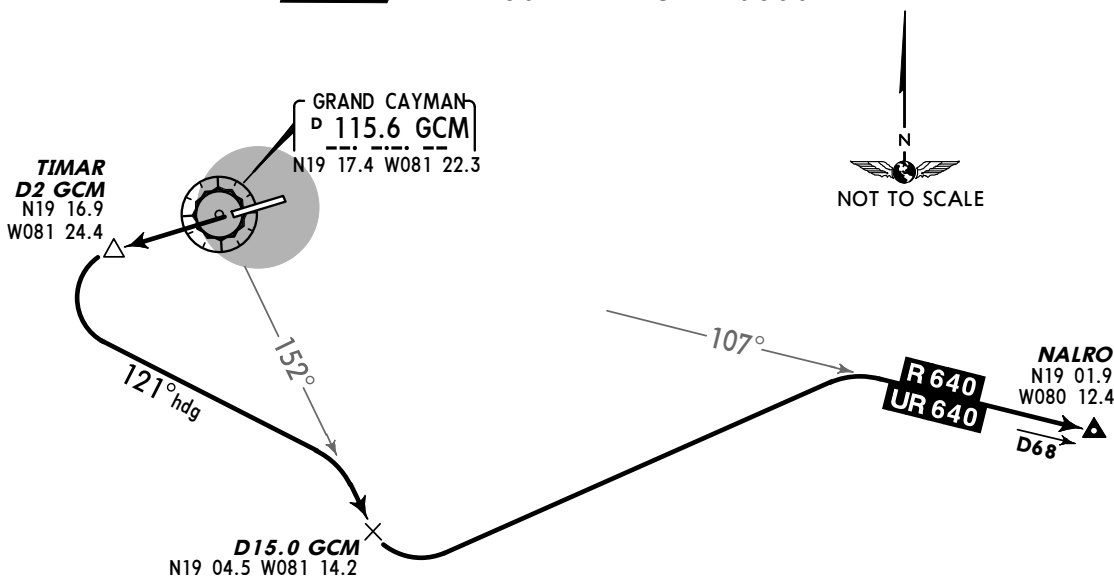
ALTITUDE

Climb on runway heading to TIMAR, then turn LEFT to intercept R/UR-640 route.

Climb to **7000'** or flight level/altitude assigned by ATC.

SEAVIEW TWO DEPARTURE
(RWY 26)

SPEED: MAX 250 KT BELOW 10500'



INITIAL CLIMB

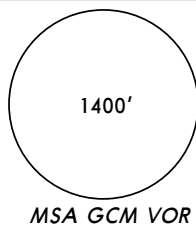
ALTITUDE

Climb on runway heading to TIMAR, then turn LEFT heading 121° to intercept and proceed on GCM R-152 until D15.0 GCM, then turn LEFT to intercept R/UR-640 route.

Climb to **7000'** or flight level/altitude assigned by ATC.

Apt Elev
8'

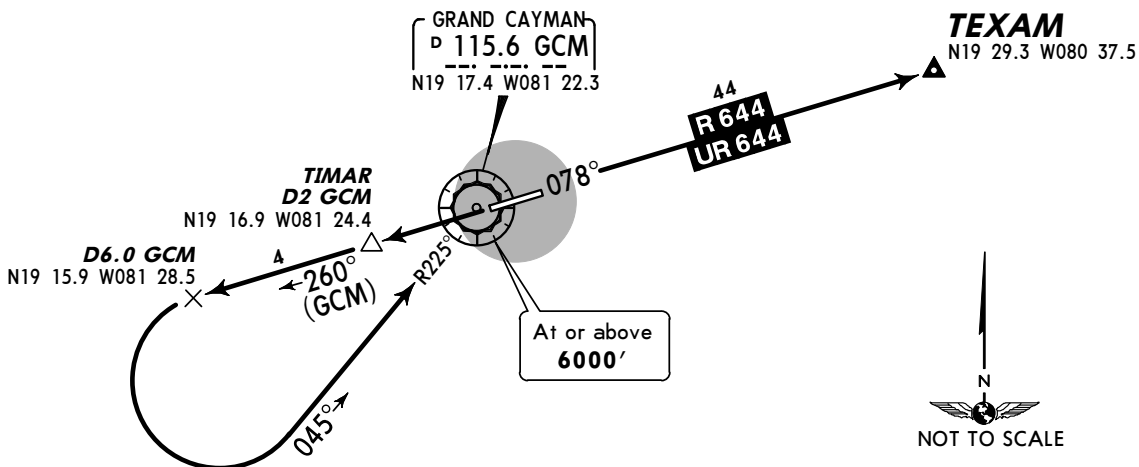
Trans level: FL180 Trans alt: 17000'
VOR/DME required.



TEXAM TWO DEPARTURE

(RWY 26)

SPEED: MAX 250 KT BELOW 10500'



INITIAL CLIMB

Climb on runway heading to TIMAR, then via GCM R-260 to D6.0 GCM, turn LEFT and intercept GCM R-225 inbound to GCM. Intercept R/UR-644 route.

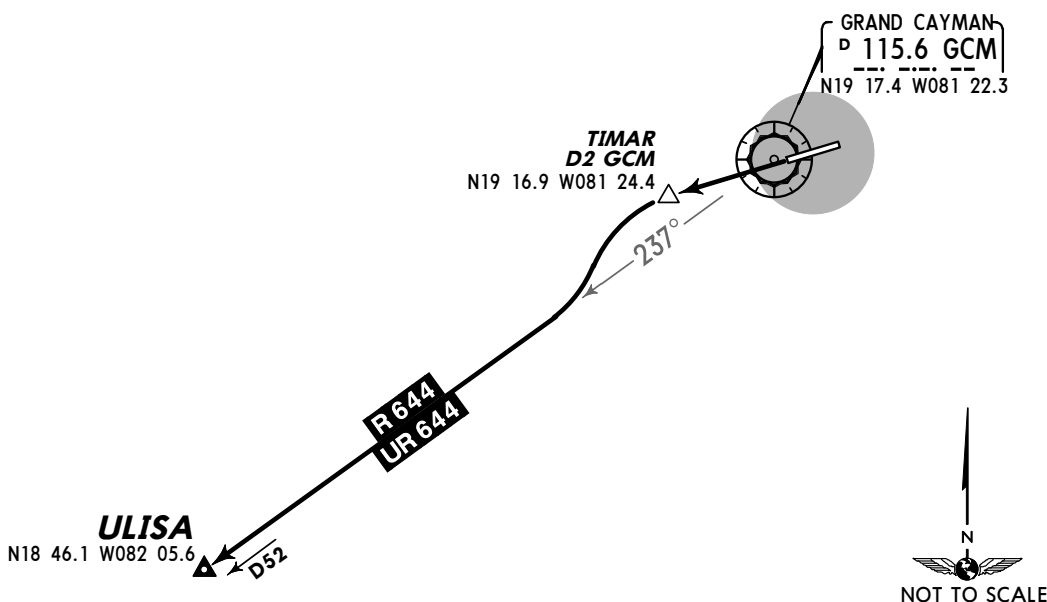
ALTITUDE

Climb to 7000' or flight level/altitude assigned by ATC.

ULISA TWO DEPARTURE

(RWY 26)

SPEED: MAX 250 KT BELOW 10500'

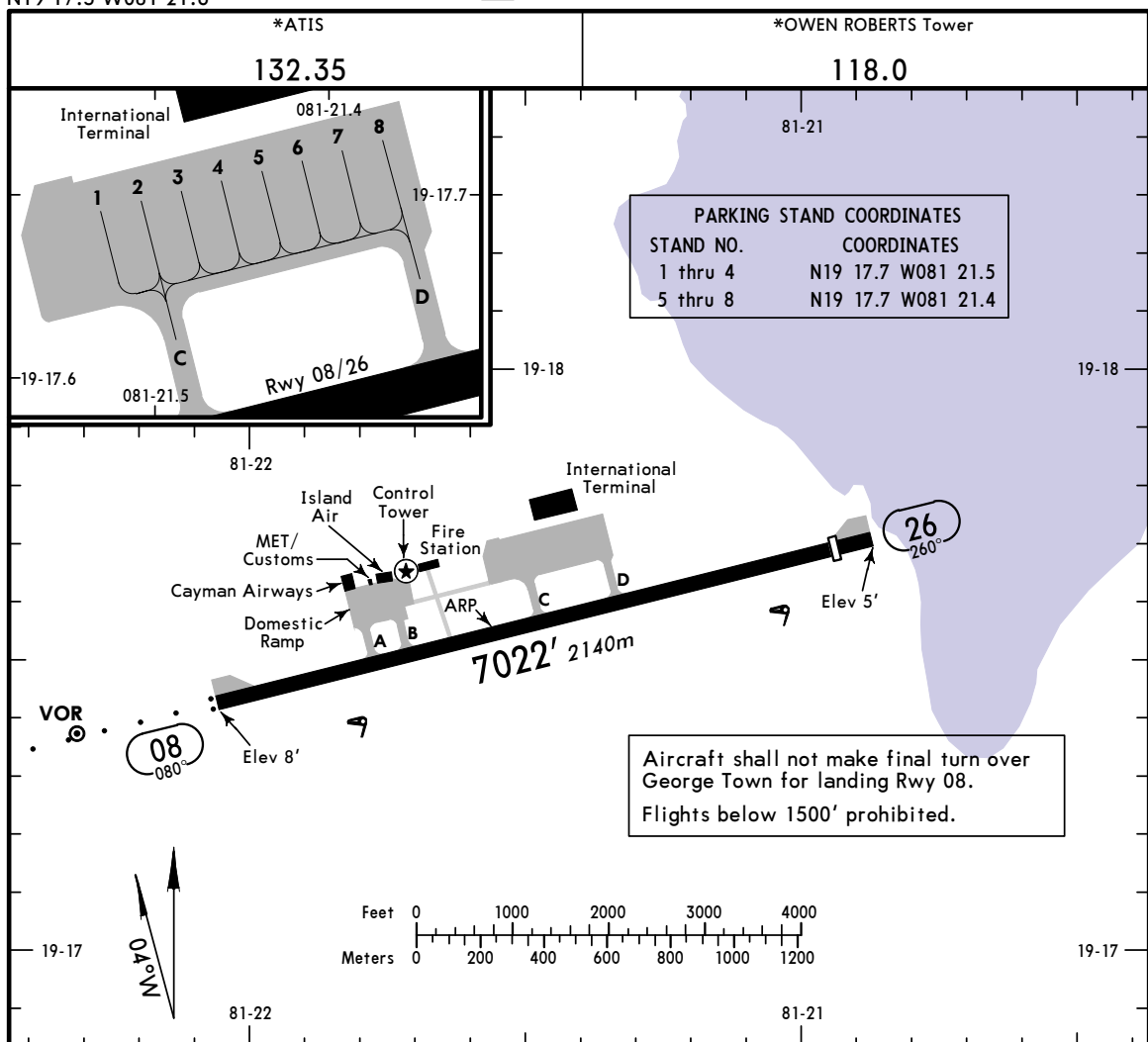


INITIAL CLIMB

Climb on runway heading to TIMAR, then turn LEFT to intercept R/UR-644 route.

ALTITUDE

Climb to 8000' or flight level/altitude assigned by ATC.



Aircraft shall not make final turn over George Town for landing Rwy 08.
Flights below 1500' prohibited.

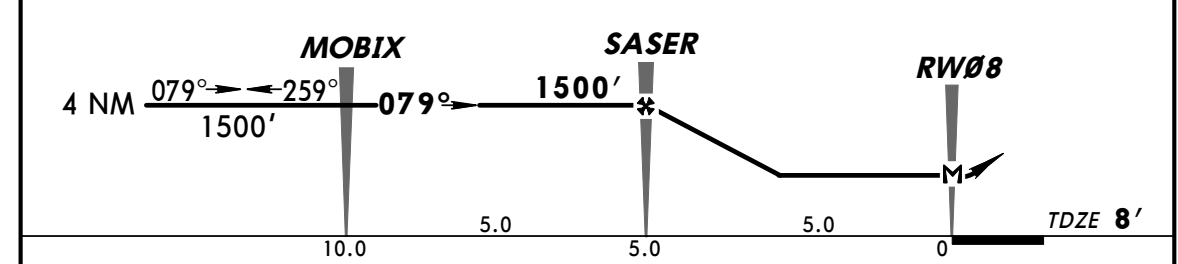
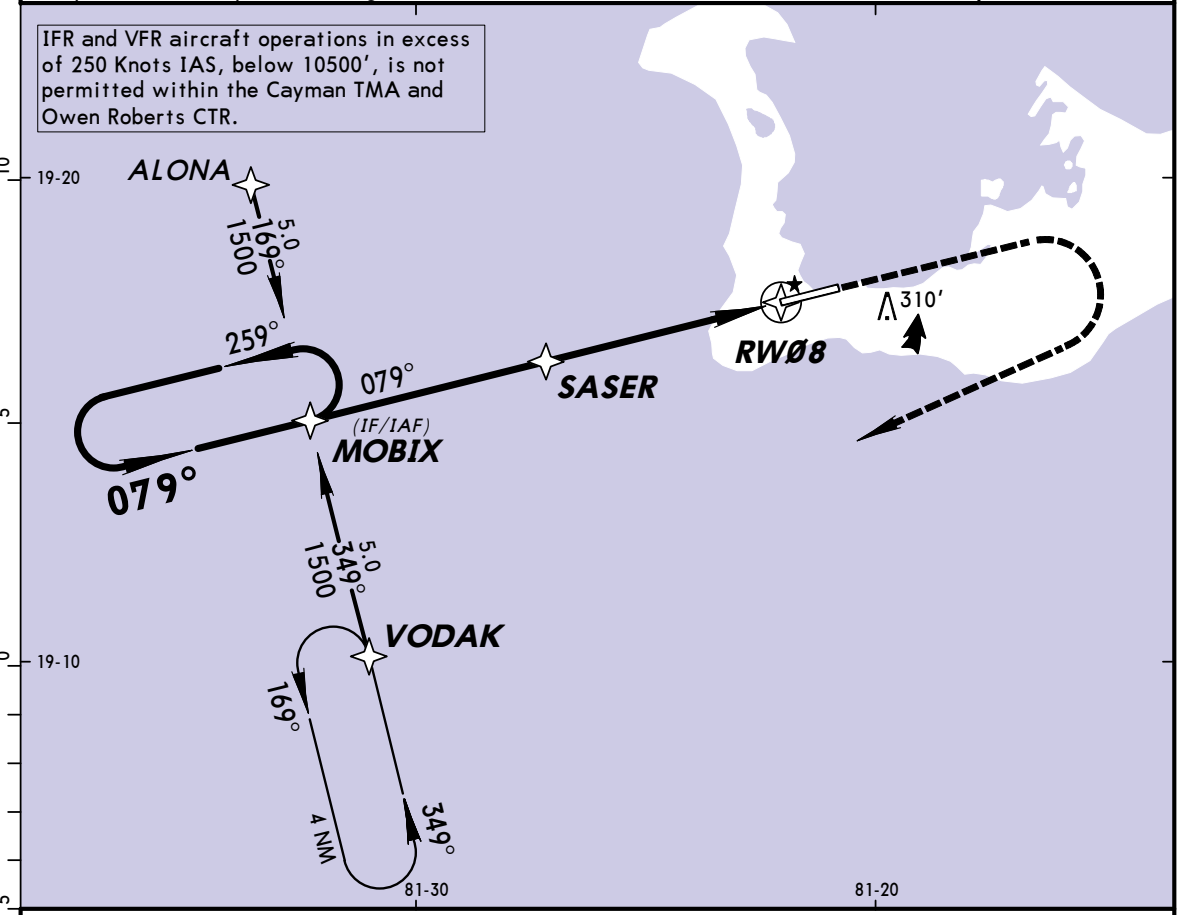


RWY	SURFACE	MARKINGS	USABLE LENGTHS	WIDTH
08	RL ODALS REIL	PAPI-L (angle 3.0°)	grooved	148' 45m
26	RL REIL	PAPI-L (angle 3.0°)	grooved	

TAKE-OFF			
AIR CARRIER		AIR CARRIER (FAR 121)	
LVP must be in Force All Rwys RCLM (DAY only) or RL	All Rwys RCLM (DAY only) or RL	All Rwys Adequate Vis Ref	
A	250m	400m	2 Eng
B			400m
C			
D			

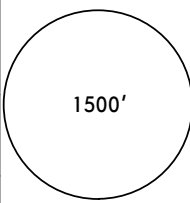
*ATIS 132.35		*GRAND CAYMAN Approach 120.2		*OWEN ROBERTS Tower 118.0	
RNAV	Final Apch Crs 079°	Minimum Alt SASER 1500' (1492')	LNAV MDA(H) 400' (392')	Apt Elev 8'	1500' MSA RW08
MISSED APCH: Climb to 1500'. Right turn to VODAK and hold or as directed by ATC.					
Alt Set: hPa and INCHES TDZ Elev: 0 hPa Trans level: FL 180 Trans alt: 17000' 1. SAFE ALTITUDE WITHIN 100 NM 1500'. 2. Flight below 1500' within 2000' of coast line prohibited except for landing and take off.					

IFR and VFR aircraft operations in excess of 250 Knots IAS, below 10500', is not permitted within the Cayman TMA and Owen Roberts CTR.

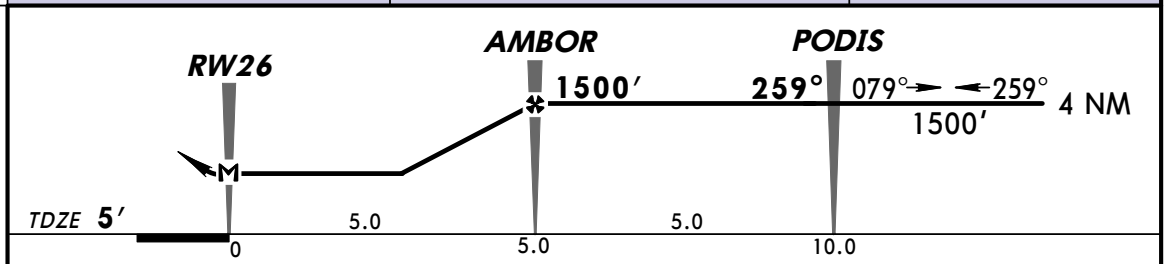
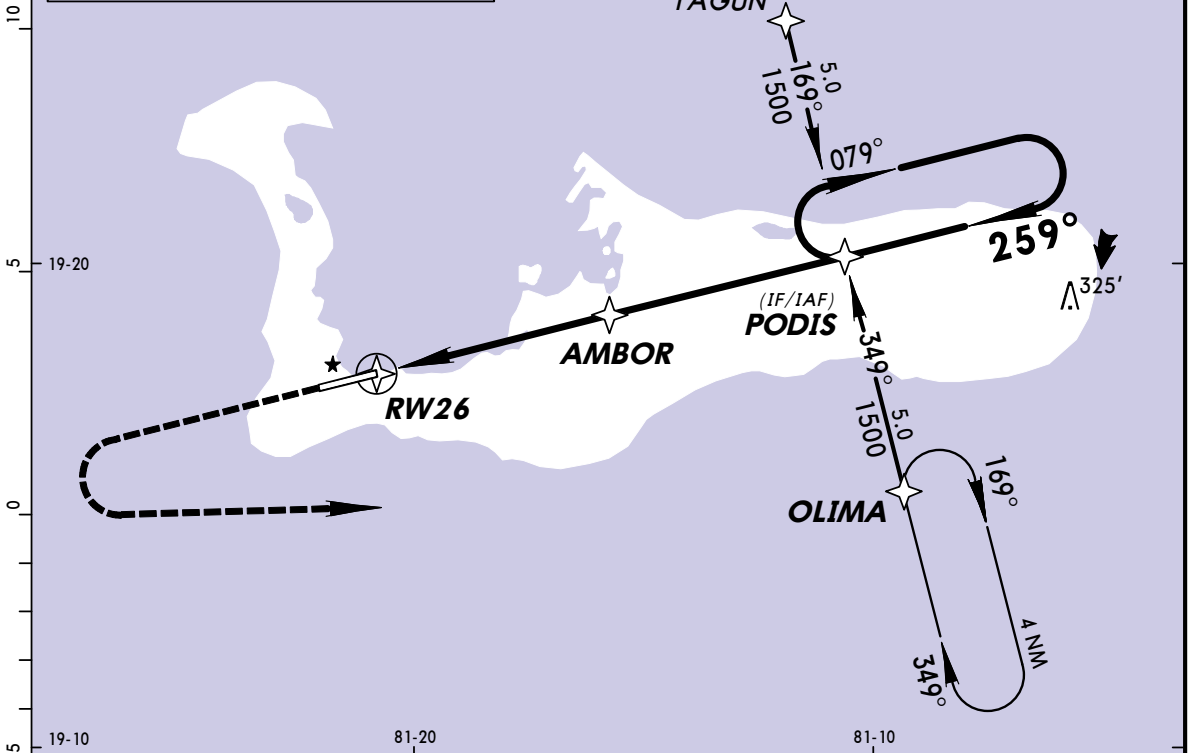


MAP at RW08					ODALS	REIL	1500'	PAPI	RT	VODAK
-------------	--	--	--	--	-------	------	-------	------	----	-------

STRAIGHT-IN LANDING RWY 08					CIRCLE-TO-LAND				
LNAV					Max Kts				
MDA(H) 400' (392')					MDA(H)				
ODALS out					1 1/4				
A					90	540' (532') - 1 3/4			
B					120	540' (532') - 2			
C					140	540' (532') - 2			
D					165	620' (612') - 2			

*ATIS 132.35		*GRAND CAYMAN Approach 120.2		*OWEN ROBERTS Tower 118.0	
RNAV	Final Apch Crs 259°	Minimum Alt AMBOR 1500' (1495')	LNAV MDA(H) 400' (395')	Apt Elev 8'	 MSA RW26
MISSED APCH: Climb to 1500'. LEFT turn to OLIMA and hold, or as directed by ATC.					
Alt Set: hPa and INCHES TDZ Elev: 0 hPa Trans level: FL 180 Trans alt: 17000' 1. MINIMUM SAFE ALTITUDE WITHIN 100 NM 1500'. 2. Flight below 1500' within 2000' of coast line prohibited except for landing and take-off.					

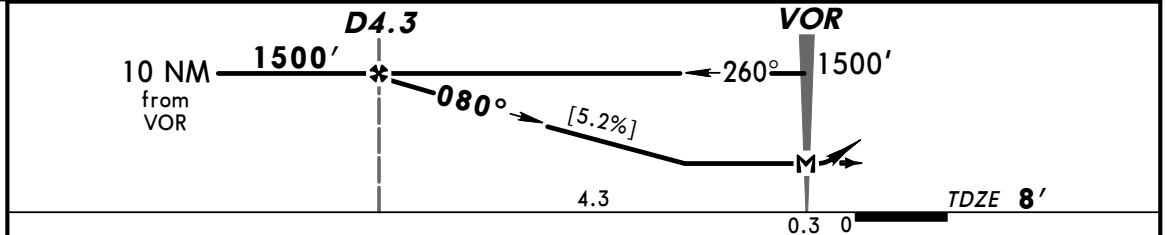
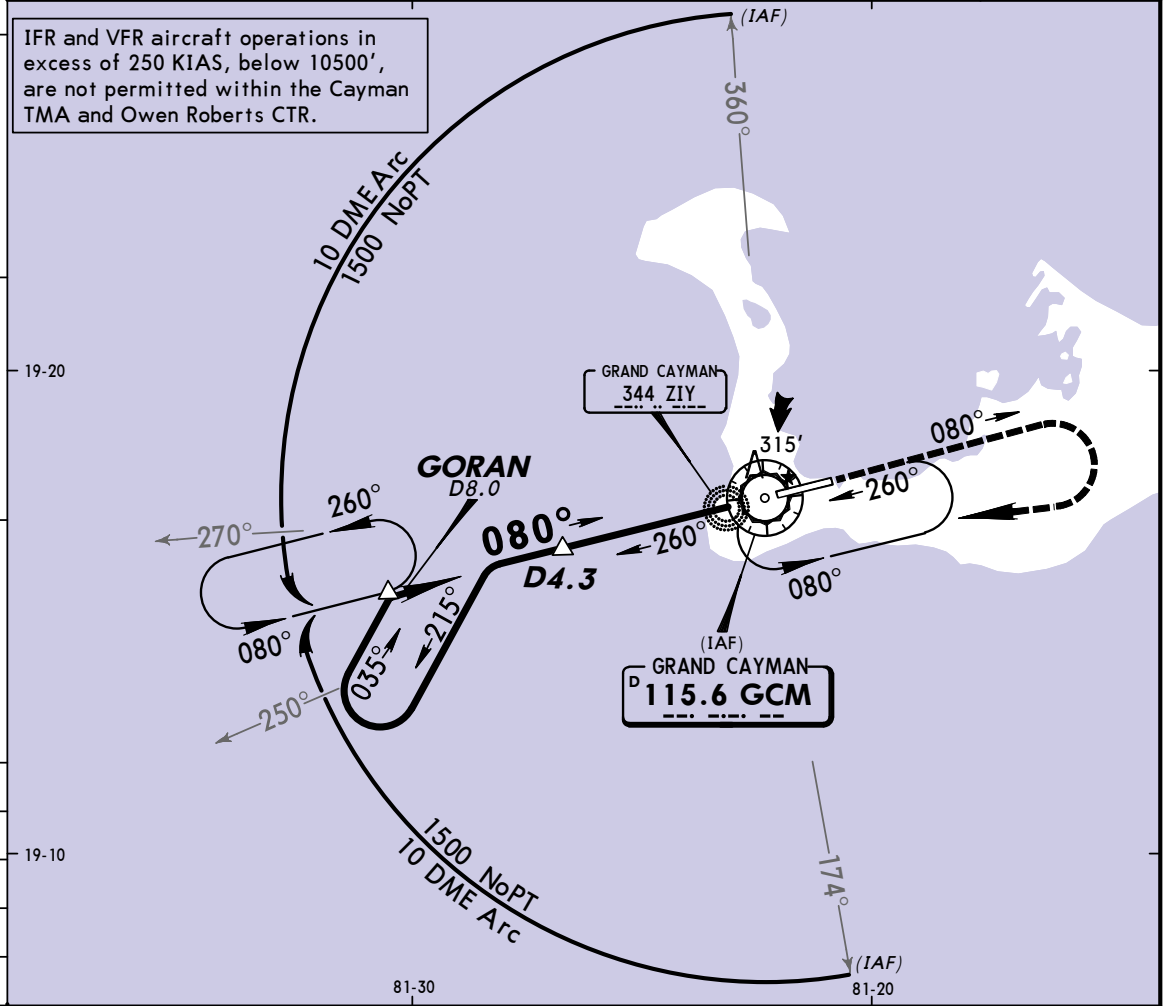
IFR and VFR aircraft operations in excess of 250 Knots IAS, below 10500', is not permitted within the Cayman TMA and Owen Roberts CTR.



MAP at RW26				REIL	1500'	←	OLIMA
				PAPI-L	↑	LT	

STRAIGHT-IN LANDING RWY 26		CIRCLE-TO-LAND	
LNAV		Max Kts	
MDA(H) 400' (395')		MDA(H)	
A		90	540' (532') - 1 3/4
B		120	540' (532') - 2
C	1 1/4	140	540' (532') - 2
D		165	620' (612') - 2

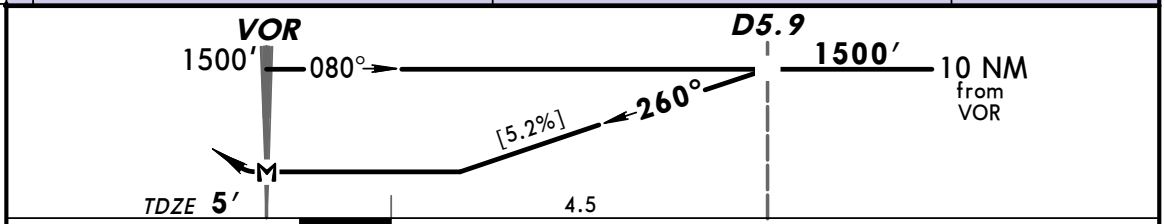
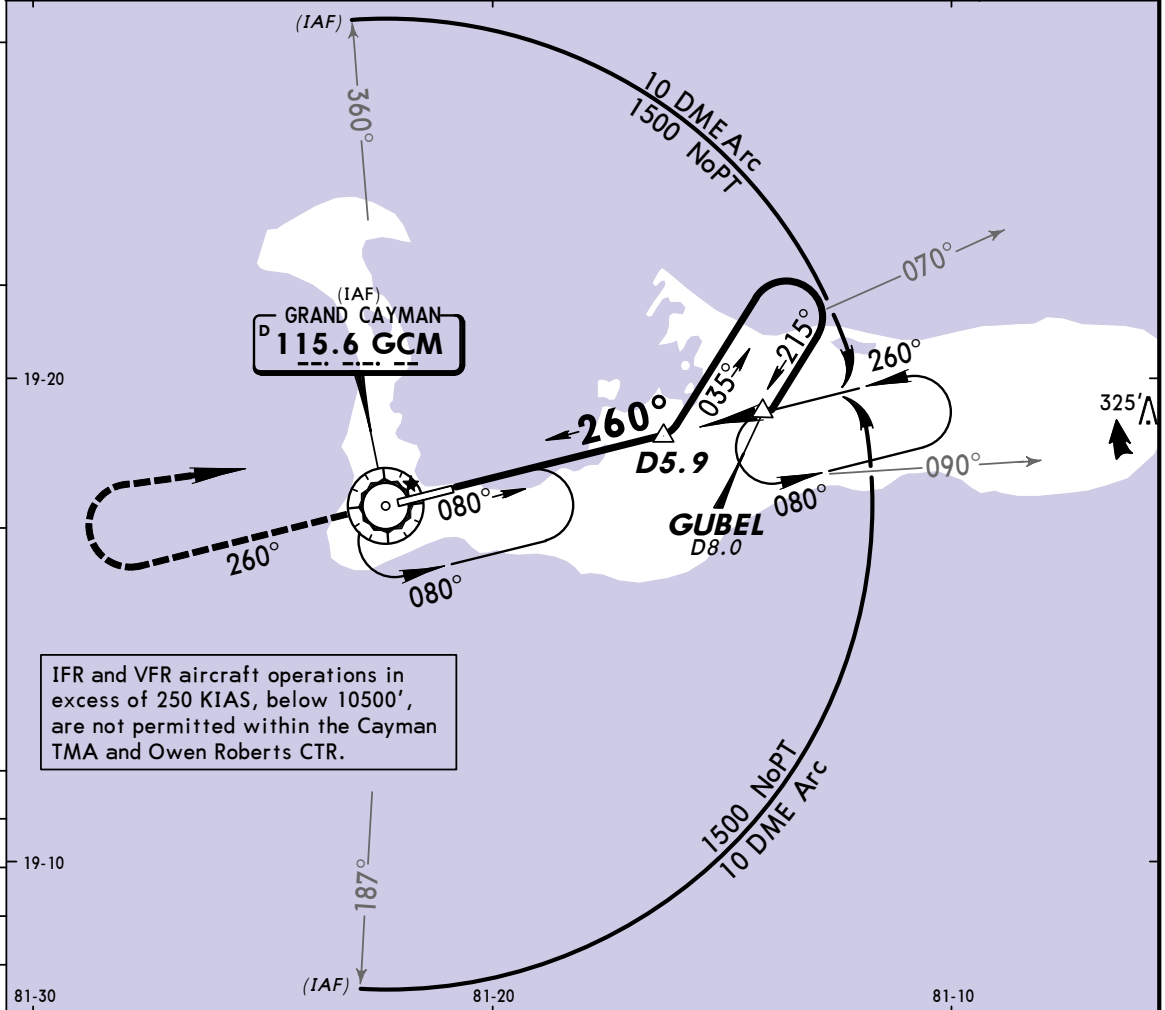
*ATIS 132.35		*GRAND CAYMAN Approach 120.2		*OWEN ROBERTS Tower 118.0	
VOR GCM 115.6	Final Apch Crs 080°	Minimum Alt D4.3 1500' (1492')	MDA(H) (CONDITIONAL) 520' (512')	Apt Elev 8' TDZE 8'	1400'
MISSED APCH: Climb outbound on GCM VOR R-080 to 1500', then: with DME: turn RIGHT to GORAN D8.0 and hold. without DME: turn RIGHT to GCM VOR and hold inbound on R-080, left turns.					
Alt Set: hPa and INCHES			TDZ Elev: 0 hPa	Trans level: FL 180	Trans alt: 17000'
					MSA GCM VOR



Gnd speed-Kts	70	90	100	120	140	160	ODALS REIL PAPI 1500' GCM on 115.6 R-080
Descent Gradient 5.2%	369	474	527	632	737	843	
MAP at VOR							

STRAIGHT-IN LANDING RWY 08				CIRCLE-TO-LAND			
MDA(H) 520' (512') With D4.3		MDA(H) 560' (552') Without D4.3					
ODALS out		ODALS out					
A	1 NM		1 NM		A		NA
B					B		
C	1½ NM		1½ NM		C		
D	1¾ NM		1¾ NM		D		

*ATIS 132.35		*GRAND CAYMAN Approach 120.2		*OWEN ROBERTS Tower 118.0	
VOR GCM 115.6	Final Apch Crs 260°	Minimum Alt D5.9 1500' (1495')	MDA(H) (CONDITIONAL) 520' (515')	Apt Elev 8' TDZE 5'	1400'
MISSED APCH: Climb outbound on GCM VOR R-260 to 1500', then: with DME: turn RIGHT to GUBEL D8.0 and hold. without DME: turn RIGHT to GCM VOR and hold inbound on R-080, left turns.					
Alt Set: hPa and INCHES			TDZ Elev: 0 hPa	Trans level: FL 180	Trans alt: 17000'

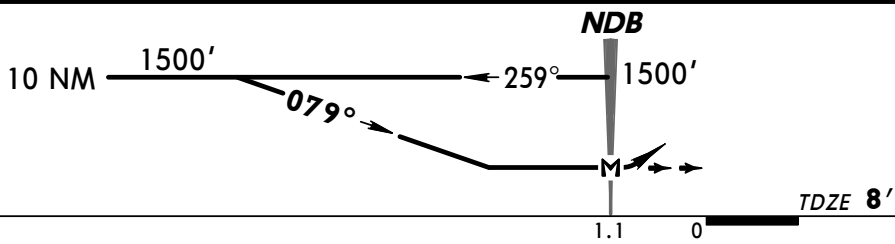
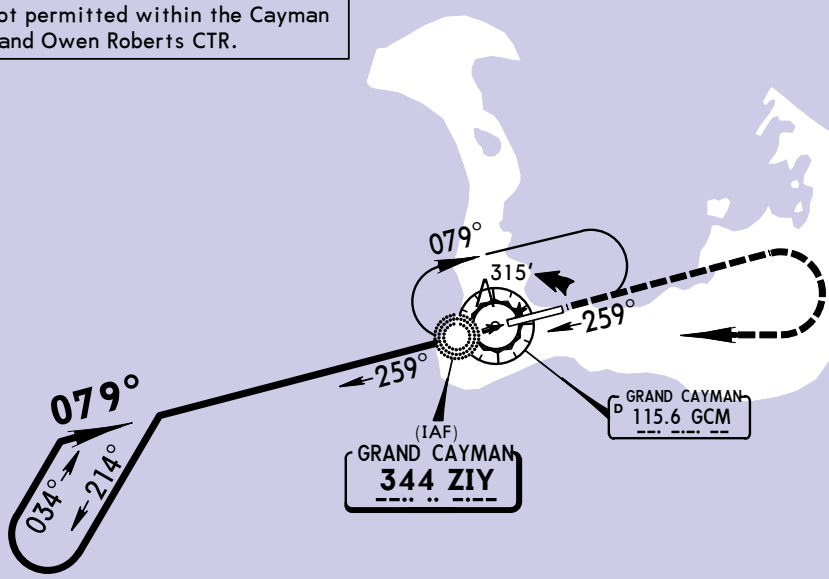


Gnd speed-Kts	70	90	100	120	140	160	REIL PAPI-L	1500' GCM on 115.6 R-260
Descent Gradient 5.2%	369	474	527	632	737	843		
MAP at VOR								

STRAIGHT-IN LANDING RWY 26				CIRCLE-TO-LAND			
MDA(H) 520' (515') With D5.9		MDA(H) 560' (555') Without D5.9					
A	1 NM			A	NA		
B				B			
C	1½ NM			C			
D	1¾ NM			D			

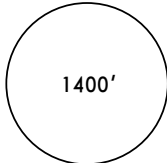
*ATIS 132.35		*GRAND CAYMAN Approach 120.2		*OWEN ROBERTS Tower 118.0	
NDB Ziy 344	Final Apch Crs 079°	No FAF	MDA(H) 610' (602')	Apt Elev 8' TDZE 8'	1400'
MISSED APCH: Climb on Rwy heading to 1500', then RIGHT turn direct Ziy NDB and hold, or as directed by ATC.					
Alt Set: hPa and INCHES TDZ Elev: 0 hPa Trans level: FL 180 Trans alt: 17000'					MSA Ziy NDB

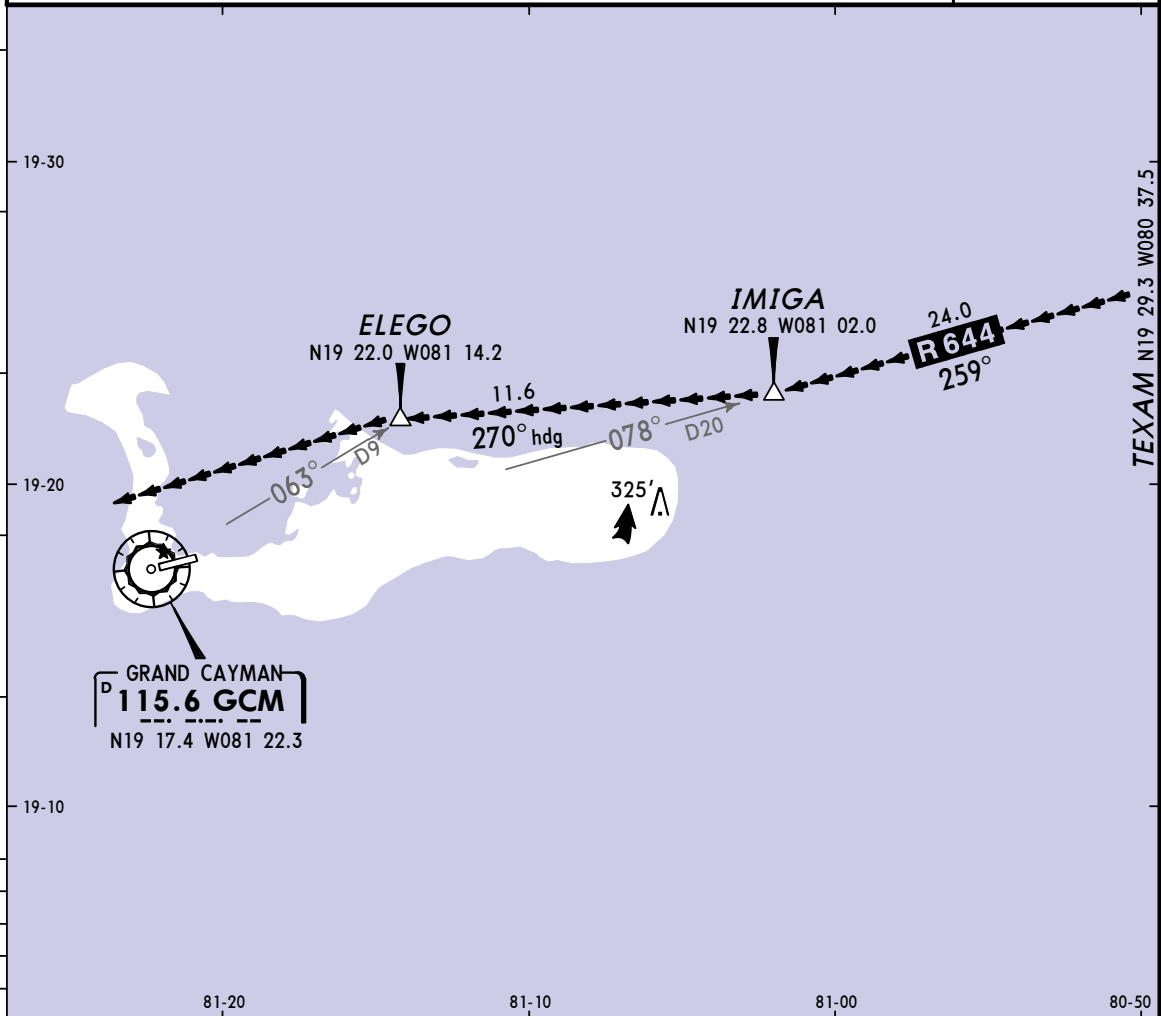
IFR and VFR aircraft operations in excess of 250 KIAS, below 10500', are not permitted within the Cayman TMA and Owen Roberts CTR.



					ODALS	1500'	Rwy hdg
					REIL		
MAP at NDB					PAPI		

STRAIGHT-IN LANDING RWY 08				CIRCLE-TO-LAND			
MDA(H) 610' (602')							
ODALS out							
A	1 1/4 NM			A	NA		
B				B			
C				C			
D	1 3/4 NM			D			

*ATIS 132.35		*GRAND CAYMAN Approach 120.2		*OWEN ROBERTS Tower 118.0	
Visual	Final Apch Crs Refer to Planview	No FAF	No Minimums	Apt Elev 8' TDZE 8'	 1400'
MISSED APCH: No Missed Approach procedure.					
Alt Set: hPa and INCHES TDZ Elev: 0 hPa Trans level: FL 180 Trans alt: 17000'					



NORTH SIDE VISUAL APPROACH

RUNWAY 08

From TEXAM without RNAV:

Via GCM R-078 inbound to IMIGA Int, then turn RIGHT heading 270° to ELEGO Int, then join left downwind Rwy 08.

From TEXAM with RNAV:

Via GCM R-078 inbound to IMIGA Int, then turn RIGHT direct ELEGO Int, then join left downwind Rwy 08.

*ATIS
132.35

*GRAND CAYMAN Approach
120.2

*OWEN ROBERTS Tower
118.0

Visual

Final
Apch Crs
Refer to
Planview

No FAF

No Minimums

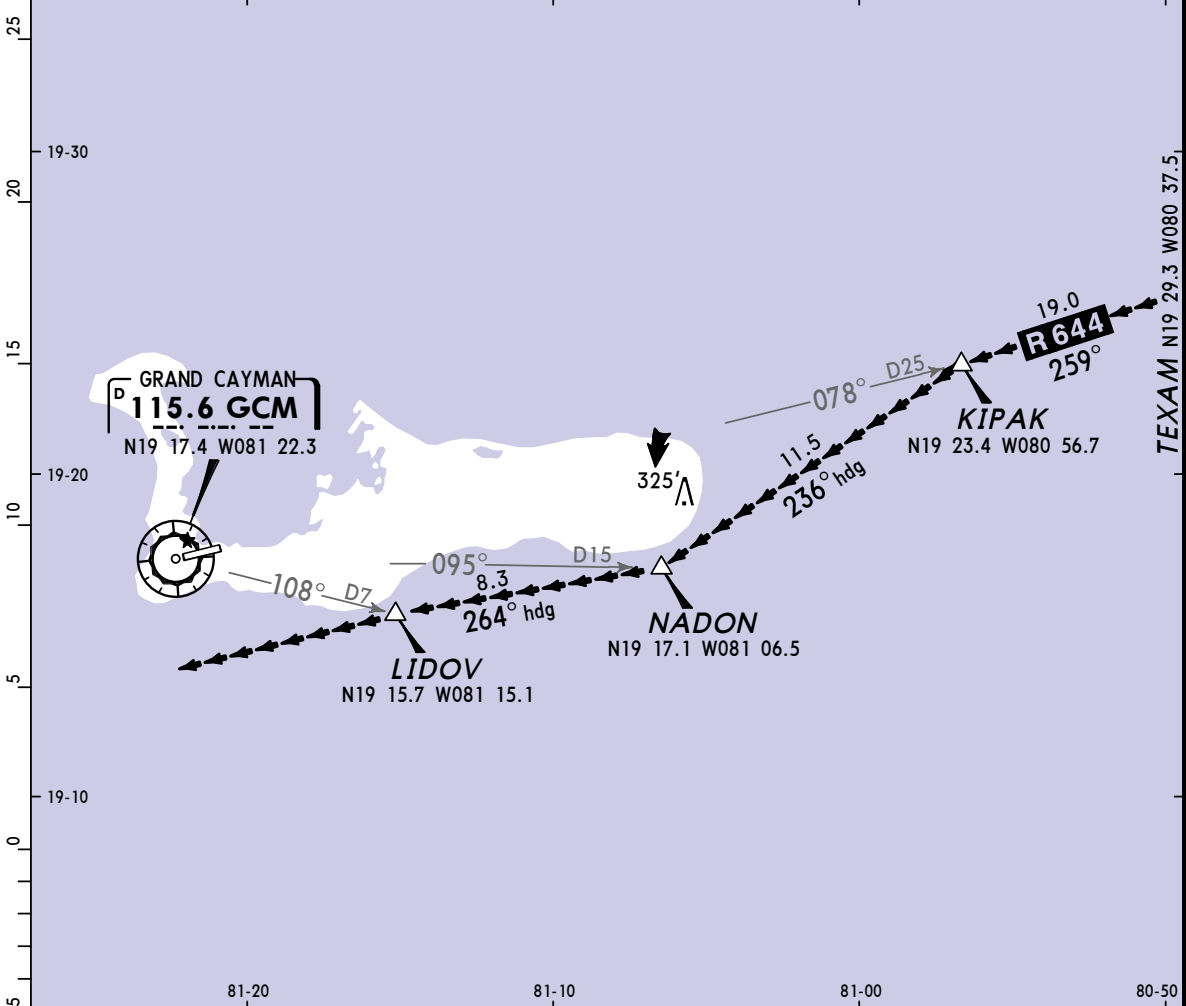
Apt Elev 8'
TDZE 8'

1400'

MISSED APCH: No Missed Approach procedure.

Alt Set: hPa and INCHES TDZ Elev: 0 hPa Trans level: FL 180 Trans alt: 17000'

MSA GCM VOR



SOUTH SIDE VISUAL APPROACH

RUNWAY 08

From TEXAM without RNAV:

Via GCM R-078 inbound to KIPAK Int, then turn LEFT heading 236° to NADON Int, then turn RIGHT heading 264° to LIDOV Int, then join right downwind Rwy 08.

From TEXAM with RNAV:

Via GCM R-078 inbound to KIPAK Int, then turn LEFT direct NADON Int, then turn RIGHT direct LIDOV Int, then join right downwind Rwy 08.