

General Info

, PHL

N 15° 11' 09.6 E 120° 33' 37.2 Magnetic Variation: 1.4°W

Elevation: 484'

Public, Control Tower, IFR, No Fee, Rotating Beacon, No Customs

Fuel: Jet A-1

Time Zone Info: GMT+8:00 no DST

Runway Info

Runway 02L-20R 10499' x 170' concrete

Runway 02R-20L 10499' x 197' concrete

Runway 02L (22.0°M) TDZE 484'

Right Traffic

Stopway Distance 984'

Runway 02R (22.0°M) TDZE 466'

Lights: Edge, ALS, Centerline

Right Traffic

Stopway Distance 984'

Runway 20L (202.0°M) TDZE 411'

Lights: Edge, ALS, Centerline

Stopway Distance 984'

Runway 20R (202.0°M) TDZE 432'

Stopway Distance 984'

Communications Info

Clark Tower **124.3** Secondary

Clark Tower **118.7**

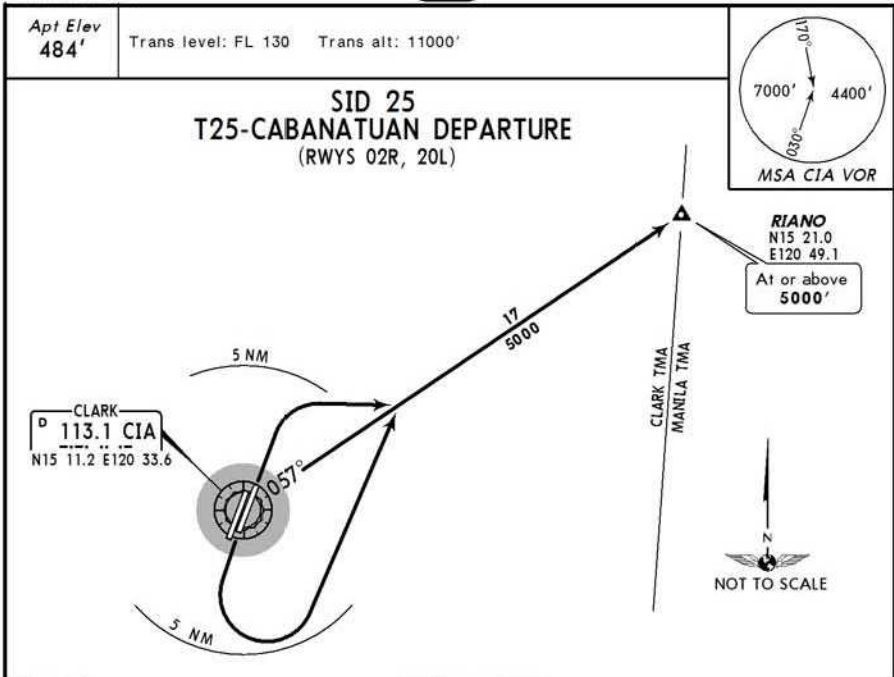
Clark Intl Clearance Delivery **125.2**

Clark App Approach Control **119.2**

Clark Flight Service Station **54.475**

Clark Flight Service Station **113.1**

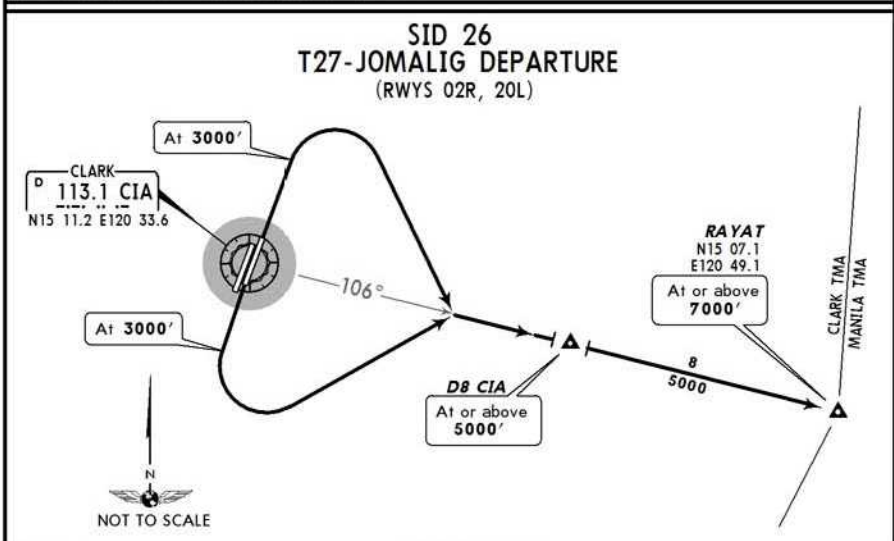
Notebook Info



RWY	INITIAL CLIMB
02R	RIGHT turn within 5 NM.
20L	LEFT turn within 5 NM.

ROUTING

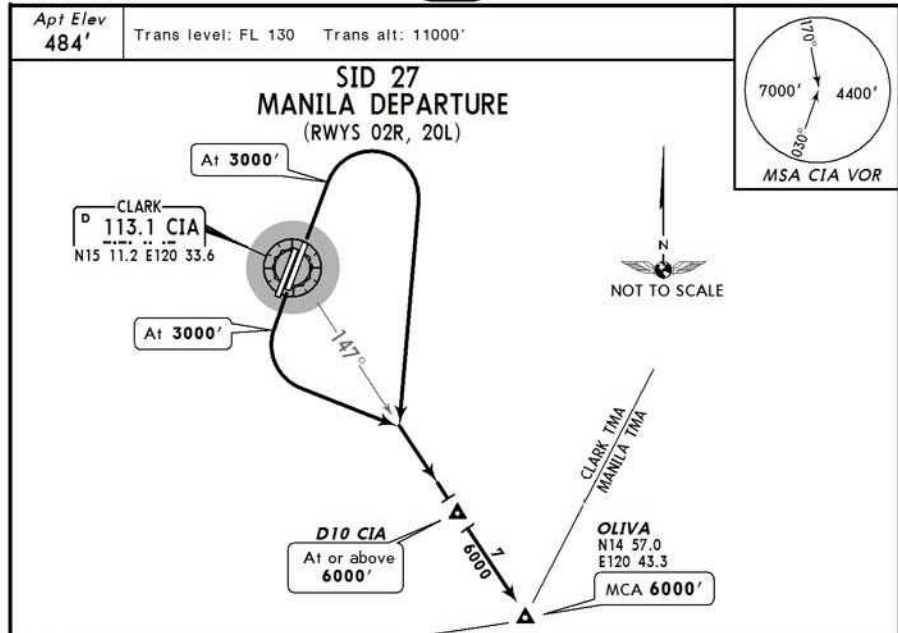
Intercept and track-out on CIA R-057 to RIANO.



RWY	INITIAL CLIMB
02R	Straight out departure to 3000', then RIGHT climbing turn.
20L	Straight out departure to 3000', then LEFT climbing turn.

ROUTING

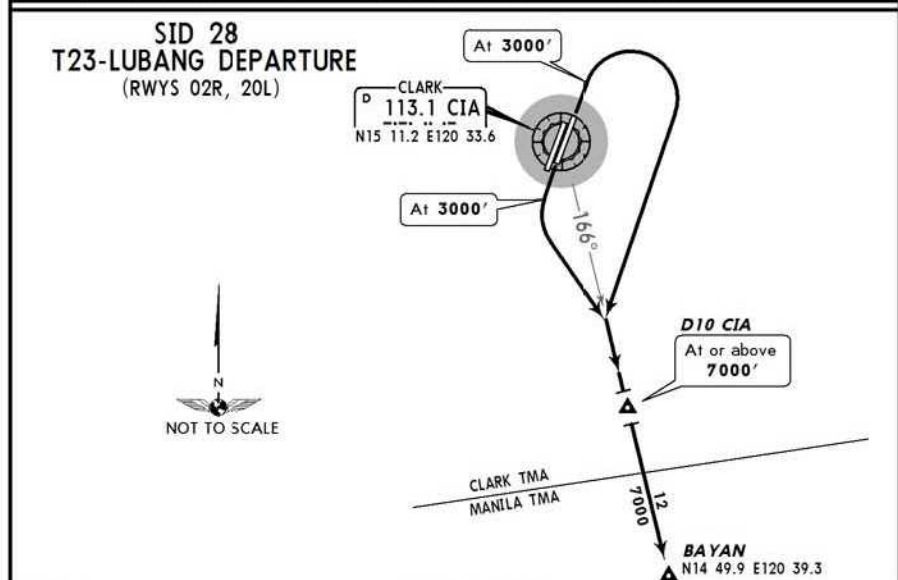
Intercept and track-out on CIA R-106 to D8 CIA. Continue climb to RAYAT.



RWY	INITIAL CLIMB
02R	Straight out departure to 3000', then RIGHT climbing turn.
20L	Straight out departure to 3000', then LEFT climbing turn.

ROUTING

Intercept and track-out on CIA R-147 to D10 CIA. Continue climb to OLIVA.

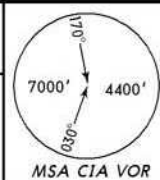


RWY	INITIAL CLIMB
02R	Straight out departure to 3000', then RIGHT climbing turn.
20L	Straight out departure to 3000', then LEFT climbing turn.

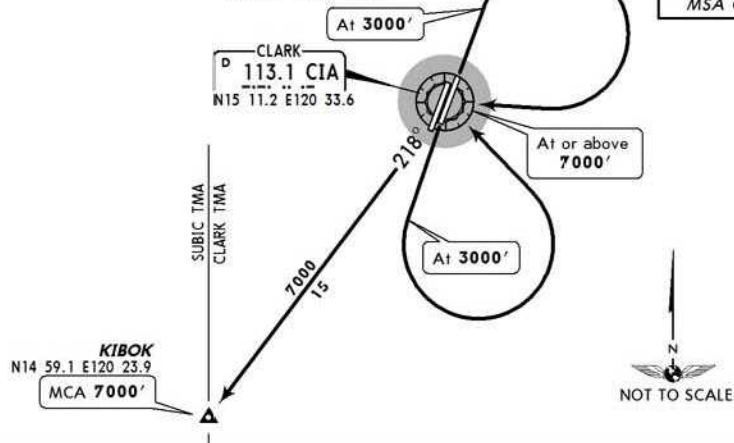
ROUTING

Intercept and track-out on CIA R-166 to D10 CIA. Continue climb to BAYAN.

Apt Elev 484' Trans level: FL 130 Trans alt: 11000'
When weather is VMC, climb on course during daytime may be authorized by ATC depending on traffic condition.



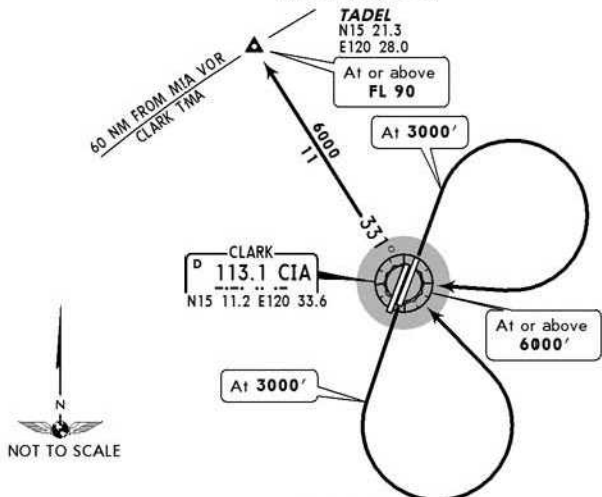
SID 29
SUBIC DEPARTURE
(RWYS 02R, 20L)



RWY	INITIAL CLIMB
02R	Straight out departure to 3000', then RIGHT climbing turn.
20L	Straight out departure to 3000', then LEFT climbing turn.

ROUTING
Proceed and climb to CIA. Track-out on CIA R-218 to KIBOK.

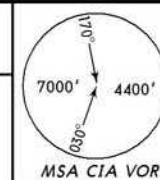
SID 30
W16-TAREM DEPARTURE
(RWYS 02R, 20L)



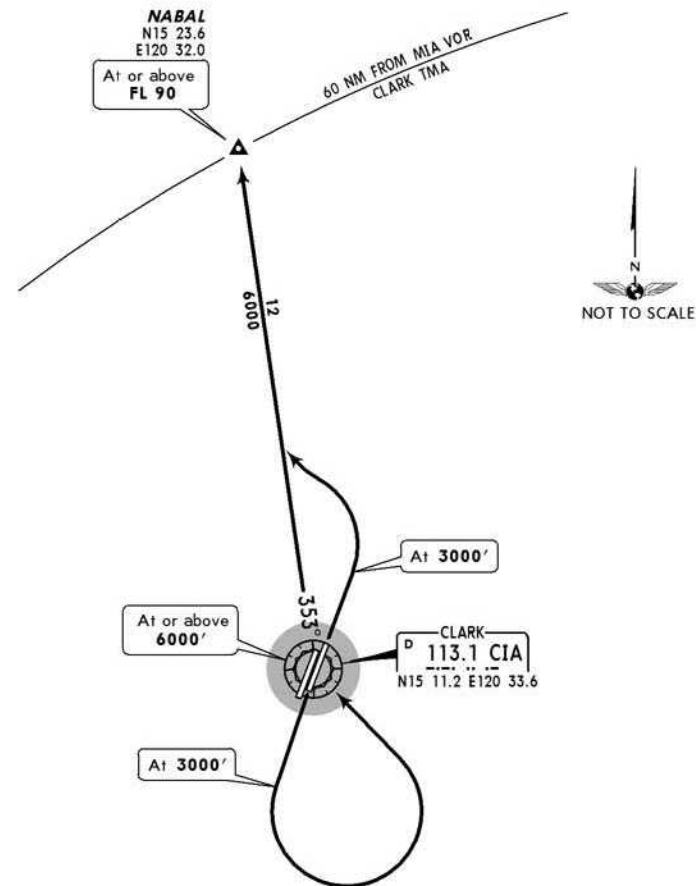
RWY	INITIAL CLIMB
02R	Straight out departure to 3000', then RIGHT climbing turn.
20L	Straight out departure to 3000', then LEFT climbing turn.

ROUTING
Proceed and climb to CIA. Track out on CIA R-331 to TADEL.

Apt Elev 484' Trans level: FL 130 Trans alt: 11000'

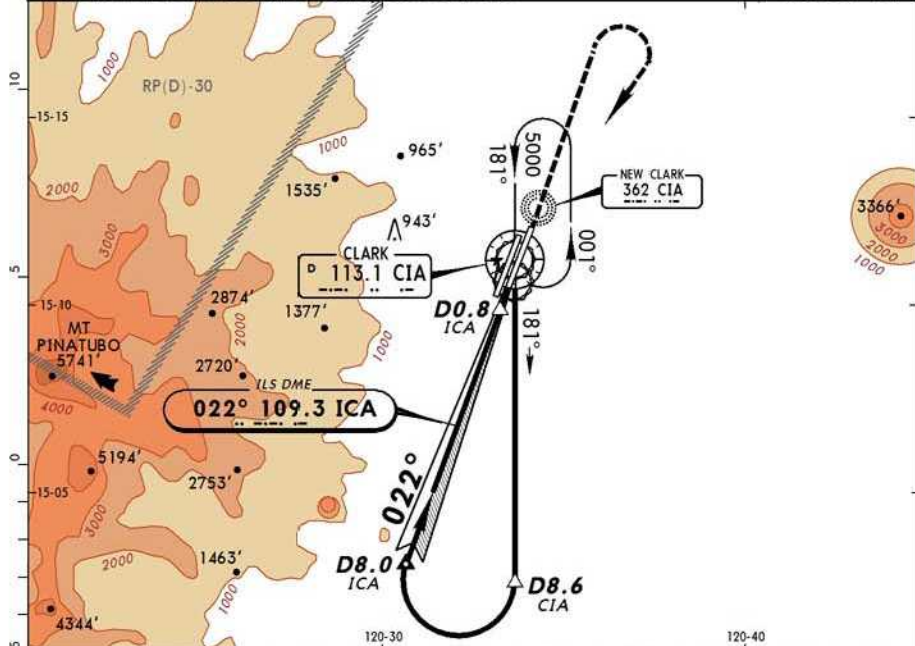


SID 31
W4-SAN FERNANDO
(RWYS 02R, 20L)

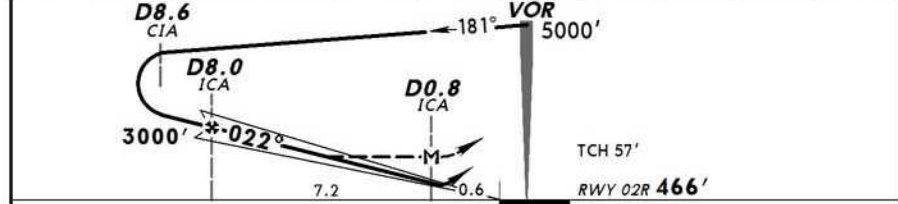


RWY	INITIAL CLIMB
02R	Straight out departure to 3000', then LEFT climbing turn. Intercept and track-out on CIA R-353 to NABAL.
20L	Straight out departure to 3000', then LEFT climbing turn. Proceed to CIA. Track-out on CIA R-353 to NABAL.

ATIS 113.1		CLARK Approach 119.2		CLARK Tower 118.7 124.3	
LOC ICA 109.3	Final Apch Crs 022°	Minimum Alt D8.0 ICA 3000' (2534')	ILS DA(H) 720' (254')	Apt Elev 484'	RWY 02R 466'
MISSED APCH: STRAIGHT-OUT climb to 3000'. Then climbing RIGHT turn to 5000'. Return to CIA VOR or as instructed by ATC. Alt Set: hPa Rwy Elev: 17 hPa Trans level: FL 130 Trans alt: 11000' 1. CAUTION: Terrain rises rapidly west of CIA VOR R-200.					
					7000' 4400' 300' 60' MSA CIA VOR

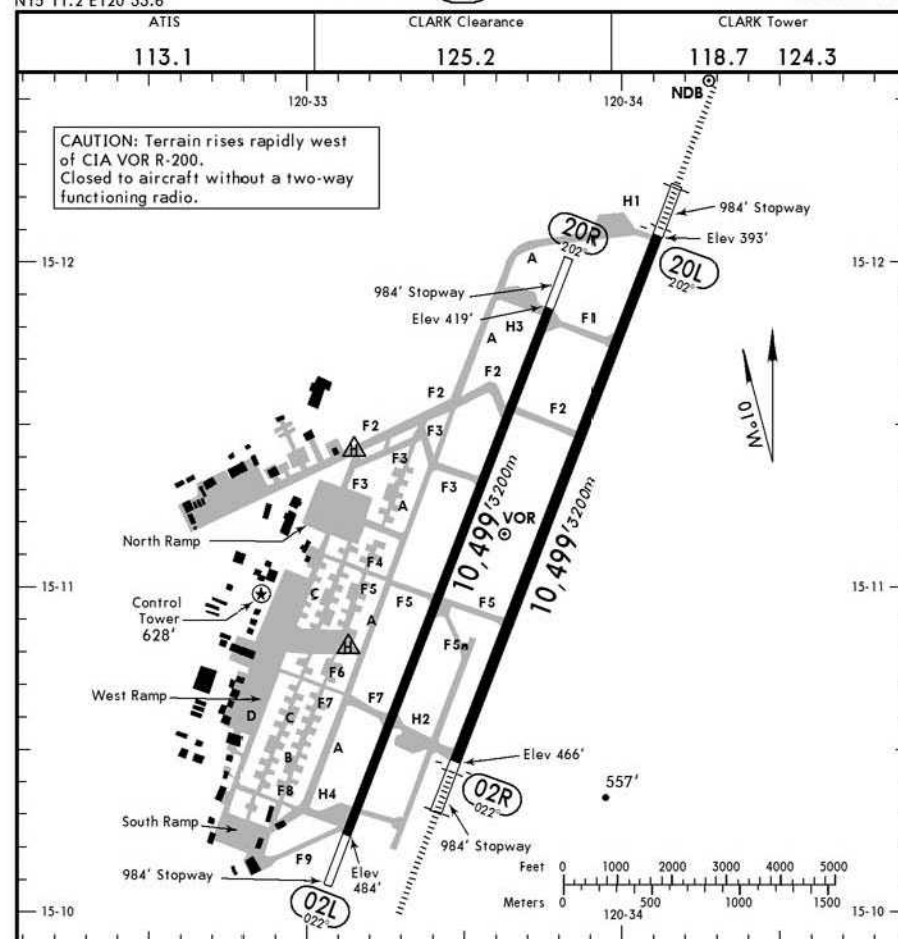


ICA DME	10.0	9.0	8.0	7.0	6.0	5.0	4.0	3.0	2.0	1.0
ALTITUDE	3630'	3310'	3000'	2680'	2365'	2050'	1730'	1415'	1100'	785'



Gnd speed-Kts	70	90	100	120	140	160			
GS	3.00°	377	484	538	646	753	861		
MAP at D0.8 ICA or FAF to MAP	7.2	6:10	4:48	4:19	3:36	3:05	2:42		

STRAIGHT-IN LANDING RWY 02R		CIRCLE-TO-LAND		No Circling
ILS DME		LOC DME (GS out)		
DA(H) 720' (254')		MDA(H) 810' (344')		
FULL	ALS out	ALS out	ALS out	
A			Max Kts	MDA(H)
B	0.8 km	1.2 km	100	870' (386') - 1.9 km
C			135	950' (466') - 2.8 km
D			180	950' (466') - 3.7 km
			205	1050' (566') - 4.6 km



RWY	USABLE LENGTHS	LANDING BEYOND		
		Threshold	Glide Slope	TAKE-OFF
02L	20R			148' 45m
02R	20L	HIRL CL HIALS PAPI		197' 60m

TAKE-OFF		AIR CARRIER (JAA)		AIR CARRIER (FAR 121)	
A B C D	LVP must be in Force All Rwys RCLM (Day only) or RL	All Rwys RCLM (Day only) or RL	All Rwys Adequate Vis Ref		
			250m	400m	2 Eng
					3 & 4 Eng
			300m		

RPLC/CRK
CLARK INTL

28 JAN 05 **(11-2)**

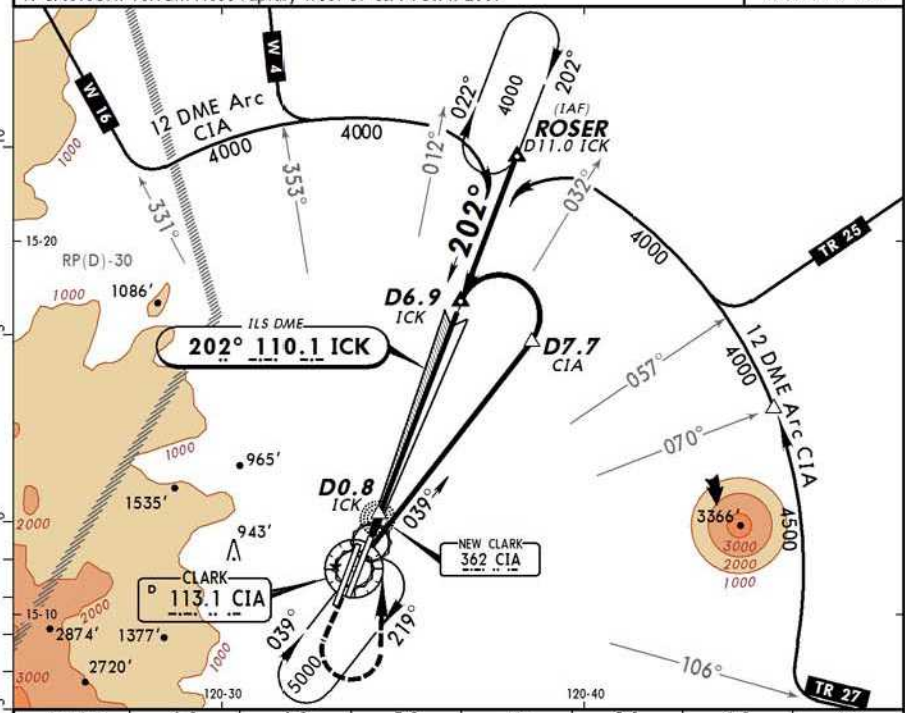
PAMPANGA, PHILIPPINES
VOR ILS Rwy 20L

ATIS 113.1		CLARK Approach 119.2		CLARK Tower 118.7 124.3	
LOC ICK 110.1	Final Apch Crs 202°	Minimum Alt D6.9 ICK 2600' (2207')	ILS DA(H) 650' (257')	Apt Elev 484'	RWY 20L 393'

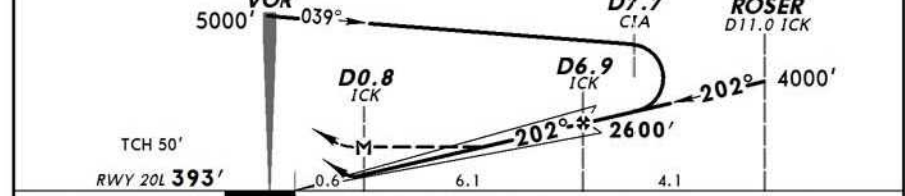
MISSED APCH: Make a LEFT climbing turn within 3 DME of CIA VOR. Return to ROSER D11.0 ICK outbound via CIA VOR R-022 climbing to 4000' or as instructed by ATC.

Alt Set: hPa Rwy Elev: 14 hPa Trans level: FL 130 Trans alt: 11000'
1. CAUTION: Terrain rises rapidly west of CIA VOR R-200.

MSA CIA VOR



ICK DME	1.0	2.0	3.0	4.0	5.0	6.0	6.9
ALTITUDE	710'	1025'	1345'	1660'	1975'	2290'	2600'



Gnd speed-Kts	70	90	100	120	140	160	PAPI HIALS	4000'	CIA	CIA	ROSER
GS	3:00"	3:77"	4:48"	5:38"	6:46"	8:16"					
MAP at D0.8 ICK or FAF to MAP	6.1	5:14	4:04	3:40	3:03	2:37	2:17	LT	within 113.1	via 113.1	
STRAIGHT-IN LANDING RWY 20L											
CIRCLE-TO-LAND											

STRAIGHT-IN LANDING RWY 20L		CIRCLE-TO-LAND		No Circling
ILS DME		MDA(H)		
DA(H)	650' (257')	LOC DME (GS out)	720' (327')	
FULL		ALS out	ALS out	
A		1.6 km	870' (386') - 1.9 km	
B	0.8 km	1.2 km	950' (466') - 2.8 km	
C		2.0 km	950' (466') - 3.7 km	
D			1050' (566') - 4.6 km	

CHANGES: Location name, intersections. FOR FLIGHTSIM USE ONLY

RPLC/CRK
CLARK INTL

28 JAN 05 **(13-1)**

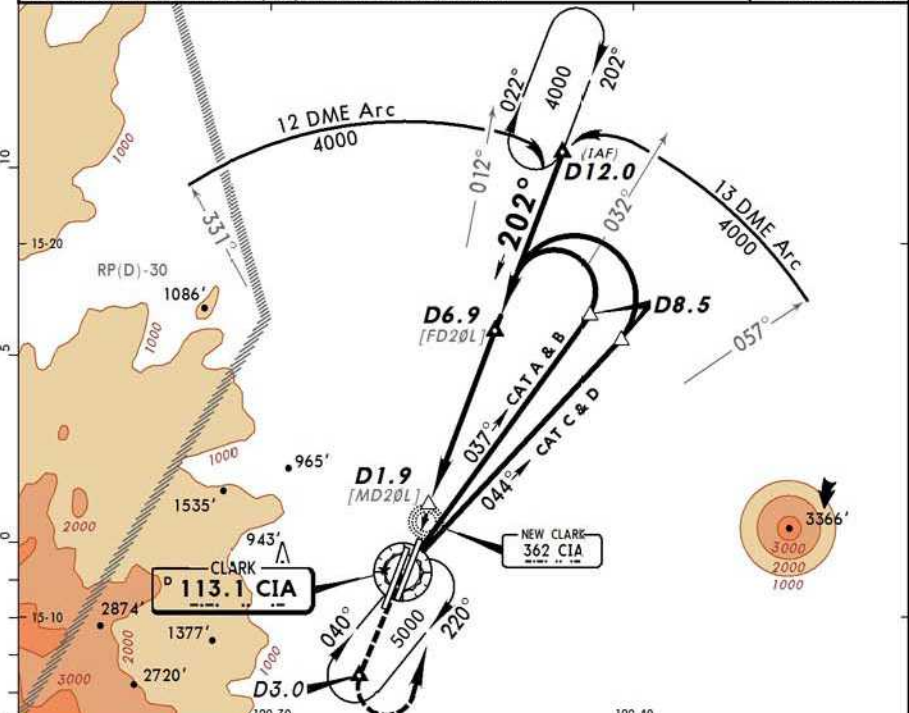
PAMPANGA, PHILIPPINES
VOR DME Rwy 20L

ATIS 113.1		CLARK Approach 119.2		CLARK Tower 118.7 124.3	
VOR CIA 113.1	Final Apch Crs 202°	Minimum Alt D6.9 2300' (1907')	MDA(H) 720' (327')	Apt Elev 484'	RWY 20L 393'

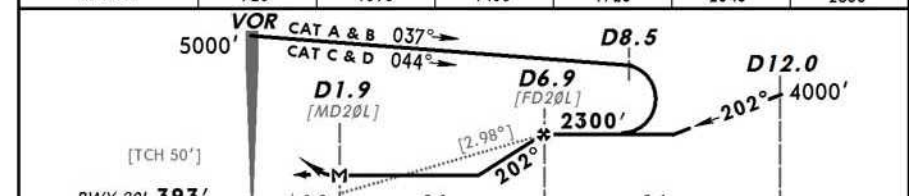
MISSED APCH: Climb to CIA VOR, on passing D3.0, turn LEFT to D12.0 climbing to 4000', or as instructed by ATC.

Alt Set: hPa Rwy Elev: 14 hPa Trans level: FL 130 Trans alt: 11000'
1. CAUTION: Terrain rises rapidly west of CIA VOR R-200.

MSA CIA VOR



CIA DME	1.9	3.0	4.0	5.0	6.0	6.9
ALTITUDE	720'	1090'	1400'	1720'	2040'	2300'



Gnd speed-Kts	70	90	100	120	140	160	PAPI HIALS	D3.0
Descent Gradient 5.2% or Descent angle [2.98°]	369	474	527	633	738	843		
MAP at D1.9	0.9	5.0						
STRAIGHT-IN LANDING RWY 20L								
CIRCLE-TO-LAND								

STRAIGHT-IN LANDING RWY 20L		CIRCLE-TO-LAND		No Circling
MDA(H)		720' (327')		
ALS out		ALS out		
A		1.6 km	870' (386') - 1.9 km	
B		2.0 km	950' (466') - 2.8 km	
C		2.4 km	950' (466') - 3.7 km	
D			1050' (566') - 4.6 km	

CHANGES: Location name, intersection, descent angle added. FOR FLIGHTSIM USE ONLY