

General Info

, PHL

N 08° 24' 58.4 E124° 36' 40.9 Magnetic Variation: 0.0°W

Elevation: 601'

Public, Control Tower, IFR, No Fee, Rotating Beacon, No Customs

Time Zone Info: GMT+8:00 no DST

Runway Info

Runway 01-19 7808' x 118' asphalt

Runway 01 (13.0°M) TDZE 601'

Displaced Threshold Distance 197'

Stopway Distance 144'

Runway 19 (193.0°M) TDZE 599'

Stopway Distance 1270'

Communications Info

Cagayan Tower **52.05**

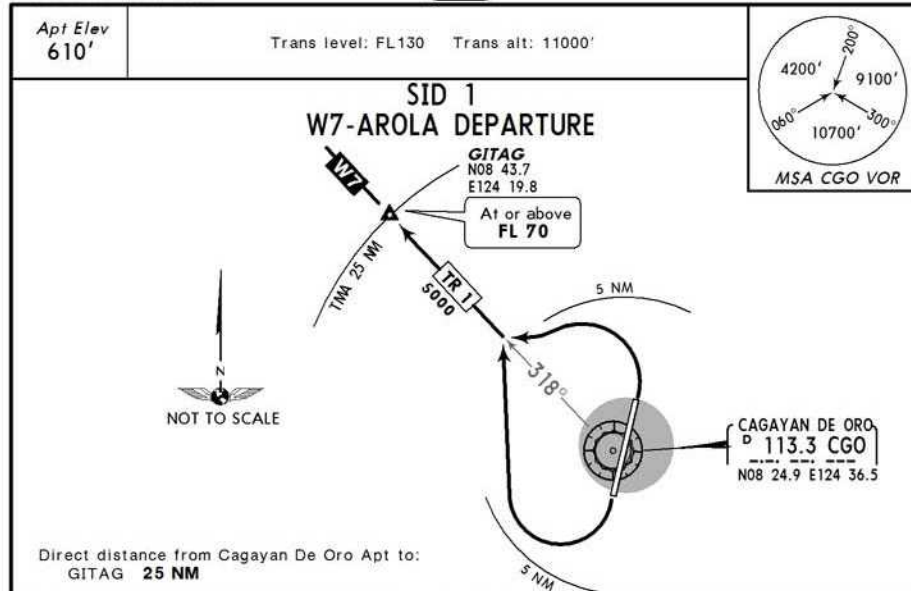
Cagayan Tower **38.725**

Cagayan Tower **123.6**

Cagayan Tower **122.3**

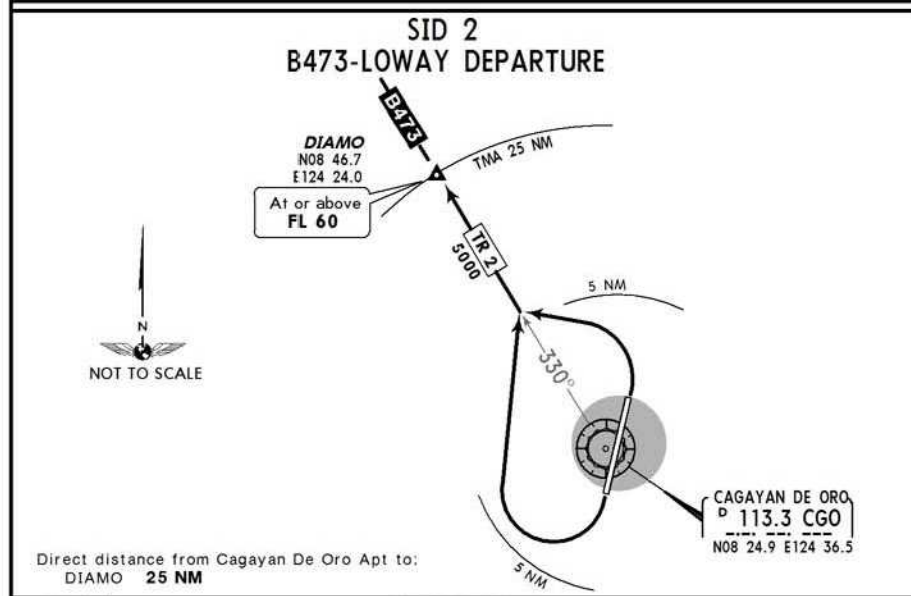
Cagayan Approach Control **123.6**

Notebook Info



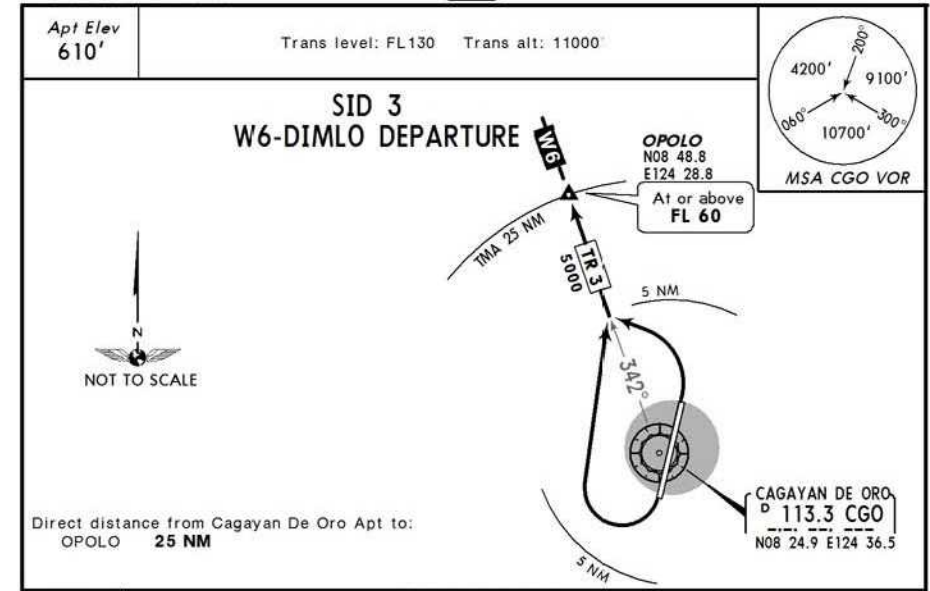
RWY	INITIAL CLIMB
01	Turn LEFT within 5 NM.
19	Turn RIGHT within 5 NM.

ROUTING
Intercept and track outbound on CGO R-318 to GITAG.



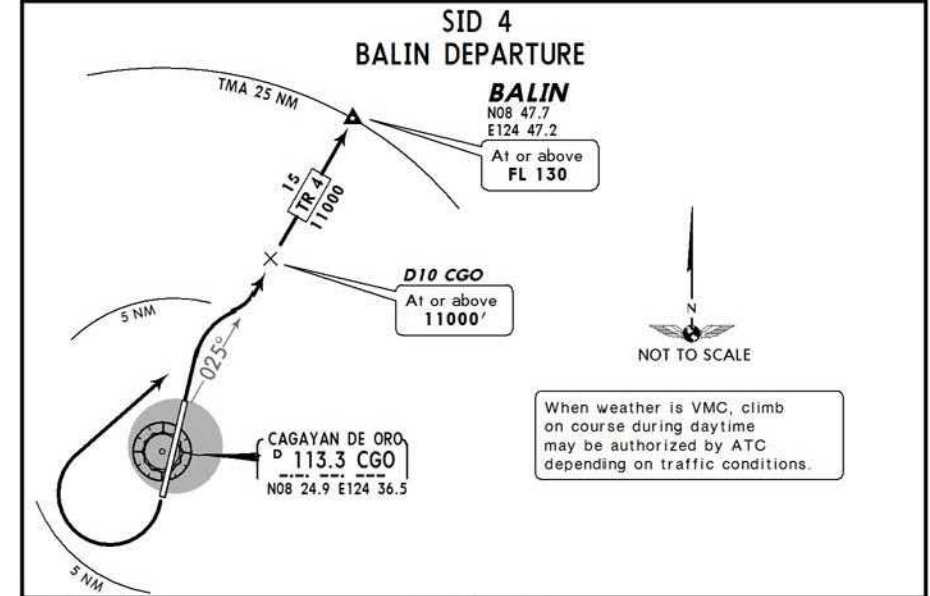
RWY	INITIAL CLIMB
01	Turn LEFT within 5 NM.
19	Turn RIGHT within 5 NM.

ROUTING
Intercept and track outbound on CGO R-330 to DIAMO.



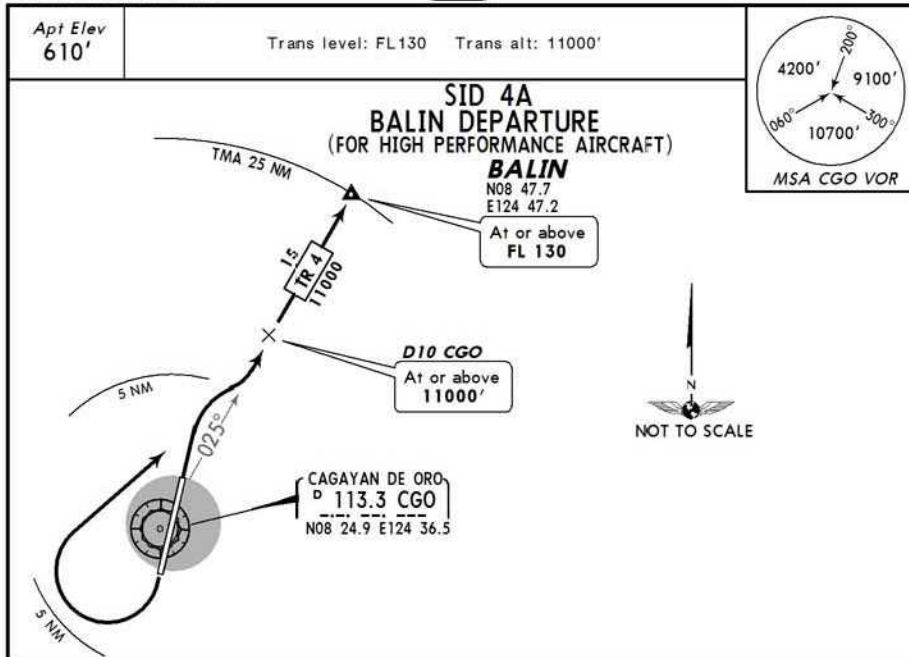
RWY	INITIAL CLIMB
01	Turn LEFT within 5 NM.
19	Turn RIGHT within 5 NM.

ROUTING
Intercept and track outbound on CGO R-342 to OPOLO.



RWY	INITIAL CLIMB
01	Turn RIGHT within 5 NM.
19	Turn RIGHT within 5 NM.

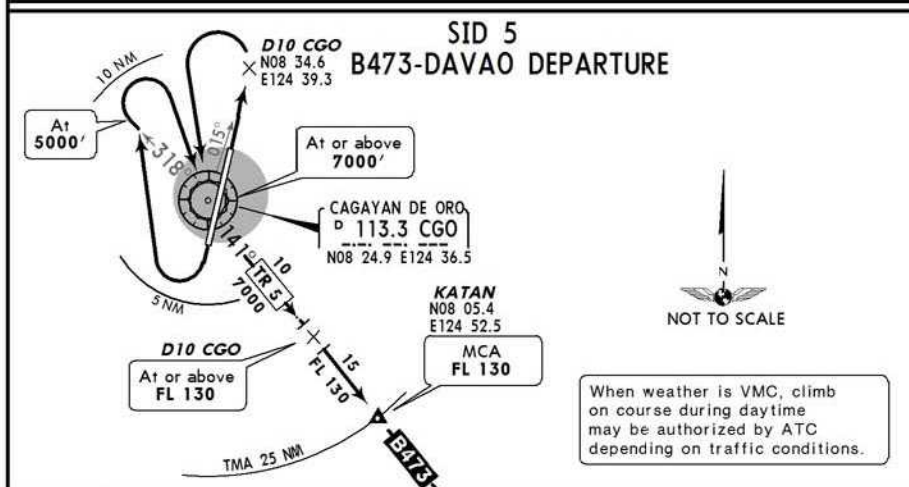
ROUTING
Intercept and track outbound on CGO R-025 to D10 CGO, then continue climb to BALIN.



RWY		INITIAL CLIMB
01	19	Turn RIGHT within 5 NM.

ROUTING

Intercept and track outbound on CGO R-025 to D10 CGO, then continue climb to BALIN.



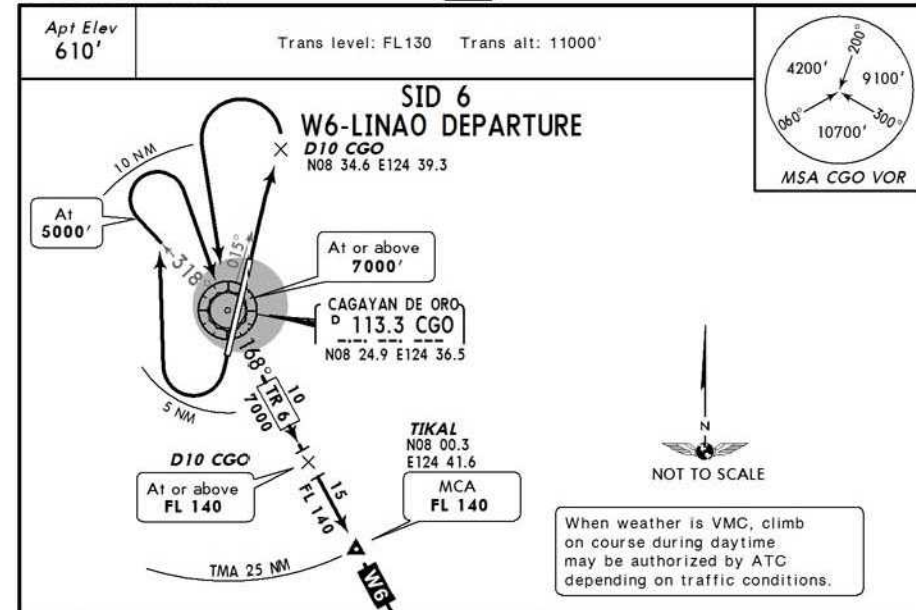
RWY		INITIAL CLIMB
01	19	Straight out departure. Climb on CGO R-015 until D10 CGO, then make a climbing LEFT turn to CGO.
19		RIGHT turn within 5 NM. Climb on CGO R-318 to 5000', then a RIGHT climbing turn within 10 NM to CGO.

ROUTING

Track outbound on CGO R-141 to KATAN.

CHANGES: SID 4A new, SID 5 revised.

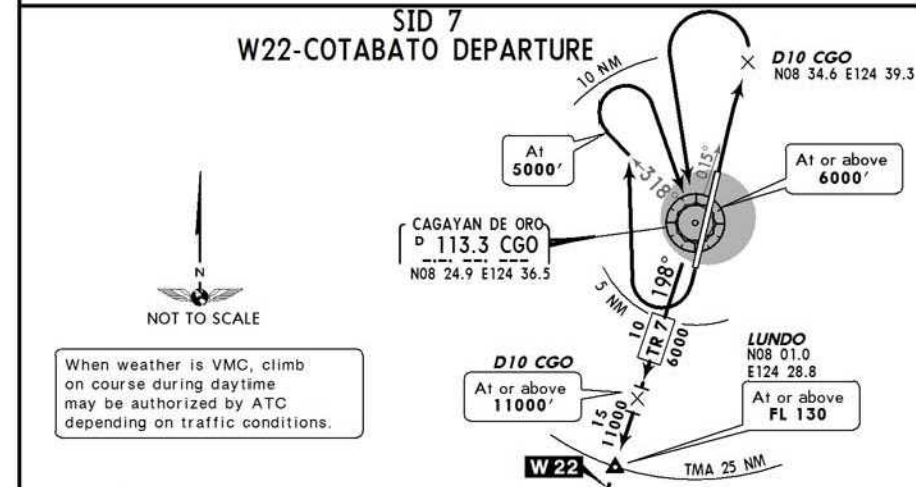
FOR FLIGHTSIM USE ONLY.



RWY		INITIAL CLIMB
01	19	Straight out departure. Climb on CGO R-015 until D10 CGO, then make a climbing LEFT turn to CGO.
19		Turn RIGHT within 5 NM. Climb on CGO R-318 to 5000', then a climbing RIGHT turn within 10 NM to CGO.

ROUTING

Track outbound on CGO R-168 to TIKAL.



RWY		INITIAL CLIMB
01	19	Straight out departure. Climb on CGO R-015 until D10 CGO, then make a climbing LEFT turn to CGO.
19		RIGHT turn within 5 NM. Climb on CGO R-318 to 5000', then a RIGHT climbing turn within 10 NM to CGO.

ROUTING

Track outbound on CGO R-198 to LUNDO.

CHANGES: SID 6 reindexed, revised, new format.

FOR FLIGHTSIM USE ONLY.

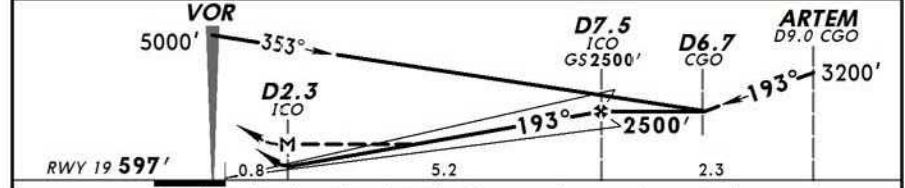
*CAGAYAN Approach			*CAGAYAN Tower		
123.6			122.3		
LOC 110.1	Final Apch Crs 193°	GS D7.5 ICO 2500' (1903')	DA(H) (CONDITIONAL) 920' (323')	Apt Elev 601' RWY 19 597'	

MISSED APCH: RIGHT climbing turn within 5 NM of CGO VOR on heading 018° to 5000'. Return to CGO VOR or as instructed by ATC.

Alt Set: hPa Rwy Elev: 22 hPa Trans level: FL 130 Trans alt: 11000' MSA CGO VOR



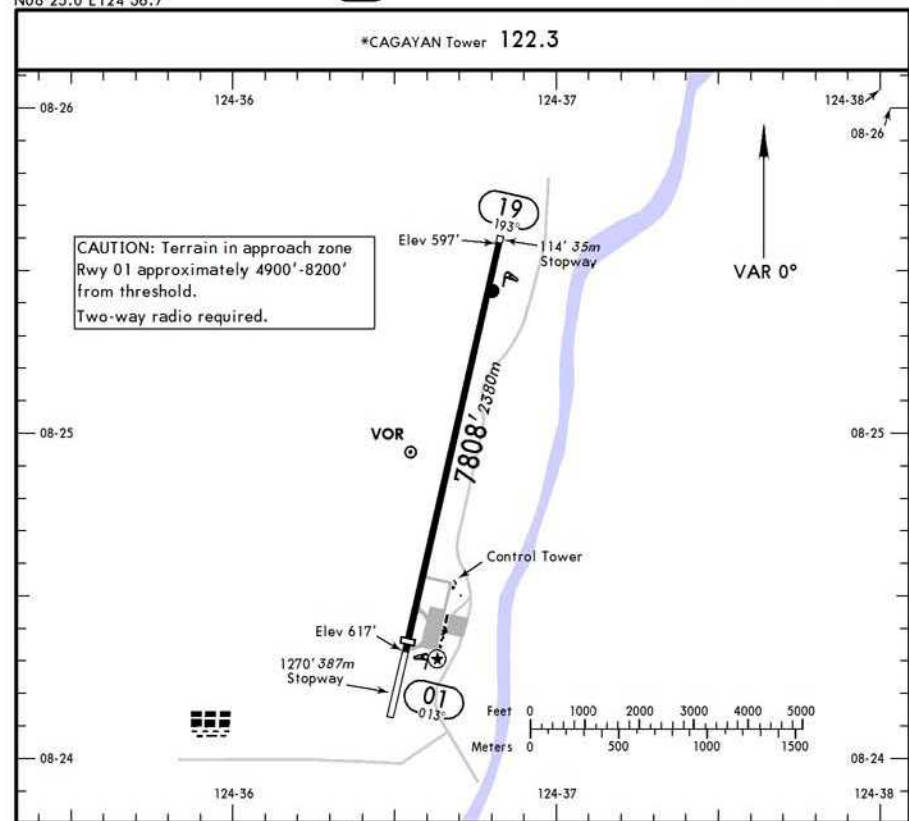
ICD DME	2.3	3.0	4.0	5.0	6.0	7.0	7.5	9.8
ALTITUDE	920'	1125'	1430'	1740'	2045'	2355'	2500'	3200'



Gnd Speed-Kts	70	90	100	120	140	160			
GS	3.00°	377	484	538	646	753	861		

MAP at D2.3 ICO

STRAIGHT-IN LANDING RWY 19		CIRCLE-TO-LAND	
ILS DA(H) 920' (323')	LOC (GS out) MDA(H) 1100' (503')	Max Kts	MDA(H)
A		100	1200' (599') - 1.9 km
B	1.0 km	135	1240' (639') - 2.8 km
C		180	1340' (739') - 3.7 km
D	NOT APPLICABLE	D	NOT APPLICABLE



ADDITIONAL RUNWAY INFORMATION

RWY	PAPI	USABLE LENGTHS	LANDING BEYOND		TAKE-OFF	WIDTH
			Threshold	Glide Slope		
01		grooved	7611' 2320m			118' 36m
19				6806' 2074m		

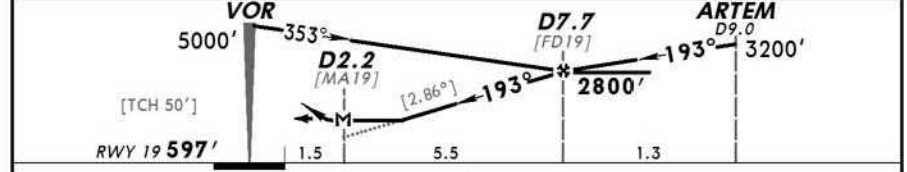
TAKE-OFF AIR CARRIER (JAA) All Rwys

LVP must be in Force		RCLM (DAY only) or RL	
A			
B	250m		400m
C			
D	300m		

*CAGAYAN Approach			*CAGAYAN Tower		
123.6			122.3		
VOR CGO 113.3	Final Apch Crs 193°	Minimum Alt D7.7 2800' (2203')	MDA(H) (CONDITIONAL) 1140' (543')	Apt Elev 601' RWY 19 597'	
MISSED APCH: RIGHT climbing turn within 5 NM of CGO VOR on heading 018° to 5000'. Return to CGO VOR or as instructed by ATC.					
Alt Set: hPa		Rwy Elev: 22 hPa	Trans level: FL 130	Trans alt: 11000'	
MSA CGO VOR					



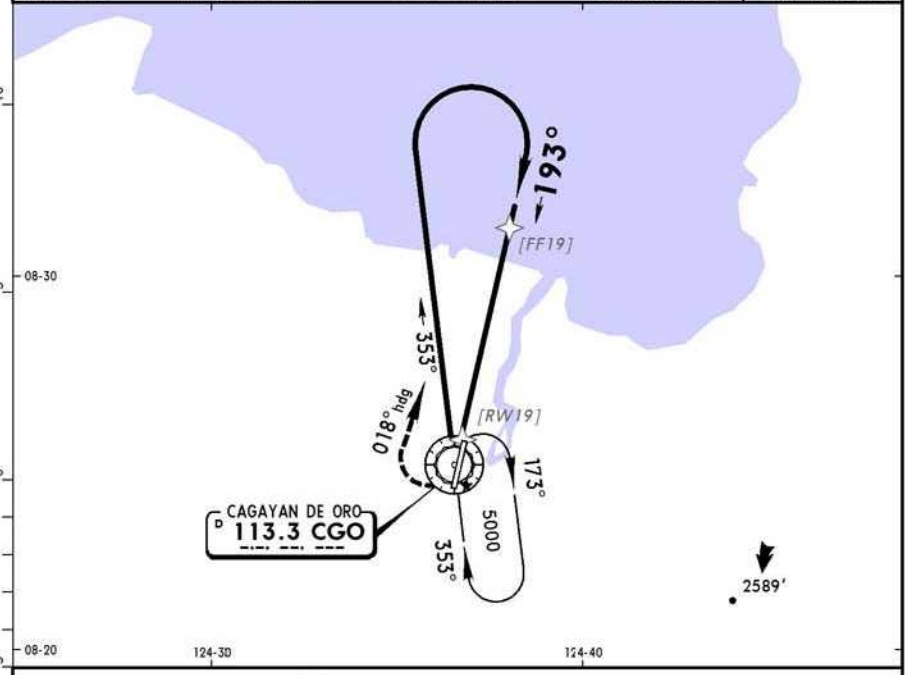
CGO DME	2.2	3.0	4.0	5.0	6.0	7.7
ALTITUDE	1140'	1370'	1670'	1980'	2290'	2800'



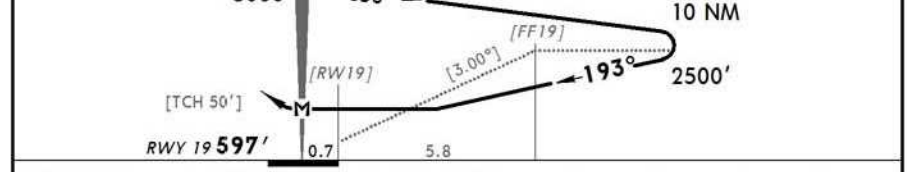
Gnd speed-Kts	70	90	100	120	140	160	PAPI	RT	5 NM	018°	5000'
Descent Gradient 5.0% or	354	456	506	608	709	810					
Descent angle [2.86°]											
MAP at D2.2											

STRAIGHT-IN LANDING RWY 19				CIRCLE-TO-LAND			
MDA(H) 1140' (543')							
DAY		NIGHT		DAY		NIGHT	
A	1.6 km		NA	Max Kts	MDA(H)		NA
B				100	1200' (599') - 1.9 km		
C	2.0 km			135	1240' (639') - 2.8 km		
D	NOT APPLICABLE			180	1340' (739') - 3.7 km		
D				NOT APPLICABLE			

*CAGAYAN Approach			*CAGAYAN Tower		
123.6			122.3		
VOR CGO 113.3	Final Apch Crs 193°	No FAF	MDA(H) (CONDITIONAL) 1340' (743')	Apt Elev 601' RWY 19 597'	
MISSED APCH: RIGHT climbing turn within 5 NM of CGO VOR on heading 018° to 5000'. Return to CGO VOR or as instructed by ATC.					
Alt Set: hPa		Rwy Elev: 22 hPa	Trans level: FL 130	Trans alt: 11000'	
MSA CGO VOR					



CGO DME	2.2	3.0	4.0	5.0	6.0	7.7
ALTITUDE	1140'	1370'	1670'	1980'	2290'	2800'



Gnd speed-Kts	70	90	100	120	140	160	PAPI	RT	5 NM	018°	5000'
Descent angle [3.00°]	372	478	531	637	743	849					
MAP at VOR											

STRAIGHT-IN LANDING RWY 19				CIRCLE-TO-LAND			
MDA(H) 1340' (743')							
DAY		NIGHT		DAY		NIGHT	
A	1.6 km		NA	Max Kts	MDA(H)		NA
B				100	1340' (739') - 1.9 km		
C	3.2 km			135	1340' (739') - 2.8 km		
D	NOT APPLICABLE			180	1340' (739') - 3.7 km		
D				NOT APPLICABLE			