

General Info

, PHL

N 06° 03' 29.2 E 125° 05' 46.3 Magnetic Variation: 0.0°W

Elevation: 505'

Public, Control Tower, IFR, No Fee, Rotating Beacon,

Customs available on a restricted basis

Fuel: Jet A-1

Time Zone Info: GMT+8:00 no DST

Runway Info

Runway 17-35 10587' x 148' concrete

Runway 17 (174.0°M) TDZE 505'

Lights: Edge, ALS

Stopway Distance 984'

Runway 35 (354.0°M) TDZE 480'

Lights: Edge

Right Traffic

Stopway Distance 984'

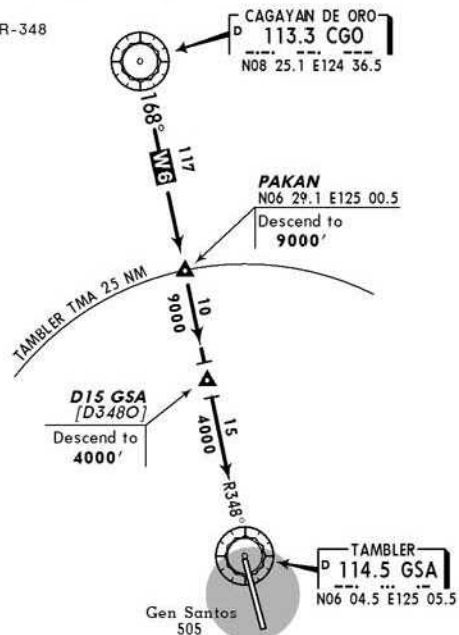
Communications InfoTambler Tower **118.4** SecondaryTambler Approach Control **119.1**Tambler Approach Control **118.2** MilitaryTambler Radio **68.025**Tambler Radio **36.71** Secondary**Notebook Info**

TRANS LEVEL: FL 130
TRANS ALT: 11000'

STAR 1
[STAR1]

ARRIVAL

At Pakan Int track inbound on GSA R-348 and descend to 9000'. At D15 GSA descend to 4000'.

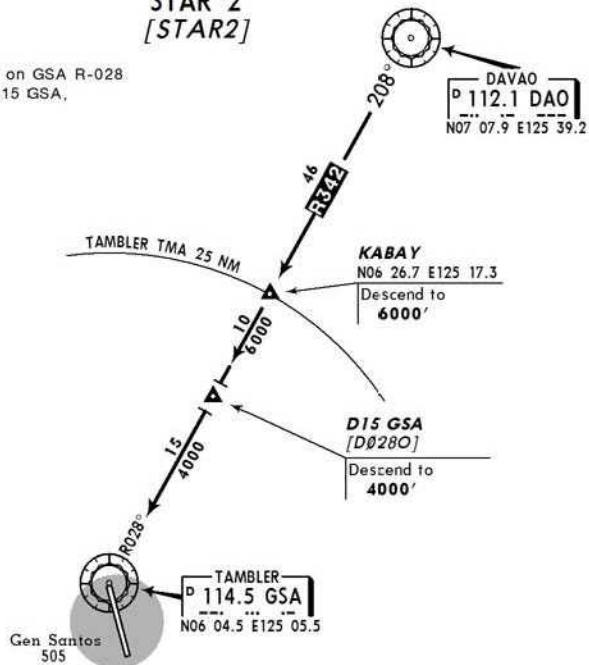


TRANS LEVEL: FL 130
TRANS ALT: 11000'

STAR 2
[STAR2]

ARRIVAL

At Kabay Int track inbound on GSA R-028 and descend to 6000'. At D15 GSA, descend to 4000'.

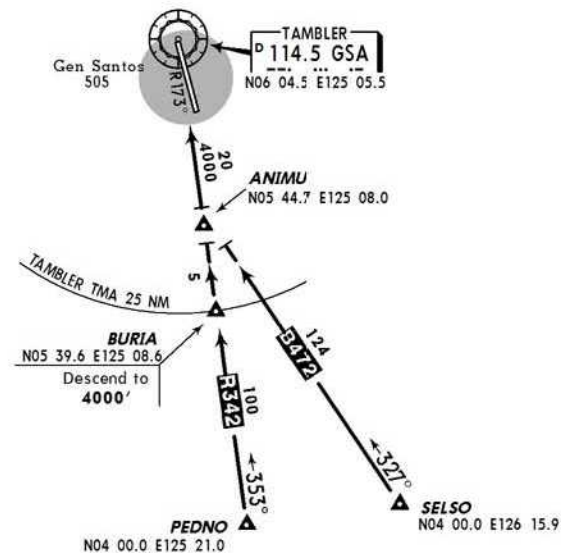


TRANS LEVEL: FL 130
TRANS ALT: 11000'

STAR 3
[STAR3]

ARRIVAL

At Buria Int track inbound on GSA R-173 and descend to 4000'.

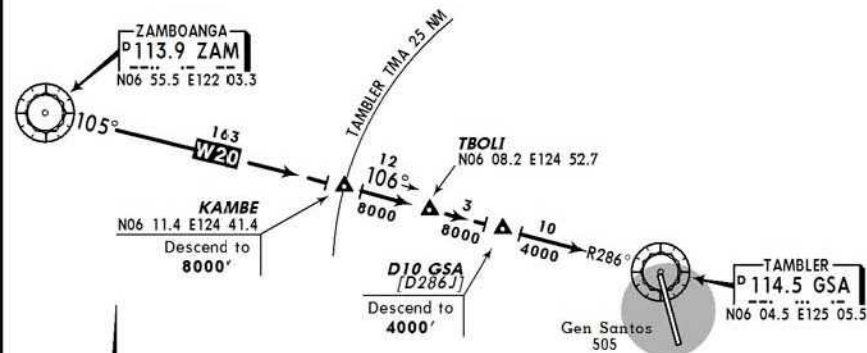


TRANS LEVEL: FL 130
TRANS ALT: 11000'

STAR 4
[STAR4]

ARRIVAL

At Kambe Int track inbound on GSA R-286 and descend to 8000'. At D10 GSA, descend to 4000'.

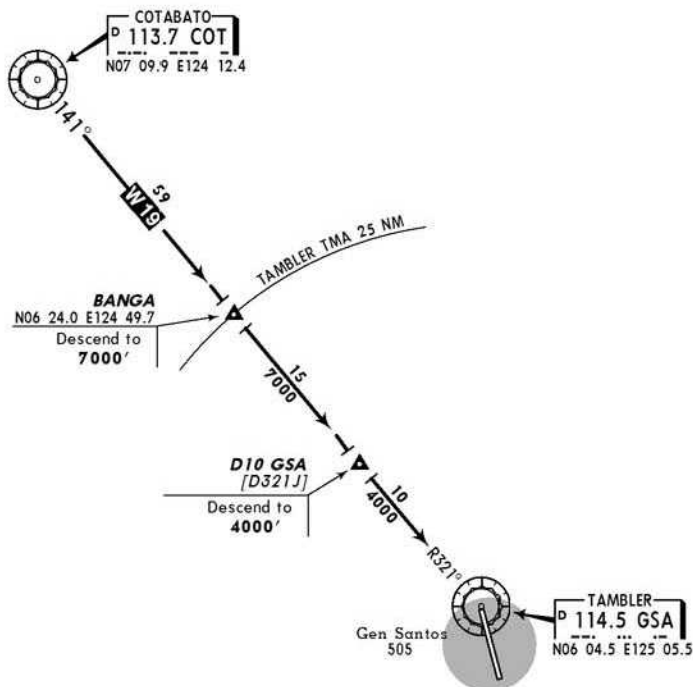


TRANS LEVEL: FL 130
TRANS ALT: 11000'

STAR 5
[STAR5]

ARRIVAL

At Banga Int track inbound on GSA R-321 and descend to 7000'. At D10 GSA, descend to 4000'.



TRANS LEVEL: FL 130
TRANS ALT: 11000'

SID 1
W6-CAGAYAN DE ORO DEPARTURE

TAKE-OFF

Rwy 17: Turn LEFT within 5 NM.
Thence

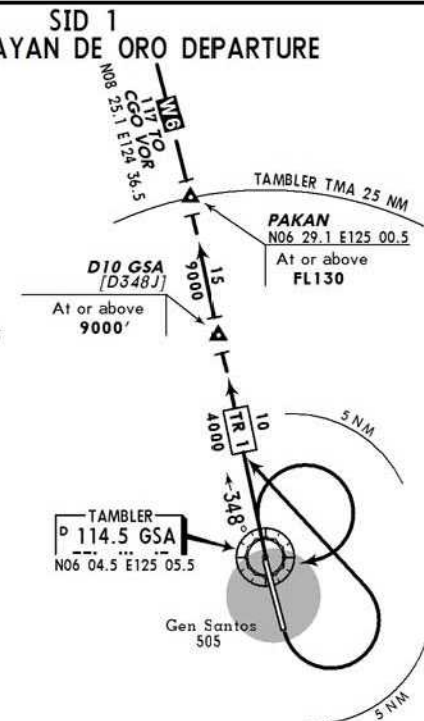
Rwy 35: Turn RIGHT within 5 NM.
Thence

DEPARTURE

Rwy 17: Intercept and track outbound on GSA R-348, to cross D10 GSA at or above 9000'. Continue climb to cross Pakan Int at or above FL130.

Rwy 35: RIGHT climbing turn to GSA VOR. Track outbound and climb on GSA R-348, to cross D10 GSA at or above 9000'. Continue climb to cross Pakan Int at or above FL130.

When weather is VMC, climb on course during daytime may be authorized by ATC depending on traffic condition.



TRANS LEVEL: FL 130
TRANS ALT: 11000'

SID 2
R342-DAVAO DEPARTURE

TAKE-OFF

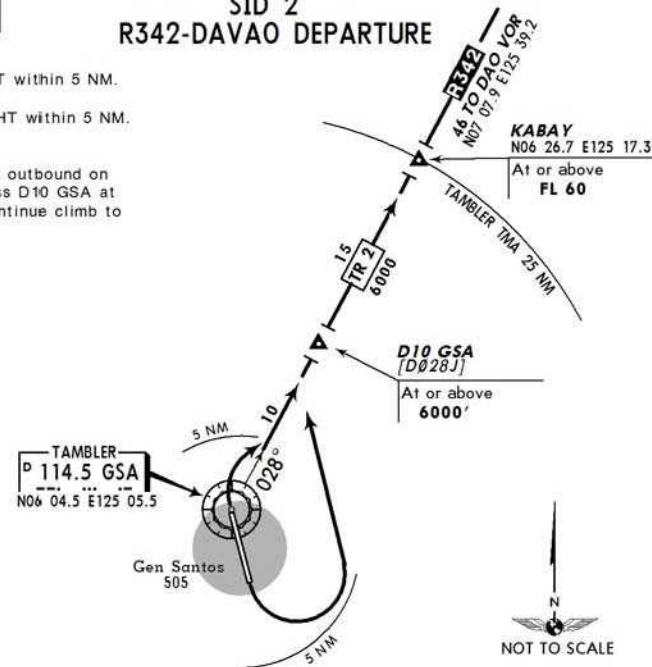
Rwy 17: Turn LEFT within 5 NM.
Thence

Rwy 35: Turn RIGHT within 5 NM.
Thence

DEPARTURE

Intercept and track outbound on GSA R-028, to cross D10 GSA at or above 6000'. Continue climb to Kabay Int.

TAMBLER
P 114.5 GSA
N06 04.5 E125 05.5



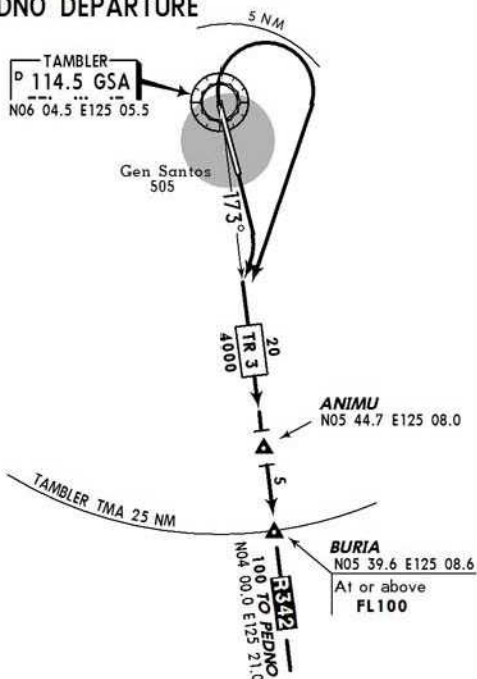
TRANS LEVEL: FL 130
TRANS ALT: 11000'

SID 3
R342-PEDNO DEPARTURE

TAKE-OFF
Rwy 17: Straight out. Thence
Rwy 35: Turn RIGHT within 5 NM.
Thence

DEPARTURE
Intercept and track outbound on GSA R-173, to cross Buria Int at or above FL100.

Departure via B-472 to Selso Int shall be cleared via SID 3 (T3) until Animu Int.



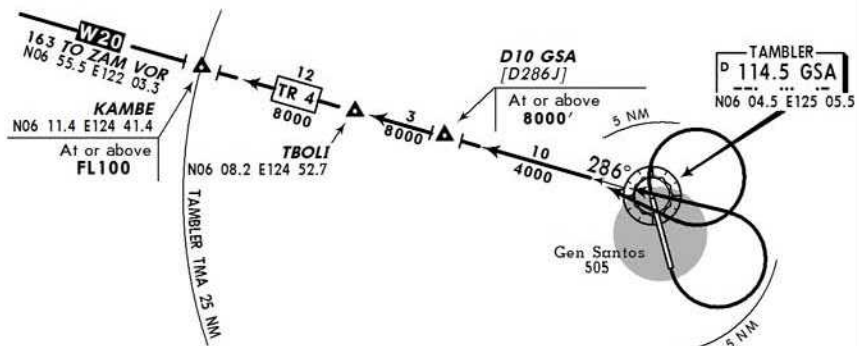
TRANS LEVEL: FL 130
TRANS ALT: 11000'

SID 4
W20-ZAMBOANGA DEPARTURE

TAKE-OFF
Rwy 17: Turn LEFT within 5 NM.
Thence
Rwy 35: Turn RIGHT within 5 NM.
Thence

DEPARTURE
Intercept and track outbound on GSA R-286, to cross D10 GSA at or above 8000'. Continue climb to cross Kambe Int at or above FL100.

When weather is VMC, climb on course during daytime may be authorized by ATC depending on traffic condition.



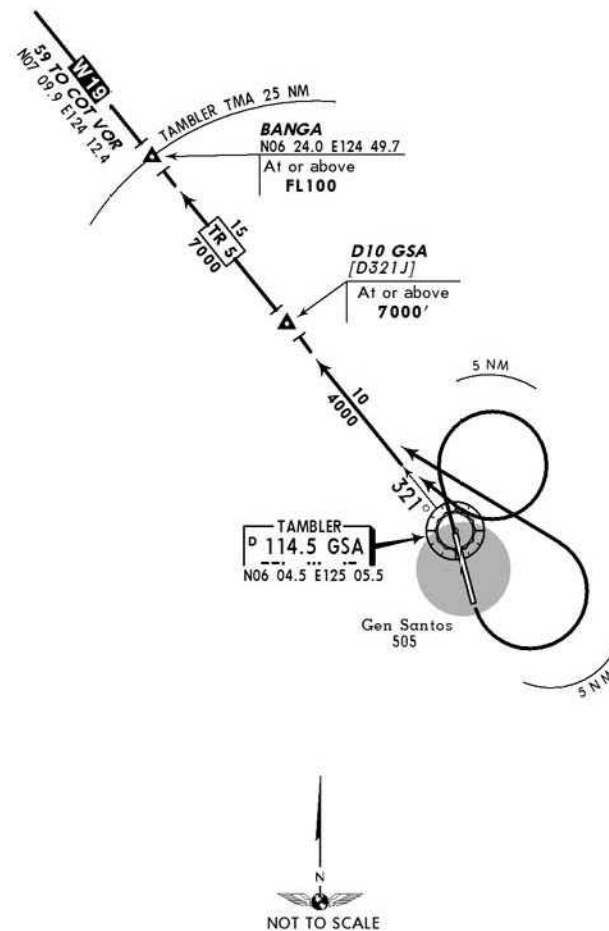
TRANS LEVEL: FL 130
TRANS ALT: 11000'

SID 5
W19-COTABATO DEPARTURE

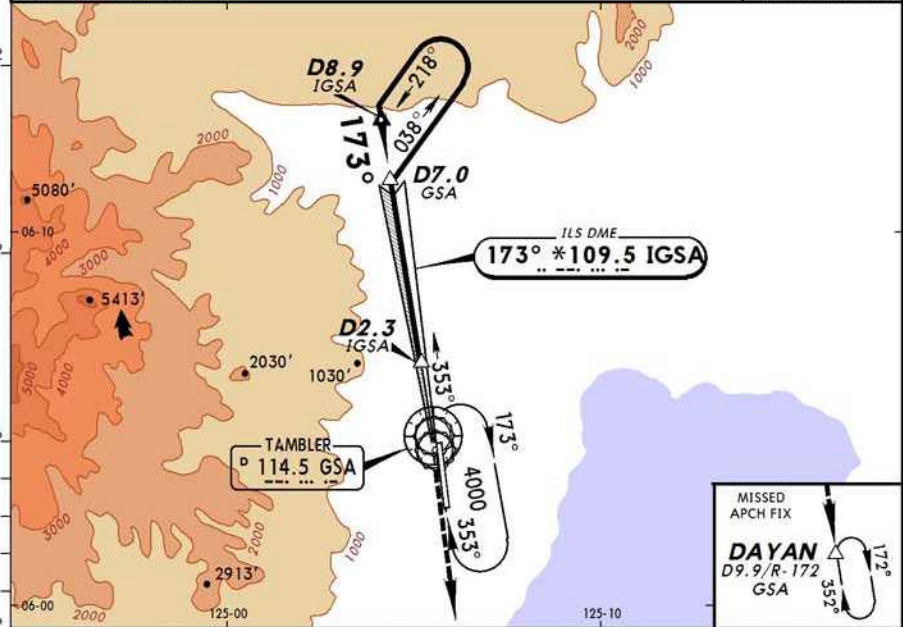
TAKE-OFF
Rwy 17: Turn LEFT within 5 NM.
Thence
Rwy 35: Turn RIGHT within 5 NM.
Thence

DEPARTURE
Intercept and track outbound on GSA R-321, to cross D10 GSA at or above 7000'. Continue climb to cross Banga Int at or above FL100.

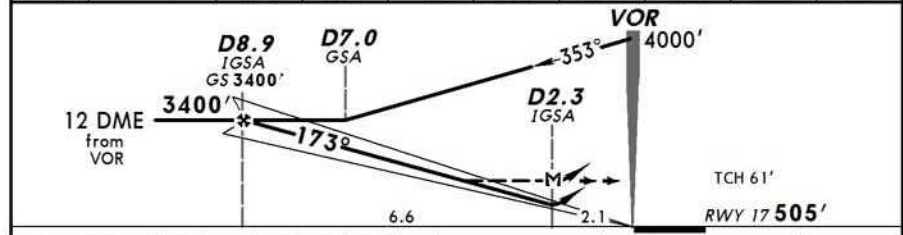
When weather is VMC, climb on course during daytime may be authorized by ATC depending on traffic condition.



*TAMBLER Approach			*TAMBLER Tower		
119.1	118.2		118.4		
LOC IGSA *109.5	Final Apch Crs 173°	GS D8.9 IGSA 3400' (2895')	ILS DA(H) 1240' (735')	Apt Elev 505' RWY 17 505'	
MISSED APCH: STRAIGHT-OUT to DAYAN and hold at 3000' or as instructed by ATC.					
Alt Set: hPa		Rwy Elev: 18 hPa	Trans level: FL 130	Trans alt: 11000'	
1. CAUTION: Rising terrain.					
MSA GSA VOR					

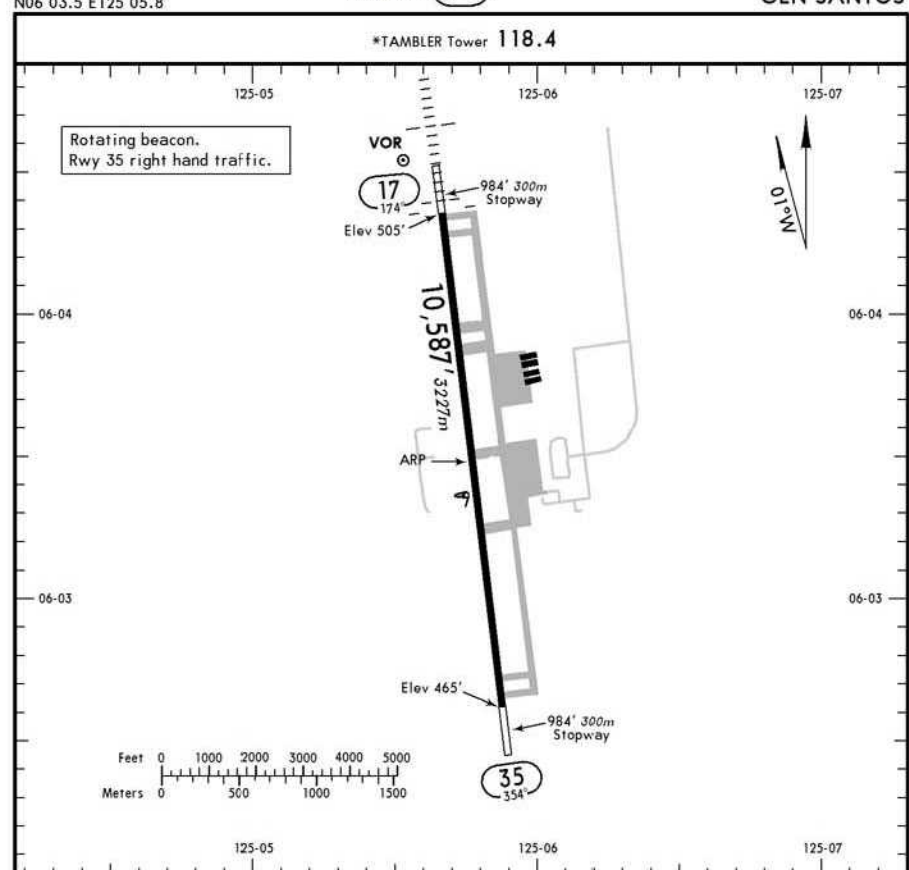


LOC (GS out)	IGSA DME	9.0	8.0	7.0	6.0	5.0	4.0	3.0	2.3
ALTITUDE		3420'	3095'	2775'	2450'	2125'	1800'	1480'	1240'



Gnd speed-Kts	70	90	100	120	140	160			
GS	3.05°	383	492	547	656	766	875		
MAP at D2.3 IGSA									

STRAIGHT-IN LANDING RWY 17				CIRCLE-TO-LAND				No Circling
ILS		LOC (GS out)		Max Kts		MDA(H)		
DA(H) 1240' (735')		MDA(H) 1390' (885')						
FULL		ALS out						
A	1.2 km		1.6 km		100	1500' (995') - 1.9 km		
B			2.0 km		135	1500' (995') - 2.8 km		
C			2.4 km		180	1600' (1095') - 3.7 km		
D					205	1600' (1095') - 4.6 km		

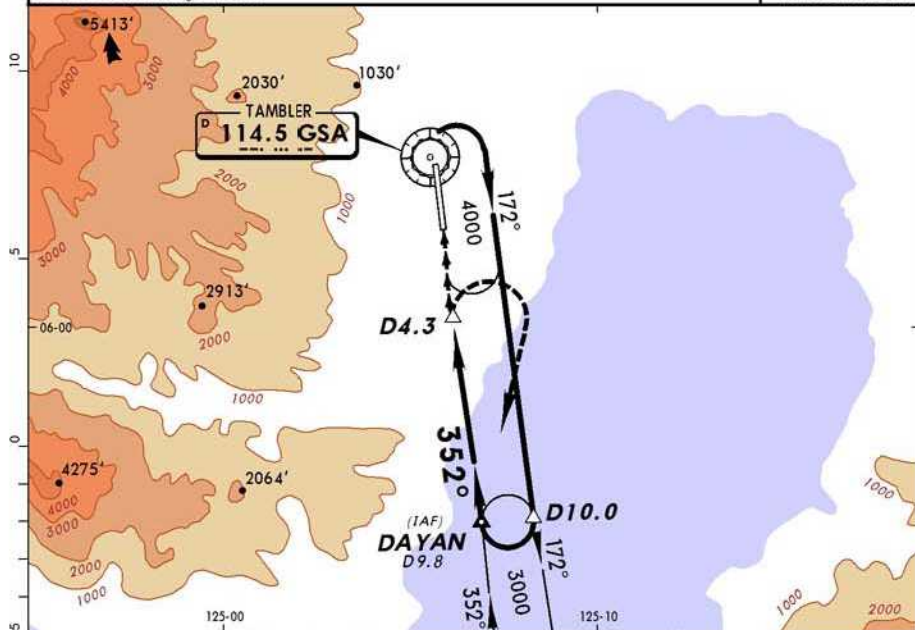


ADDITIONAL RUNWAY INFORMATION						
RWY	USABLE LENGTHS LANDING BEYOND					
	Threshold	Glide Slope	TAKE-OFF	WIDTH		

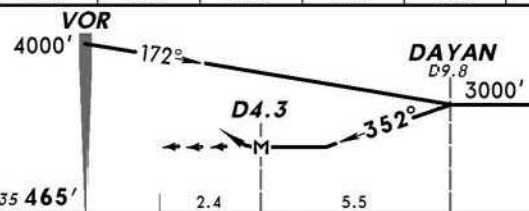
17	RL	SALS	TDZ	REIL	PAPI-L (angle 3.0°)			9385' 2861m	148'	45m
35	RL	TDZ	REIL	PAPI-L (angle 3.0°)						

TAKE-OFF		
AIR CARRIER (JAA)		AIR CARRIER (FAR 121)
LVP must be in Force All Rwys RCLM (Day only) or RL		All Rwys RCLM (Day only) or RL Adequate Vis Ref
A	RVR 250m	2 Eng 400m
B		3 & 4 Eng 400m
C		
D	RVR 300m	

*TAMBLER Approach			*TAMBLER Tower		
119.1 118.2		118.4			
VOR GSA 114.5	Final Apch Crs 352°	No FAF	MDA(H) 1260' (795')	Apt Elev 505'	RWY 35 465'
MISSED APCH: Make a RIGHT turn to DAYAN. Hold over DAYAN at 3000', or as instructed by ATC.					
Alt Set: hPa		Rwy Elev: 17 hPa	Trans level: FL 130		Trans alt: 11000'
1. CAUTION: Rising terrain.					
MSA GSA VOR					



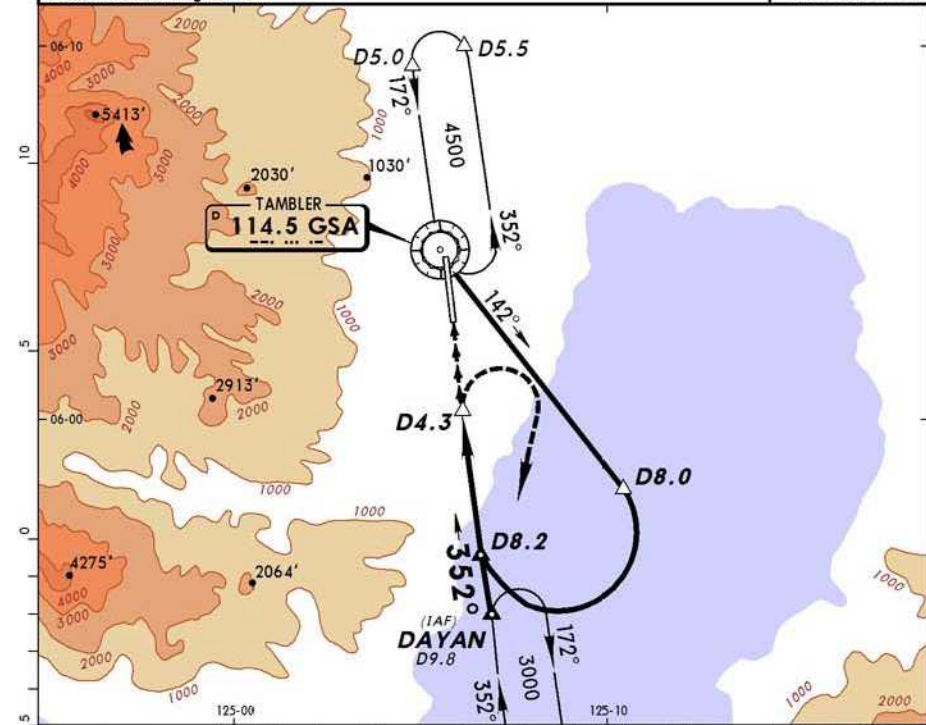
GSA DME	4.3	5.0	6.0	7.0	8.0	9.0	9.8
ALTITUDE	1260'	1490'	1810'	2130'	2450'	2770'	3000'



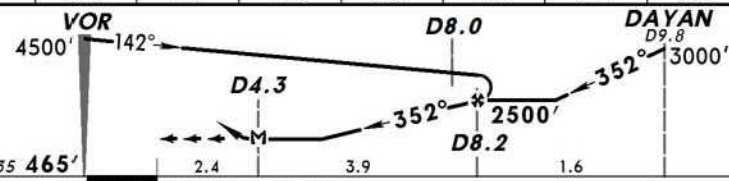
Gnd speed-Kts	70	90	100	120	140	160			
Descent Gradient	5.2%	369	474	527	632	737	843		
MAP at D4.3								REIL PAPI-L	RT DAYAN

STRAIGHT-IN LANDING RWY 35		CIRCLE-TO-LAND		No Circling
MDA(H) 1260' (795')				
A		Max Kts	MDA(H)	
B	1.6 km	100	1460' (955') - 1.9 km	
C	2.0 km	135	1460' (955') - 2.8 km	
D	2.4 km	180	1560' (1055') - 3.7 km	
		205	1560' (1055') - 4.6 km	

*TAMBLER Approach			*TAMBLER Tower		
119.1 118.2		118.4			
VOR GSA 114.5	Final Apch Crs 352°	Minimum Alt D8.2	MDA(H) 1260' (795')	Apt Elev 505'	RWY 35 465'
MISSED APCH: Make a RIGHT turn to DAYAN. Hold over DAYAN at 3000', or as instructed by ATC.					
Alt Set: hPa		Rwy Elev: 17 hPa	Trans level: FL 130		Trans alt: 11000'
1. CAUTION: Rising terrain.					
MSA GSA VOR					



GSA DME	4.3	5.0	6.0	7.0	8.2	9.0	9.8
ALTITUDE	1260'	1490'	1810'	2130'	2500'	2770'	3000'



Gnd speed-Kts	70	90	100	120	140	160			
Descent Gradient	5.2%	369	474	527	632	737	843		
MAP at D4.3								REIL PAPI-L	RT DAYAN

STRAIGHT-IN LANDING RWY 35		CIRCLE-TO-LAND		No Circling
MDA(H) 1260' (795')				
A		Max Kts	MDA(H)	
B	1.6 km	100	1460' (955') - 1.9 km	
C	2.0 km	135	1460' (955') - 2.8 km	
D	2.4 km	180	1560' (1055') - 3.7 km	
		205	1560' (1055') - 4.6 km	