

General Info

, PHL

N 10° 38' 32.9 E 122° 55' 46.6 Magnetic Variation: 0.0°W

Elevation: 25'

Public, Control Tower, IFR, No Fee, Rotating Beacon, No Customs
Fuel: Jet A-1

Time Zone Info: GMT+8:00 no DST

Runway Info

Runway 04-22 6030' x 203' concrete

Runway 04 (41.0°M) TDZE 22'

Lights: Edge, ALS

Stopway Distance 164'

Runway 22 (221.0°M) TDZE 25'

Lights: Edge, ALS

Right Traffic

Communications Info

Bacolod Tower **118.8**

Bacolod Approach Control **121.0**

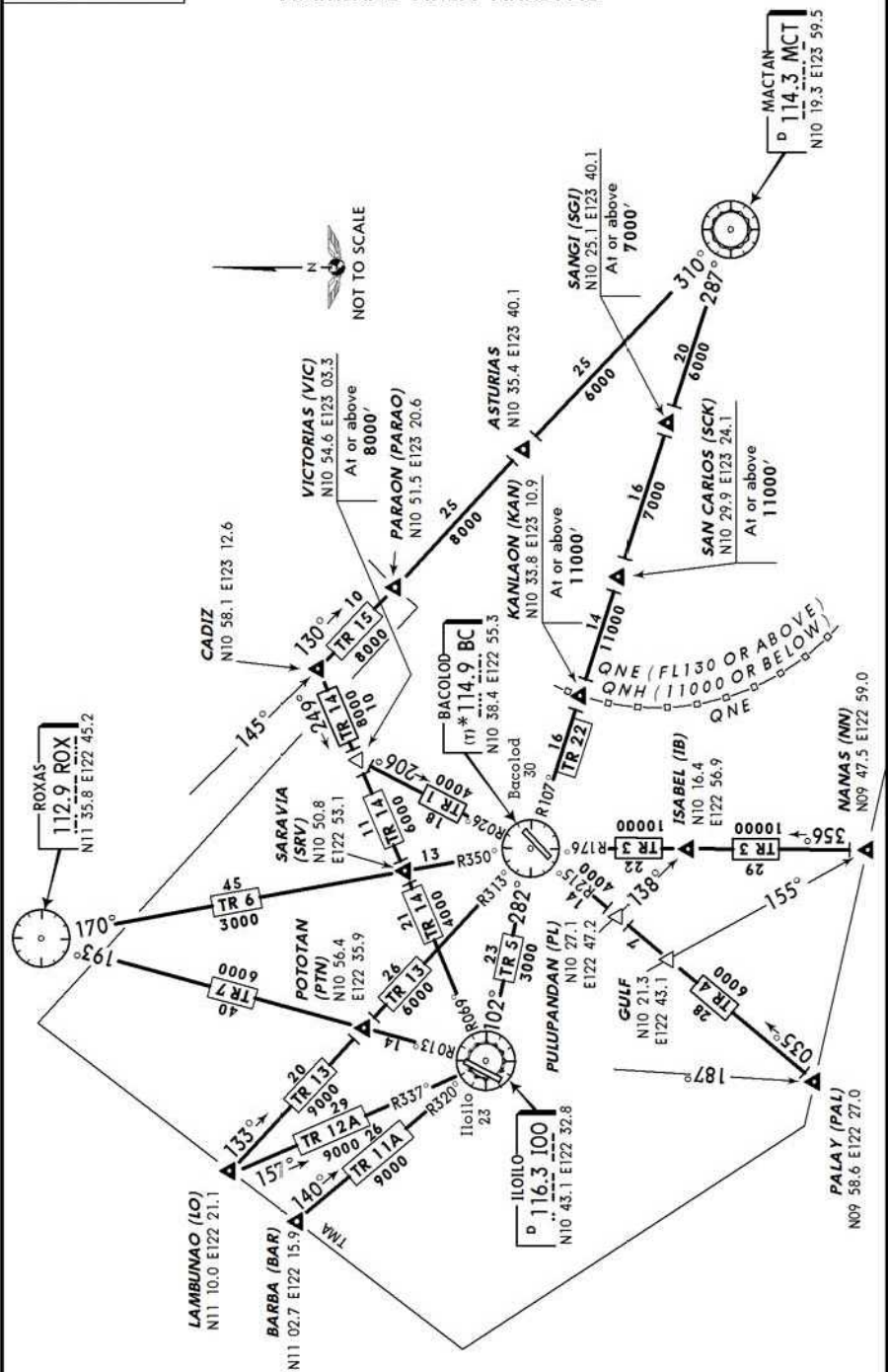
Bacolod Flight Service Station **52.05**

Bacolod Flight Service Station **38.725**

Notebook Info

TRANS LEVEL BY ATC
TRANS ALT: 3000'

TERMINAL AREA ARRIVAL



Apt Elev
25'

Trans level: FL130 Trans alt: 11000'

SID 1 VICTA DEPARTURE

ILOILO
D 116.3 100
N10 42.6 E122 32.5

VICTA
N10 55.0
E123 03.7
At or above
8000'

BACOLOD
(T) 114.9 BC
N10 38.3 E122 55.5
At or above
4000'

RWY	INITIAL CLIMB
04	360° turn to the LEFT within 5 NM.
22	180° turn to the RIGHT within 5 NM.

ROUTING

Cross BC, track out on BC R-026 to VICTA.

SID 1A VICTA DEPARTURE (FOR HIGH PERFORMANCE AIRCRAFT)

ILOILO
D 116.3 100
N10 42.6 E122 32.5

VICTA
N10 55.0
E123 03.7
At or above
8000'

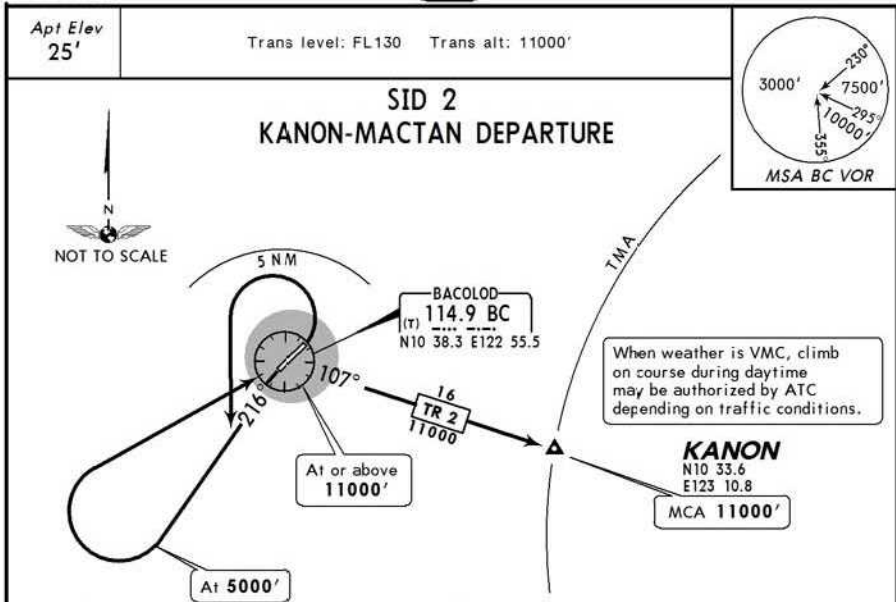
BACOLOD
(T) 114.9 BC
N10 38.3 E122 55.5

Direct distance from Bacolod Apt to:
VICTA 19 NM

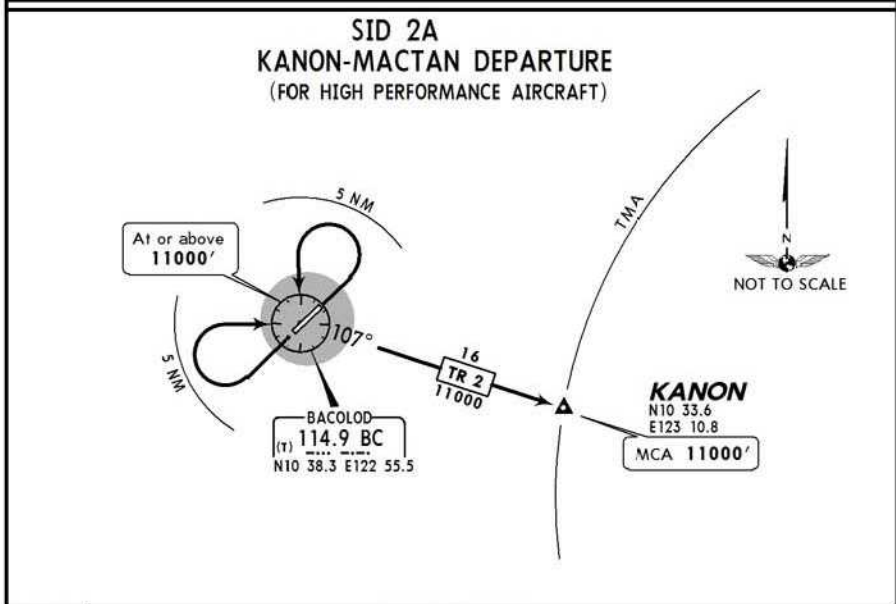
RWY	INITIAL CLIMB
04	Turn LEFT within 5 NM.
22	Turn RIGHT within 5 NM.

ROUTING

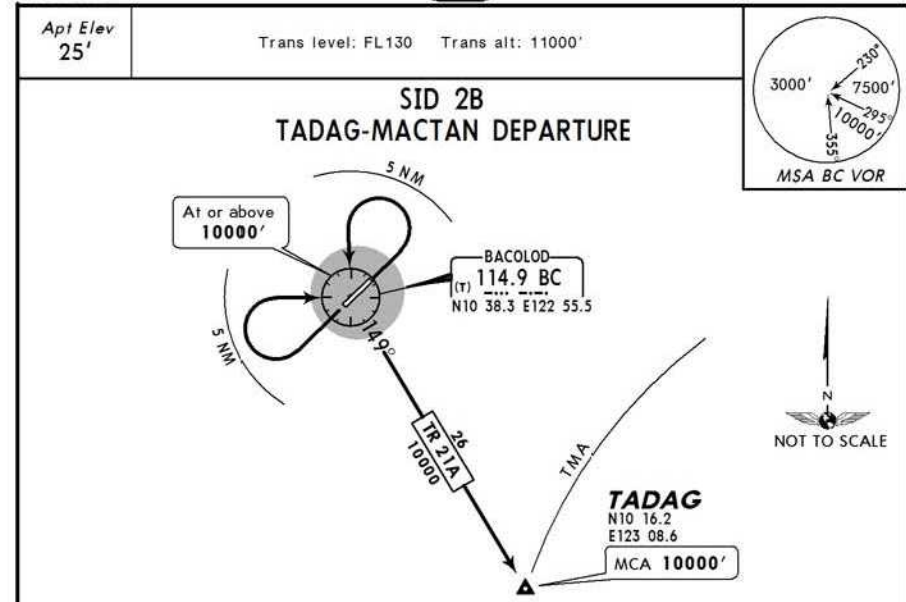
Intercept and track out on BC R-026 to VICTA.



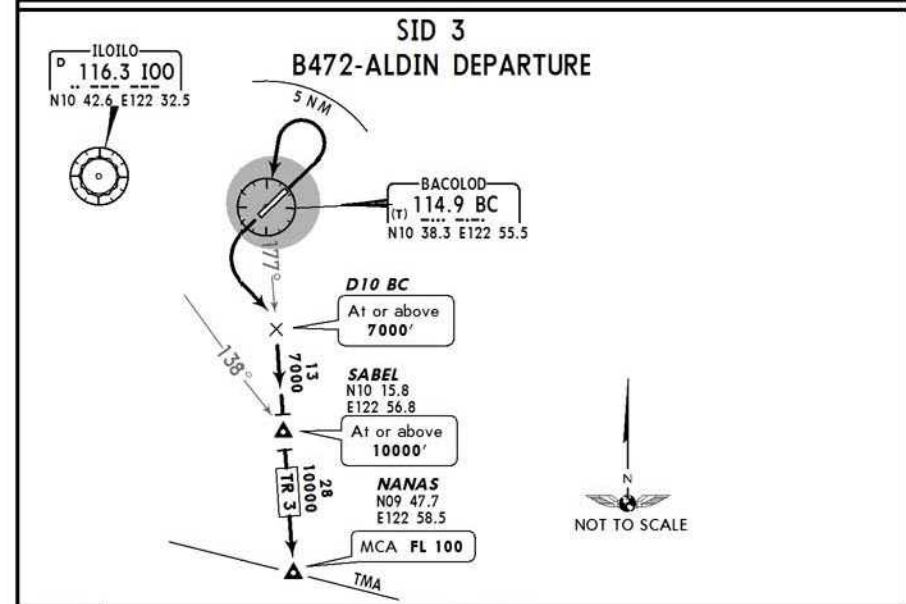
RWY	INITIAL CLIMB
04	180° turn to the LEFT within 5 NM.
22	Straight out departure.
ROUTING	
Intercept and track out on BC R-216 to 5000'. Make a climbing RIGHT turn to BC, then track out on BC R-107 to KANON.	



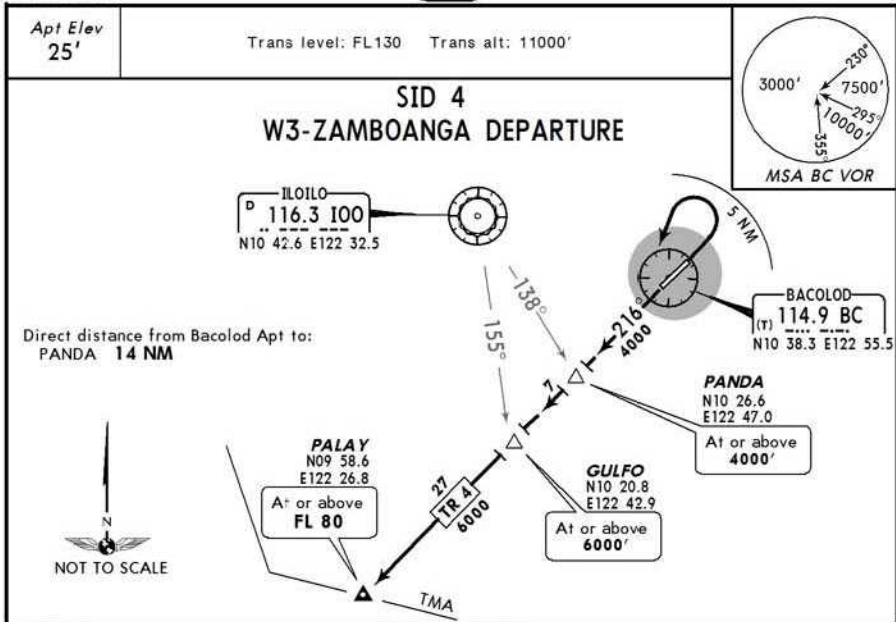
RWY	INITIAL CLIMB
04	180° turn to the LEFT within 5 NM.
22	180° turn to the RIGHT within 5 NM.
ROUTING	
Cross BC, track out on BC R-107 to KANON.	



RWY	INITIAL CLIMB
04	180° turn to the LEFT within 5 NM.
22	180° turn to the RIGHT within 5 NM.
ROUTING	
Cross BC, track out on BC R-149 to TADAG.	

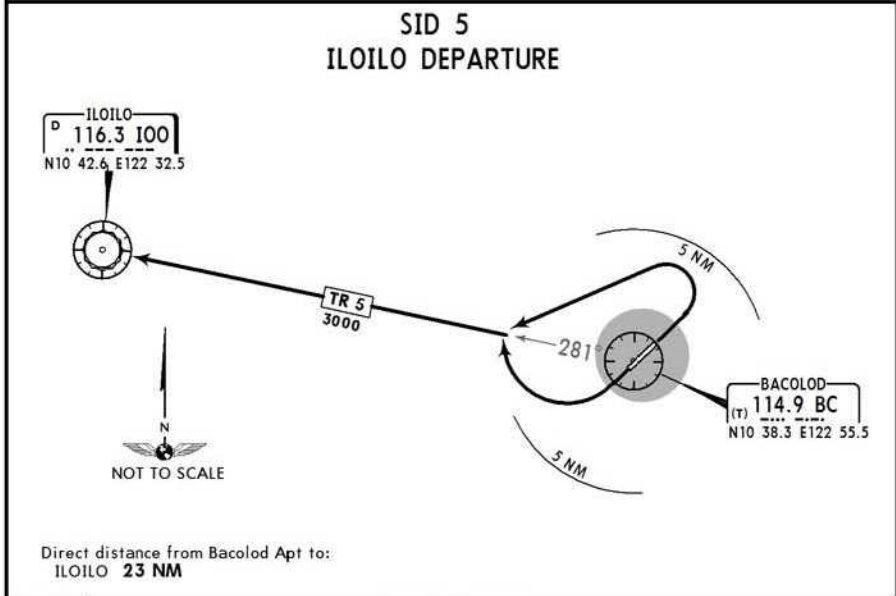


RWY	INITIAL CLIMB
04	180° turn to the LEFT within 5 NM.
22	LEFT turn.
ROUTING	
Intercept and track out on BC R-177 to NANAS via SABEL.	



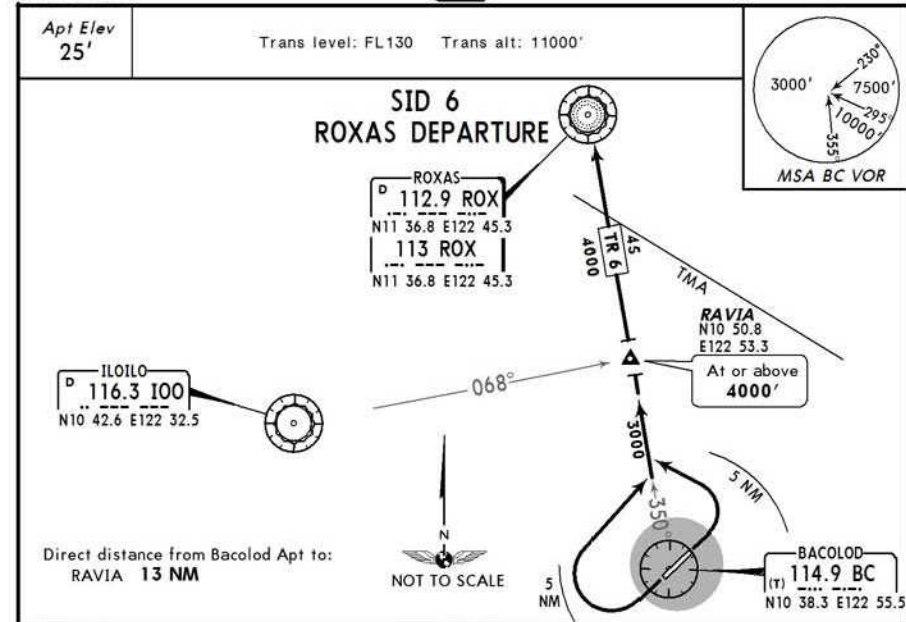
RWY	INITIAL CLIMB
04	180° turn to the LEFT within 5 NM.
22	Straight out departure.

ROUTING	
Intercept and track out on BC R-216 to PANDA. Continue climb to PALAY via GULFO.	



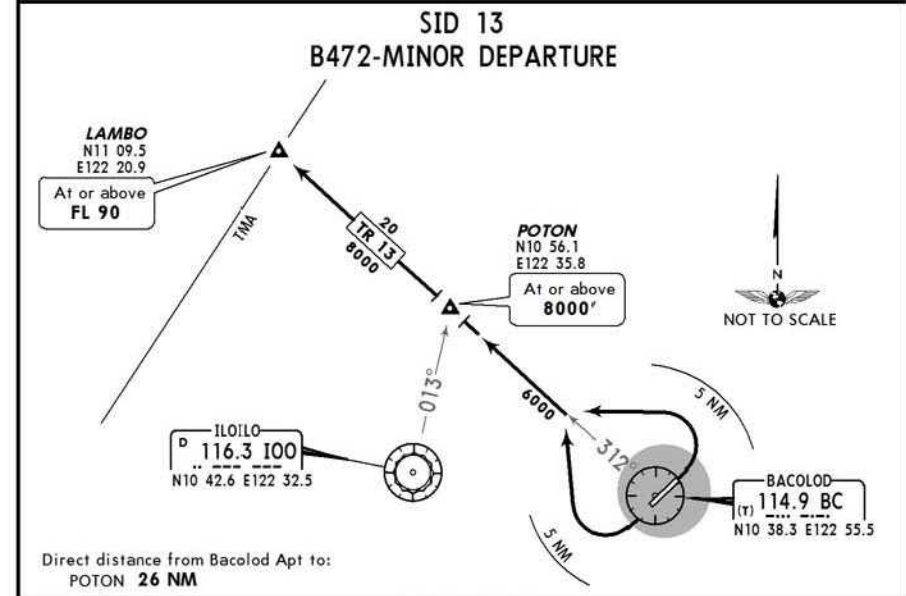
RWY	INITIAL CLIMB
04	Turn LEFT within 5 NM.
22	Turn RIGHT within 5 NM.

ROUTING	
Intercept and track out on BC R-281 to assigned level.	



RWY	INITIAL CLIMB
04	Turn LEFT within 5 NM.
22	180° turn to the RIGHT within 5 NM.

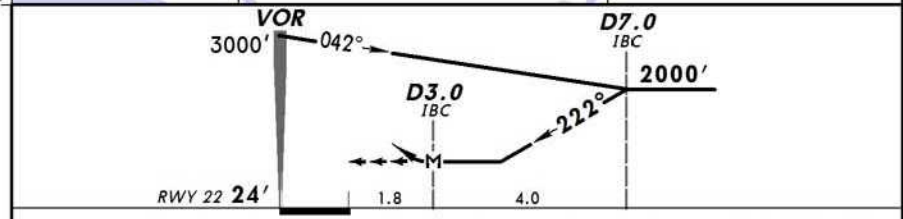
ROUTING	
Intercept and track out on BC R-350 to ROX via RAVIA.	



RWY	INITIAL CLIMB
04	Turn LEFT within 5 NM.
22	Turn RIGHT within 5 NM.

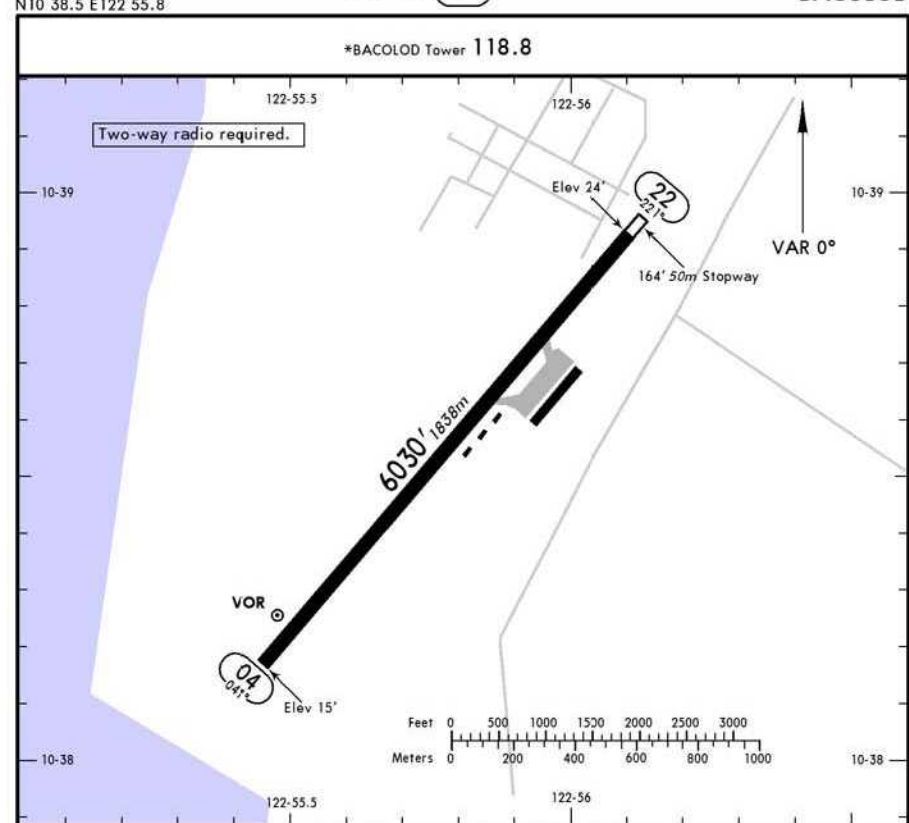
ROUTING	
Intercept and track out on BC R-312 to POTON, then to LAMBO.	

*BACOLOD Approach (R)			*BACOLOD Tower		
121.0			118.8		
LOC IBC 109.9	Final Apch Crs 222°	Minimum Alt D7.0 IBC 2000' (1976')	MDA(H) 600' (576')	Apt Elev 25'	Rwy 22 24'
MISSED APCH: Climb to BC VOR, continue climb to 3000' outbound on BC VOR R-222. Return to BC VOR, or as instructed by ATC.					
Alt Set: hPa	Rwy Elev: 1 hPa	Trans level: FL 130	Trans alt: 11000'	MSA BC VOR	



MALS PAPI	↑ to BC 114.9	↑ on 114.9 R-222
-----------	---------------	------------------

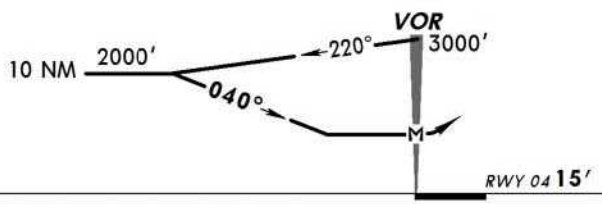
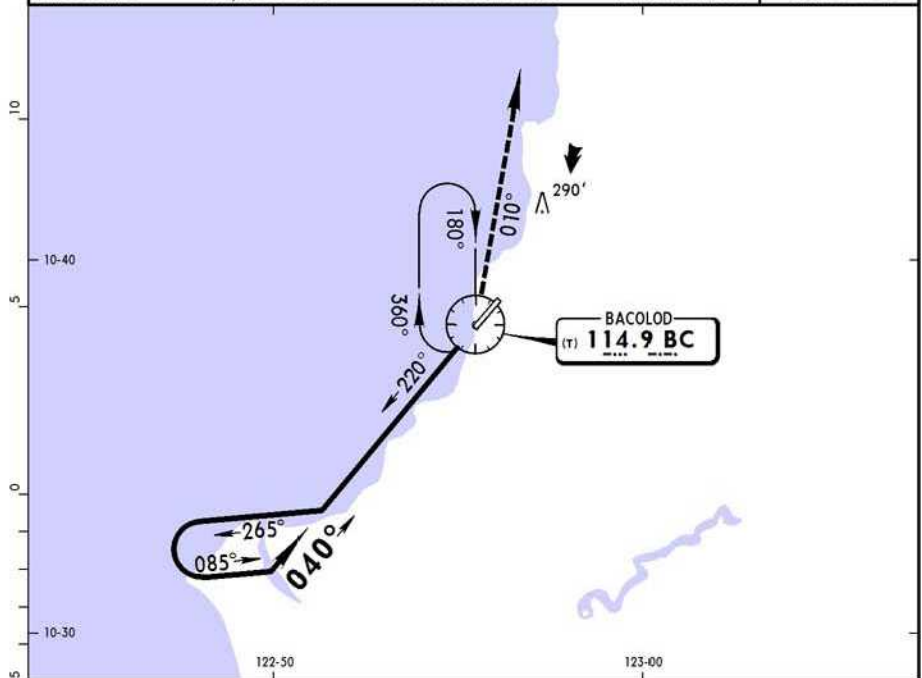
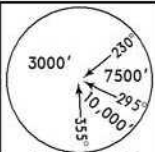
	STRAIGHT-IN LANDING RWY 22		CIRCLE-TO-LAND	
	MDA(H)	ALS out	MDA(H)	
A			600' (575') - 1.9 km	100
B	1.6 km		600' (575') - 2.8 km	135
C	2.0 km		620' (595') - 3.7 km	180
D	2.4 km		720' (695') - 4.6 km	205



RWY	ADDITIONAL RUNWAY INFORMATION	USABLE LENGTHS			WIDTH
		LANDING BEYOND Threshold	Glide Slope	TAKE-OFF	
04 22	HIRL MALS PAPI				203' 62m

	TAKE-OFF AIR CARRIER (JAA)	
	LVP must be in Force All Rwys RCLM (DAY only) or RL	All Rwys RCLM (DAY only) or RL
A	RVR 250m	RVR 400m
B		
C		
D	RVR 300m	

*BACOLOD Approach (R)			*BACOLOD Tower		
121.0			118.8		
VOR BC 114.9	Final Apch Crs 040°	No FAF	MDA(H) 480' (465')	Apt Elev 25'	Rwy 04 15'
MISSED APCH: Climb outbound on BC VOR R-010 to 3000' within 10 NM from BC VOR. Return to BC VOR, or as instructed by ATC.					
Alt Set: hPa	Rwy Elev: 1 hPa	Trans level: FL 130	Trans alt: 11000'	MSA BC VOR	

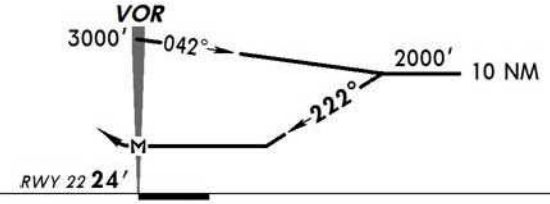
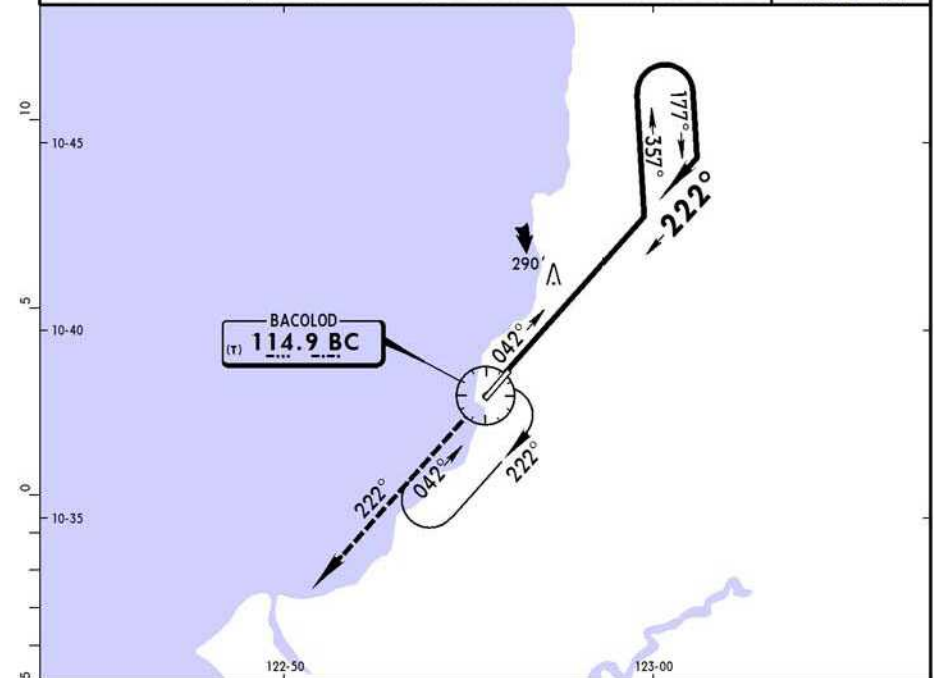
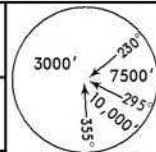


MAP at VOR				MALS PAPI	3000'	BC on 114.9	R-010
------------	--	--	--	-----------	-------	-------------	-------

STRAIGHT-IN LANDING RWY 04			CIRCLE-TO-LAND		
MDA(H) 480' (465')					
	ALS out	Max Kts	MDA(H)		
A		100	480' (455') - 1.9 km		
B	1.6 km	135	520' (495') - 2.8 km		
C		180	620' (595') - 3.7 km		
D	2.4 km	205	720' (695') - 4.6 km		

PANS OPS

*BACOLOD Approach (R)			*BACOLOD Tower		
121.0			118.8		
VOR BC 114.9	Final Apch Crs 222°	No FAF	MDA(H) 600' (576')	Apt Elev 25'	Rwy 22 24'
MISSED APCH: Climb outbound on BC VOR R-222 to 3000'. Return to BC VOR, or as instructed by ATC.					
Alt Set: hPa	Rwy Elev: 1 hPa	Trans level: FL 130	Trans alt: 11000'	MSA BC VOR	



MAP at VOR				MALS PAPI	3000'	BC on 114.9	R-222
------------	--	--	--	-----------	-------	-------------	-------

STRAIGHT-IN LANDING RWY 22			CIRCLE-TO-LAND		
MDA(H) 600' (576')					
	ALS out	Max Kts	MDA(H)		
A		100	600' (575') - 1.9 km		
B	1.6 km	135	600' (575') - 2.8 km		
C		180	620' (595') - 3.7 km		
D	3.2 km	205	720' (695') - 4.6 km		

PANS OPS