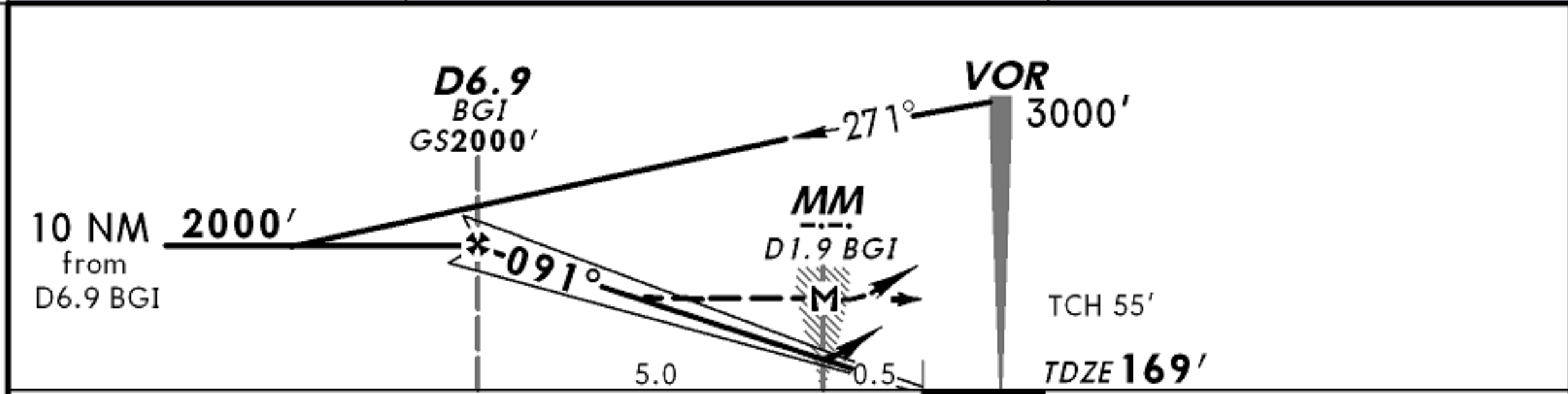
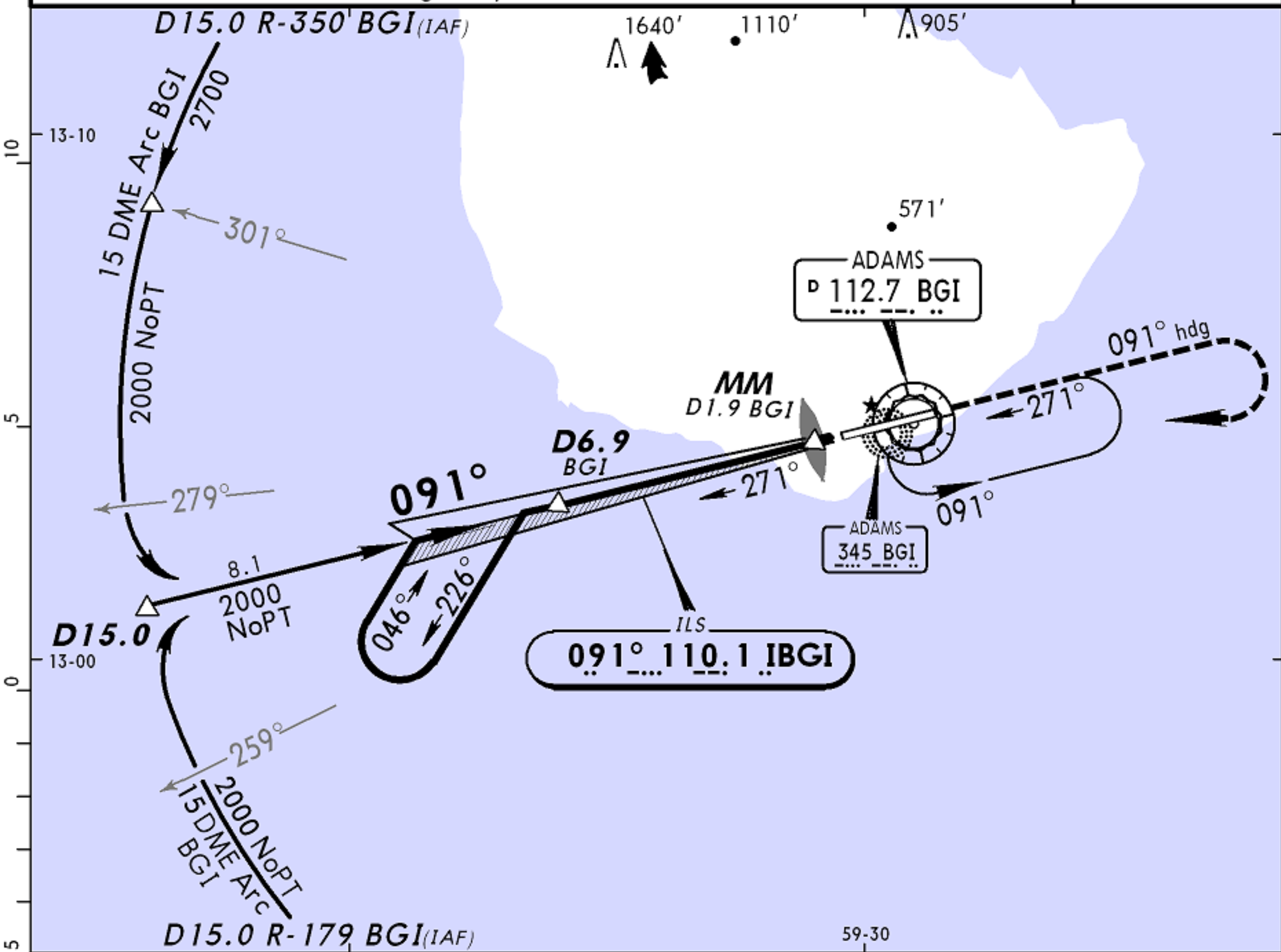


ATIS 132.72	Radar vectoring thru ADAMS Radar 120.7 121.2 128.85			ADAMS Approach (R) 129.35	ADAMS Tower 118.7	Ground 121.9
LOC IBGI 110.1	Final Apch Crs 091°	GS D6.9 2000' (1831')	ILS DA(H) 369' (200')	Apt Elev 169' TDZE 169'		3000' MSA BGI VOR
<p>MISSED APCH: Climb to 3000' on heading 091°, then turn RIGHT and proceed direct to BGI VOR and hold. GS out: If MM inoperative, initiate missed approach at D1.9 BGI VOR.</p> <p>Alt Set: hPa (IN on req) TDZ Elev: 6 hPa Trans alt: 3000'</p> <p>Trans level: FL 40 or FL 45 as assigned by ATC.</p>						



Gnd speed-Kts	70	90	100	120	140	160	HIALS	3000'	091°	RT	BGI 112.7
GS	3.00°	377	484	538	646	753	PAPI	↑	on hdg		
MAP at MM/D1.9 BGI											

STRAIGHT-IN LANDING RWY 09				CIRCLE-TO-LAND	
ILS DA(H) 369' (200')		LOC (GS out) MDA(H) 520' (351')		Not Authorized North of Rwy 09-27	
FULL	ALS out	ALS out	ALS out	Max Kts	MDA(H)
A				100	880' (711') - 1.6 km
B		0.8 km	1.6 km	135	980' (811') - 4.0 km
C	0.8 km	1.2 km		180	980' (811') - 4.4 km
D		1.2 km	2.0 km	205	980' (811') - 4.4 km