

NORTH APRON COORDINATES	
GATE NO. 1	N10 36.0 W061 20.4
2 thru 4	N10 36.0 W061 20.5
5, 6	N10 35.9 W061 20.5
7, 8	N10 35.9 W061 20.4
9 thru 11	N10 35.9 W061 20.3
12 thru 14	N10 36.0 W061 20.3
15 thru 17	N10 36.1 W061 20.3

SOUTH APRON COORDINATES	
GATE NO. 1 thru 4	N10 35.6 W061 20.6
5, 6	N10 35.5 W061 20.6
7	N10 35.5 W061 20.7
8	N10 35.5 W061 20.6
9	N10 35.5 W061 20.7
10	N10 35.5 W061 20.5
11	N10 35.6 W061 20.7
12, 14	N10 35.6 W061 20.5

Max ramp weight for the General Aviation Parking area is 26,455 lbs. (12,000 kg).

GENERAL

CAUTION: Birds in vicinity of airport.
 No VFR at night.
 High/Low intensity approach lighting.
 All medium and heavy jet acft with dual tandem landing gear must use turning bay to execute 180° turns on rwy except MD80, DC9, B727, B737 and other jet aircraft of similar type.

ADDITIONAL RUNWAY INFORMATION

RWY		USABLE LENGTHS		TAKE-OFF	WIDTH
		LANDING	BEYOND		
		Threshold	Glide Slope		
10	HIRL HIALS TDZ PAPI-L (angle 3.0°)		9641' 2939m		148'
28	HIRL	10,003' 3049m			45m

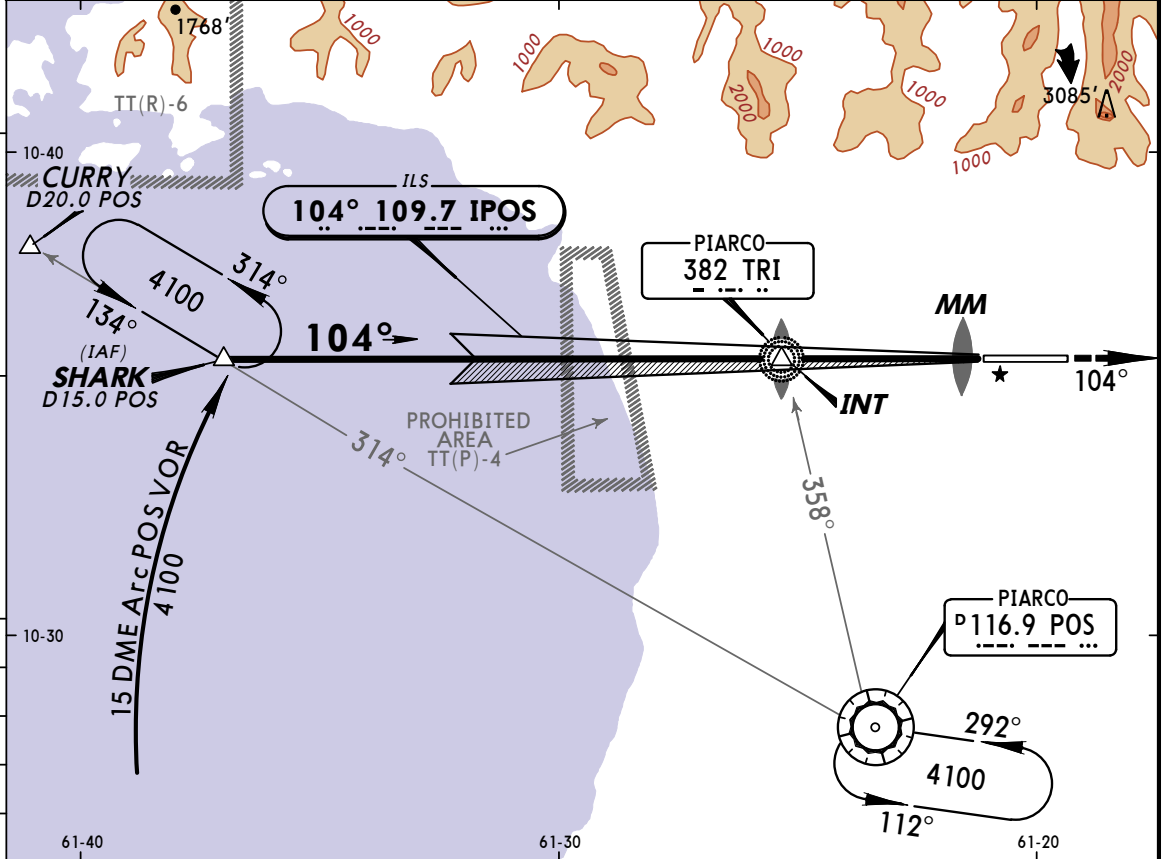
TAKE-OFF & DEPARTURE PROCEDURE

AIR CARRIER (JAA)		AIR CARRIER (FAR 121)	
LVP must be in force All Rwys RCLM (Day only) or RL	All Rwys RCLM (Day only) or RL	All Rwys Adequate Vis Ref	
A	400m	2 Eng	400m
B		3 & 4 Eng	
C			
D			

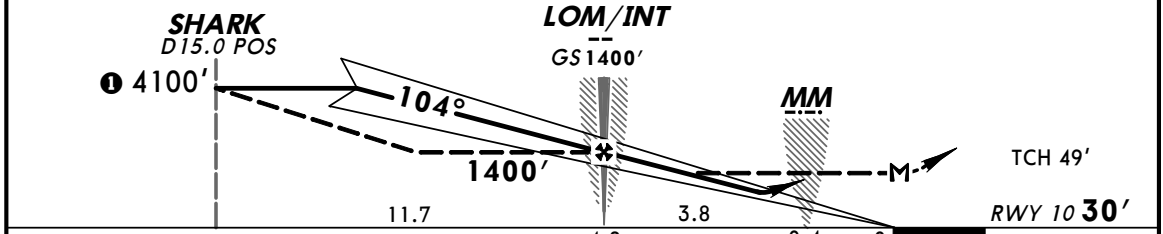
DEPARTURE PROCEDURE: Rwy 10 northbound, climb on 104° track to 4100' before turning left on course. Rwy 10 southbound, climb on 104° track to 2200' before turning right on course.
 Rwy 28 northbound, climb on 284° track to 4100'

before turning right on course, turn to be commenced within 20 DME/POS VOR.
 Rwy 28 southbound, climb on 284° track to 2200' before turning left on course, turn to be commenced within 15 DME/POS VOR.

ATIS 126.7		PIARCO Approach 119.0		PIARCO Tower 118.1		Ground 121.9	
LOC IPOS 109.7	Final Apch Crs 104°	GS LOM/INT 1400' (1370')	ILS DA(H) 230' (200')	Apt Elev 58' RWY 10 30'		4100'	
MISSED APCH: Climb on 104° to 2200', then RIGHT climbing turn to 4100' to POS VOR or as directed by ATC.							
Alt Set: hPa		Rwy Elev: 1 hPa		Trans level: FL 55		Trans alt: 4100'	
							MSA TRI LOM



1 Descent below 4100' not authorized until inbound on ILS.

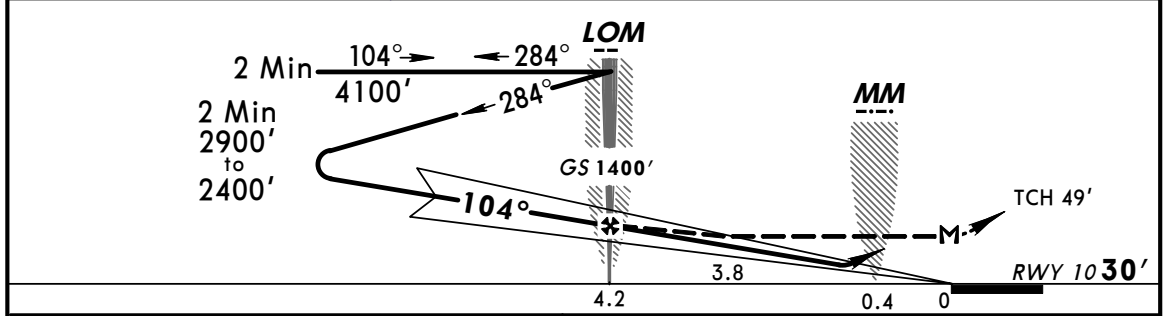
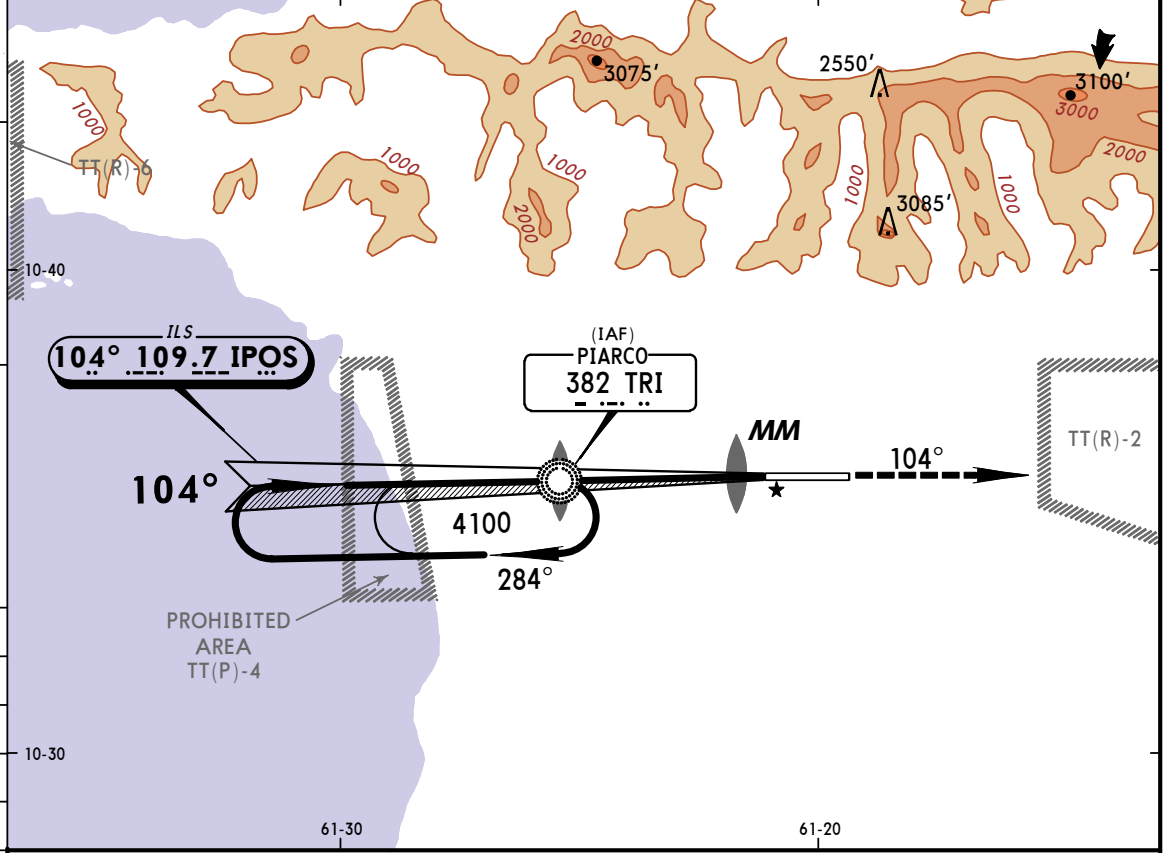


Gnd speed-Kts	70	90	100	120	140	160	HIALS PAPI	2200'	on 104° then	4100'	POS 116.9
GS	3.00°	377	484	538	646	753		861	↑	RT	
LOM/INT to MAP	4.2	3:36	2:48	2:31	2:06	1:48	1:34				

STRAIGHT-IN LANDING RWY10			
ILS DA(H) 230' (200')		LOC (GS out) MDA(H) 530' (500')	
FULL		ALS out	

A	1 NM	1 1/2 NM
B		
C		
D		

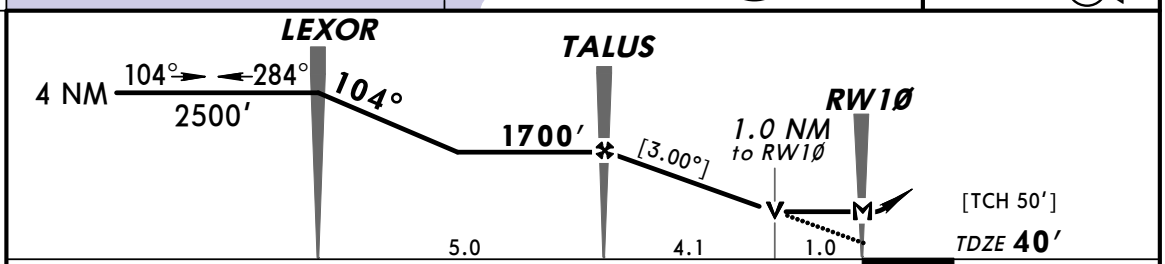
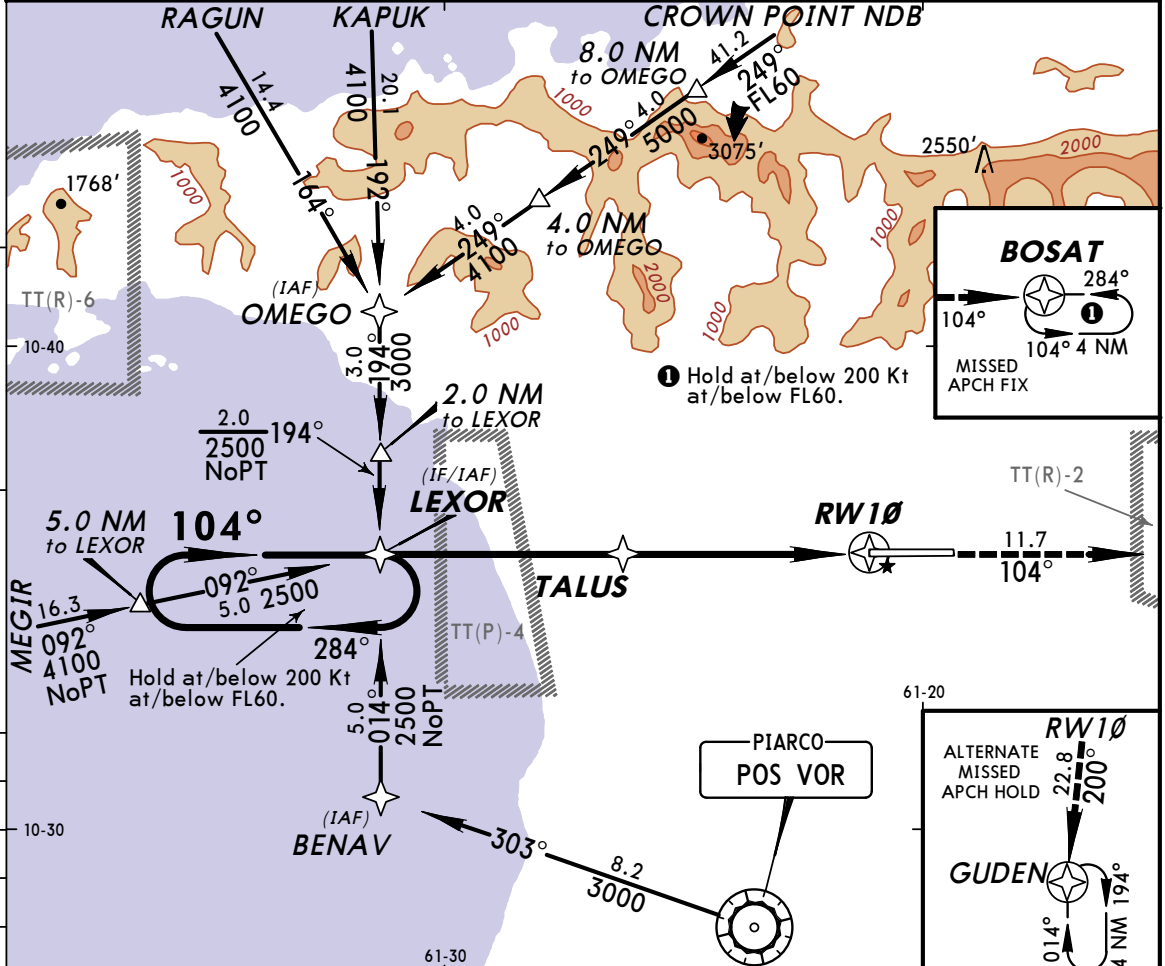
ATIS 126.7		PIARCO Approach 119.0		PIARCO Tower 118.1		Ground 121.9	
LOC IPOS 109.7	Final Apch Crs 104°	GS LOM 1400' (1370')	ILS DA(H) 230' (200')	Apt Elev 58'	Rwy 10 30'	4100'	
MISSED APCH: Climb to 4100' on 104°, RIGHT turn to TRI LOM or as directed by ATC.							
Alt Set: hPa		Rwy Elev: 1 hPa		Trans level: FL 55		Trans alt: 4100'	
							MSA TRI LOM



Gnd speed-Kts	70	90	100	120	140	160	HIALS PAPI 4100' on 104° RT TRI 382	
GS	3.00°	377	484	538	646	753		861
LOM to MAP	4.2	3:36	2:48	2:31	2:06	1:48		1:34

STRAIGHT-IN LANDING RWY10			
ILS DA(H) 230' (200')		LOC (GS out) MDA(H) 530' (500')	
FULL		ALS out	
A			
B			
C	1 NM	1 1/2 NM	
D			

ATIS 126.7		PIARCO Approach 119.0		PIARCO Tower 118.1		Ground 121.9		
RNAV	Final Apch Crs 104°	Minimum Alt TALUS 1700' (1660')	LNAV MDA(H) 420' (380')	Apt Elev 58'		TDZE 40'		
MISSED APCH: Climb to 2500' direct BOSAT and hold.							<p>4100'</p> <p>MSA RW10</p>	
Alt Set: hPa		TDZ Elev: 2 hPa		Trans level: FL 55		Trans alt: 4100'		
1. GPS required. 2. POS ILS/VOR/DME/TRI NDB not required.								

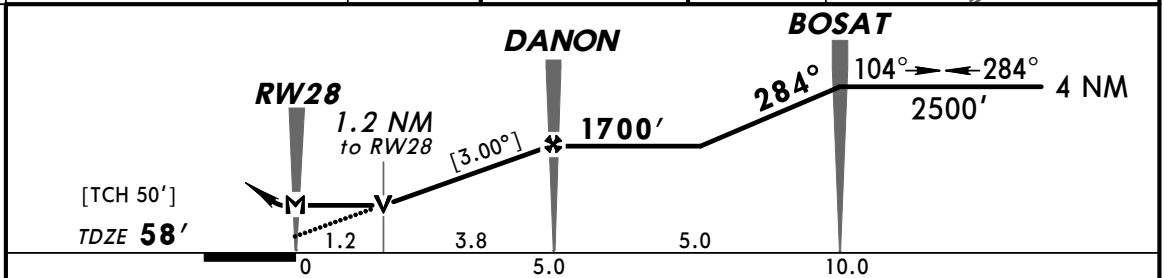
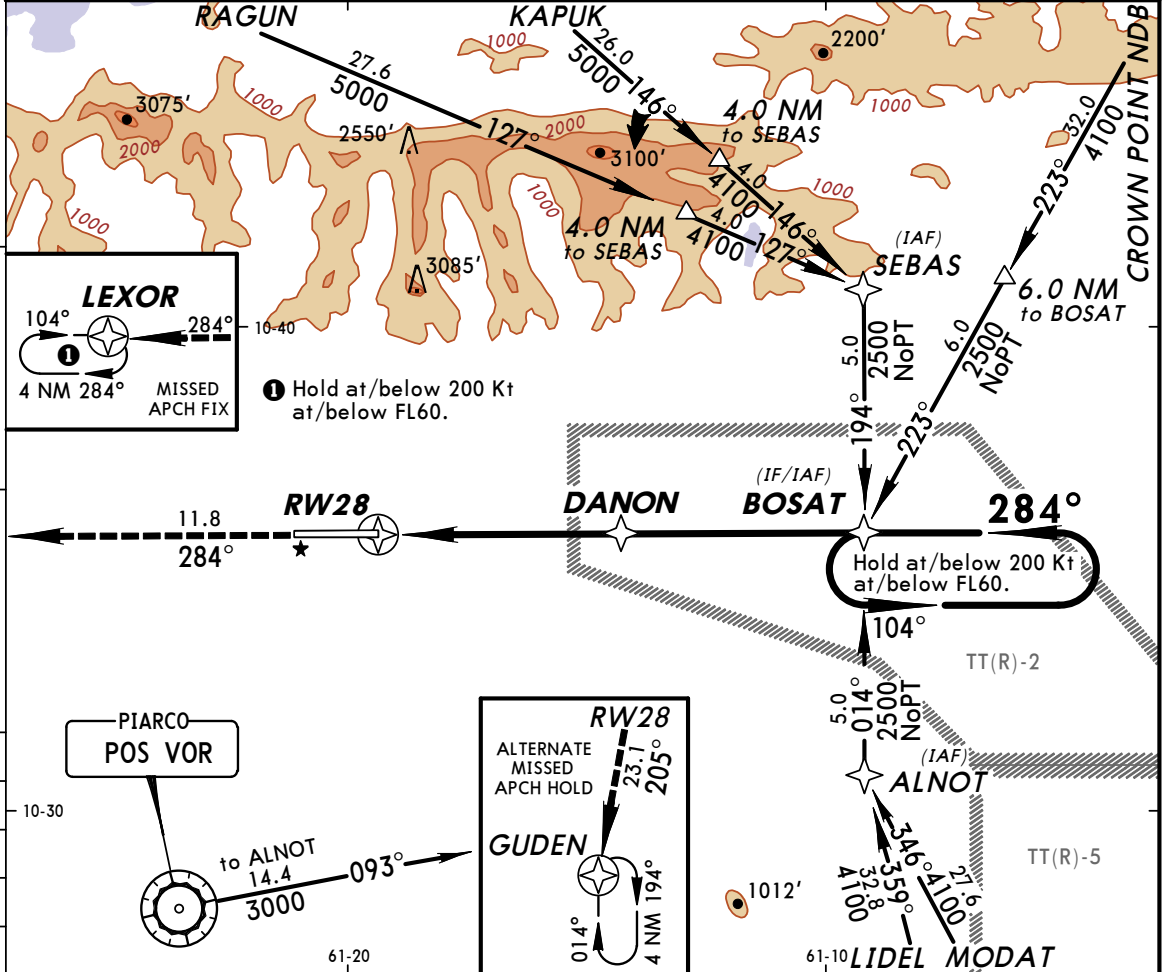


Gnd speed-Kts	70	90	100	120	140	160		2500' ↑		BOSAT
Descent angle [3.00°]	372	478	531	637	743	849				
MAP at RW10										

STRAIGHT-IN LANDING RWY 10 LNAV MDA(H) 420' (380')						CIRCLE-TO-LAND		
ALS out								
A								
B	1600m						NA	
C								
D	2000m							

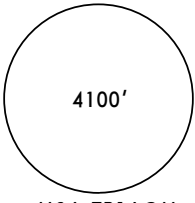
16 JUN 06 (12-2)

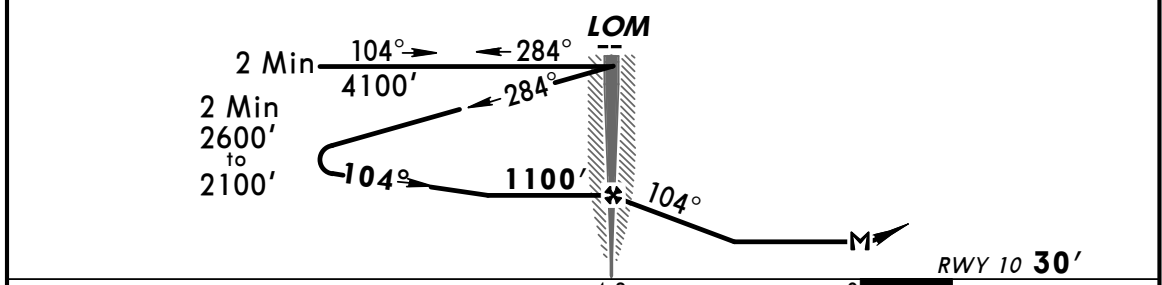
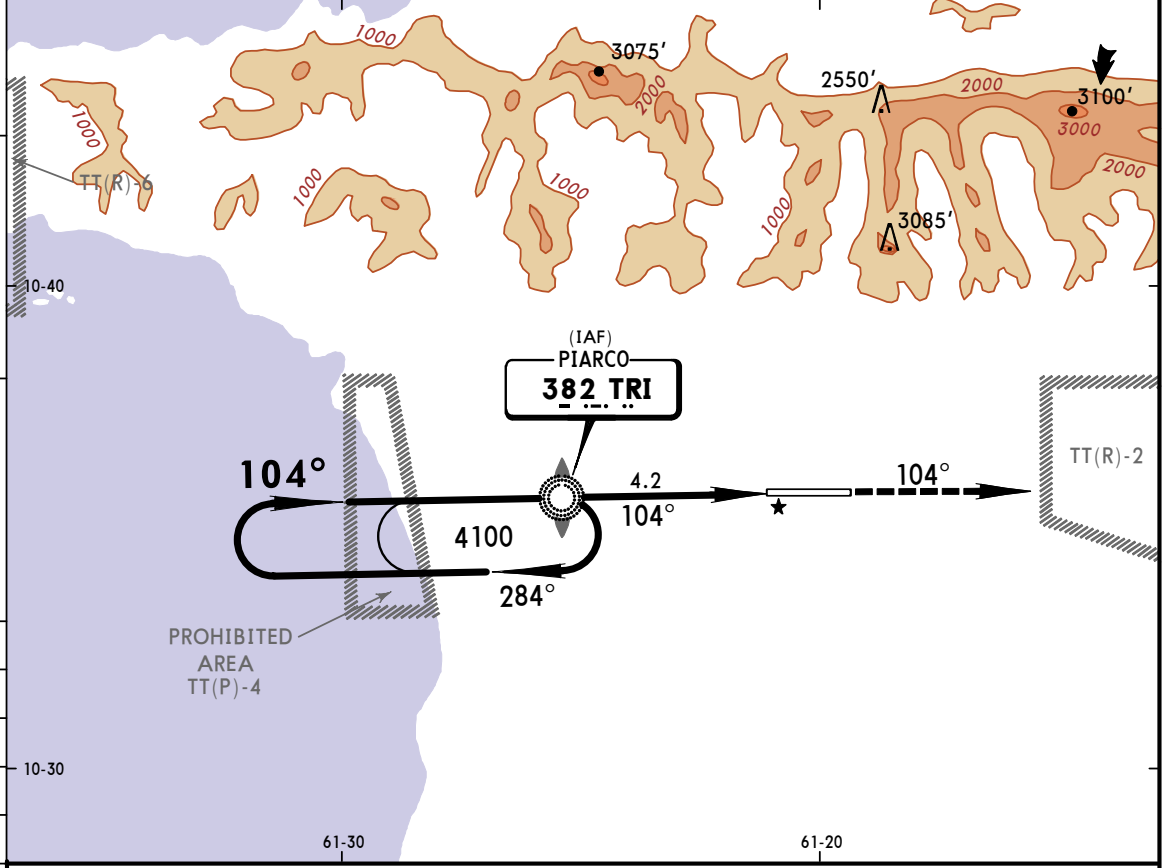
ATIS 126.7		PIARCO Approach 119.0		PIARCO Tower 118.1		Ground 121.9	
RNAV		Final Apch Crs 284°	Minimum Alt DANON 1700' (1642')	LNAV MDA(H) 480' (422')	Apt Elev 58' TDZE 58'		4100' MSA RW28
MISSED APCH: Climb to 2500' direct LEXOR and hold. Alt Set: hPa TDZ Elev: 2 hPa Trans level: FL 55 Trans alt: 4100' 1. GPS required. 2. POS VOR/DME/TRI NDB not required.							

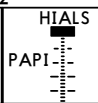



Gnd speed-Kts	70	90	100	120	140	160	2500'	D → LEXOR
Descent angle [3.00°]	372	478	531	637	743	849		
MAP at RW28								

STRAIGHT-IN LANDING RWY 28							CIRCLE-TO-LAND	
LNAV								
MDA(H) 480' (422')								
A	1600m						NA	
B								
C	2000m							
D								

ATIS 126.7		PIARCO Approach 119.0		PIARCO Tower 118.1		Ground 121.9	
NDB TRI 382	Final Apch Crs 104°	Minimum Alt LOM 1100' (1070')	MDA(H) 530' (500')	Apt Elev 58'	RWY 10 30'		
MISSED APCH: Climb to 4100' on 104°, RIGHT turn to TRI LOM or as directed by ATC.							
Alt Set: hPa		Rwy Elev: 1 hPa		Trans level: FL 55		Trans alt: 4100'	
							MSA TRI LOM



Gnd speed-Kts	70	90	100	120	140	160		4100' ↑ on 104°		TRI 382
LOM to MAP	4.2	3:36	2:48	2:31	2:06	1:48				

STRAIGHT-IN LANDING RWY10										
MDA(H) 530' (500')										
ALS out										

A										
B										
C	1½ NM									
D										