

General Info

Vladivostok, RUS

N 43° 23.9' E132° 08.8' Mag Var: 9.9°W

Elevation: 46'

Public, IFR, Control Tower, Customs, Landing Fee

Fuel: Jet A-1

Repairs: Minor Airframe, Minor Engine

Time Zone Info: GMT+10:00 uses DST

Runway Info

Runway 07L-25R 11483' x 197' concrete

Runway 07L (70.0°M) TDZE 33'

Lights: Edge, ALS

Runway 25R (250.0°M) TDZE 33'

Lights: Edge, ALS

Communications Info

ATIS **127.8**

Knevichi Tower **124.0** Secondary

Knevichi Tower **119.5**

Knevichi Taxiing Ground Control **124.0** Secondary

Knevichi Taxiing Ground Control **121.7**

Knevichi Krug Radar **126.0**

Knevichi Krug Radar **124.0** MF

Notebook Info

UHWW/VVO
KNEVICH

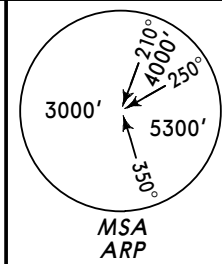
JEPPESEN
 11 APR 08 **10-2**

VLADIVOSTOK, RUSSIA
STAR

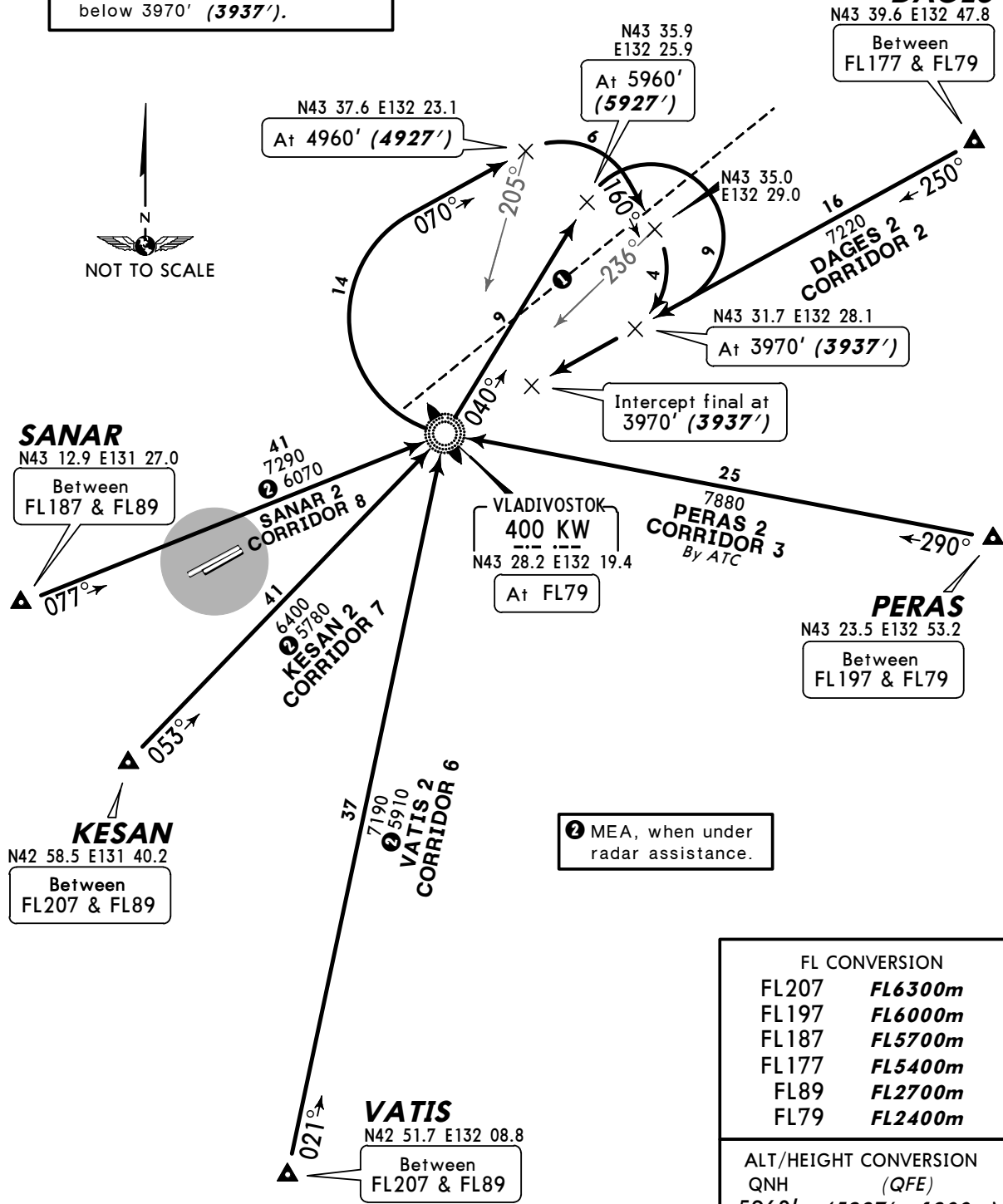
ATIS 127.8	Apt Elev 46'	Alt Set: MM (hPa on request) QNH on request (QFE) Trans level: FL79 FL89 if pressure is less than 733 MM (977.3 hPa) and is 706 MM (941.3 hPa) and above Trans alt: 5960' (5927') Crossing altitudes at airway exit points are as directed by ATC.
----------------------	------------------------	---

**DAGES 2, KESAN 2
 PERAS 2, SANAR 2, VATIS 2
 RWY 25R ARRIVALS**

① 240° to ARP between 21.6 NM and 8.1 NM do not fly north below 3970' **(3937')**.



DAGES
 N43 39.6 E132 47.8
 Between
 FL177 & FL79



SANAR
 N43 12.9 E131 27.0
 Between
 FL187 & FL89

KESAN
 N42 58.5 E131 40.2
 Between
 FL207 & FL89

VATIS
 N42 51.7 E132 08.8
 Between
 FL207 & FL89

FL CONVERSION	
FL207	FL6300m
FL197	FL6000m
FL187	FL5700m
FL177	FL5400m
FL89	FL2700m
FL79	FL2400m

ALT/HEIGHT CONVERSION	
QNH	(QFE)
5960'	(5927' - 1800m)
4960'	(4927' - 1500m)
3970'	(3937' - 1200m)

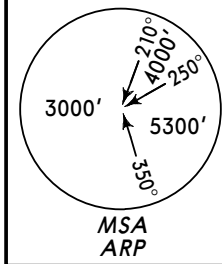
UHWW/VVO
KNEVICH

JEPESEN
 11 APR 08 (10-2A)

VLADIVOSTOK, RUSSIA
STAR

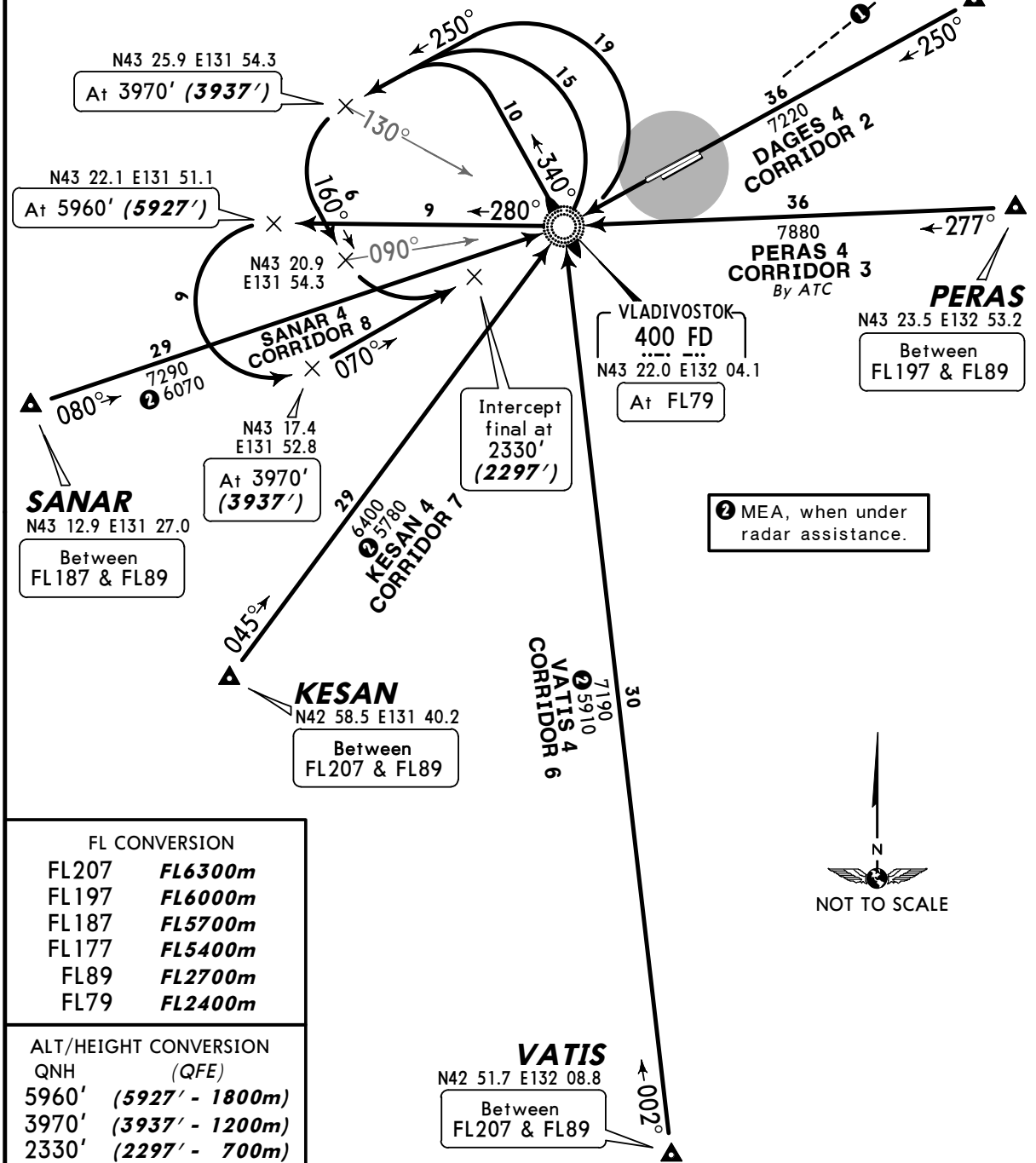
ATIS 127.8	Apt Elev 46'	Alt Set: MM (hPa on request) QNH on request (QFE) Trans level: FL79 FL89 if pressure is less than 733 MM (977.3 hPa) and is 706 MM (941.3 hPa) and above Trans alt: 5960' (5927') Crossing altitudes at airway exit points are as directed by ATC.
---------------	-----------------	---

**DAGES 4, KESAN 4
 PERAS 4, SANAR 4, VATIS 4
 RWY 07L ARRIVALS**



① 240° to ARP between 21.6 NM and 8.1 NM do not fly north below 3970' (**3937'**).

DAGES
 N43 39.6 E132 47.8
 Between FL177 & FL79



FL CONVERSION	
FL207	FL6300m
FL197	FL6000m
FL187	FL5700m
FL177	FL5400m
FL89	FL2700m
FL79	FL2400m

ALT/HEIGHT CONVERSION	
QNH	(QFE)
5960'	(5927' - 1800m)
3970'	(3937' - 1200m)
2330'	(2297' - 700m)

VATIS
 N42 51.7 E132 08.8
 Between FL207 & FL89



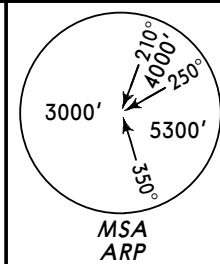
UHHW/VVO
KNEVICH

JEPPESEN
 11 APR 08 (10-2B)

VLADIVOSTOK, RUSSIA
RADAR STAR

ATIS 127.8	Apt Elev 46'	Alt Set: MM (hPa on request) QNH on request (QFE) Trans level: FL79 FL89 if pressure is less than 733 MM (977.3 hPa) and is 706 MM (941.3 hPa) and above Trans alt: 5960' (5927') Crossing altitudes at airway exit points are as directed by ATC.
----------------------	------------------------	---

KESAN 5
SANAR 5, VATIS 5
RWY 07L RADAR ARRIVALS



SANAR
 N43 12.9 E131 27.0
 Between
 FL118 & FL89

082°

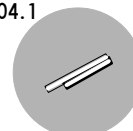
SANAR 5
CORRIDOR 8

Intercept final at
 2330' (**2297'**)

N43 19.2
 E131 57.9

N43 17.8 E131 58.0

VLADIVOSTOK
400 FD
 N43 22.0 E132 04.1



KESAN
 N42 58.5 E131 40.2
 Between
 FL118 & FL89

041°

KESAN 5
CORRIDOR 7

VATIS 5
CORRIDOR 6

FL CONVERSION	
FL118	FL3600m
FL89	FL2700m
FL79	FL2400m

ALT/HEIGHT CONVERSION	
QNH	(QFE)
5960'	(5927' - 1800m)
2330'	(2297' - 700m)

VATIS
 N42 51.7 E132 08.8
 Between
 FL118 & FL89

352°

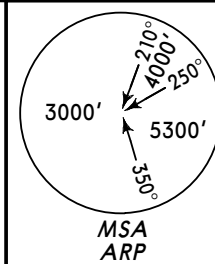
UHWW/VVO
KNEVICH

JEPPESEN
 11 APR 08 (10-2C)

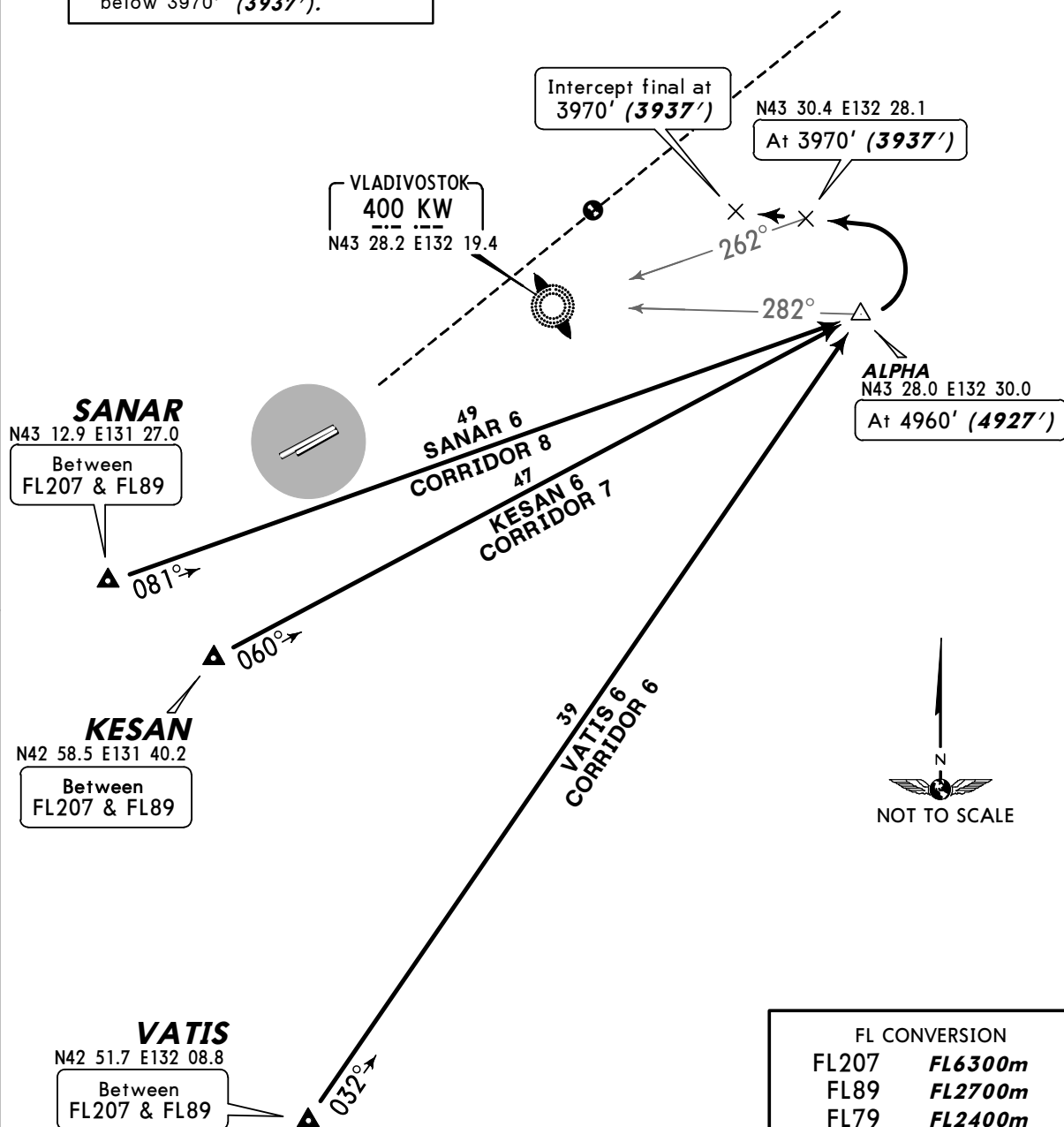
VLADIVOSTOK, RUSSIA
RADAR STAR

ATIS 127.8	Apt Elev 46'	Alt Set: MM (hPa on request) QNH on request (QFE) Trans level: FL79 FL89 if pressure is less than 733 MM (977.3 hPa) and is 706 MM (941.3 hPa) and above Trans alt: 5960' (5927') Crossing altitudes at airway exit points are as directed by ATC.
----------------------	------------------------	---

KESAN 6
SANAR 6, VATIS 6
RWY 25R RADAR ARRIVALS



① 240° to ARP between 21.6 NM and 8.1 NM do not fly north below 3970' (**3937'**).



FL CONVERSION	
FL207	FL6300m
FL89	FL2700m
FL79	FL2400m

ALT/HEIGHT CONVERSION	
QNH	(QFE)
5960'	(5927' - 1800m)
4960'	(4927' - 1500m)
3970'	(3937' - 1200m)

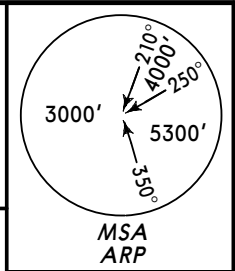
UHWV/VVO
KNEVICH

JEPPESEN
 11 APR 08 **10-3**

VLADIVOSTOK, RUSSIA
SID

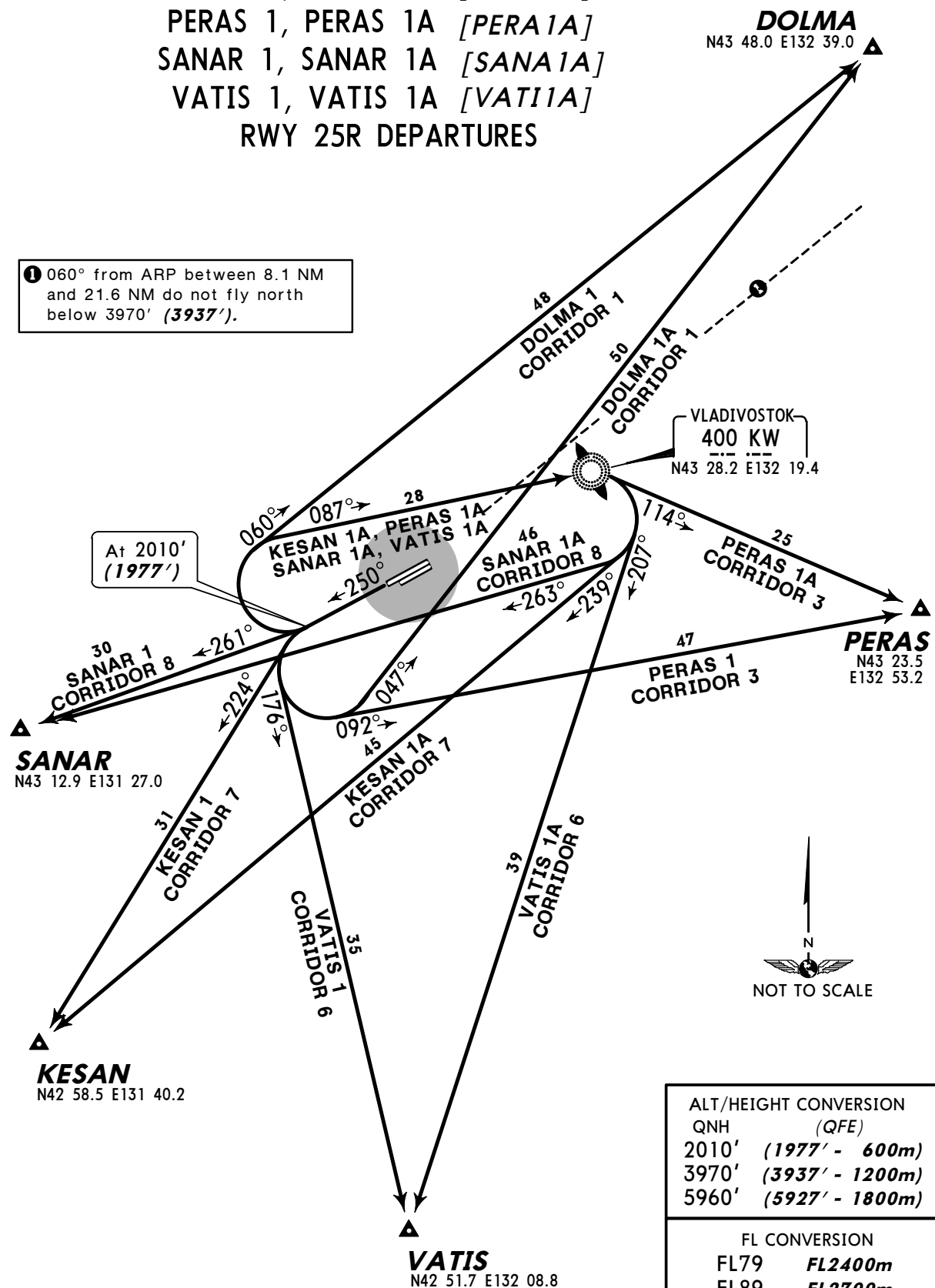
Apt Elev 46'
 QNH on request (QFE)
 Trans level: FL79
 FL89 if pressure is less than 733 MM (977.3 hPa) and is 706 MM (941.3 hPa) and above
 Trans alt: 5960' (5927')

1. Take-off shall be carried out with noise abatement procedures.
2. Crossing altitudes at airway entry points are as directed by ATC.



DOLMA 1, DOLMA 1A [DOLM1A]
KESAN 1, KESAN 1A [KESA1A]
PERAS 1, PERAS 1A [PERA1A]
SANAR 1, SANAR 1A [SANA1A]
VATIS 1, VATIS 1A [VATI1A]
RWY 25R DEPARTURES

① 060° from ARP between 8.1 NM and 21.6 NM do not fly north below 3970' (3937').



ALT/HEIGHT CONVERSION	
QNH	(QFE)
2010'	(1977' - 600m)
3970'	(3937' - 1200m)
5960'	(5927' - 1800m)

FL CONVERSION	
FL79	FL2400m
FL89	FL2700m

UHWW/VVO
KNEVICH

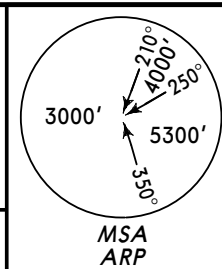
JEPESEN
 11 APR 08 (10-3A)

VLADIVOSTOK, RUSSIA
SID

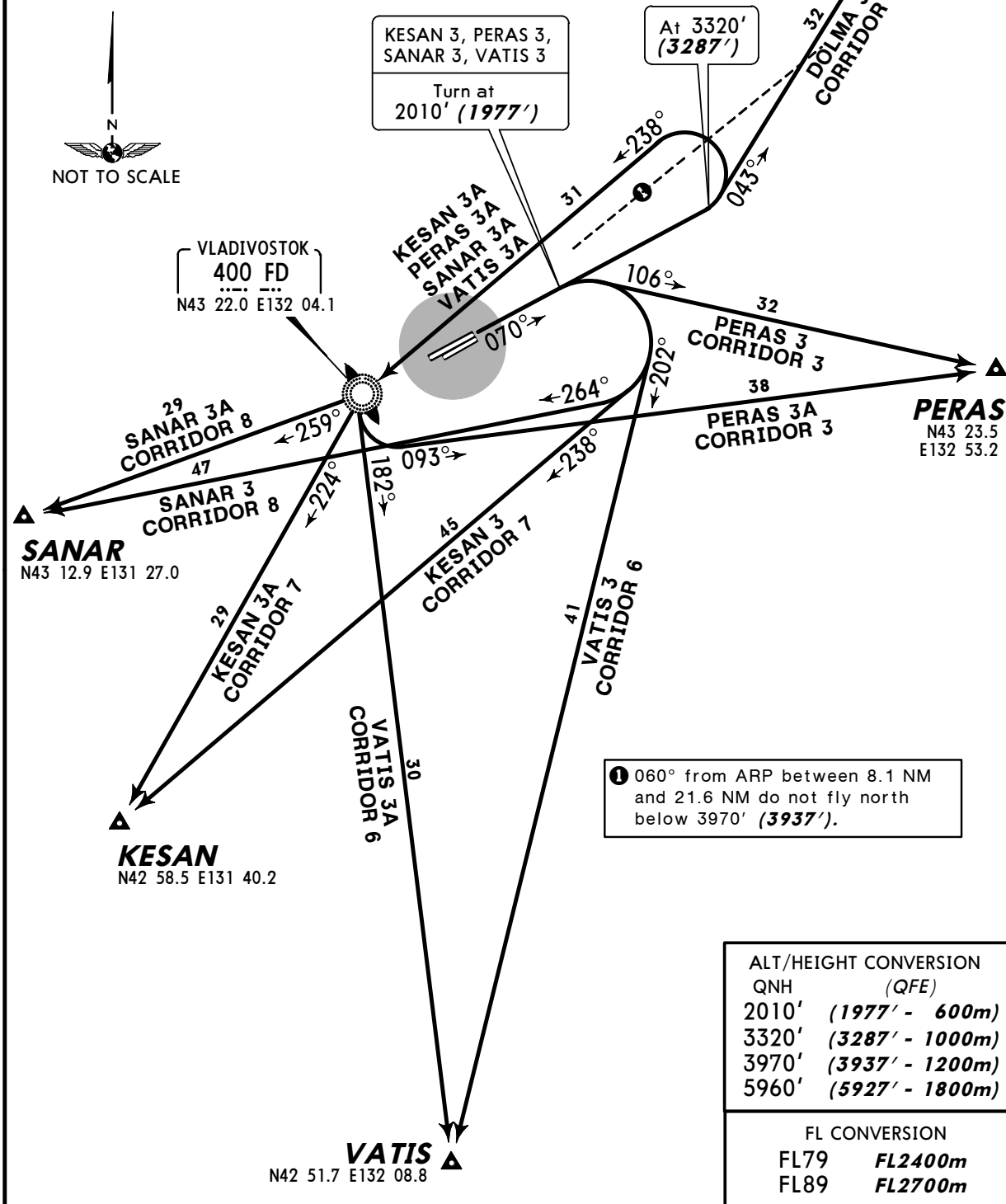
Apt Elev
46'

QNH on request (QFE)
 Trans level: FL79
 FL89 if pressure is less than 733 MM (977.3 hPa)
 and is 706 MM (941.3 hPa) and above
 Trans alt: 5960' (5927')

1. Take-off shall be carried out with noise abatement procedures.
2. Crossing altitudes at airway entry points are as directed by ATC.



DOLMA 3
KESAN 3, KESAN 3A [KESA3A]
PERAS 3, PERAS 3A [PERA3A]
SANAR 3, SANAR 3A [SANA3A]
VATIS 3, VATIS 3A [VATI3A]
RWY 07L DEPARTURES



① 060° from ARP between 8.1 NM and 21.6 NM do not fly north below 3970' (3937').

ALT/HEIGHT CONVERSION	
QNH	(QFE)
2010'	(1977' - 600m)
3320'	(3287' - 1000m)
3970'	(3937' - 1200m)
5960'	(5927' - 1800m)

FL CONVERSION	
FL79	FL2400m
FL89	FL2700m

UHWW/VVO

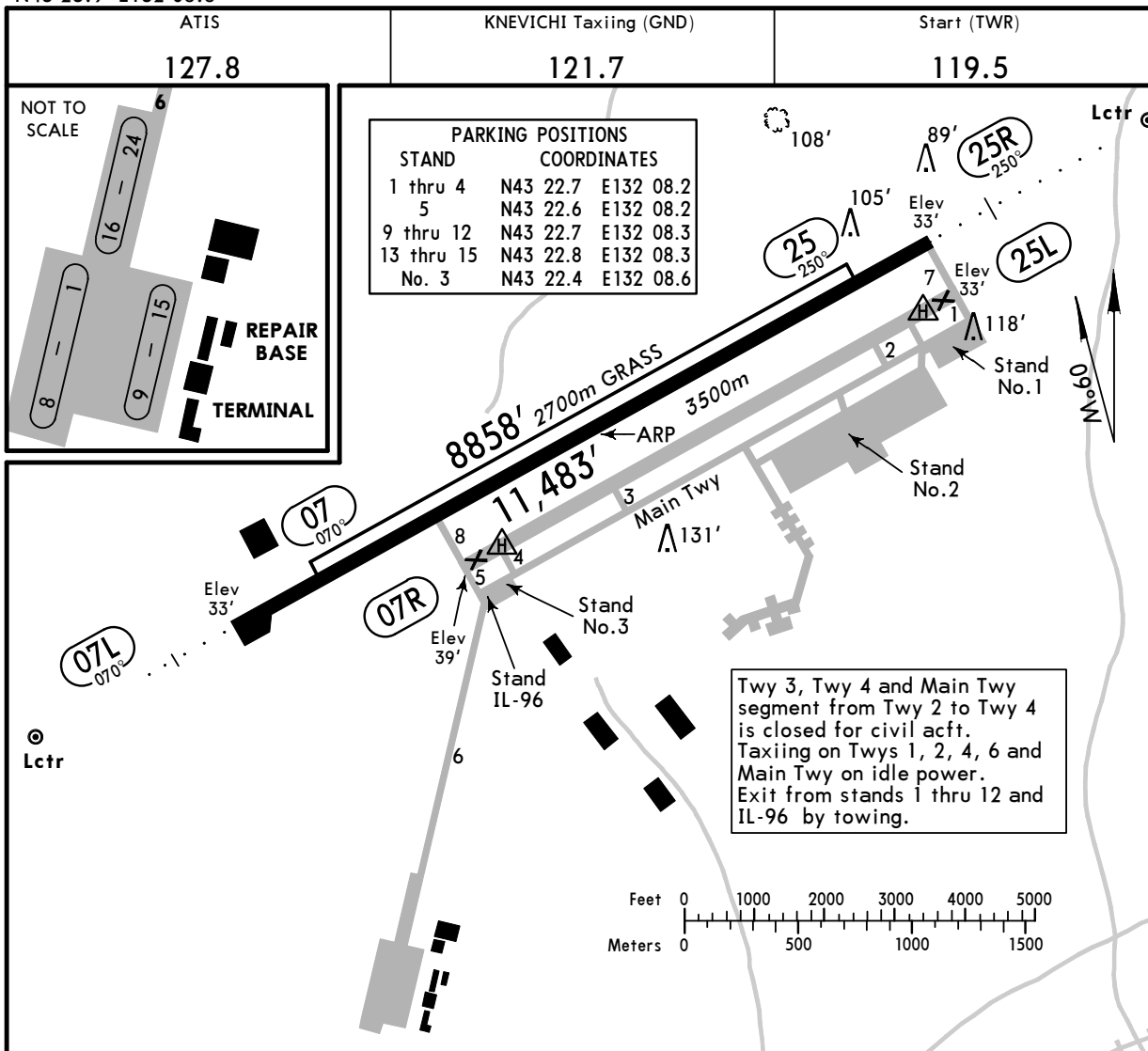
Apt Elev **46'**
 N43 23.9 E132 08.8



27 MAR 09 **(10-9)**

VLADIVOSTOK, RUSSIA

KNEVICH I



RWY	USABLE LENGTHS		TAKE-OFF	WIDTH
	Threshold	Glide Slope		
07 25				197' 60m
07L 25R	RL (50m) ALS	RVR	11,155' 3400m	197' 60m
	RL (50m) ALS PAPI-L (3.0°)	RVR		
07R 25L				197' 60m

- ① First 328'/100m unusable for take-off.
- ② Rwy available for taxiing only. Prohibited for low engines acct.

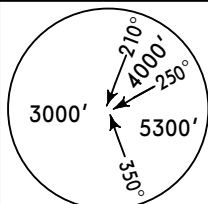
TAKE-OFF	
AIR CARRIER (JAA)	
Rwy 07L/25R	
LVP must be in force RCLM (DAY only) or RL	RCLM (DAY only) or RL
A	
B	250m
C	
D	300m

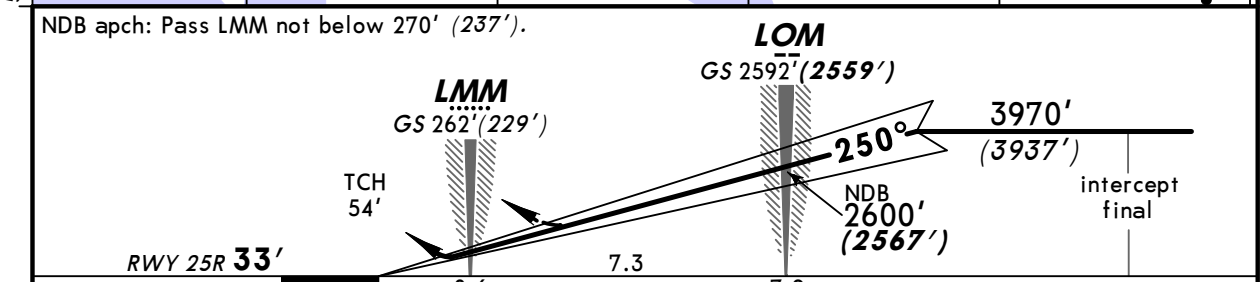
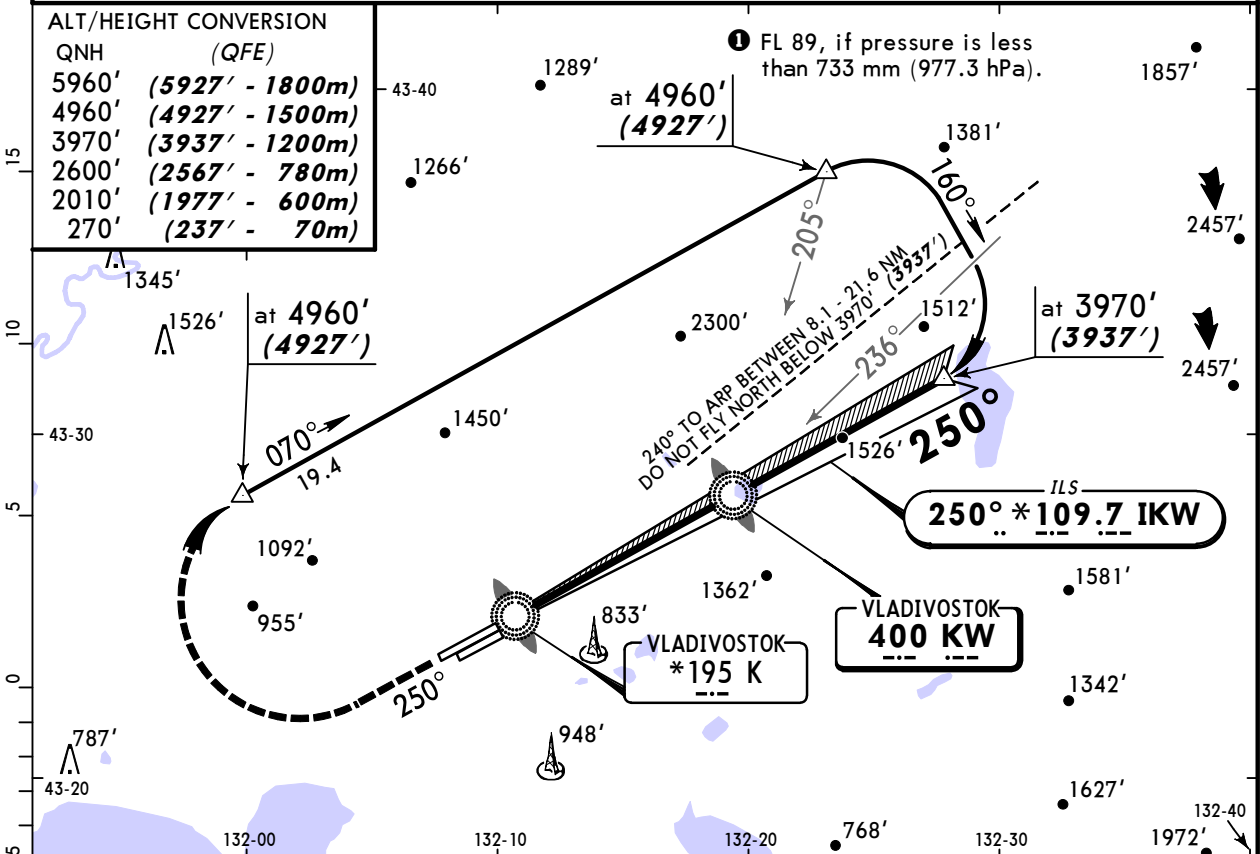
CHANGES: Helipads added.

UHHW/VVO
KNEVICH I

JEPPesen
27 MAR 09 (11-1)

VLADIVOSTOK, RUSSIA
ILS or 2 NDB Rwy 25R

ATIS 127.8		KNEVICH I Krug (R) 126.0	KNEVICH I Tower 119.5	KNEVICH I Start (TWR) 119.5	Ground 121.7
LOC IKW *109.7	Final Apch Crs 250°	GS LOM 2592' (2559')	ILS DA(H) 233' (200')	Apt Elev 46'	RWY 33'
NDB KW 400		Minimum Alt LOM 2600' (2567')	NDB MDA(H) 560' (527')		
MISSED APCH: Climb on 250° to 2010' (1977'), then turn RIGHT onto 070° climbing to 4960' (4927'), then according to chart.					 MSA Airport
Alt Set: MM (hPa on req)		QNH on req (QFE)		Trans level: FL 79	Trans alt: 5960' (5927')



Gnd speed-Kts	70	90	100	120	140	160	ALS	2010' (1977')	on 250°	070°	4960' (4927')
ILS GS 3.00° or NDB Desc Grad 5.2%	377	484	538	646	753	861	PAPI	↑	RT	↑	

STRAIGHT-IN LANDING RWY 25R		NDB	
ILS	LOC (GS out)	MDA(H) 560' (527')	ALS out
DA(H) 233' (200')			
FULL	ALS out		
A			
B			
C	1200m	NOT AUTHORIZED	2700m
D			

UHWV/VVO
KNEVICH

JEPPESEN
27 MAR 09 (16-1)

VLADIVOSTOK, RUSSIA
2 NDB Rwy 07L

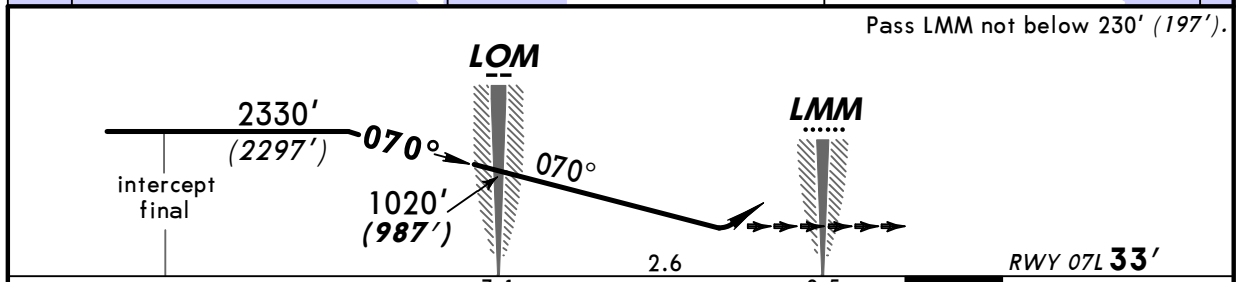
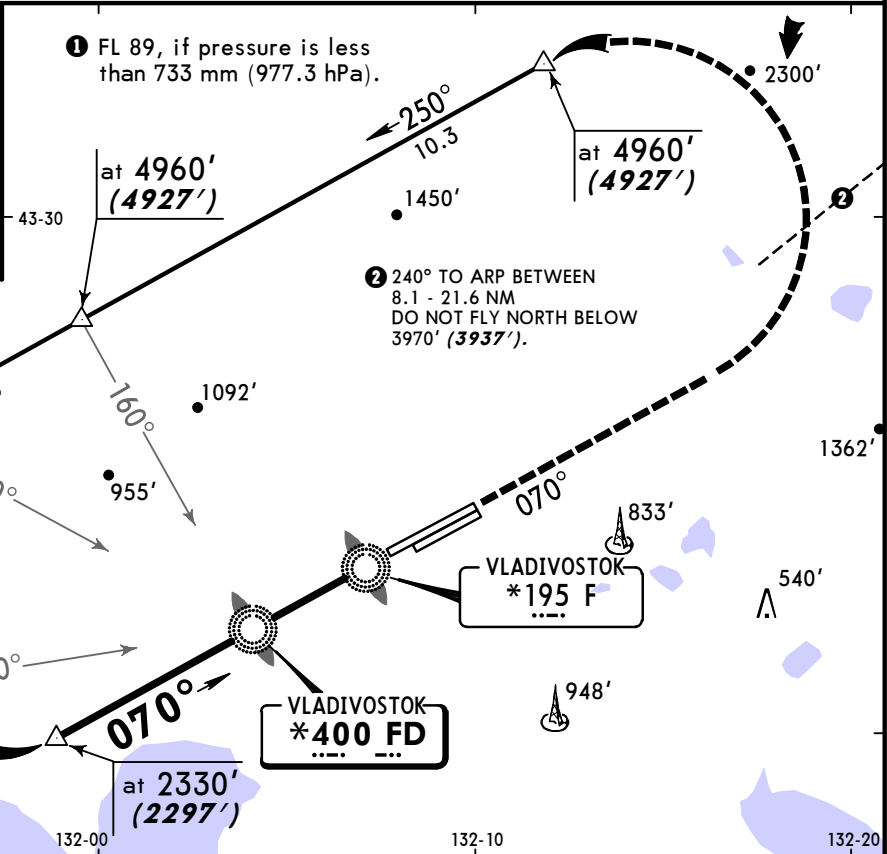
BRIEFING STRIP™

ATIS	KNEVICH Krug (R)	KNEVICH Tower	KNEVICH Start (TWR)	Ground
127.8	126.0	119.5	119.5	121.7
NDB FD *400	Final Apch Crs 070°	Minimum Alt LOM 1020' (987')	MDA(H) 440' (407')	Apt Elev 46' RWY 33'
<p>MISSED APCH: Climb on 070° to 3320' (3287'), then turn LEFT onto 250° climbing to 4960' (4927'), then according to chart.</p>				<p>MSA Airport</p>

Alt Set: MM (hPa on req) QNH on req (QFE) Trans level: FL 79 ① Trans alt: 5960' (5927')

ALT/HEIGHT CONVERSION

QNH	(QFE)
5960'	(5927' - 1800m)
4960'	(4927' - 1500m)
3970'	(3937' - 1200m)
3320'	(3287' - 1000m)
2330'	(2297' - 700m)
1020'	(987' - 300m)
230'	(197' - 60m)



Gnd speed-Kts	70	90	100	120	140	160	ALS	3320' (3287')	on 070°	250°	4960' (4927')
Descent Gradient 4.9%	356	457	508	610	711	813	⋮	↑		LT	↑

STRAIGHT-IN LANDING RWY 07L

MDA(H) 440' (407')

ALS out

PANS OPS

A	2000m
B	
C	
D	