

10-2

10-3

TRANS LEVEL: FL150
TRANS ALT: 13500'

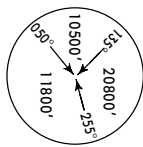
TRANS LEVEL: FL150
TRANS ALT: 13500'

**ROMEO, SIMARA
ARRIVALS**
(RWY 02)

**DHARKE 1A, DHARKE 1B
DEPARTURES**
(RWY 20)

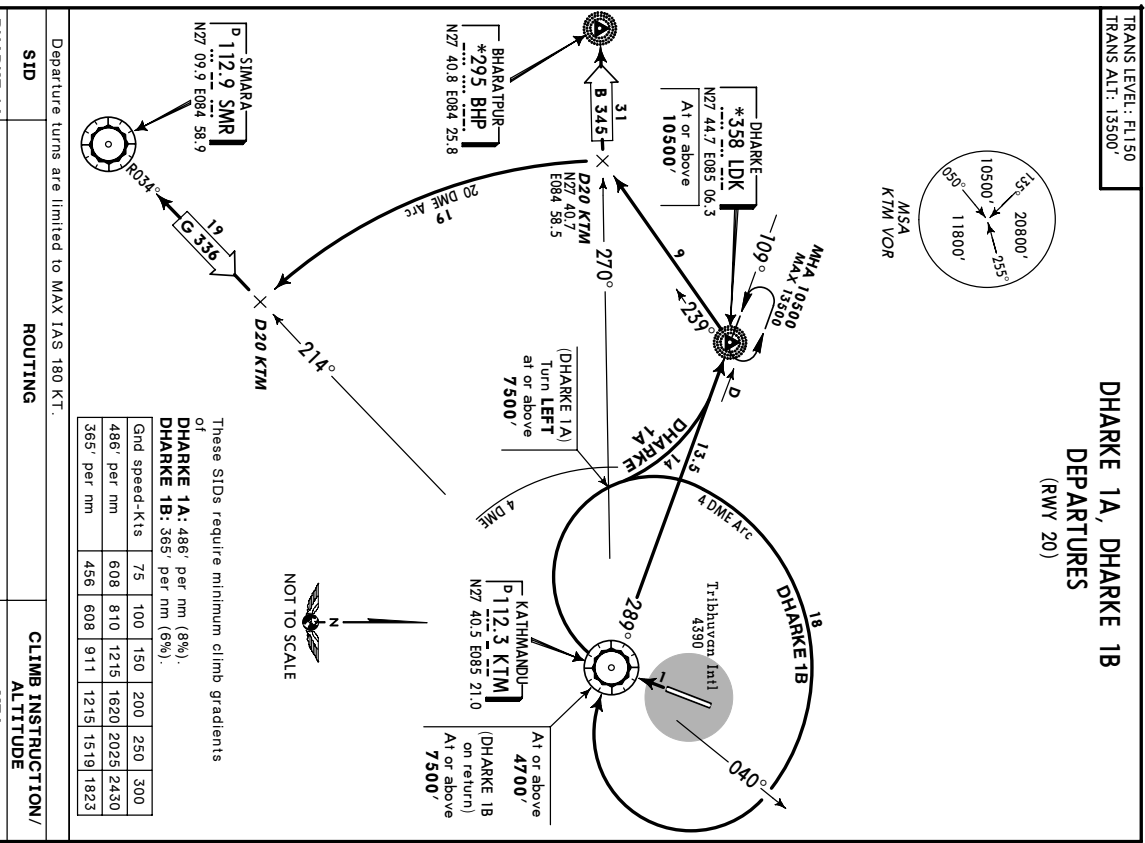
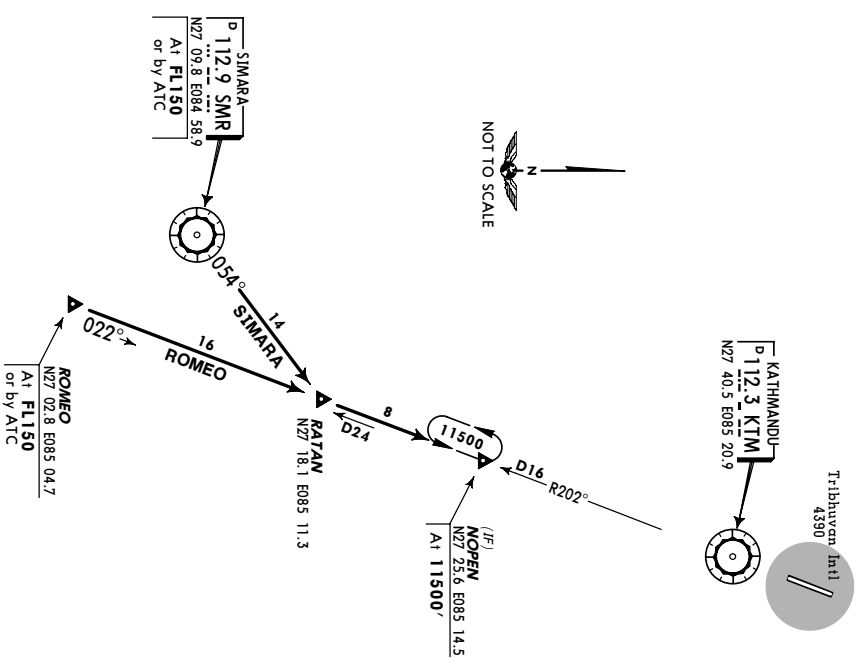
**KATHMANDU, NEPAL
TRIBHUVAN INTL**

**KATHMANDU, NEPAL
TRIBHUVAN INTL**



MSA
KTM VOR

Follow ATC Descent Clearance Instruction but do not descend below Minimum Safety Profile.



These SIDs require minimum climb gradients of

DHARKE 1A: 486' per nm (8%).
DHARKE 1B: 365' per nm (6%).

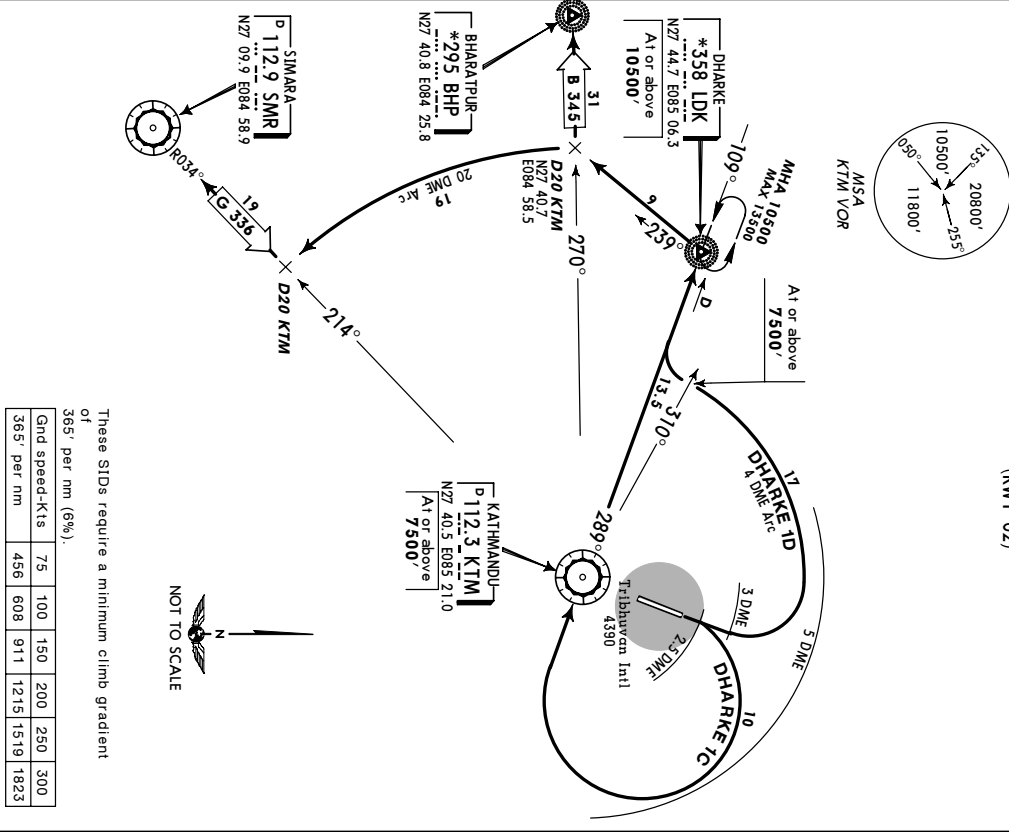
Gnd speed-Kts	75	100	150	200	250	300
486' per nm	608	810	1215	1620	2025	2430
365' per nm	456	608	911	1215	1519	1823

STAR	ROUTING	ALTITUDE
ROMEO	At Romeo Int turn RIGHT, intercept KTM R-202 inbound via Ratan Int to Nopen Int.	Cross Romeo Int at FL150 or by ATC, Nopen Int at 11500',
SIMARA	Intercept SMR R-054 to Ratan Int, intercept KTM R-202 inbound to Nopen Int.	Cross SMR VORDME at FL150 or by ATC, Nopen Int at 11500'.

SID	ROUTING	CLIMB INSTRUCTION/ ALTITUDE
DHARKE 1A	Straight ahead to KTM VORDME, turn RIGHT (re-maining within 4 DME), when crossing KTM R-270 turn LEFT, intercept KTM R-289 to LDK Lctr. Then via B 345 to BHP NDB or via G 336 to SMR VORDME.	Climb to MEA. Cross KTM VORDME at or above 4700', KTM R-270 at or above 7500', LDK Lctr at or above 10500'.
DHARKE 1B	Straight ahead to KTM VORDME, turn RIGHT, proceed along 4 DME arc, after crossing KTM R-040 turn RIGHT to KTM VORDME, intercept KTM R-289 to LDK Lctr. Then via B 345 to BHP NDB or via G 336 to SMR VORDME.	Climb to MEA. Cross KTM VORDME at or above 4700' and (on re-turn) at or above 7500', LDK Lctr at or above 10500'.

SID
KATHMANDU, NEPAL
 TRIBHUVAN INTL

DHARKE 1C, DHARKE 1D
 DEPARTURES
 (RWY 02)

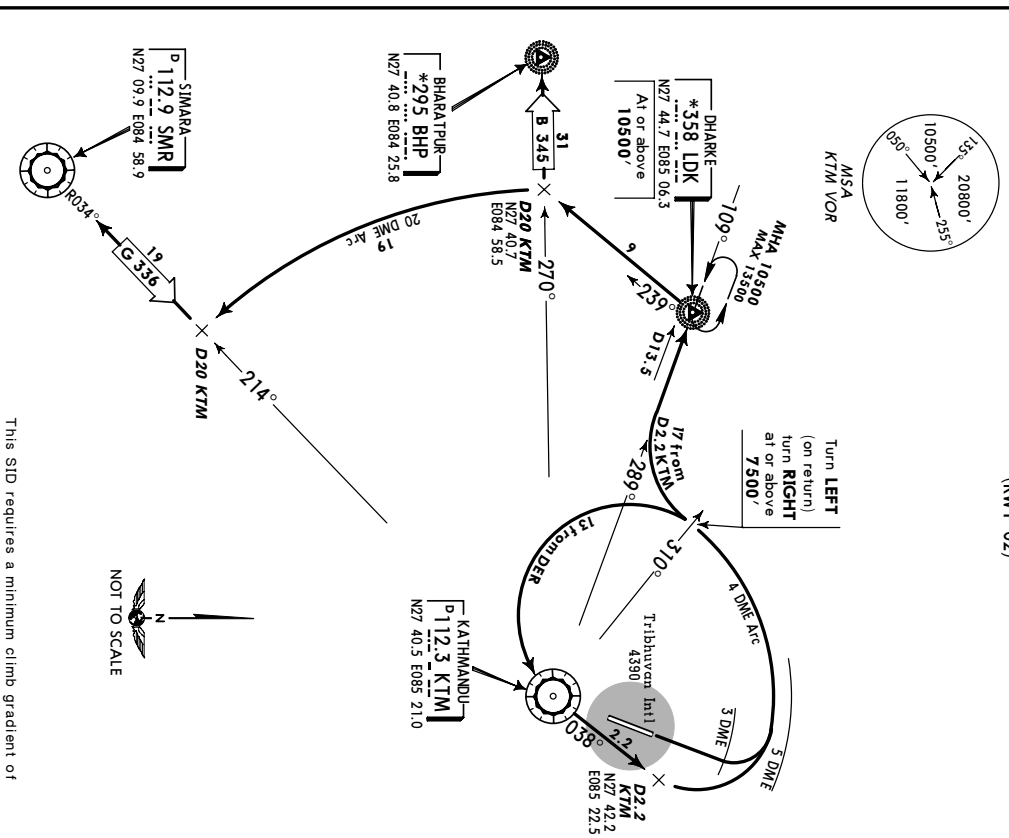


SID	ROUTING	CLIMB INSTRUCTION/ ALTITUDE
DHARKE 1C	Straight ahead to KTM 2.5 DME, turn RIGHT (remaining within 5 DME) to KTM VORDME, intercept KTM R-289 to LDK Lctr. Then via B 345 to BHP NDB or via G 336 to SMR VORDME.	Climb to MEA . Cross KTM VORDME at or above 7500' , LDK Lctr at or above 10500' .
DHARKE 1D	Straight ahead to KTM 3 DME, turn LEFT (remaining within 5 DME), proceed along 4 DME arc, when crossing KTM R-310 turn RIGHT, intercept KTM R-289 to LDK Lctr. Then via B 345 to BHP NDB or via G 336 VORDME.	Climb to MEA . Cross KTM R-310 at or above 7500' , LDK Lctr at or above 10500' .

CHANGES: Note withdrawn. © JEPPESEN SANDERSON, INC., 1991, 2001. ALL RIGHTS RESERVED.

SID
KATHMANDU, NEPAL
 TRIBHUVAN INTL

DHARKE 1E
 DEPARTURE
 (RWY 02)



ROUTING	CLIMB INSTRUCTION/ ALTITUDE
Departure turns are limited to MAX IAS 180 KT.	
Straight ahead to KTM 3 DME, turn LEFT, proceed along 4 DME arc, when crossing KTM R-310 turn LEFT to KTM VORDME, intercept KTM R-038 to D2.2 KTM, turn LEFT, proceed along 4 DME arc, at KTM R-310 turn RIGHT, intercept KTM R-289 to LDK Lctr. Then via B 345 to BHP NDB or via G 336 to SMR VORDME.	Climb to MEA . Cross KTM R-310 on return at or above 7500' , LDK Lctr at or above 10500' .

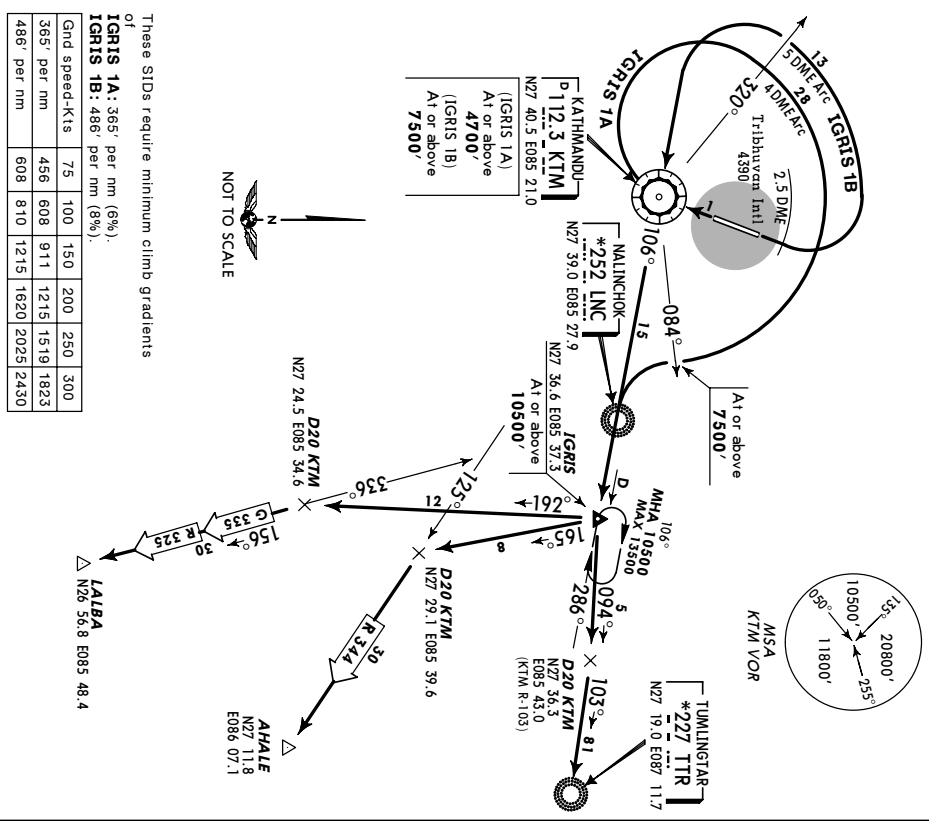
CHANGES: Note withdrawn. © JEPPESEN SANDERSON, INC., 1991, 2001. ALL RIGHTS RESERVED.

JEPPesen 7 DEC 01 **(10-3C)**

SID
KATHMANDU, NEPAL
TRIBHUVAN INTL

TRANS LEVEL: FL150
TRANS ALTI: 13500'

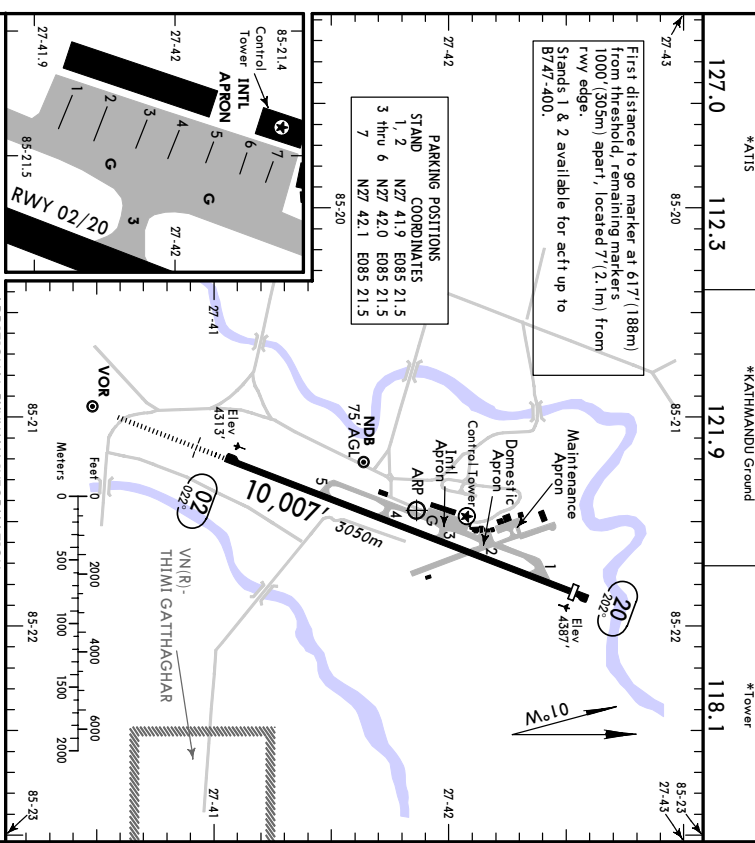
IGRIS 1A, IGRIS 1B
DEPARTURES
(RWYS 20, 02)



SID	RWY	ROUTING	CLIMB INSTRUCTION/ CLIMB ALTITUDE
IGRIS 1A	20	Straight ahead to KTM VORDME, turn RIGHT, proceed along (remaining within) 4 DME arc, when crossing KTM R-084 turn LEFT, intercept KTM R-106 to Igris Int. Then via R 344 to Ahale Int or via R 325 and G 335 to Lalba Int or via KTM R-103 to TTR NDB.	Climb to MEA . Cross KTM VORDME at or above 4700' , KTM R-084 at or above 7500' , Igris Int at or above 10500' .
IGRIS 1B	02	Straight ahead to KTM 2.5 DME, turn LEFT, proceed along (remaining within) 5 DME arc, when crossing KTM R-320 turn LEFT to KTM VORDME, intercept KTM R-106 to Igris Int. Then via R 344 to Ahale Int or via R 325 and G 335 to Lalba Int or via KTM R-103 to TTR NDB.	Climb to MEA . Cross KTM VORDME at or above 7500' , Igris Int at or above 10500' .

CHANGES: Note withdrawn; Lalba Int coordinates. © JEPPesen SANDERSON, INC., 1998, 2001. ALL RIGHTS RESERVED.

VNKT
4390'
Apr Elev 019.87/1.4 from KTM 112.3
JEPPesen 5 APR 02 **(10-9)**
KATHMANDU, NEPAL
TRIBHUVAN INTL
N27 41.8 E085 21.5

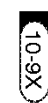


RWY	HIRL HIALS PAPT (angle 3.0°)	HIRL PAPI-L (angle 3.0°)	USABLE LENGTHS		TAKE-OFF WIDTH
			Threshold	Glide Slope	
02			9613'	2930m	150'
					46m

TAKE-OFF		All Rwy's	
2	Eng	1 & 2	TURBOROP
3 & 4	Eng	3 & 4	800m

CHANGES: ATIS frequency added. Notes. © JEPPesen SANDERSON, INC., 2001, 2002. ALL RIGHTS RESERVED.

5 SEP 03 **JEPPESSEN** **JAA MINIMUMS**



KATHMANDU, NEPAL
TRIBHUVAN INTL

STRAIGHT-IN RWY	A	B	C	D
VOR DME	5120' (807')	5120' (807')	5120' (807')	5120' (807')
DAY	ceiling 800' - 1500m	ceiling 800' - 1500m	ceiling 800' - 1500m	ceiling 800' - 1800m
ALS out	ceiling 800' - 1500m	ceiling 800' - 1500m	ceiling 800' - 2000m	ceiling 800' - 2000m
NIGHT	ceiling 800' - 3000m	ceiling 800' - 3000m	ceiling 800' - 3000m	ceiling 800' - 3000m

CIRCLE-TO-LAND	A	B	C	D
DAY	5120' (730')	5120' (730')	5120' (730')	5120' (730')
NIGHT	ceiling 800' - V2500m	ceiling 800' - V2500m	ceiling 800' - V2500m	ceiling 800' - V3600m
	5600' (1210') ^②	5600' (1210') ^②	NOT AUTHORIZED	NOT AUTHORIZED

- ① After Circling VOR DME to rwy 02. Remain within D2.5 in quadrant of R-106 and R-202 and within D3.0 for rest sector. Descend from 5600' after reaching D2.0 on final approach track (R-202) if there is no traffic from NOPEN.
- ② After VOR DME Rwy 02: NOT AUTHORIZED.

Take-off Rwy 02, 20

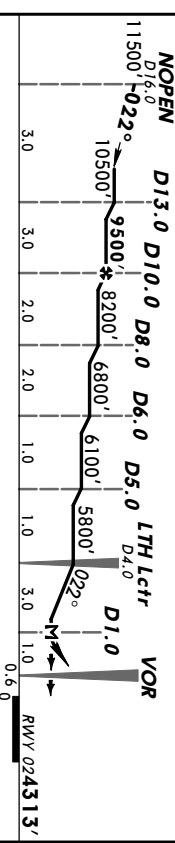
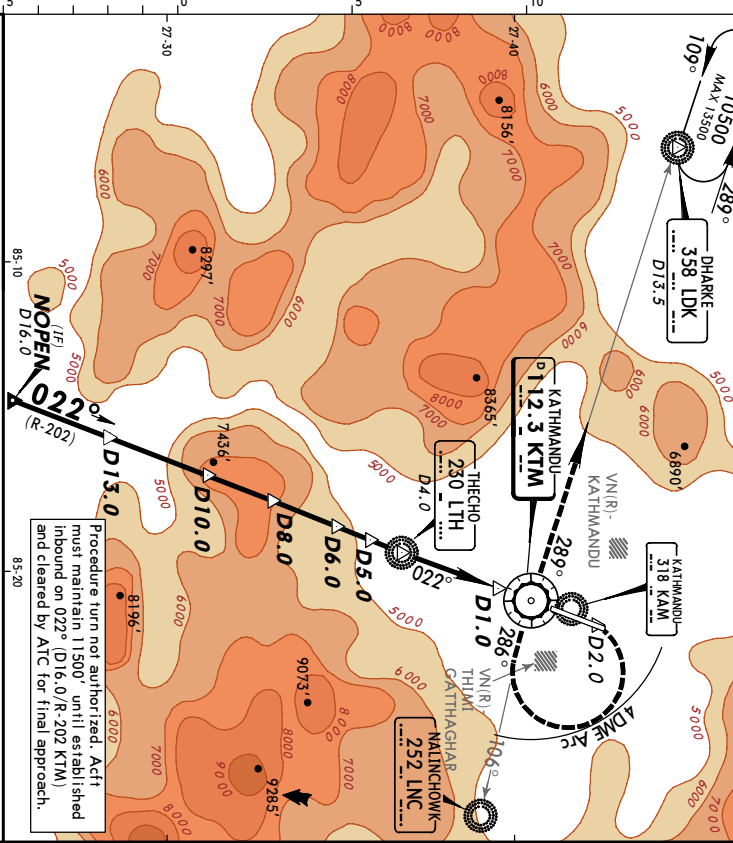
JET	TURBO PROP
800m	1600m
9 & 4 Eng	9 & 4 Eng

5 APR 02 **JEPPESSEN** **KATHMANDU, NEPAL**
VOR DME Rwy 02

ATIS	*KATHMANDU Approach	*KATHMANDU Tower	%Ground
127.0	120.6	118.1	121.9
VOR	Final	MDA(H)	Apt Elev
KTM	Apch Crs	D16.0	4390'
112.3	022°	9500' (5187')	RWY 4313'

MISSED APCH: Climb STRAIGHT AHEAD to VOR, continue climb outbound on R-022 to D2.0, then climbing RIGHT turn onto 4 DME Arc to intercept and follow R-106 inbound to VOR. Then proceed via outbound R-289 to cross LDK Lctr/D13.5 at or above 10500' and join holding pattern.

All Set: Rpa Rwy Elev: 148 Rpa Trans level: Fl 150 Trans alt: 13500'



MAP at D1.0	STRAIGHT-IN LANDING RWY 02	CEILING REQUIRED	DAY	CIRCLE-TO-LAND	NIGHT
MDA(H) 5120' (807')	MDA(H) 5120' (807')	MDA(H) 5120' (807')	MDA(H) 5120' (807')	MDA(H) 5120' (730')	MDA(H) 5120' (800')
ALS out	ALS out	ALS out	ALS out	ALS out	ALS out
800' - 1500m	800' - 1500m	800' - 1500m	800' - 1500m	800' - 1500m	800' - 1500m
800' - 1600m	800' - 1600m	800' - 1600m	800' - 1600m	800' - 1600m	800' - 1600m
800' - 3000m	800' - 3000m	800' - 3000m	800' - 3000m	800' - 3000m	800' - 3000m
800' - 1600m	800' - 1600m	800' - 1600m	800' - 1600m	800' - 1600m	800' - 1600m
5120' (730')	5120' (730')	5120' (730')	5120' (730')	5120' (730')	5120' (730')
800' - 3600m	800' - 3600m	800' - 3600m	800' - 3600m	800' - 3600m	800' - 3600m

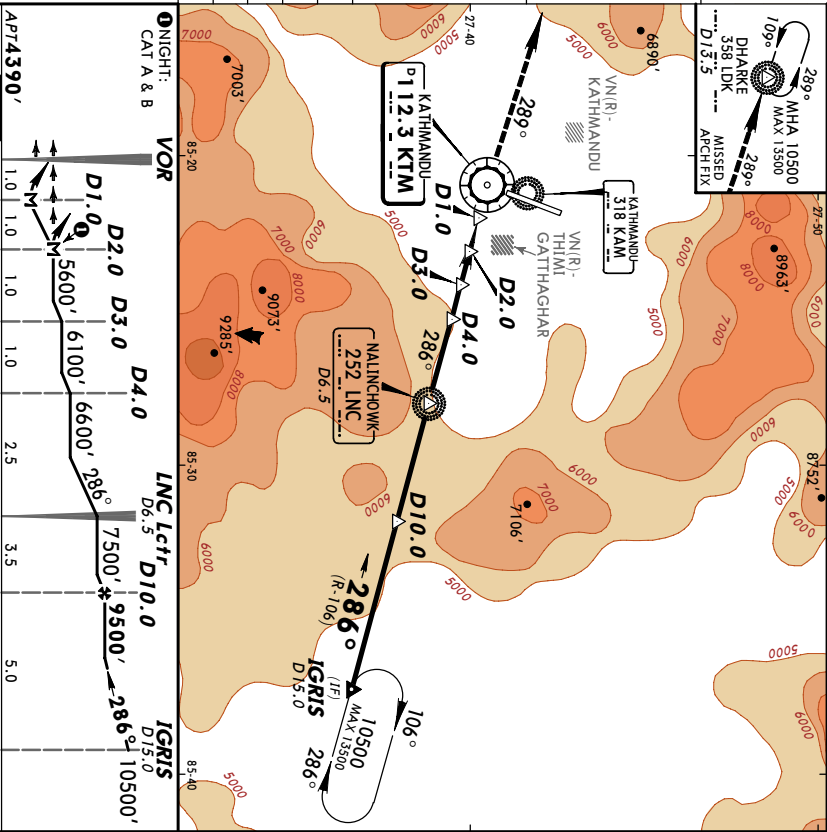
VNKT/KTM **JEPPESEN** **KATHMANDU, NEPAL**
TRIBHUVAN INTL **5 APR 02 (3-2)** **CIRCLING VOR DME**

*ATIS	*KATHMANDU Approach	*KATHMANDU Tower	*Ground
127.0	120.6	118.1	121.9
VOR	Final	Minimum Alt	MDA(H)
KTM	Apch Crs	D10.0	Refer to Minimums
112.3	286°	9500' (5110')	Appt Elev 4390'

MISSED APCH: Climb STRAIGHT AHEAD to VOR, then proceed outbound on R-289 to cross LDK Lctr/D13.5 at or above 10500' and join holding pattern.

Alt Set: hpa
 Procedure turn not authorized. Act must maintain 10500' (6110') until established inbound on 286° (D15.0/R-106 KTM) and cleared by ATC for final approach.

Apr Elev: 151 hpa
 Trans level: FL 150
 Trans alt: 13500' (9110')



ONIGHT:			
CAT A & B			
VOR			
D1.0	D2.0	D3.0	D4.0
5600'	6100'	6600'	7500'
INCL Lctr D10.0			
D6.5			
9500'			
D15.0			
IGRIS			
D15.0			
286°			
10500'			
MAX 13500'			
IGRIS 286°			
D15.0			
APR 4390'			
1.0			
1.0			
1.0			
1.0			
2.5			
3.5			
5.0			

CEILING REQUIRED			
DAY		NIGHT	
A	MDA(H)	CEIL. VIS	MDA(H)
B	5120' (730')	800' - 2500m	5600' (1210') 1500' - 5000m
C			
D	5120' (730')	800' - 3600m	
NOT AUTHORIZED			

CHANGES: ATIS frequency added. Notes. © JEPPESEN SANDERSON, INC., 2001, 2002. ALL RIGHTS RESERVED.