

HOCHIMINH, VIETNAM

ILS/DME RWY 25R

LOC/DME I-HCM 110.5 Chan 42	APCH CRS 249°	Rwy ldg 10,000 THRE 33 Arprt Elev 33
--	-------------------------	---

[USAF] AL-1927 (CAAV)

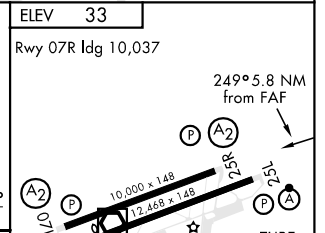
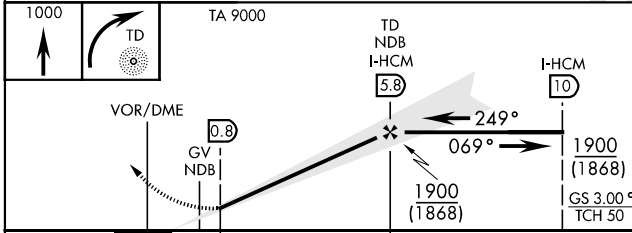
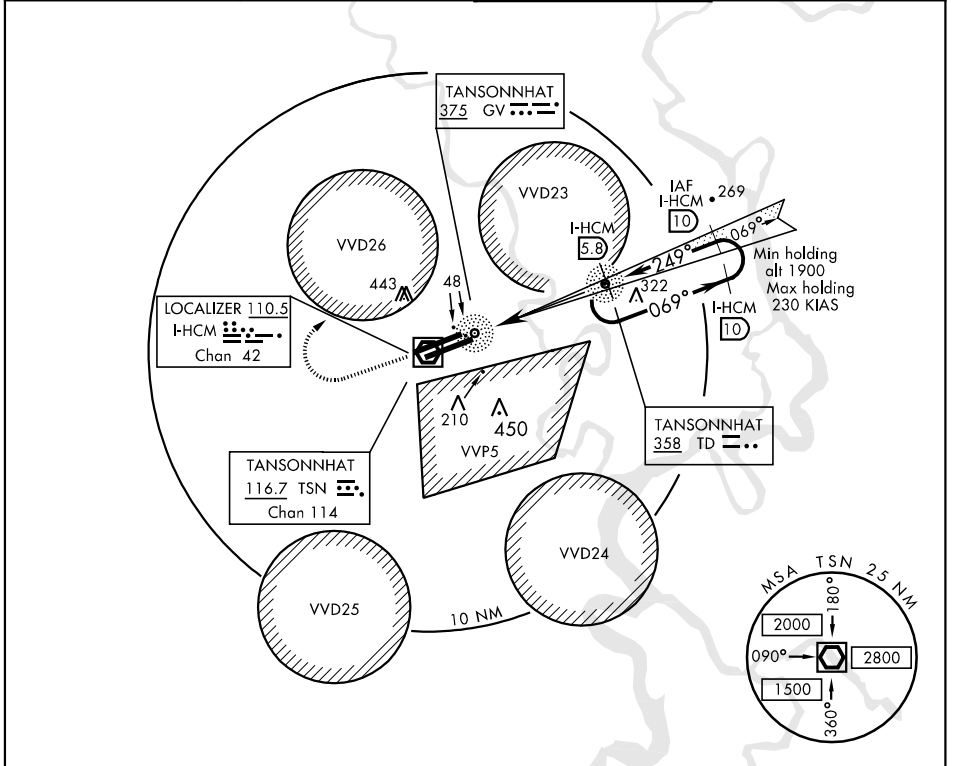
TANSONNHAT INTL (VVTS)

* When ALS inop, increase vis to 1600m.
 ** When ALS inop, increase CAT A, B, C vis to 1600m and CAT D to 2000m.
 *** Circling is not authorized S of the rwy.



MISSED APPROACH: Maintain Rwy hdg until reaching 1000, turn right to TD NDB to join holding pattern or follow ATC instructions.

ATIS 128.0	TANSONNHAT APP CON 125.5	TANSONNHAT TOWER 118.7	GND CON 121.9
----------------------	------------------------------------	----------------------------------	-------------------------



CATEGORY	A	B	C	D
S-ILS 25R *	279-1200m		246 (300-1200m)	
S-LOC 25R **	400-1200m		367 (400-1200m)	400-1600m 367 (400-1600m)
CIRCLING ***	660-1600m 627 (700-1600m)		1000-4800m 967 (1000-4800m)	

TDZL/CL Rwy 25L
 HIRL Rwy 07R-25L, 07L-25R

HOCHIMINH, VIETNAM

10°49'N-106°40'E

TANSONNHAT INTL (VVTS)

Amdt 2 05020

ILS/DME RWY 25R

Effective 29 SEP 2005 - 27 OCT 2005