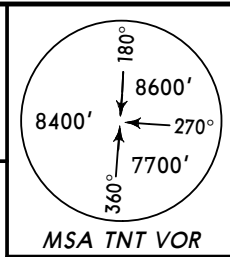


**MHTG/TGU**  
**TONCONTIN INTL**

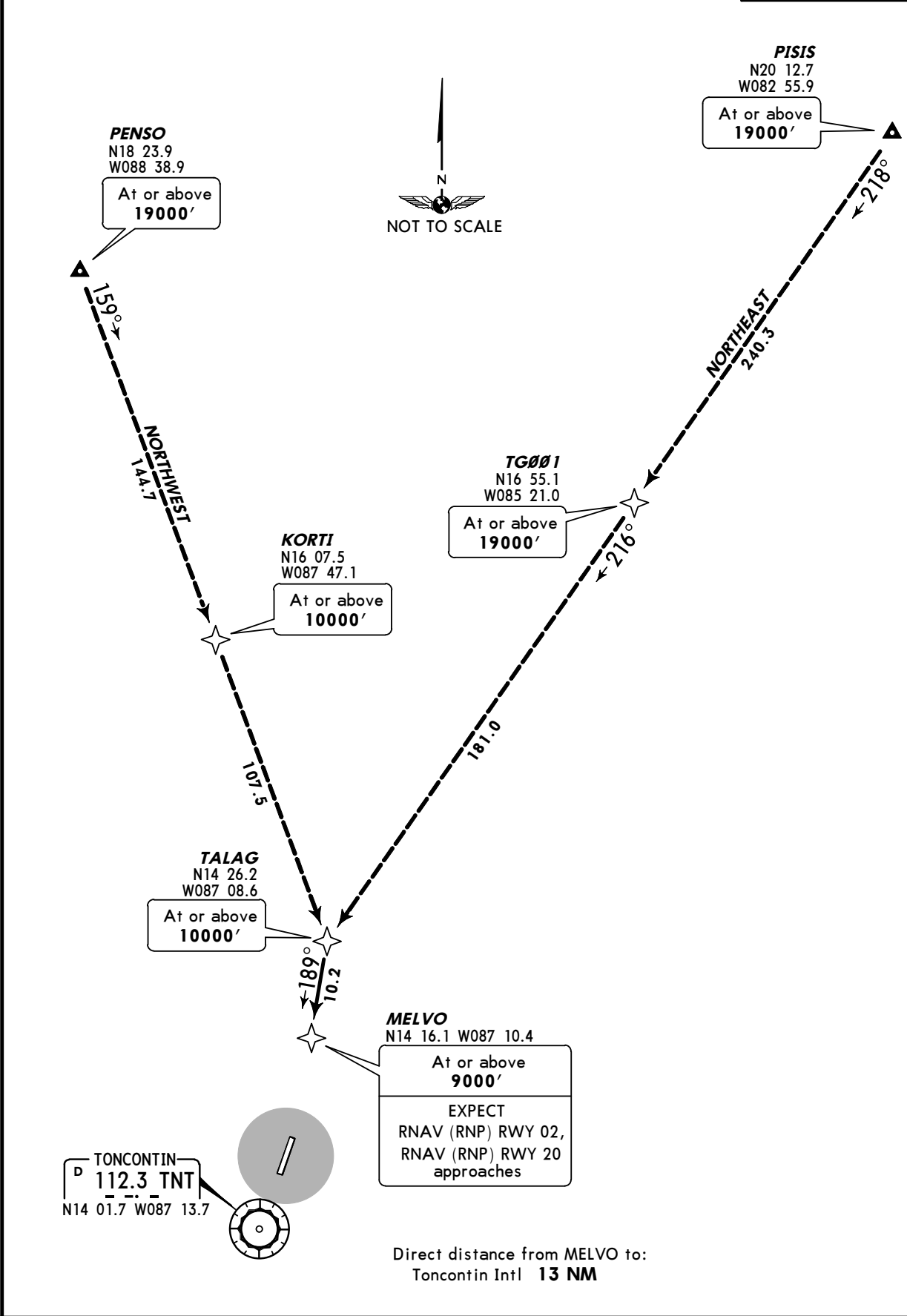
**JEPPESEN**  
3 OCT 08 **10-2**

**TEGUCIGALPA, HONDURAS**  
**RNAV STAR**

<p>*ATIS <b>112.3</b></p>	<p>Apt Elev <b>3297'</b></p>	<p>Alt Set: hPa Trans level: FL200 Trans alt: 19500'</p> <ol style="list-style-type: none"> <li>1. GPS required.</li> <li>2. DME/DME not required.</li> <li>3. RNP 2.0.</li> <li>4. RADAR required.</li> </ol>
-------------------------------	----------------------------------	--



**NORTH RNAV ARRIVAL**  
(RWYS 02/20)



TONCONTIN  
**112.3 TNT**  
N14 01.7 W087 13.7

**MHTG/TGU**  
**TONCONTIN INTL**

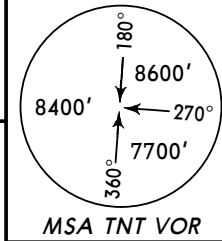
**JEPPESEN**  
3 OCT 08 **(10-2A)**

**TEGUCIGALPA, HONDURAS**  
**RNAV STAR**

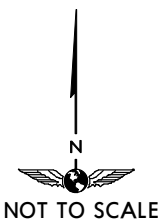
\*ATIS  
**112.3**

Apt Elev  
**3297'**

Alt Set: hPa Trans level: FL200 Trans alt: 19500'  
1. GPS required.  
2. DME/DME not required.  
3. RNP 2.0.

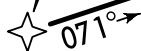


**WEST RNAV ARRIVAL**



**VITAN**  
N13 51.7  
W087 45.0

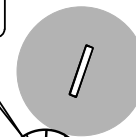
At or above  
**10000'**



**32.0**

TONCONTIN  
**D 112.3 TNT**  
N14 01.7 W087 13.7  
(FLY OVER)

At or above  
**8000'**



Direct distance from TNT to:  
Toncontin Intl **2 NM**

# MHTG/TGU TONCONTIN INTL

## JEPPESEN TEGUCIGALPA, HONDURAS

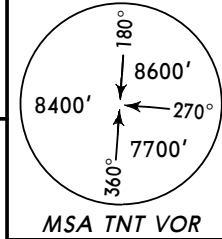
22 AUG 08 **10-3** Eff 28 Aug

**RNAV SID**

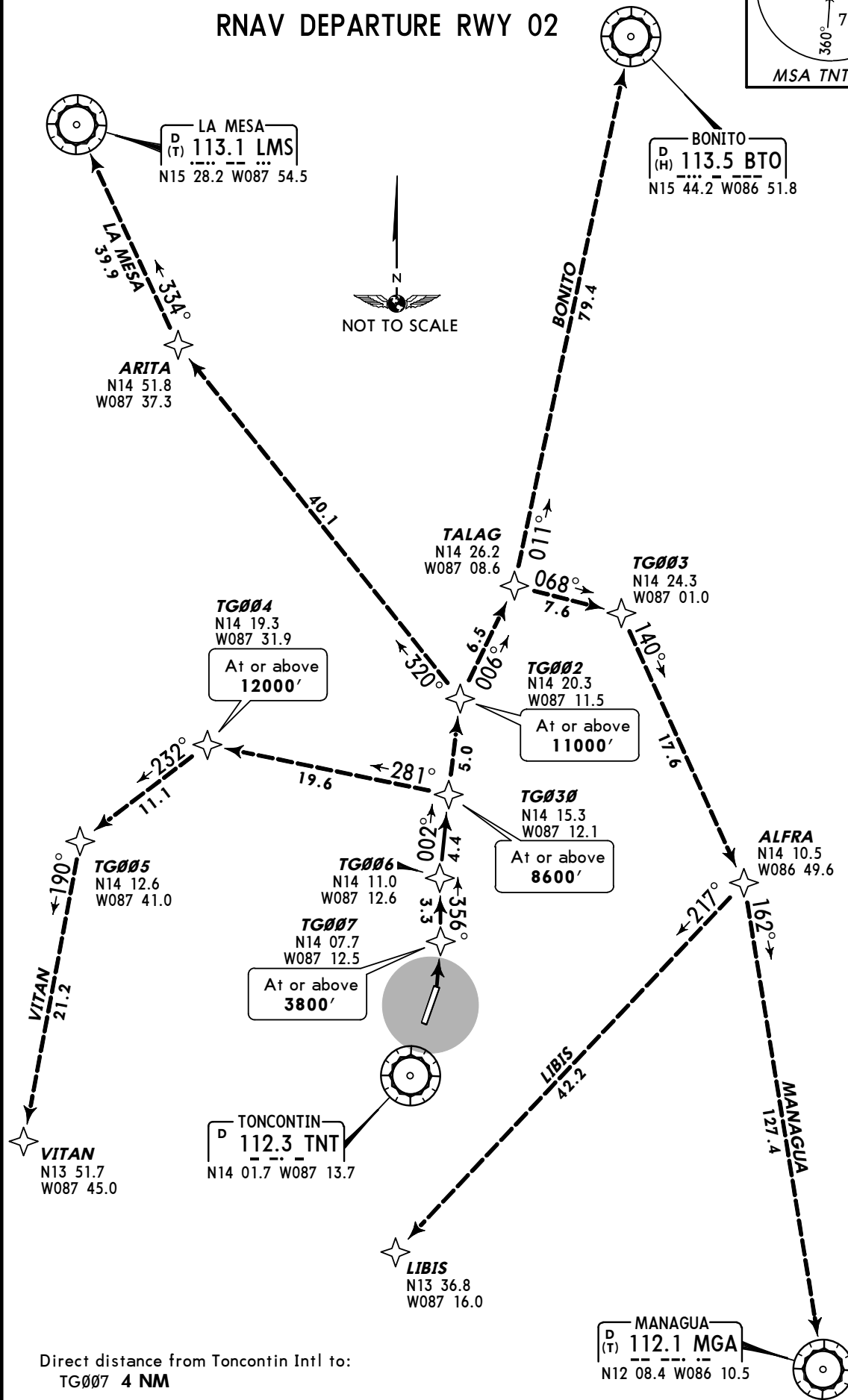
Apt Elev  
**3297'**

Trans level: FL200 Trans alt: 19500'

1. GPS required.
2. DME/DME not required.
3. RNP 2.0.

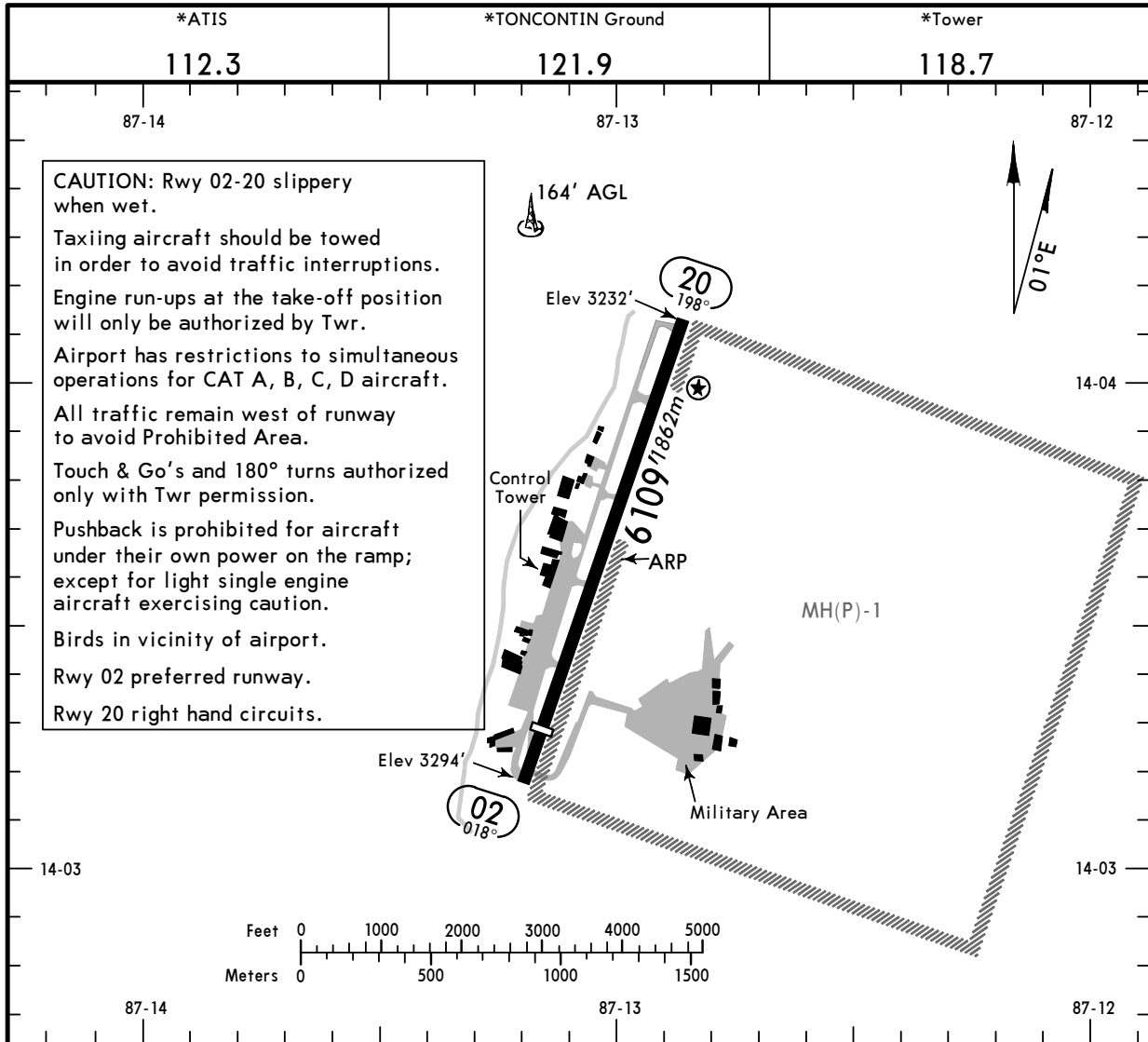


### RNAV DEPARTURE RWY 02



**MHTG/TGU**  
Apt Elev **3297'**  
N14 03.6 W087 13.0

**JEPPESEN TEGUCIGALPA, HONDURAS**  
22 AUG 08 **(10-9)** **Eff 28 Aug** **TONCONTIN INTL**



RWY		USABLE LENGTHS		TAKE-OFF	WIDTH
		Threshold	Glide Slope		
02	RL ① REIL ② PAPI-R (angle 5.3°)	5410'	1649m		148'
	RL ① REIL PAPI-R (angle 5.0°)				45m
20					

- ① Activate on 118.7
- ② Cat A, B only.

TAKE-OFF	
	<b>All Rwys</b>
1 & 2 Eng	<b>1200' - 2800m</b>
3 & 4 Eng	

**MHTG/TGU**



**TEGUCIGALPA, HONDURAS**

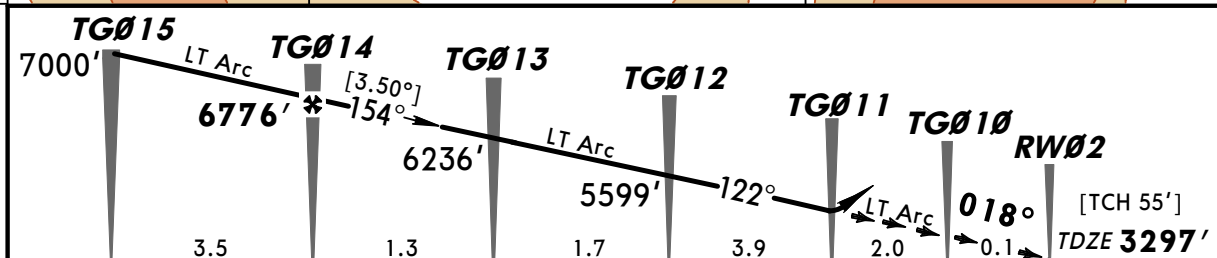
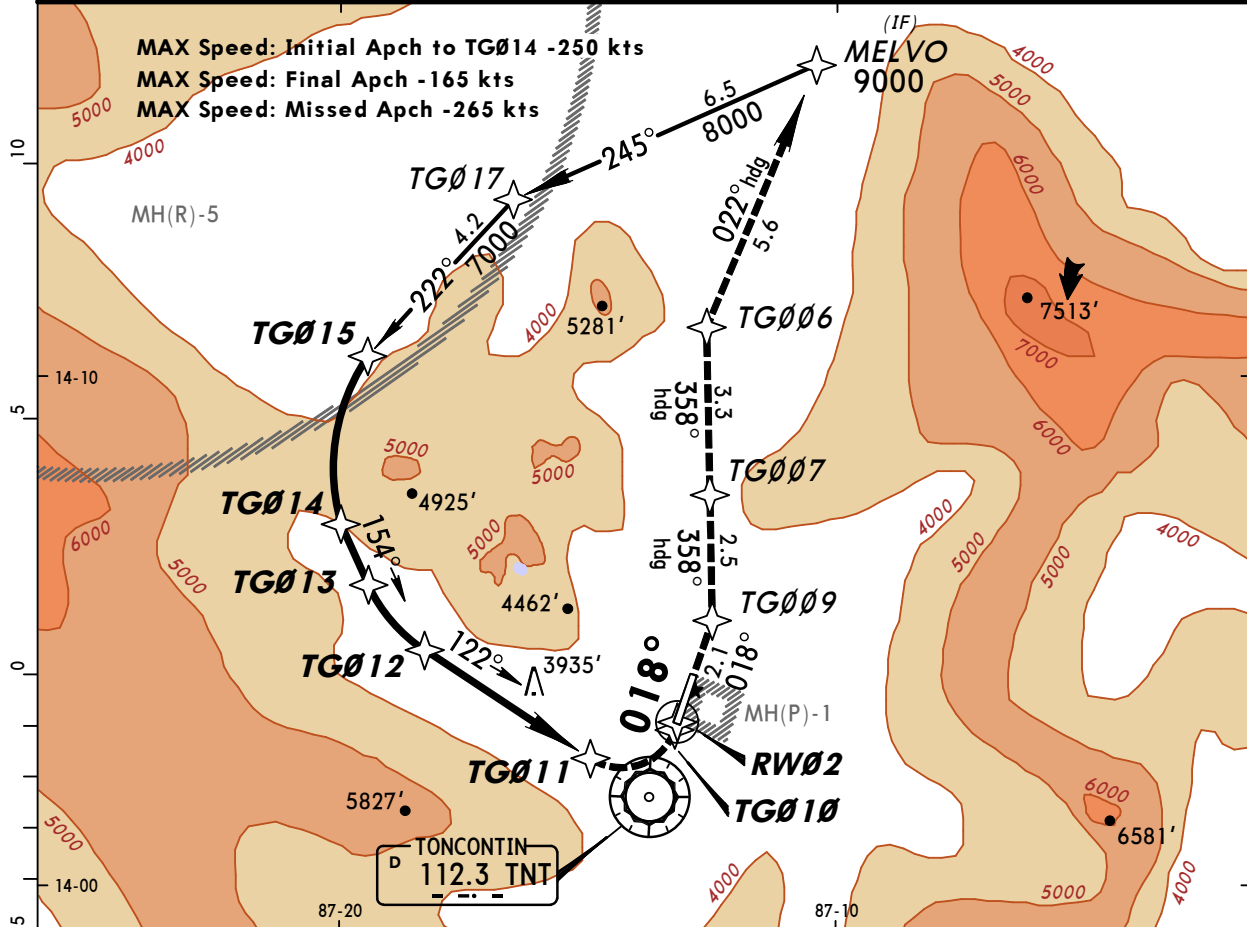
TONCONTIN INTL

3 OCT 08

(12-1) CAT C & D

**NORTH RNAV (RNP) Rwy 02**

*ATIS <b>112.3</b>		*TONCONTIN Approach <b>119.1</b>		*TONCONTIN Tower <b>118.7</b>		*Ground <b>121.9</b>																									
RNAV	Final Apch Crs <b>018°</b>	Minimum Alt <b>TG014</b> <b>6776' (3479')</b>	RNP 0.3 DA(H) <b>4144' (847')</b>	Apt Elev <b>3297'</b> TDZE <b>3297'</b>		<p>MSA TNT VOR</p>																									
<p><b>MISSED APCH:</b> Climb and continue on radius leg to TG010 then Rwy heading to TNT VOR R-018 to TG009 then proceed on heading 358° climbing to TG006 then heading 022° climbing to 9000' to MELVO and request ATC instructions.</p> <p>Missed approach requires RNP less than 1.0.</p> <table border="1"> <tr> <th colspan="8">Missed Approach Climb Gradient</th> </tr> <tr> <th>Gnd speed-Kts</th> <td>75</td> <td>100</td> <td>150</td> <td>200</td> <td>250</td> <td>300</td> <td></td> </tr> <tr> <th>260'/NM</th> <td>325</td> <td>433</td> <td>650</td> <td>867</td> <td>1083</td> <td>1300</td> <td></td> </tr> </table> <p>Alt Set: hPa    TDZ Elev: 115 hPa    Trans level: FL 200    Trans alt: 19500'</p> <p><b>1. SPECIAL AIRCRAFT &amp; AIRCREW AUTHORIZATION REQUIRED.</b>    <b>2. RF and GPS capability required.</b>    <b>3. CAUTION:</b> High terrain all quadrants. Do not exceed distance limits in the holding patterns and procedure turns.    <b>4. DME/DME not authorized.</b>    <b>5. VGS I and descent angle not coincident.</b></p>								Missed Approach Climb Gradient								Gnd speed-Kts	75	100	150	200	250	300		260'/NM	325	433	650	867	1083	1300	
Missed Approach Climb Gradient																															
Gnd speed-Kts	75	100	150	200	250	300																									
260'/NM	325	433	650	867	1083	1300																									



Gnd speed-Kts	70	90	100	120	140	160	REIL PAPI-R	↑ and continue on Radius leg TG010
Descent angle [3.50°]	434	557	619	743	867	991		
MAP at DA								

STRAIGHT-IN LANDING RWY 02  
RNP 0.3  
DA(H) **4144' (847')**

A	NA
B	
C	
D	2.6 km

**MHTG/TGU**

TONCONTIN INTL



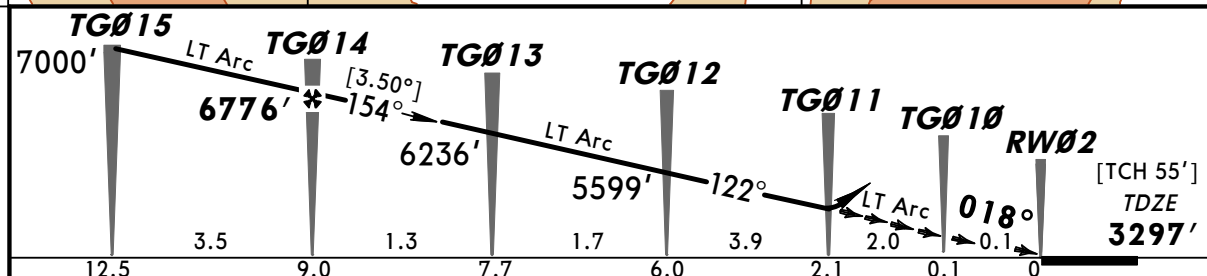
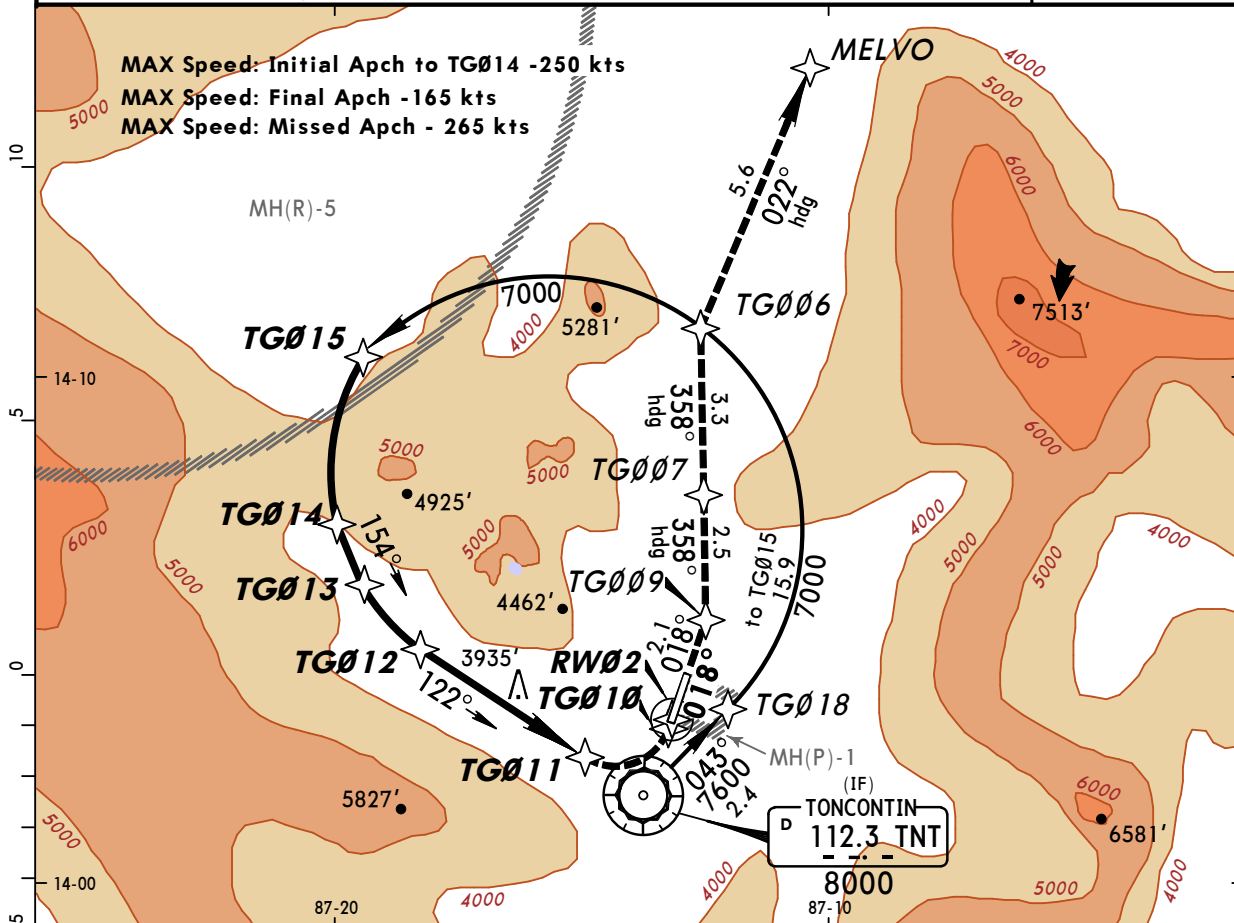
3 OCT 08 (12-2)

CAT C & D

**TEGUCIGALPA, HONDURAS**

**SOUTH RNAV (RNP) Rwy 02**

*ATIS <b>112.3</b>		*TONCONTIN Approach <b>119.1</b>		*TONCONTIN Tower <b>118.7</b>		*Ground <b>121.9</b>																									
RNAV	Final Apch Crs <b>018°</b>	Minimum Alt <b>TG014</b> <b>6776' (3479')</b>	RNP 0.3 DA(H) <b>4144' (847')</b>	Apt Elev <b>3297'</b> TDZE <b>3297'</b>																											
<p><b>MISSED APCH:</b> Climb and continue on radius leg to TG010 then Rwy heading to TNT VOR R-018 to TG009 then proceed on heading 358° climbing to TG006 then heading 022° climbing to 9000' to MELVO and request ATC instructions.</p> <p>Missed approach requires RNP less than 1.0.</p> <table border="1"> <thead> <tr> <th colspan="8">Missed Approach Climb Gradient</th> </tr> <tr> <th>Gnd speed-Kts</th> <th>75</th> <th>100</th> <th>150</th> <th>200</th> <th>250</th> <th>300</th> <th></th> </tr> </thead> <tbody> <tr> <td>260'/NM</td> <td>325</td> <td>433</td> <td>650</td> <td>867</td> <td>1083</td> <td>1300</td> <td></td> </tr> </tbody> </table> <p>Alt Set: hPa    TDZ Elev: 115 hPa    Trans level: FL 200    Trans alt: 19500'</p> <p><b>1. SPECIAL AIRCRAFT &amp; AIRCREW AUTHORIZATION REQUIRED.</b>    <b>2. RF and GPS capability required.</b>    <b>3. CAUTION:</b> High terrain all quadrants. Do not exceed distance limits in the holding patterns and procedure turns.    <b>4. DME/DME not authorized.</b>    <b>5. VGSI and descent angle not coincident.</b></p>								Missed Approach Climb Gradient								Gnd speed-Kts	75	100	150	200	250	300		260'/NM	325	433	650	867	1083	1300	
Missed Approach Climb Gradient																															
Gnd speed-Kts	75	100	150	200	250	300																									
260'/NM	325	433	650	867	1083	1300																									
							<p>MSA TNT VOR</p>																								



Gnd speed-Kts	70	90	100	120	140	160	REIL PAPI-R	↑ and continue on Radius leg	TG010
Descent angle [3.50°]	434	557	619	743	867	991			
MAP at DA									

**STRAIGHT-IN LANDING RWY02**  
**RNP 0.3**  
**DA(H) 4144' (847')**

A	<b>NA</b>
B	
C	
D	

CHANGES: Note, VOR morse code and ident, missed apch track.

**MHTG/TGU**

**JEPPESEN TEGUCIGALPA, HONDURAS**

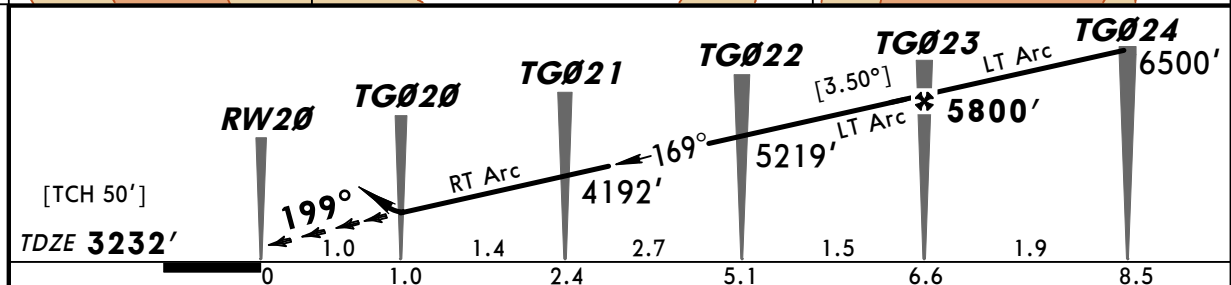
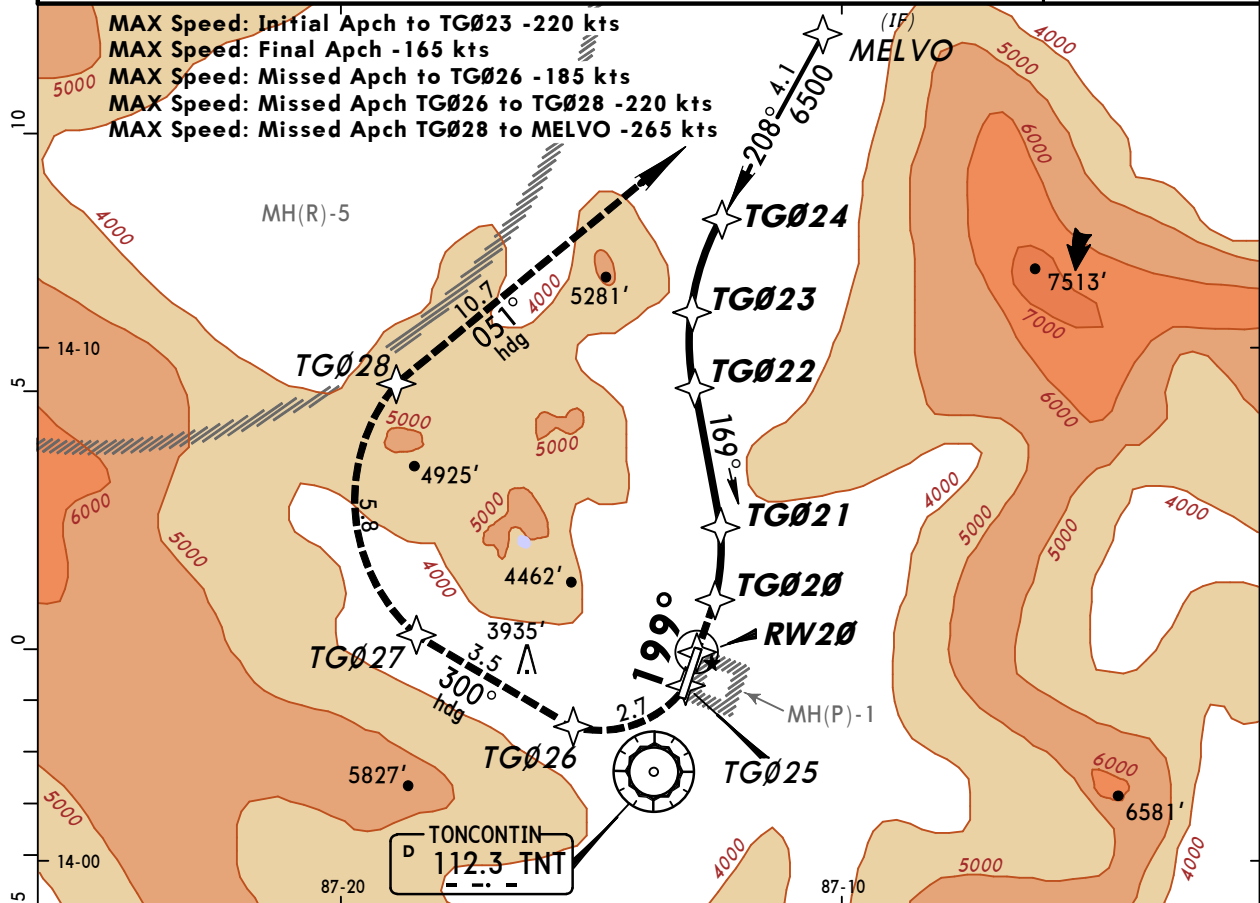
TONCONTIN INTL

3 OCT 08 (12-3)

CAT C & D

RNAV (RNP) Rwy 20

*ATIS 112.3	*TONCONTIN Approach 119.1		*TONCONTIN Tower 118.7		*Ground 121.9																					
RNAV	Final Apch Crs 199°	Minimum Alt TG023 5800' (2568')	RNP 0.3 DA(H) 3655' (423')	Apt Elev 3297' TDZE 3232'																						
<p><b>MISSED APCH:</b> Climb on Rwy heading to TG025 then climbing RIGHT turn on radius leg to TG026 then proceed on heading 300° climbing to TG027, TG028 then heading 051° climbing to 9000' to MELVO and request ATC instructions.</p> <p>Missed approach requires RNP less than 1.0.</p> <table border="1"> <thead> <tr> <th colspan="7">Missed Approach Climb Gradient</th> </tr> <tr> <th>Gnd speed-Kts</th> <td>75</td> <td>100</td> <td>150</td> <td>200</td> <td>250</td> <td>300</td> </tr> <tr> <th>260'/NM</th> <td>325</td> <td>433</td> <td>650</td> <td>867</td> <td>1083</td> <td>1300</td> </tr> </thead> </table>					Missed Approach Climb Gradient							Gnd speed-Kts	75	100	150	200	250	300	260'/NM	325	433	650	867	1083	1300	
Missed Approach Climb Gradient																										
Gnd speed-Kts	75	100	150	200	250	300																				
260'/NM	325	433	650	867	1083	1300																				
<p>Alt Set: hPa TDZ Elev: 113 hPa Trans level: FL 200 Trans alt: 19500'</p> <p>1. <b>SPECIAL AIRCRAFT &amp; AIRCREW AUTHORIZATION REQUIRED.</b> 2. <b>RF and GPS capability required.</b> 3. <b>CAUTION:</b> High terrain all quadrants. Do not exceed distance limits in the holding patterns and procedure turns. 4. DME/DME not authorized. 5. VGSI and descent angle not coincident.</p>																										



Gnd speed-Kts	70	90	100	120	140	160				
Descent angle [3.50°]	434	557	619	743	867	991				
MAP at DA										

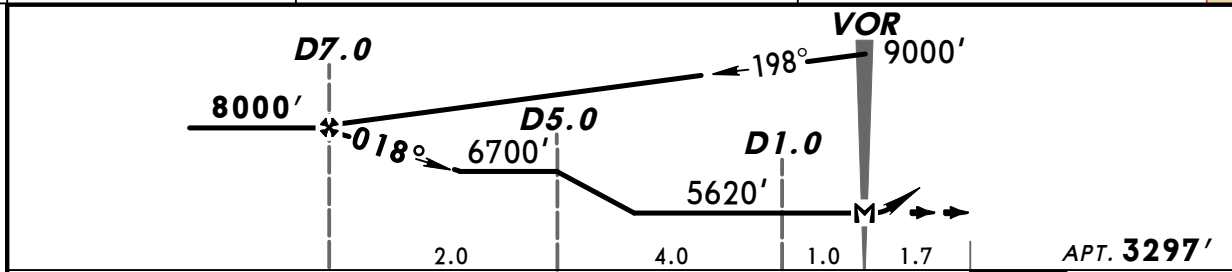
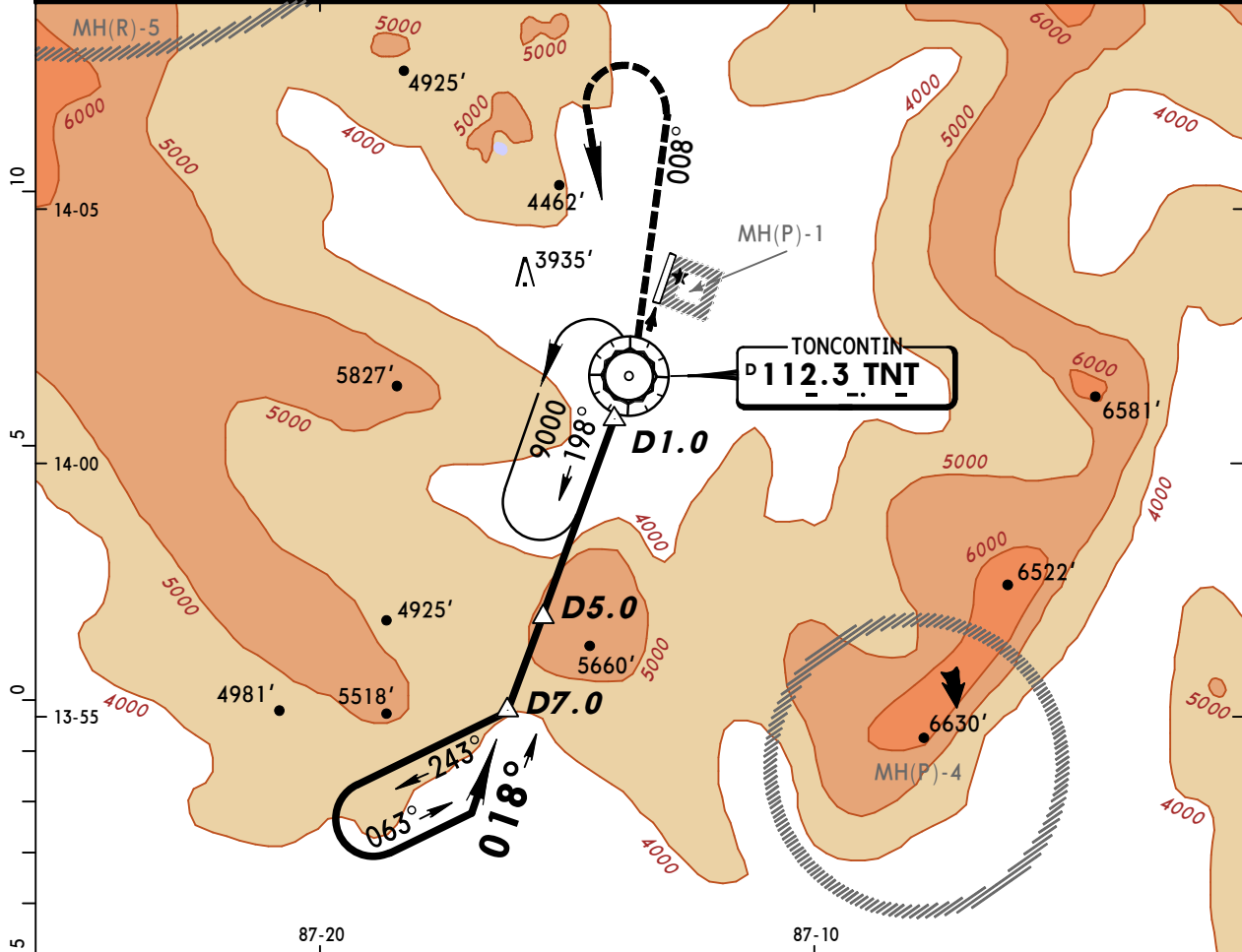
STRAIGHT-IN LANDING RWY 20  
RNP 0.3  
DA(H) 3655' (423')

A	NA
B	
C	
D	2.6 km

**MHTG/TGU**  
**TONCONTIN INTL**

**JEPPESEN TEGUCIGALPA, HONDURAS**  
22 AUG 08 (13-1) Eff 28 Aug **VOR DME Rwy 02**

*ATIS <b>112.3</b>		*TONCONTIN Approach <b>119.1</b>		*TONCONTIN Tower <b>118.7</b>		*Ground <b>121.9</b>		
VOR TNT <b>112.3</b>	Final Apch Crs <b>018°</b>	Minimum Alt <b>D7.0</b> 8000' (4703')	MDA(H) Refer to Minimums	Apt Elev <b>3297'</b>		<p>MSA TNT VOR</p>		
<b>MISSED APCH:</b> Climb outbound on TNT VOR R-008 to 6500' within 6.5 NM, then turn LEFT climbing to a minimum of 9000'. Then return to TNT VOR. Request instructions from ATC.								
Alt Set: hPa    Apt Elev: 115 hPa    Trans level: FL 200    Trans alt: 19500' 1. CAUTION: High terrain all quadrants. Do not exceed distance limits in the holding patterns and procedure turns.								



Gnd speed-Kts	70	90	100	120	140	160	REIL PAPI-R	6500' ↑ on 112.3 TNT R-008 within 6.5 NM
Rate of descent on final (feet/min)	397	510	567	680	793	907		
MAP at VOR								
D7.0 to MAP	7.0	6:00	4:40	4:12	3:30	3:00	2:38	

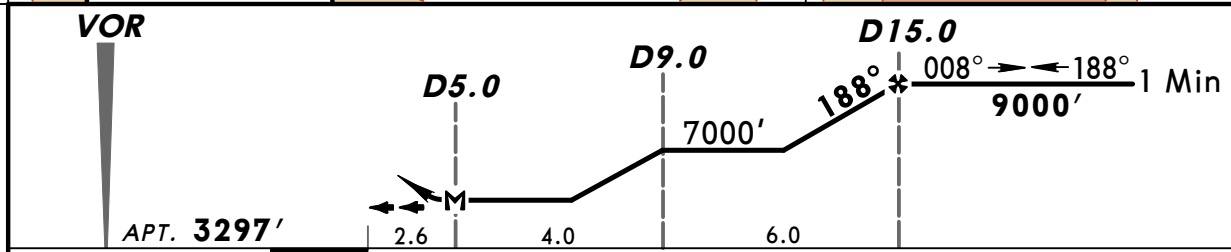
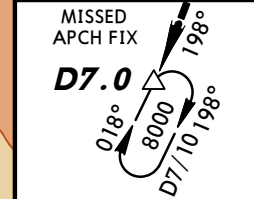
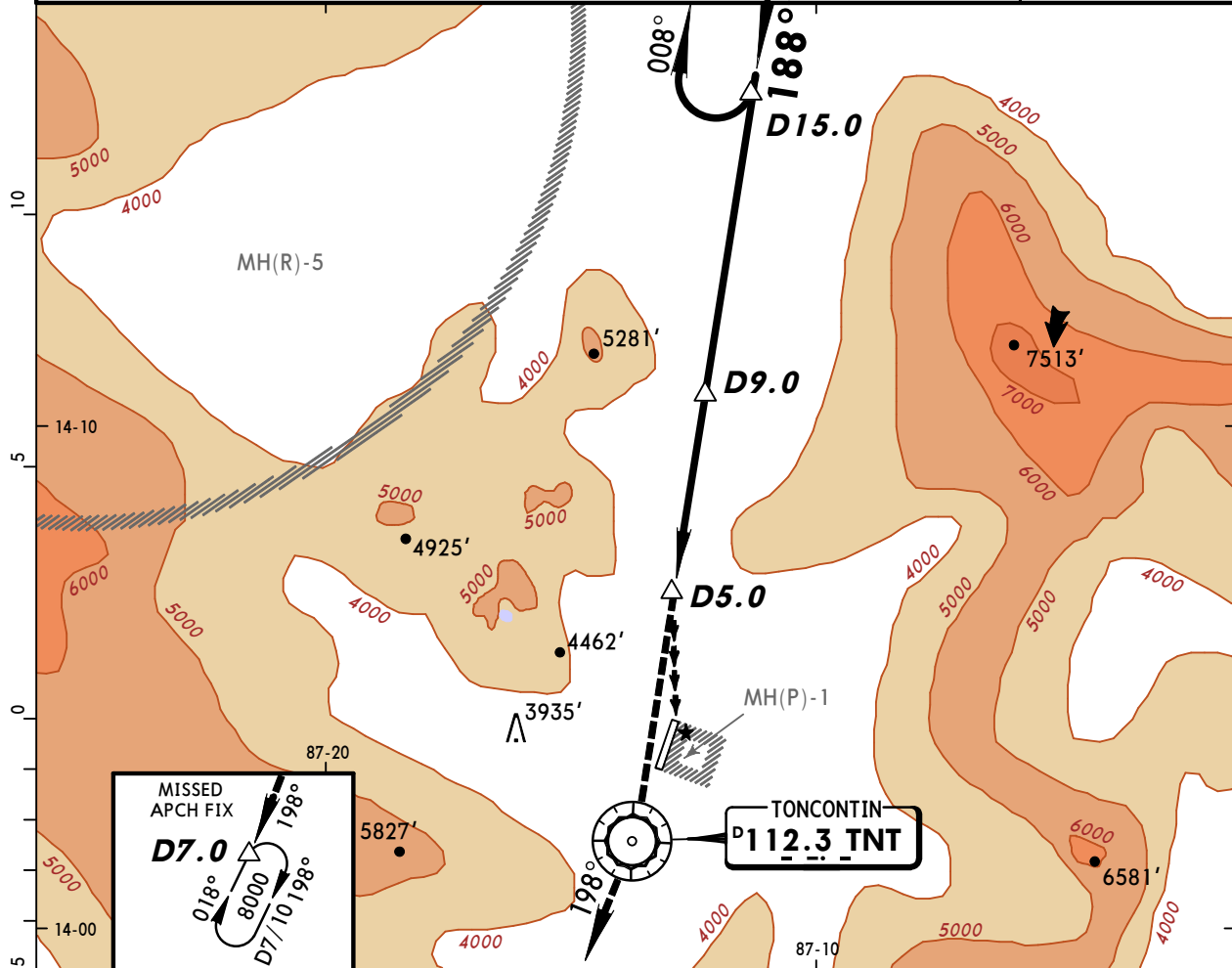
STRAIGHT-IN LANDING		CIRCLE-TO-LAND	
NA		Not Authorized East of Rwy	
PANS OPS	Max Kts	MDA(H)	
	100	5620' (2323') -2	
	135		
	180	5620' (2323') -3	
	205		



**MHTG/TGU**  
**TONCONTIN INTL**

**JEPPESEN TEGUCIGALPA, HONDURAS**  
22 AUG 08 **(13-2)** **Eff 28 Aug** **VOR DME Rwy 20**

*ATIS <b>112.3</b>		*TONCONTIN Approach <b>119.1</b>		*TONCONTIN Tower <b>118.7</b>		*Ground <b>121.9</b>	
VOR TNT <b>112.3</b>	Final Apch Crs <b>188°</b>	Minimum Alt <b>D15.0</b> <b>9000' (5703')</b>	MDA(H) Refer to Minimums	Apt Elev <b>3297'</b>		<p>MSA TNT VOR</p>	
<p><b>MISSED APCH:</b> Climb direct TNT VOR, then continue climb outbound on TNT VOR R-198 to 8000', enter holding pattern. Call APPROACH for instructions.</p> <p>Alt Set: hPa    Apt Elev: 115 hPa    Trans level: FL 200    Trans alt: 19500'</p> <p>1. CAUTION: High terrain all quadrants. Do not exceed distance limits in the holding patterns and procedure turns.</p>							



MAP at D5.0				REIL PAPI-R	↑	→	TNT <b>112.3</b>
-------------	--	--	--	----------------	---	---	---------------------

		CIRCLE-TO-LAND	
		Not Authorized East of Rwy	
PANS OPS	Max Kts	MDA(H)	
	A 100	<b>6000' (2703') -2</b>	
	B 135		
	C 180	<b>6000' (2703') -3</b>	
	D 205		